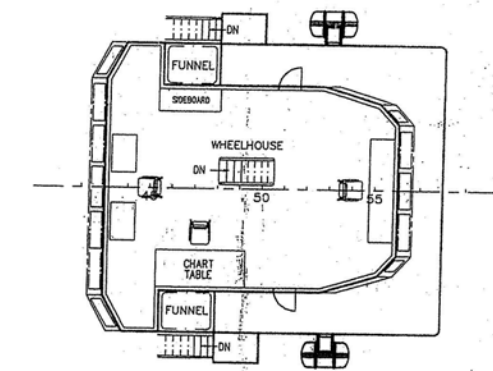
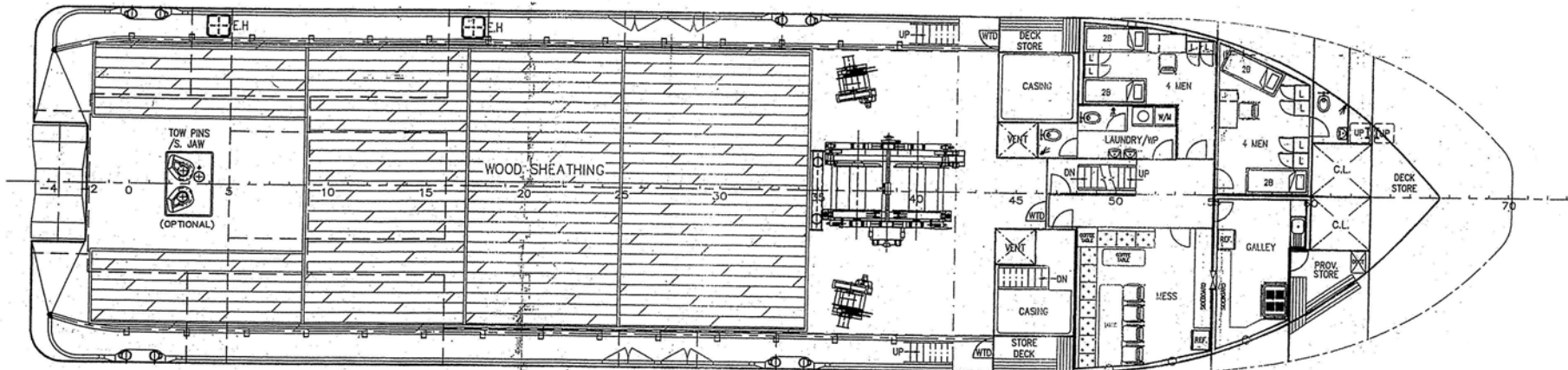


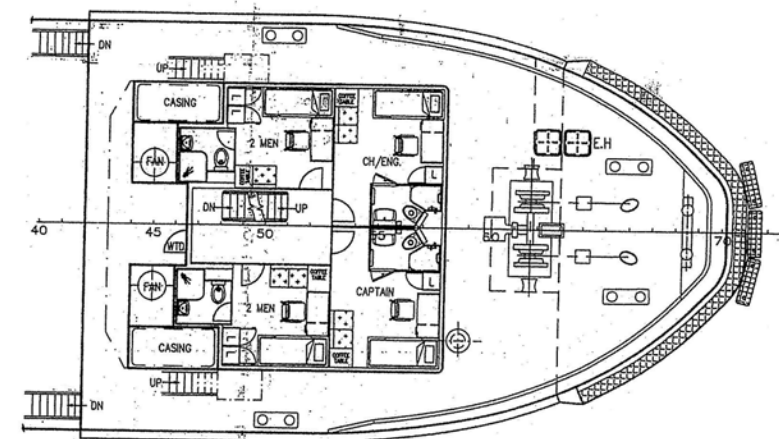
OUTBOARD PROFILE



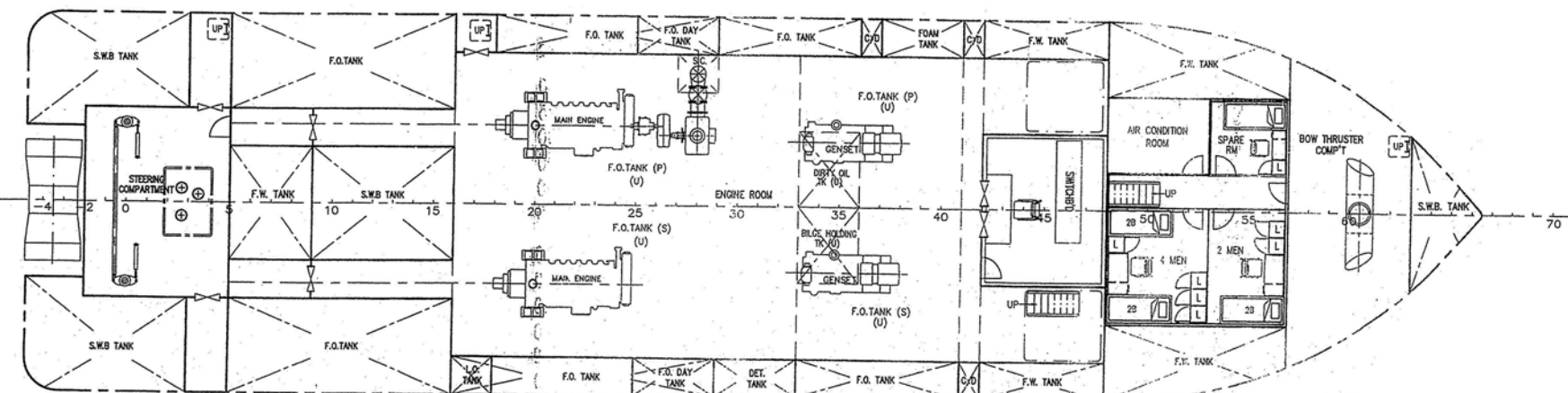
WHEELHOUSE DECK PLAN



MAIN DECK PLAN



FORECASTLE DECK



BELOW MAIN DECK PLAN

PRINCIPAL DIMENSIONS

LENGTH OVERALL	45.00 M
LENGTH WATERLINE	42.75 M
LENGTH B.P.	40.00 M
BREADTH MOULDED	11.00 M
DEPTH MOULDED	4.00 M
DESIGN DRAFT MOULDED	3.20 M

FUEL OIL	250.0 M ³ (app.)
FRESH WATER	175.0 M ³ (app.)
CLEAR DECK AREA	210.0 M ²
MAIN ENGINE	2 x 1750 BHP
SPEED (TRIALS)	12.0 KNOTS
BOLLARD PULL	40 TONS
COMPLEMENT	20 MEN

BUREAU VERITAS Coupe 04809 B
VU
Shanghai, le 02 NOV 2004

J. Zhou
J. ZHOU
SENIOR ENGINEER
CHINA PALM APPROVAL OFFICE

FOR APPROVAL
2004# 10# 2 8#

3.	AMENDED AS PER YARD'S COMMENTS	JOYCE	28-10-04
2.	AMENDED AS PER OWNER'S COMMENTS	IMLAI	1-07-04
1.	AMENDED AS PER YARD'S COMMENTS	XUFF	16-03-04

CONSULTANT **KC KHIAM CHUAN**
MARINE PTE LTD
15, HILLVIEW TERRACE, SINGAPORE 669226
TEL: 67753383 (6 LINES) FAX: 67753788
EMAIL: kcmdesign@pacific.net.sg

PROJECT
45m UTILITY/SUPPORT VESSEL

TITLE
GENERAL ARRANGEMENT

CLASSIFICATION	HELL NO.	LS115		
DRAWN	CHECKED	SCALE	DRAWING NUMBER	REV.
hckOH		1:100	KCM/Q315(A)-G1	3
23-9-03				

THIS DOCUMENT AND THE INFORMATION IT CONTAINS IS COPYRIGHT AND REMAINS THE PROPERTY OF KHIAM CHUAN MARINE PTE LTD. IT IS NOT TO BE COPIED IN WHOLE OR IN PART OR DISCLOSED TO ANY THIRD PARTY FOR ANY PURPOSE WHATSOEVER WITHOUT PRIOR WRITTEN CONSENT.

APPROVED BY BV ON 19-01-04