

M3319

Flat Top Deck Cargo Barge

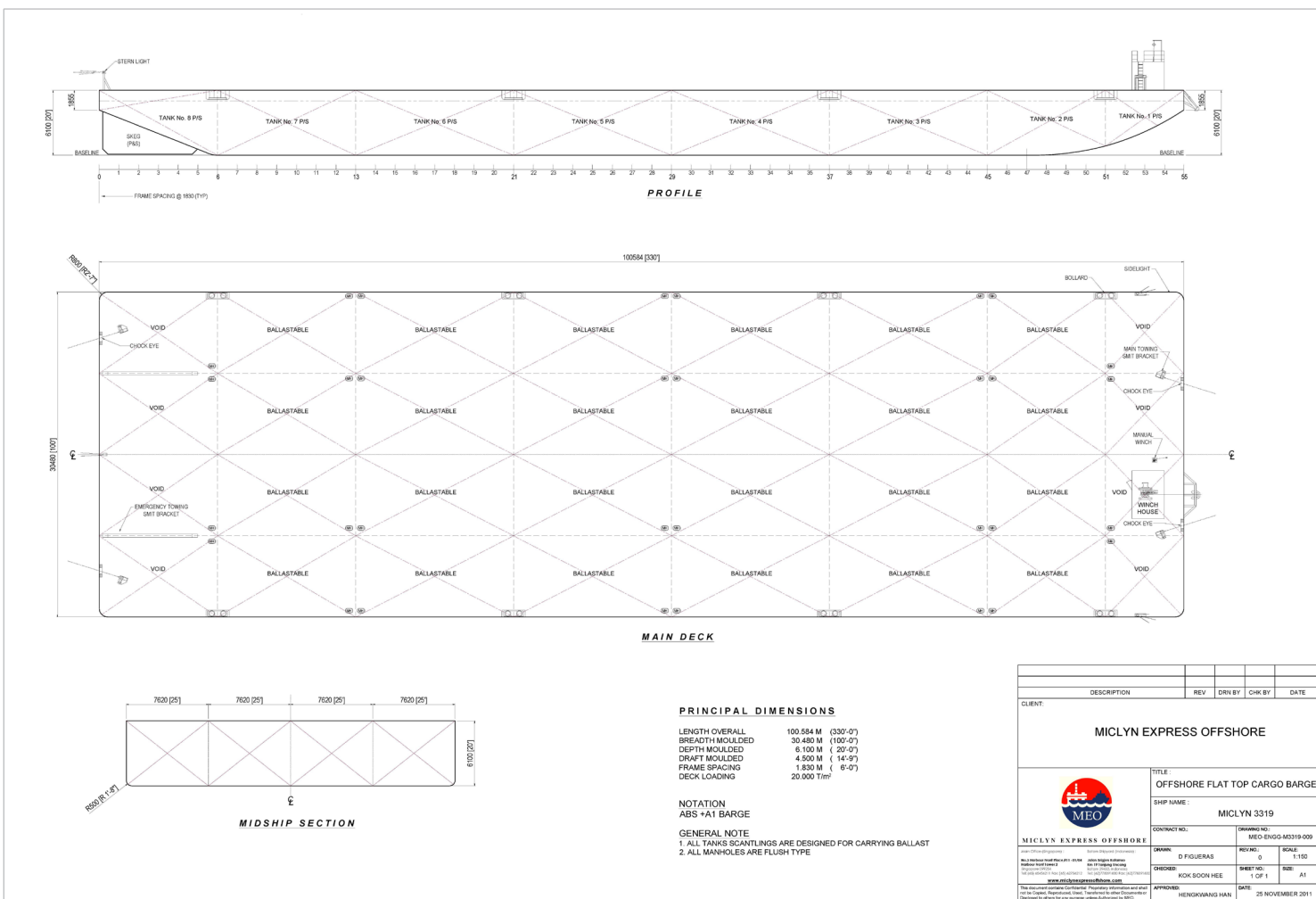
GENERAL

Year Built	2006
Flag / Port of Registry	Singapore / Singapore
Official Number	395000
Class / classification	Bureau Veritas
GRT / NRT	4,953 t / 1,486 t
Length Overall	330 ft (100.58 m)
Breadth	100 ft (30.48 m)
Depth Loaded	20 ft (6.10 m)
Draft Loaded	15 ft (4.74 m)
Dead Weight	12,000 tons (approx.)
Deck Loading	20 t / m ²
Transverse Bulkhead	Seven (7)
Longitudinal Bulkhead	Three (3)



DECK EQUIPMENT

Anchor Winch	1 x 10 t anchor windlass (Diesel Driven)
Anchor	1 x 2,100 kg stockless bower anchor
Smit Brackets	4 x smit towing brackets - P&S, fwd and aft
Stanchions	NIL
Navigation Lights	1 set solar type, P&S at fwd and aft
Mooring Bollards	8 x mooring bollards 12" N.B. (recessed)
Other	Barge is all welded steel construction with flush main deck, twin skags and Swim-ended on stern and stem.



Particulars are believed to be correct but not guaranteed. Owners reserve the rights to amend the specifications without notifications. Particulars are entirely without warranty as to correctness and interested parties must inspect vessel's certificates, drawings or physical inspection of vessel.