

M3320

Flat Top Deck Cargo Barge

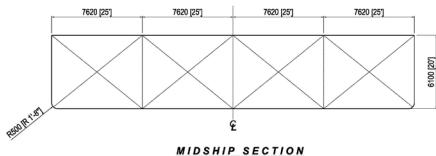
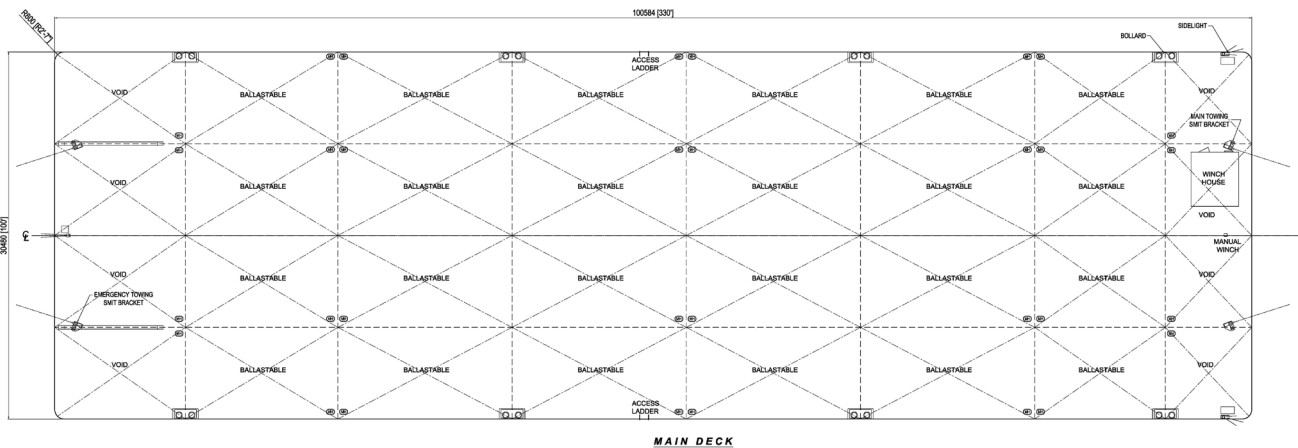
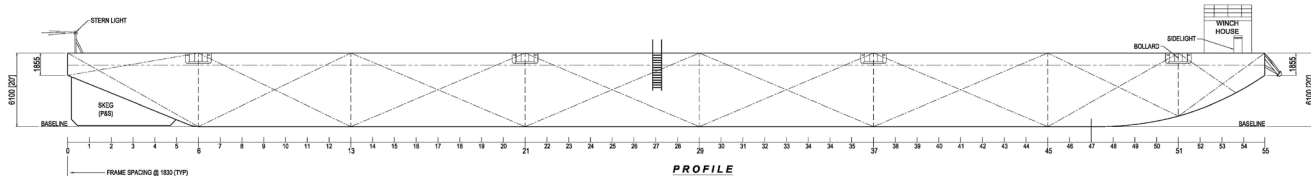
GENERAL

Year Built	2008
Flag / Port of Registry	Singapore / Singapore
Official Number	395001
Class / classification	Bureau Veritas
GRT / NRT	4,953 t / 1,486 t
Length Overall	330 ft (100.58 m)
Breadth	100 ft (30.48 m)
Depth Loaded	20 ft (6.10 m)
Draft Loaded	15 ft (4.72 m)
Dead Weight	12,000 t (approx.)
Deck Loading	20 t / m ²
Transverse Bulkhead	Seven (7)
Longitudinal Bulkhead	Three (3)



DECK EQUIPMENT

Anchor Winch	1 x 10 t anchor windlass (Diesel Driven)
Anchor	1 x 2,100 kg stockless bower anchor
Smit Brackets	2 x smit towing bracket - P&S, fwd and aft
Stanchions	NIL
Navigation Lights	1 set solar type, P&S at fwd and aft
Mooring Bollards	8 mooring bollards 12" N.B. (recessed)
Others	Barge is all welded steel construction with flush main deck, twin skegs and swim-ended on stern and stem.



PRINCIPAL DIMENSIONS

LENGTH OVERALL	100.584 M (330'-0")
BREADTH MOULDED	30.480 M (100'-0")
DEPTH MOULDED	6.100 M (20'-0")
DRAFT MOULDED	4.500 M (14'-0")
FRAME SPACING	1.830 M (6'-0")
DECK LOADING	20,000 T/M ²

NOTATION

BV ; I HULL, PONTOON, UNRESTRICTED NAVIGATION

GENERAL NOTE

1. ALL TANKS SCANTLING IS ARE DESIGNED FOR CARRYING BALLAST
2. ALL MANHOLES ARE FLUSH TYPE

UPDATE ARRANGEMENT	1	DCP	LR	9-7-2013
DESCRIPTION	REV	DRN BY	CHK BY	DATE
CLIENT: MICLYN EXPRESS OFFSHORE				
TITLE: OFFSHORE FLAT TOP CARGO BARGE				
SHIP NAME: MICLYN 3320				
CONTRACT NO: MEO-ENGG-M3320-010				
DRAWN: D FIGUERAS				
CHECKED: KOK SOON HEE				
DATE: 25 NOVEMBER 2011				

Particulars are believed to be correct but not guaranteed. Owners reserve the rights to amend the specifications without notifications.

Particulars are entirely without warranty as to correctness and interested parties must inspect vessel's certificates, drawings or physical inspection of vessel.