

MICLYN 285

Flat Top Deck Cargo Barge

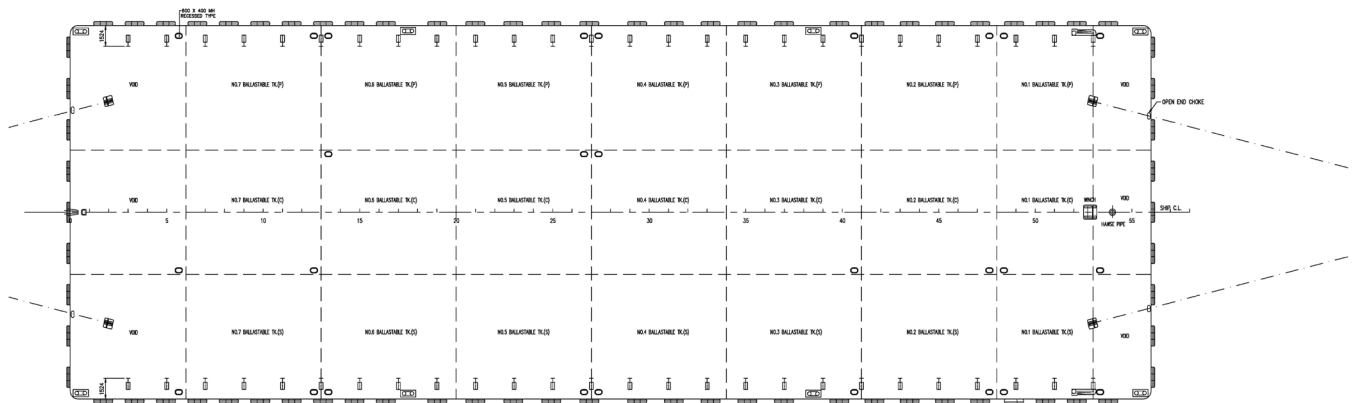
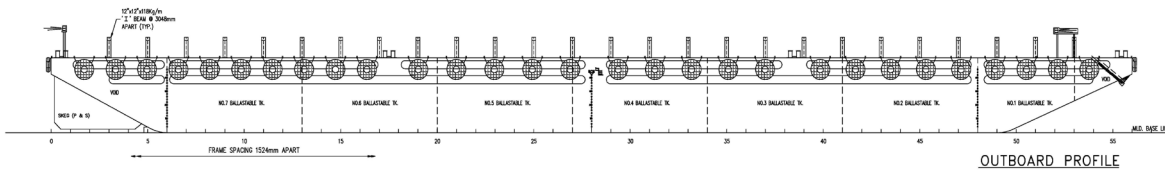
GENERAL

Year Built	2005
Flag / Port of Registry	Singapore / Singapore
Official Number	391947
Class / classification	Bureau Veritas
GRT / NRT	3,320 t / 996 t
Length Overall	280 ft (85.34 m)
Breadth	90 ft (27.43 m)
Depth Loaded	18 ft (5.50 m)
Draft Loaded	14.5 ft (4.39 m)
Dead Weight	7,800 t (approx.)
Deck Loading	15 t / m ²
Transverse Bulkhead	Eight (8)
Longitudinal Bulkhead	Two (2)




DECK EQUIPMENT

Anchor Winch	1 x hand operated emergency anchor winch
Anchor	1 x 2,000 kg stockless bower anchor
Smit Brackets	4 x smit towing brackets - P&S, fwd and aft
Stanchions	26 stanchions on each side
Navigation Lights	1 set solar type, P&S at fwd and aft
Mooring Bollards	4 sets double mooring bollards each side (deck)



PRINCIPAL DIMENSIONS

LENGTH OVERALL	85.344 M (280'-0")
BREADTH MOULDED	27.432 M (90'-0")
DEPTH MOULDED	5.500 M (18'-0")
DRAFT MOULDED	4.420 M (14'-6")
DECK LOADING	15 MT/M ²

DESCRIPTION	REV	DRN BY	CHK BY	DATE
CLIENT: MICLYN EXPRESS OFFSHORE				
		TITLE: OFFSHORE FLAT TOP CARGO BARGE SHIP NAME: MICLYN 285		
MICLYN SHIPBUILDING & ENGINEERING <small>100, Jalan Sultan Iskandar, Singapore 119077</small>		CONTRACT NO: MICLYN 285 DRAWING NO: MEG-ENGG-MOB-016	REV NO: 0 SCALE: 1:100	DATE: 7 MARCH 2013
<small> This document contains Confidential, Proprietary Information and shall be held in strictest confidence. It shall not be disclosed, copied, reproduced or transmitted in any form or by any means, electronic or mechanical, including photocopying, recording, or by any information storage and retrieval system, without the prior written permission of MEO. </small>		DRAWN: D FIGUEROA CHECKED: U REYES	SHEET NO: 1 OF 1 SIZE: A1	APPROVED: [Signature] DATE: 7 MARCH 2013

Particulars are believed to be correct but not guaranteed. Owners reserve the rights to amend the specifications without notifications. Particulars are entirely without warranty as to correctness and interested parties must inspect vessel's certificates, drawings or physical inspection of vessel.