

MICLYN 288

Flat Top Deck Cargo Barge

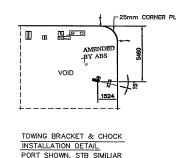
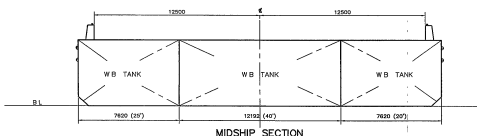
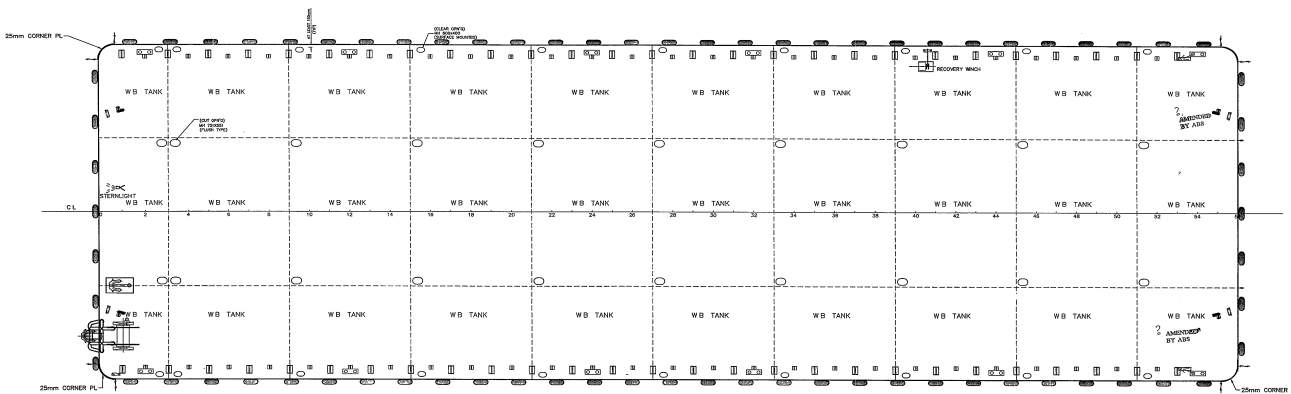
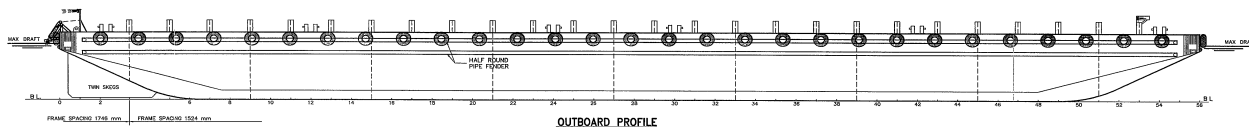
GENERAL

Year Built	2006
Flag / Port of Registry	Singapore / Singapore
Official Number	392596
Class / classification	Bureau Veritas
GRT / NRT	3,292 t / 987 t
Length Overall	280 ft (85.34 m)
Breadth	90 ft (27.43 m)
Depth Loaded	18 ft (5.49 m)
Draft Loaded	14.5 ft (4.42 m)
Dead Weight	7,800 t (approx.)
Deck Loading	15 t / m ²
Transverse Bulkhead	Eight (8)
Longitudinal Bulkhead	Two (2)



DECK EQUIPMENT

Anchor Winch	1 x manual anchor winch (Diesel Driven)
Anchor	1 x 2,100 kg stockless bower anchor
Smit Brackets	3 x smit towing brackets - P&S, fwd and aft
Stanchions	26 stanchions on each side
Navigation Lights	1 set solar type, P&S at fwd and aft
Mooring Bollards	4 sets double mooring bollards each side (deck)



PRINCIPAL PARTICULARS

LENGTH O(A)(M)(D)	282' (85.976 m)
BEAM(M)(D)	90' (27.439 m)
DRAFT(M)(D)	15' (4.572 m)
DRAFT LOADED	15' (4.572 m)
DECK LOAD	15t/m ²

REVIEWED
AS INDICATED IN
ABS Letter dated
14 JUL 2006
ABS APPROVED
SINGAPORE

CONAN WU & ASSOCIATES PTE LTD
14 JUL 2006

OWNER	CEISO (SINGAPORE) PTE LTD	YARD NO.	HY0202-02
BUILDER	HANYONG YENHA SHIPBUILDING CO LTD		
CLASS	ABS		
DATE	14 JUL 2006	REVISED BY	
SHIP	282' x 90' x 18' DECK CARGO/TANK BARGE	REV BY	
TITLE	GENERAL ARRANGEMENT		
CONAN WU & ASSOCIATES	NAVAL ARCHITECTS		
DRAWN	T.S.CHUA	CHECKED	T.S.CHUA
SCALE	1:150	DATE	14 JUL 2006

Particulars are believed to be correct but not guaranteed. Owners reserve the rights to amend the specifications without notifications. Particulars are entirely without warranty as to correctness and interested parties must inspect vessel's certificates, drawings or physical inspection of vessel.