

MICLYN 303

Flat Top Deck Cargo Barge

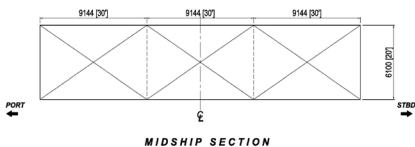
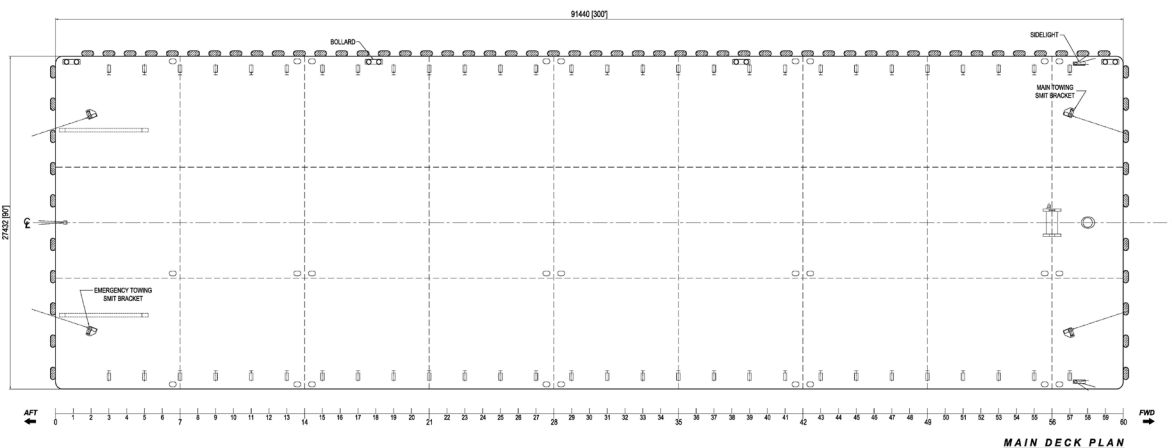
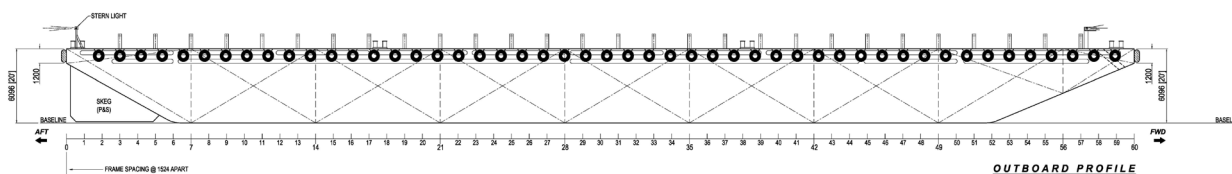
GENERAL

Year Built	2006
Flag / Port of Registry	Singapore / Singapore
Official Number	392269
Class / classification	American Bureau of Shipping
GRT / NRT	3,931 t / 1,179 t
Length Overall	300 ft (91.44 m)
Breadth	90 ft (27.43 m)
Depth Loaded	20 ft (6.09 m)
Draft Loaded	15.5 ft (4.80 m)
Dead Weight	8,900 t (approx.)
Deck Loading	15 t / m ²
Transverse Bulkhead	Eight (8)
Longitudinal Bulkhead	Two (2)



DECK EQUIPMENT

Anchor Winch	1 x hand operated emergency anchor winch
Anchor	1 x 2,100 kg stockless bower anchor
Smit Brackets	4 x smit towing brackets - P&S, fwd and aft
Stanchions	28 stanchions on each side
Navigation Lights	1 set solar type, P&S at fwd and aft
Mooring Bollards	8 sets double mooring bollards each side (deck)



PRINCIPAL DIMENSIONS

LENGTH OVERALL	91.440 M (300'-0")
BREADTH MOULDED	27.432 M (90'-0")
DEPTH MOULDED	6.096 M (20'-0")
DRAFT MOULDED	4.800 M (15'-6")
FRAME SPACING	1.524 M (5'-0")
DECK LOADING	15.000 T/m

CLASS: ABS

DESCRIPTION	REV	DRN BY	CHK BY	DATE
CLIENT: MICLYN EXPRESS OFFSHORE				
TITLE: DECK CARGO BARGE				
SHIP NAME: MICLYN 303				
CONTRACT NO.:		DRAWING NO.:		
MEO-ENG-M000-013		MEO-ENG-M000-013		
DESIGN:	REVISED:	DATE:	SCALE:	
L.J. REYES	0	07 MARCH 2013	1:150	
CHECKED:	DRAWN:	SHEET NO.:	SIZE:	
D. FIGUERAS		1 OF 1	A1	
APPROVED:	DATE:			
H.K. HAN	07 MARCH 2013			

Particulars are believed to be correct but not guaranteed. Owners reserve the rights to amend the specifications without notifications.

Particulars are entirely without warranty as to correctness and interested parties must inspect vessel's certificates, drawings or physical inspection of vessel.