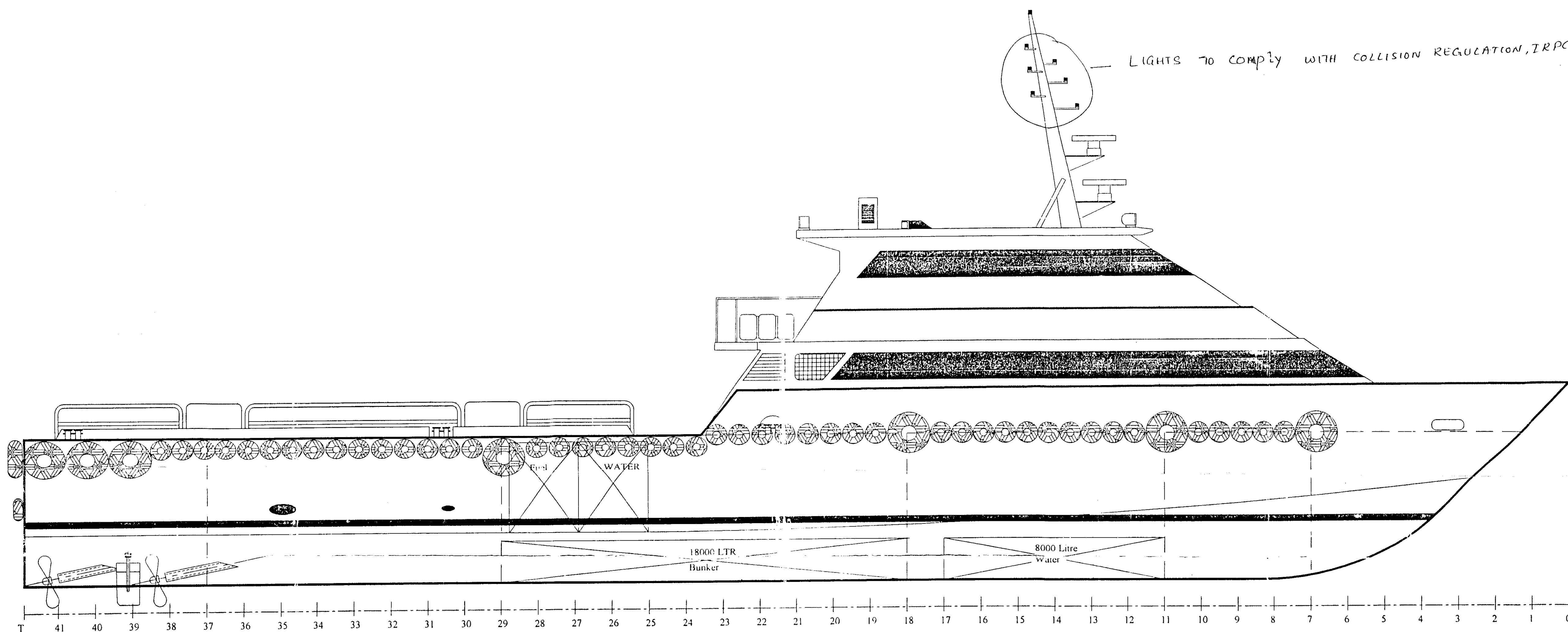
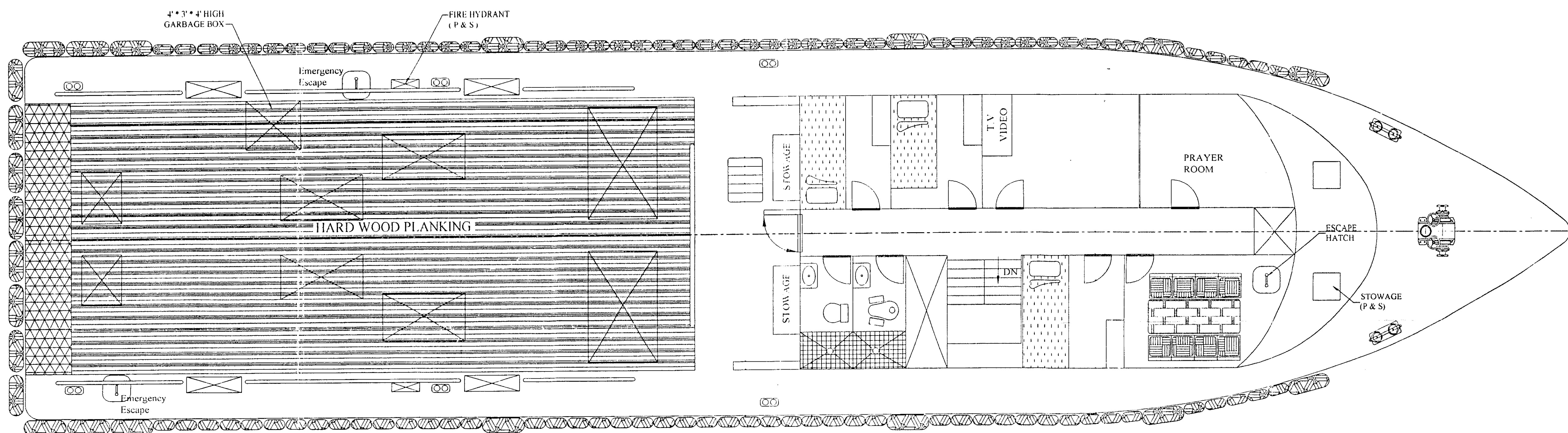


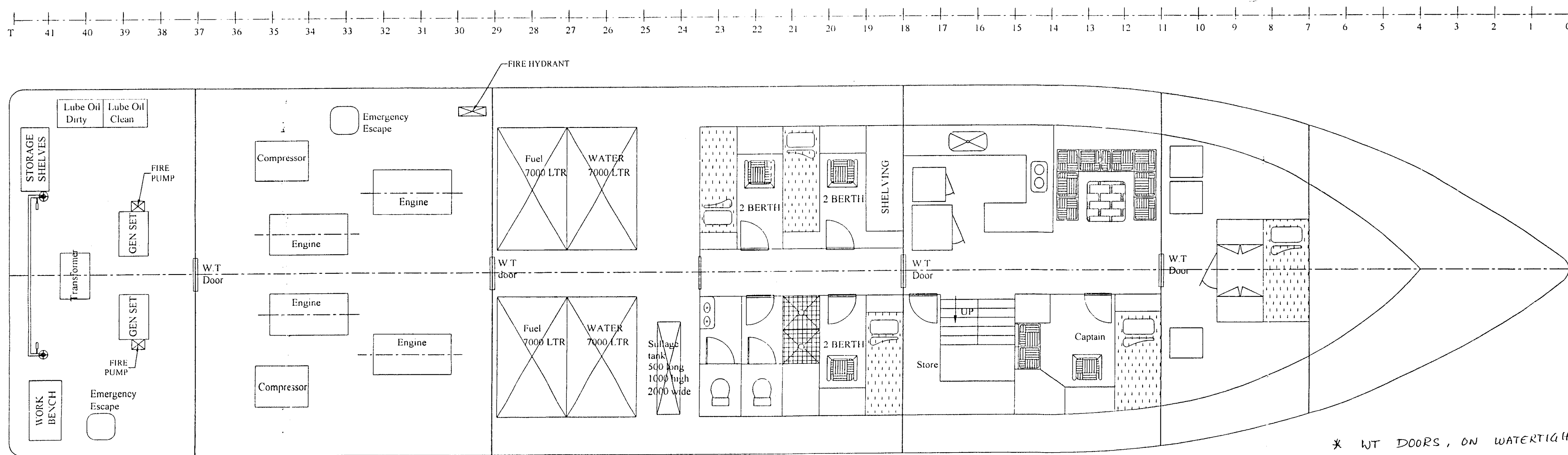
LIGHTS TO COMPLY WITH COLLISION REGULATION, I.R.P.C. 1972



PROFILE



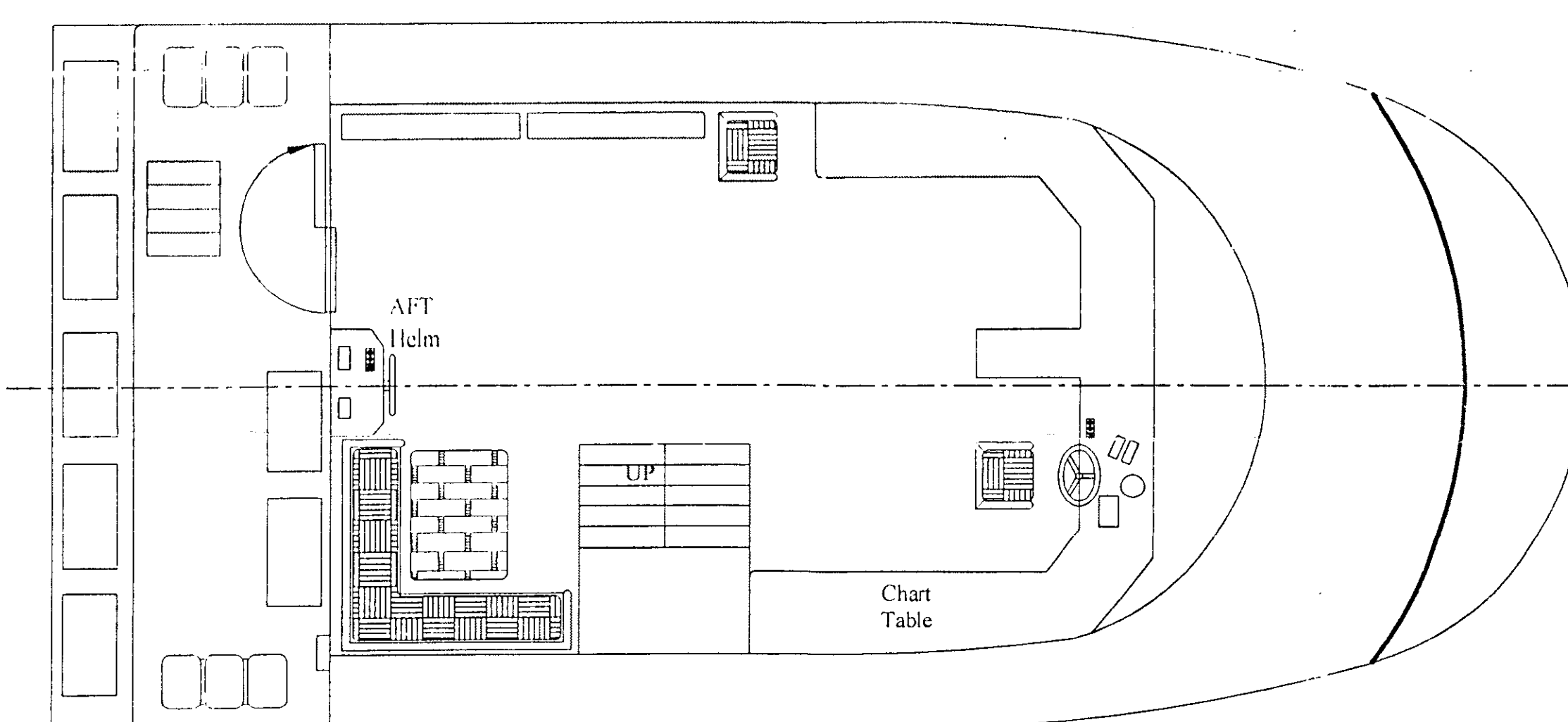
MAIN DECK PLAN



BELOW DECK PLAN

* W/T DOORS, ON WATERTIGHT BULKHEADS TO BE NORMALLY KEPT CLOSED, WHILE AT SEA. USE OF DOOR TO BE REGULATED BY THE MASTER.

PARTICULARS	
LENGTH O.A	110' FEET
BEAM	26' 0"
DEPTH	3.28 M
DRAFT	1.50 M (max.)
FUEL	32000 LTRS
WATER	22000 LTRS
CARGO	35 TONNES
PASSENGERS	5
CREW	6



TOPDECK PLAN

Note:-
Frame Spacing :800

BUREAU VERITAS Section 10/987M.
REVIEWED
subject to the observations in red
and only for parts exceeding Classification.
All particulars not shown on the drawing and concerning
Construction to be as per Rules.
Singapore 2-2-09-01



Seaspray Aluminium Boats "Emirates"(L.L.C)

P.O. Box: 1796
AJMAN

UNITED ARAB EMIRATES
Email: seaspray@emirates.net.ae

Tel: 06 7439993
Fax: 06 7439229

110' FOOT CREW / SECURITY BOAT

ABEER 36

Checked	Drawn	Scale	Date	Dwg No.
Abu Rifa	Sqbal	1:50	MAR.2000	444-C02-155-1

This drawing and all information shown hereon are the exclusive property of Seaspray Aluminium Boats "Emirates" and submitted only on a confidential basis. The Recipient agrees not to reproduce the drawing, to return it on request and that no disclosure of the drawing or the information shown hereon will be made to a third party without prior written consent from Seaspray Aluminium Boats "Emirates".