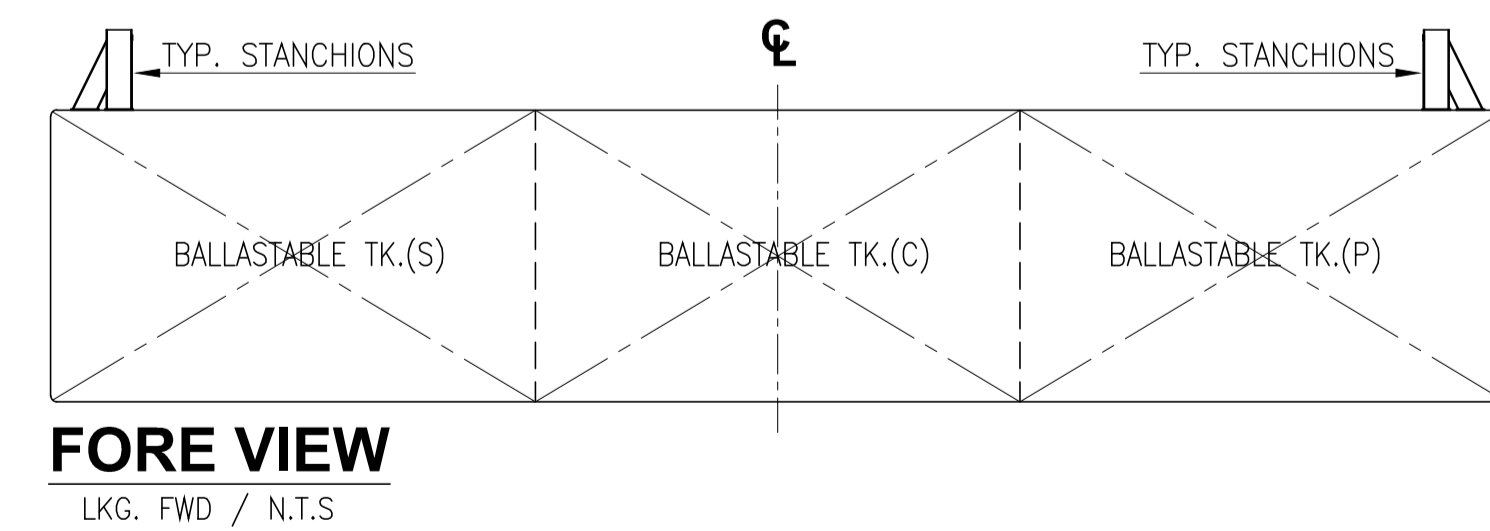
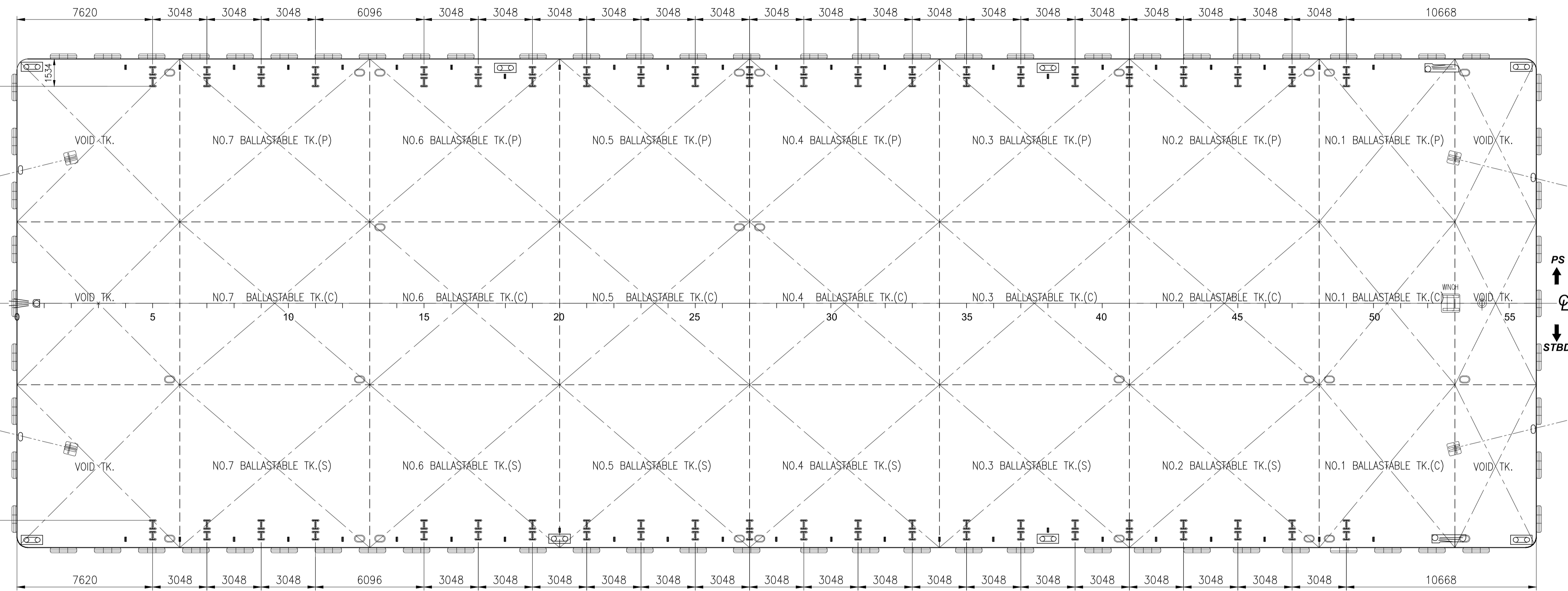
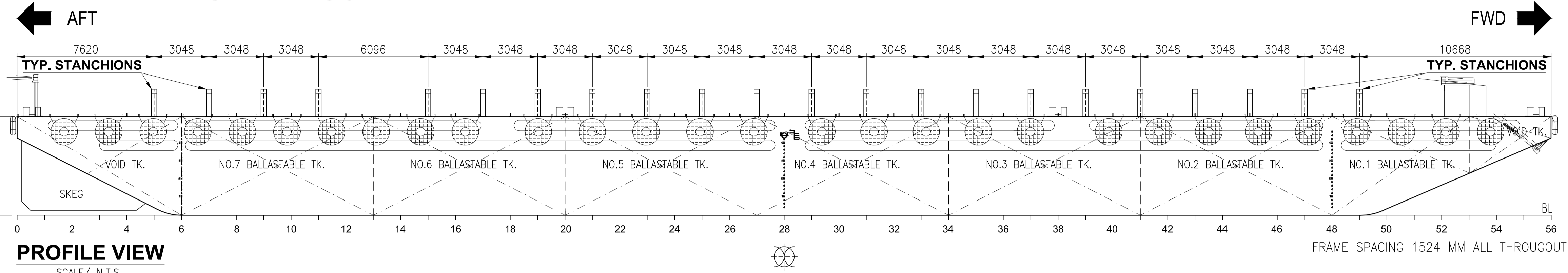


GENERAL ARRANGEMENT PLAN for " MICLYN 286 "



PRINCIPAL PARTICULARS

LENGTH OVERALL - 85.344 M. (280'-00")
 BREADTH MLD. - 27.432 M. (90'-00")
 DEPTH MLD. - 5.500 M. (18'-00")
 DRAFT MLD. - 4.420 M. (14'-06")
 DECK LOAD - 15.000 TON/M2

- NOTE :
- ALL DIMENSIONS ARE IN MM UNLESS INDICATED OTHERWISE.
 - REFER TO " EXTERNAL TYP. STANCHION DETAIL (AS FITTED)". BY. S.N (EOS MIDDLE EAST)

DRAWING NO	REV	DRAWING TITLE	REV	DATE	DESCRIPTION	ORIGINATOR	REVIEWER	APPROVER	CLIENT
	1		06-11-15		UPDATED AS PER CURRENT STANCHIONS/ DECK PAD EYES	JB	RS	CT	-
	0		27-10-15		ISSUED FOR REFERENCE ONLY	JB	RS	CT	-
REFERENCE DRAWING		REVISION HISTORY							

This Document Contains Confidential Proprietary Information And Shall Not Be Copied, Reproduced, Used, Transferred To Other Documents Or Disclosed To Others For Any Purpose Unless Authorized By EOS

Purchaser Review & Comments shall not be assumed to indicate either responsibility or liability for accuracy & completeness of this document or to alter any contractual terms and conditions.

CONTRACT NO.	:	
DRAWN	:	JB
DFT. CHECKED	:	RS
ENGINEER	:	
APPROVED	:	CT
DATE	:	27-10-15
SCALE [A3 SIZE]	:	



3 HARBOURFRONT PLACE,
 11-01/04 HARBOURFRONT TOWER 2,
 SINGAPORE 099254
 TEL: (65) 6545 6211
 FAX: (65) 6275 6212

CONTRACT TITLE: Marine Transportation of Offshore Pipe Lines

TITLE: GENERAL ARRANGEMENT PLAN
 BARGE - MICLYN 286

EOS DWG. NO.	EOS-ENGG-002	SHT.	1	OF	1	REV.	1
--------------	--------------	------	---	----	---	------	---