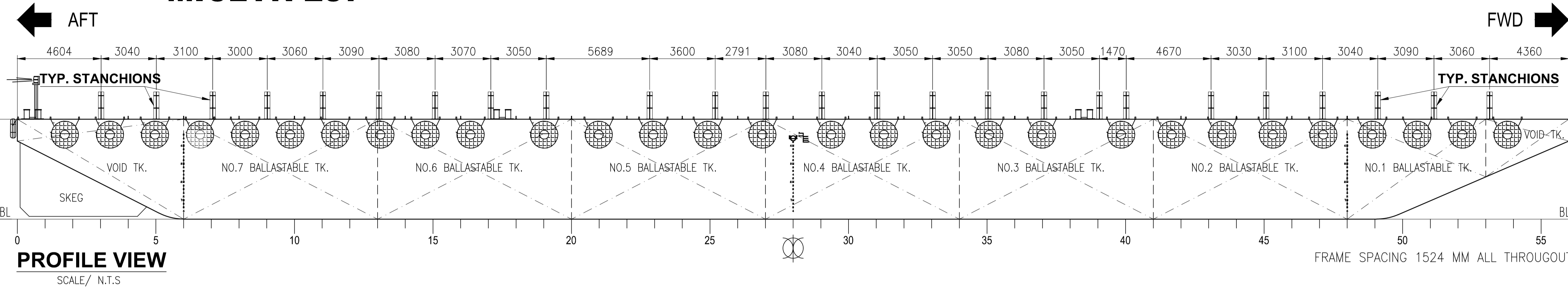
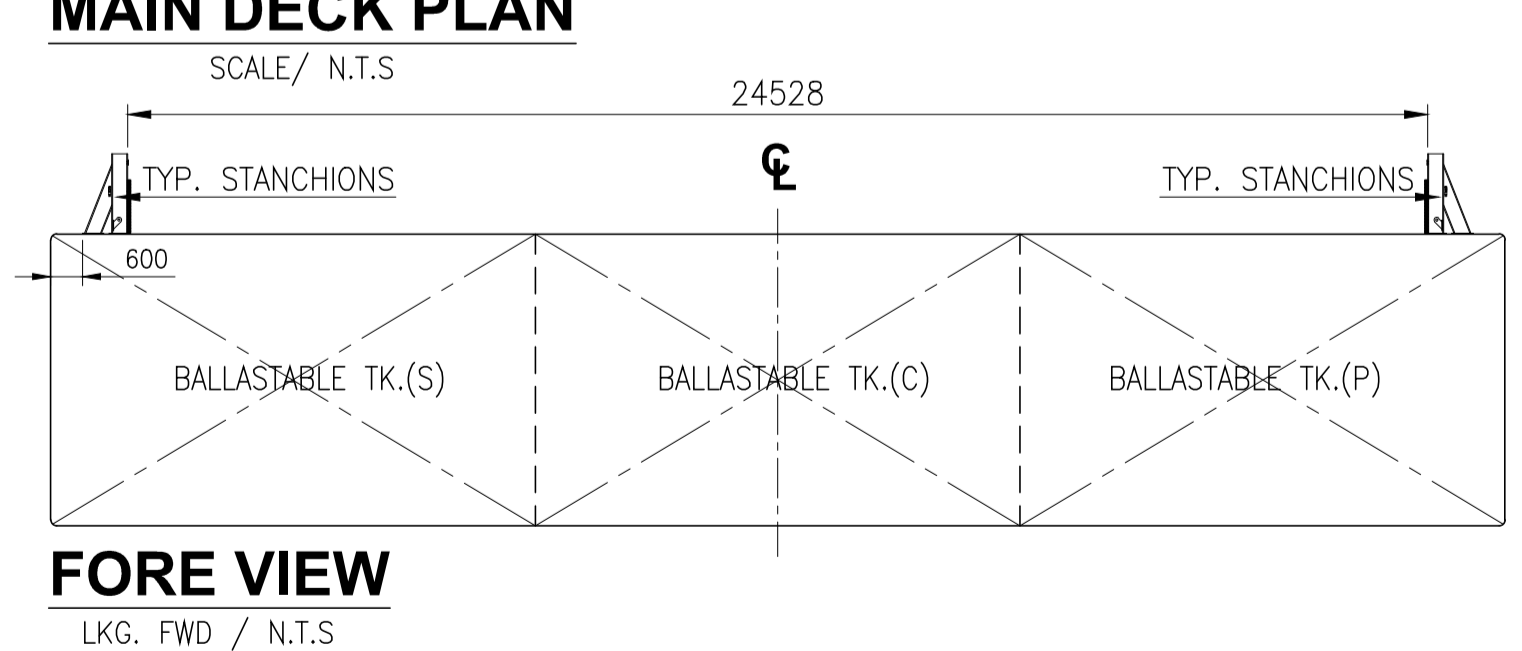
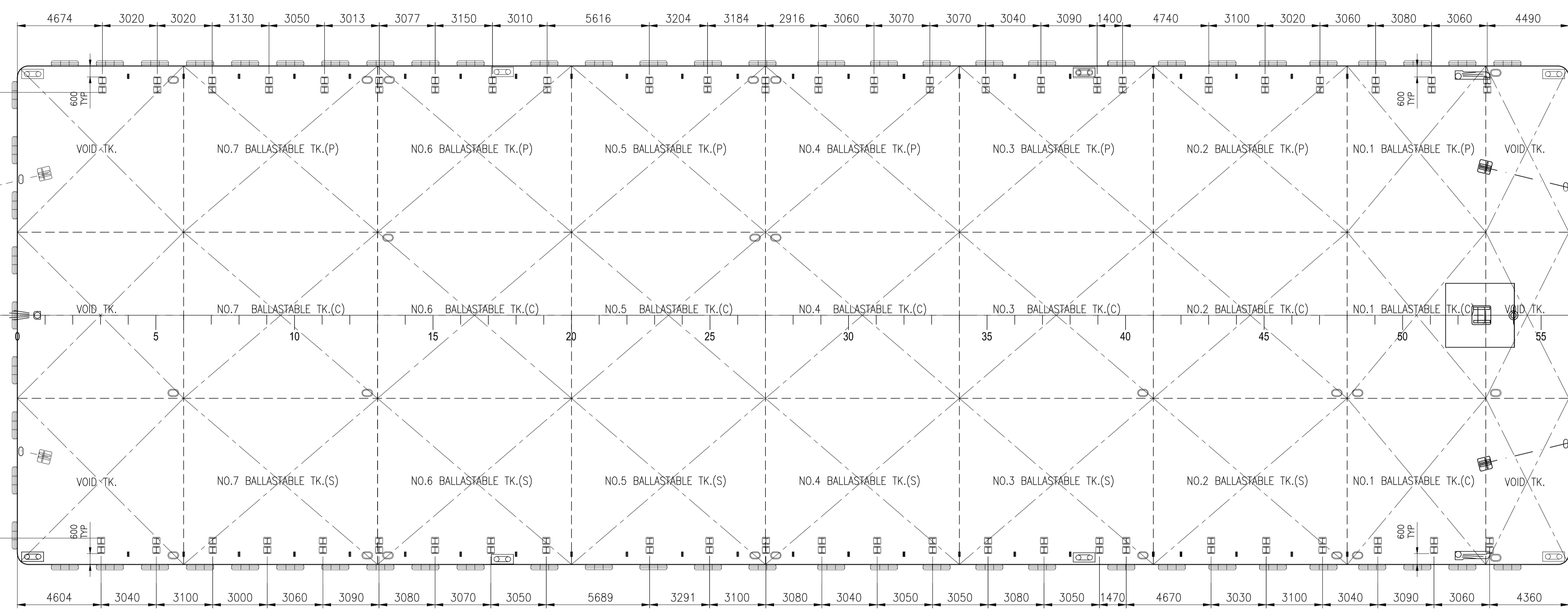


# GENERAL ARRANGEMENT PLAN for " MICLYN 287 "



**PRINCIPAL PARTICULARS**

LENGTH OVERALL	- 85.344 M. ( 280'-00")
BREADTH MLD.	- 27.432 M. ( 90'-00")
DEPTH MLD.	- 5.500 M. ( 18'-00")
DRAFT MLD.	- 4.420 M. ( 14'-6")
DECK LOAD	- 15.000 TON/M2



NOTE :  
1. ALL DIMENSIONS ARE IN MM UNLESS INDICATED OTHERWISE.  
2. REFER TO " EXTERNAL TYP. STANCHION DETAIL (AS FITTED)".  
DWG. NO. KCM/Q361(A) - H3, REV. 0, DATED 05/08/05  
BY KC KHAM MARINE PTE. LTD.

DRAWING NO				REV				DRAWING TITLE				REV				DATE				DESCRIPTION				ORIGINATOR				REVIEWER				APPROVER				CLIENT											
1				06-11-15				UPDATED AS PER CURRENT STANCHIONS/ DECK PAD EYES				JBI				RS				CT				-				-				-				-											
0				15-09-15				ISSUED FOR REFERENCE ONLY				JBI				RS				CT				-				-				-				-											
CONTRACT NO.				DRAWN				DFT. CHECKED				ENGINEER				APPROVED				DATE				CONTRACT TITLE				TITLE				EOS DWG. NO.				SHT.				OF				REV.			
-				JBI				RS				-				CT				15-09-15				Marine Transportation of Offshore Pipe Lines				GENERAL ARRANGEMENT PLAN BARGE - MICLYN 287				EOS-ENGG-001				1				1				1			

This Document Contains Confidential Proprietary Information And Shall Not Be Copied, Reproduced, Used, Transferred To Other Documents Or Disclosed To Others For Any Purpose Unless Authorized By EOS

Purchaser Review & Comments shall not be assumed to indicate either responsibility or liability for accuracy & completeness of this document or to alter any contractual terms and conditions.

**EOS**  
EXPRESS OFFSHORE SOLUTIONS

3 HARBOURFRONT PLACE,  
11-01/04 HARBOURFRONT TOWER 2,  
SINGAPORE 099254  
TEL: (65) 6545 6211  
FAX: (65) 6275 6212