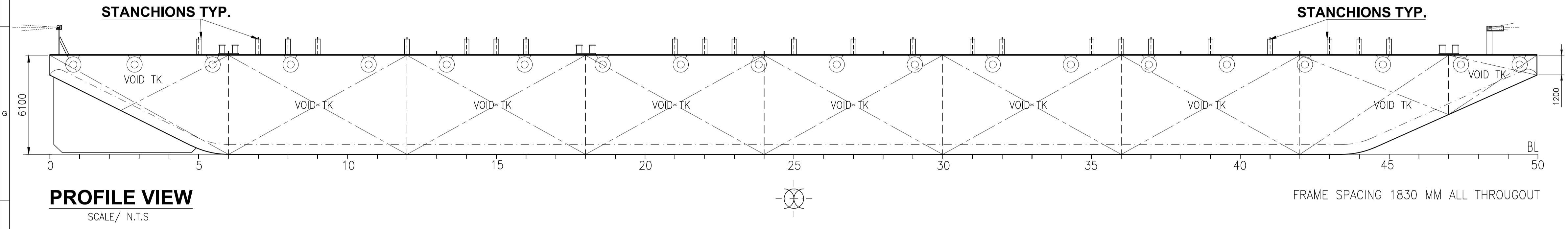


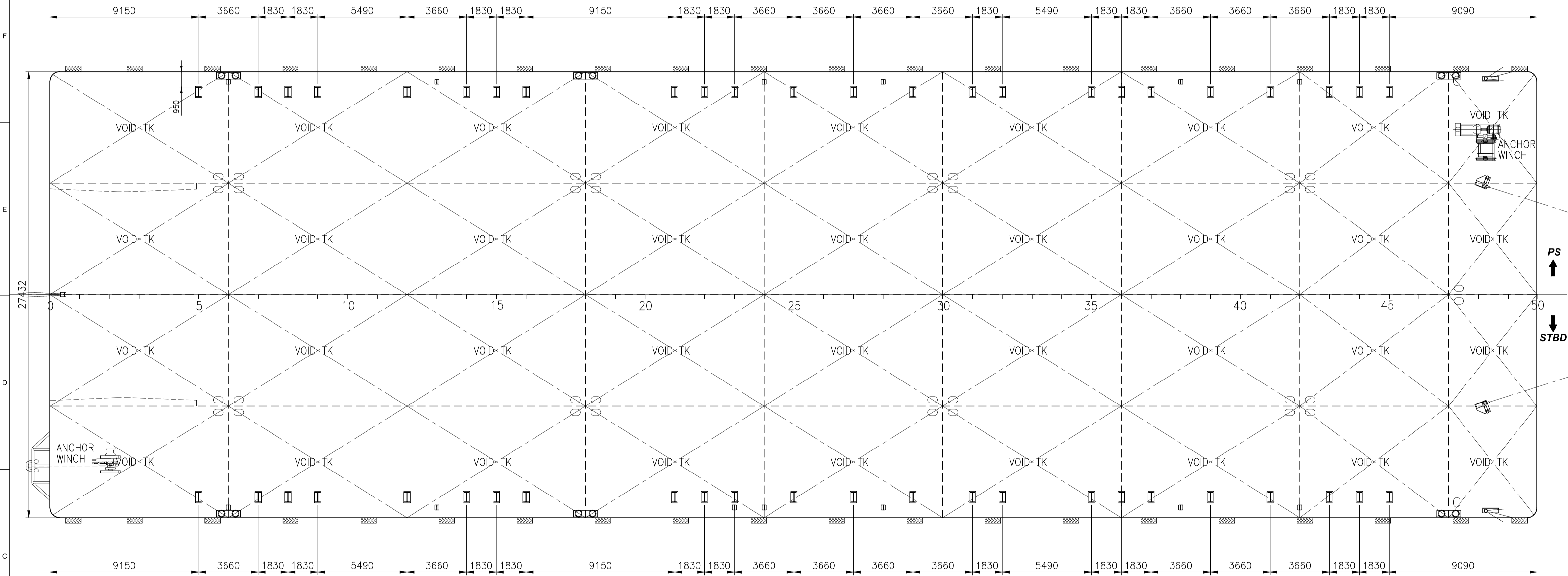
GENERAL ARRANGEMENT PLAN for "MICLYN 305"

← AFT

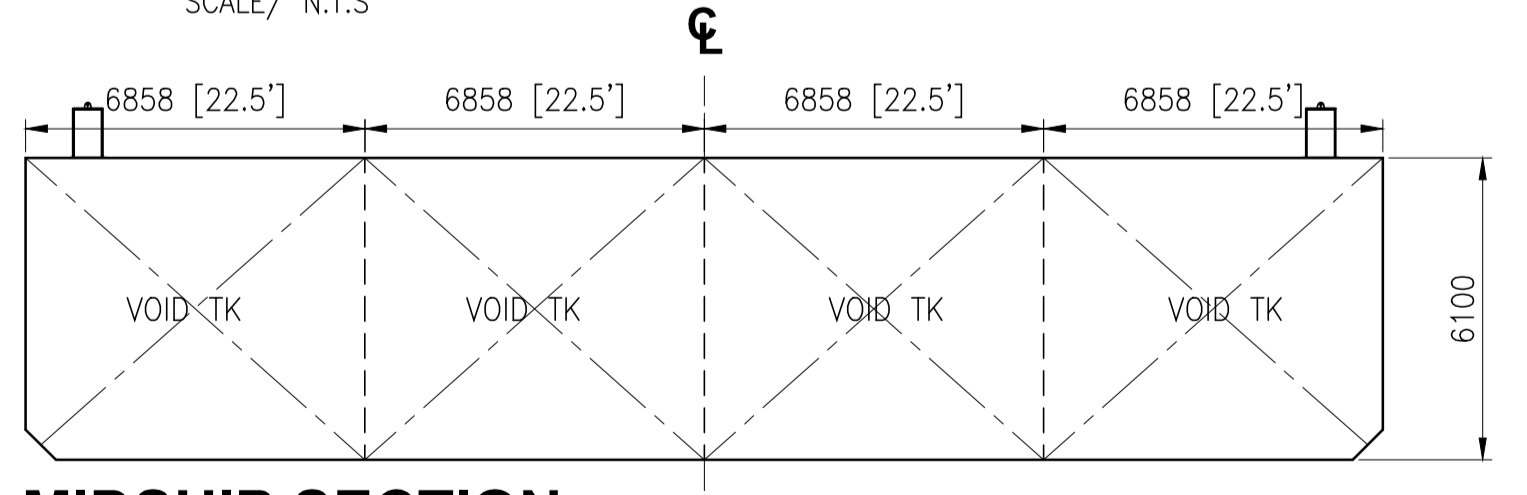
FWD →



PROFILE VIEW
SCALE/ N.T.S.



MAIN DECK PLAN
SCALE/ N.T.S.



MIDSHIP SECTION
LKG. FWD / N.T.S.

PRINCIPAL PARTICULARS

- LENGTH OVERALL - 91.440 M. (300'-00")
- BREADTH MLD. - 27.432 M. (90'-00")
- DEPTH MLD. - 6.100 M. (20'-00")
- DRAFT MLD. - 4.800 M. (15'-06")
- DECK LOAD - 15.000 TON/M2
- CLASS NOTATION: ABS + A1 TANK BARGE

NOTE :
 1. ALL DIMENSIONS ARE IN MM UNLESS INDICATED OTHERWISE.
 2. REFER TO "EXTERNAL TYP. STANCHION DETAIL (AS FITTED)".
 BY E.O.S - MIDDLE EAST, U.A.E

DRAWING NO				REV				DRAWING TITLE				REV				DATE				DESCRIPTION				ORIGINATOR				REVIEWER				APPROVER				CLIENT				APPROVED				DATE															

This Document Contains Confidential Proprietary Information And Shall Not Be Copied, Reproduced, Used, Transferred To Other Documents Or Disclosed To Others For Any Purpose Unless Authorized By EOS

Purchaser Review & Comments shall not be assumed to indicate either responsibility or liability for accuracy & completeness of this document or to alter any contractual terms and conditions.

CONTRACT NO. : -
 DRAWN : JBI
 DFT. CHECKED : RS
 ENGINEER :
 APPROVED : CT
 DATE : 07-03-15

SCALE [A3 SIZE] :

EOS
EXPRESS OFFSHORE SOLUTIONS

3 HARBOURFRONT PLACE,
11-01/04 HARBOURFRONT TOWER 2,
SINGAPORE 099254
TEL: (65) 6545 6211
FAX: (65) 6275 6212

CONTRACT TITLE: Marine Transportation of Offshore Pipe Lines

TITLE: **GENERAL ARRANGEMENT PLAN**
BARGE - MICLYN 305

EOS DWG. NO. EOS-ENGG-021 SHT. 1 OF 1 REV. 1