

MICLYN 253

Flat Top Deck Cargo Barge

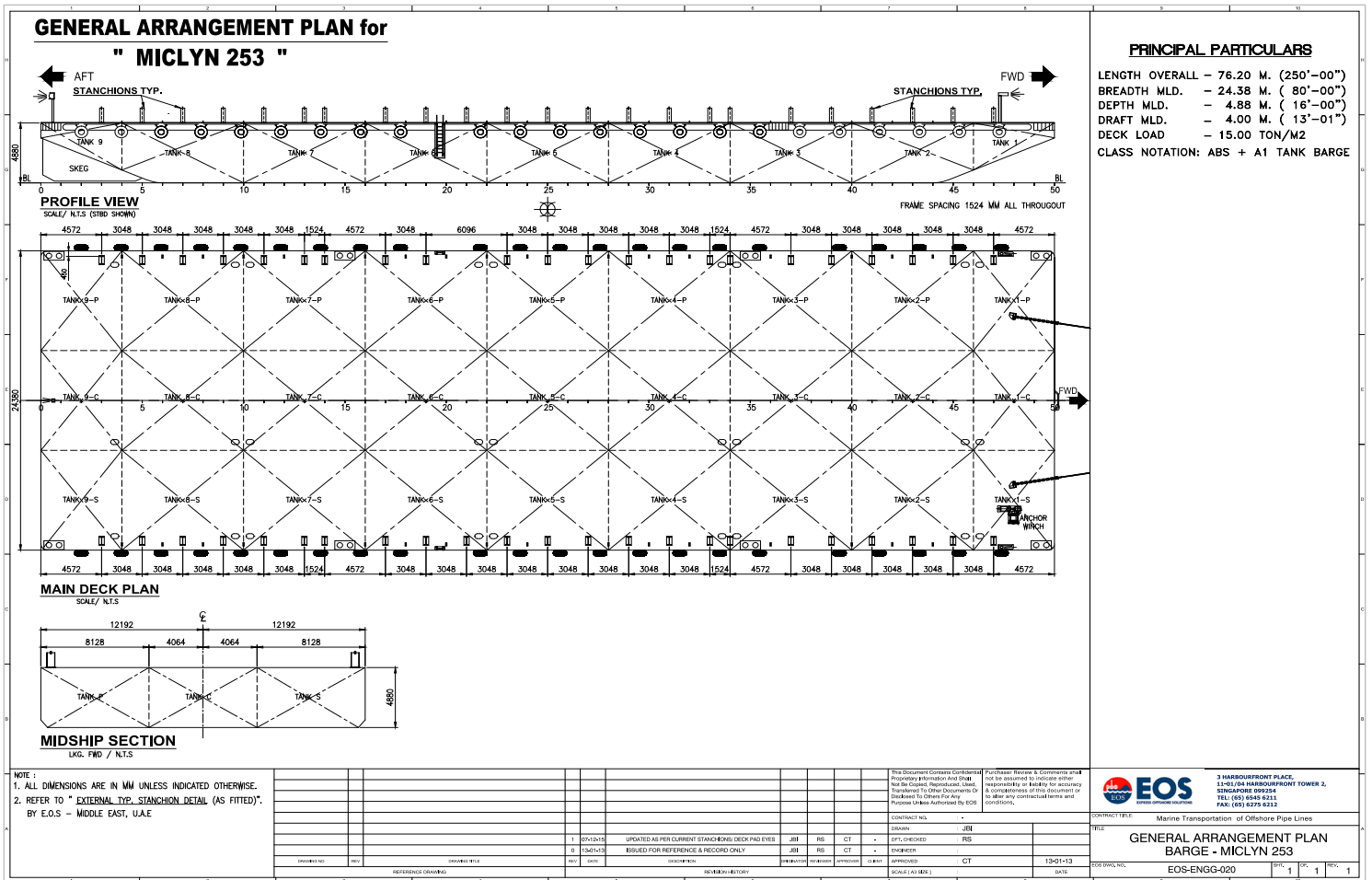
GENERAL

Year Built	2006
Flag / Port of Registry	Singapore / Singapore
Official Number	392263
Class / classification	Bureau Veritas
GRT / NRT	2,305 t / 691 t
Length Overall	250 ft (73.18 m)
Breadth	80 ft (24.38 m)
Depth Loaded	16 ft (4.88 m)
Draft Loaded	12.5 ft (3.81 m)
Dead Weight	5,000 tons (approx.)
Deck Loading	15 t / m ²
Transverse Bulkhead	Seven (7)
Longitudinal Bulkhead	Two (2)



DECK EQUIPMENT

Anchor Winch	1 x hand operated emergency anchor winch
Anchor	1 x 1,000kg stockless bower anchor
Smit Brackets	4 x smit towing brackets - P&S, fwd and aft
Stanchions	23 stanchions on each side
Navigation Lights	1 set solar type, P&S at fwd and aft
Mooring Bollards	4 sets double mooring bollards each side
Other	Barge is all welded steel construction with flush main deck and twin skegs. Hand driven bridle recovery winches (2) fwd/aft.



Particulars are believed to be correct but not guaranteed. Owners reserve the rights to amend the specifications without notifications. Particulars are entirely without warranty as to correctness and interested parties must inspect vessel's certificates, drawings or physical inspection of vessel.