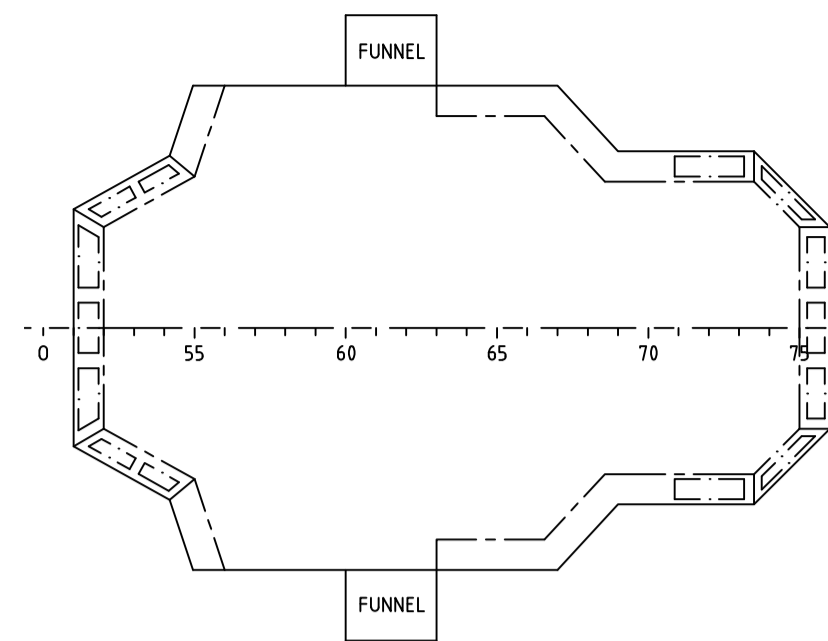


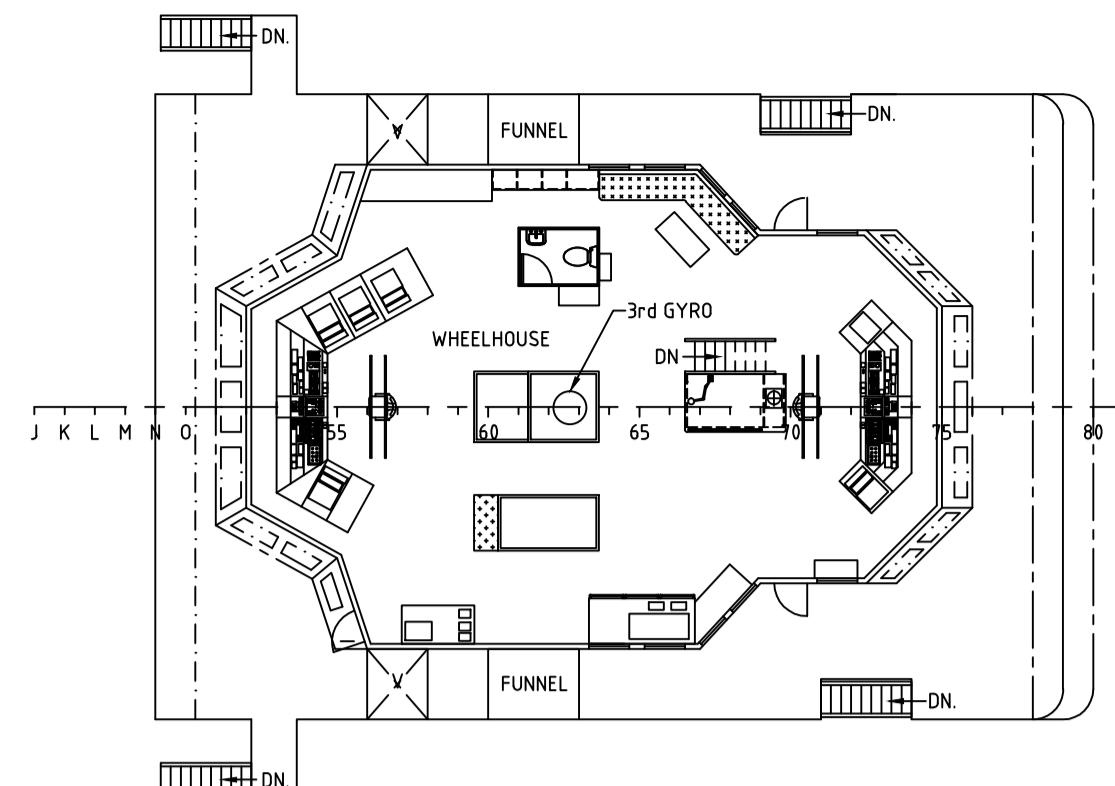
PRINCIPAL PARTICULARS:

LENGTH O.A.	70.25m
LENGTH W.L.	67.70m
BEAM MLD.	16.00m
DEPTH MLD.	6.00m
DRAFT DESIGNED / max.	4.50m / 5.10m
COMPLEMENT	BERTHS SUMMARY :
	2 x 1 BERTH CABIN = 2 MEN
	13 x 2 BERTH CABIN = 26 MEN
	8 x 4 BERTH CABIN = 32 MEN
	2 x 5 BERTH CABIN = 10 MEN
	TOTAL = 70 MEN

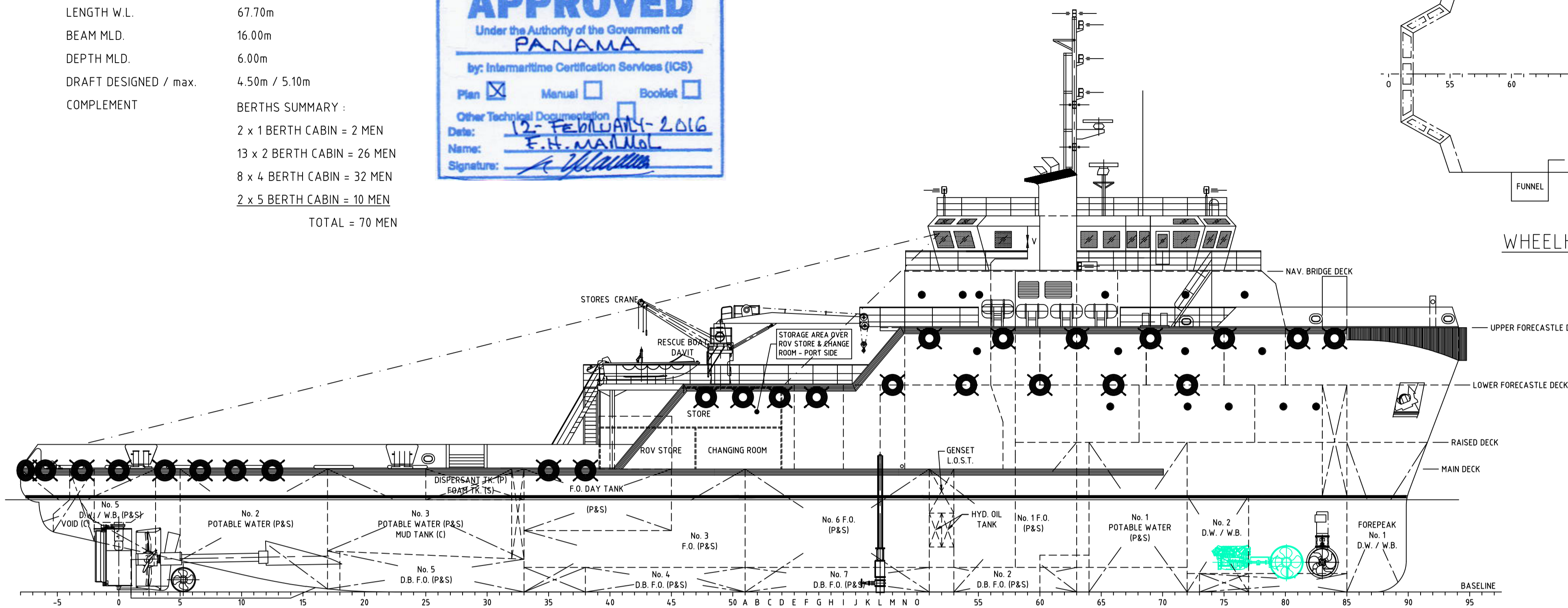
MICLYN ENTERPRISE
IMO No.9474436



WHEELHOUSE TOP

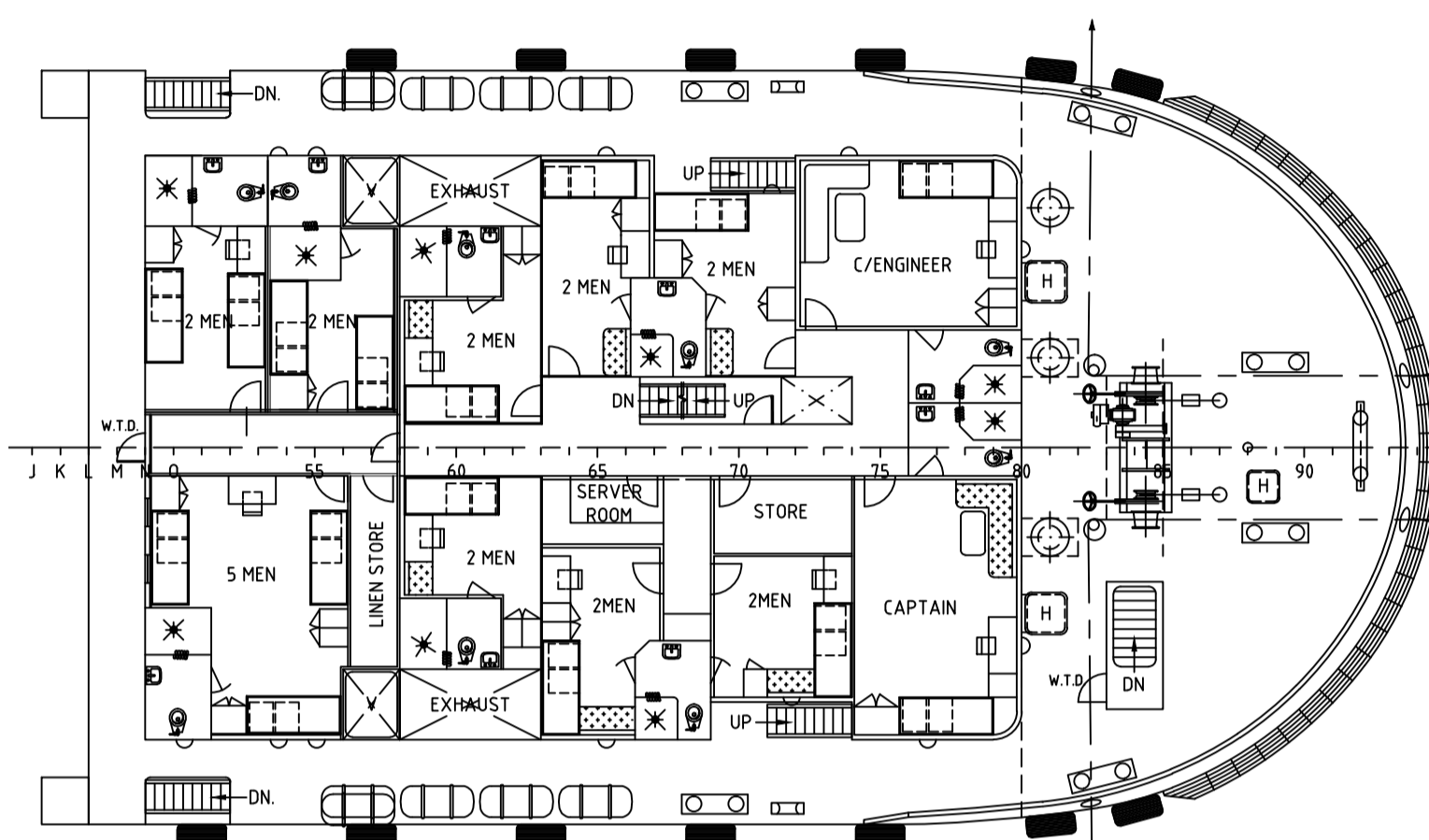


NAV. BRIDGE DECK



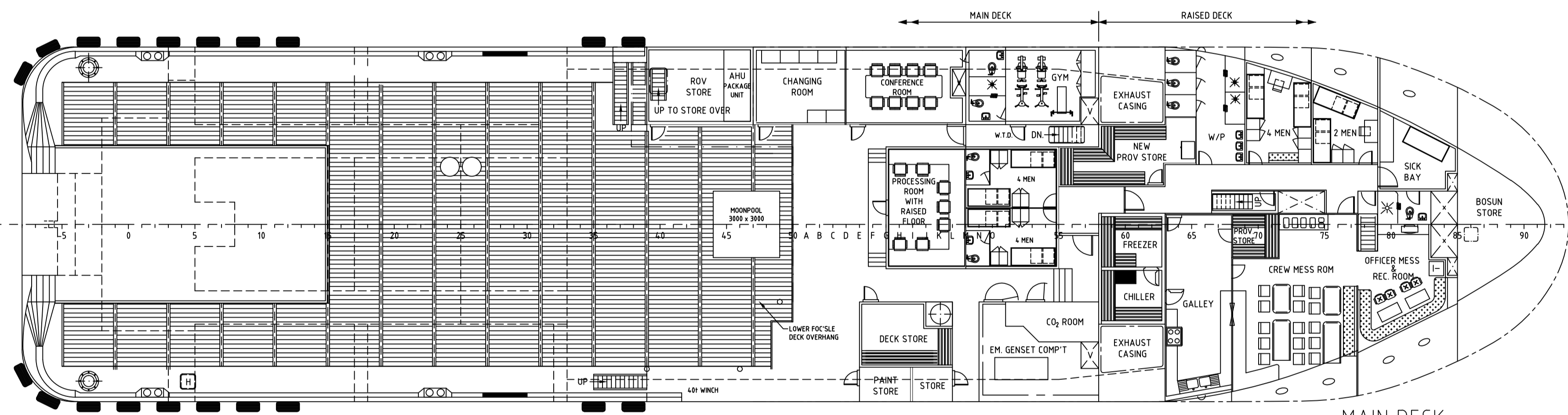
OUTBOARD PROFILE

FRAME SPACING 600mm THROUGHOUT



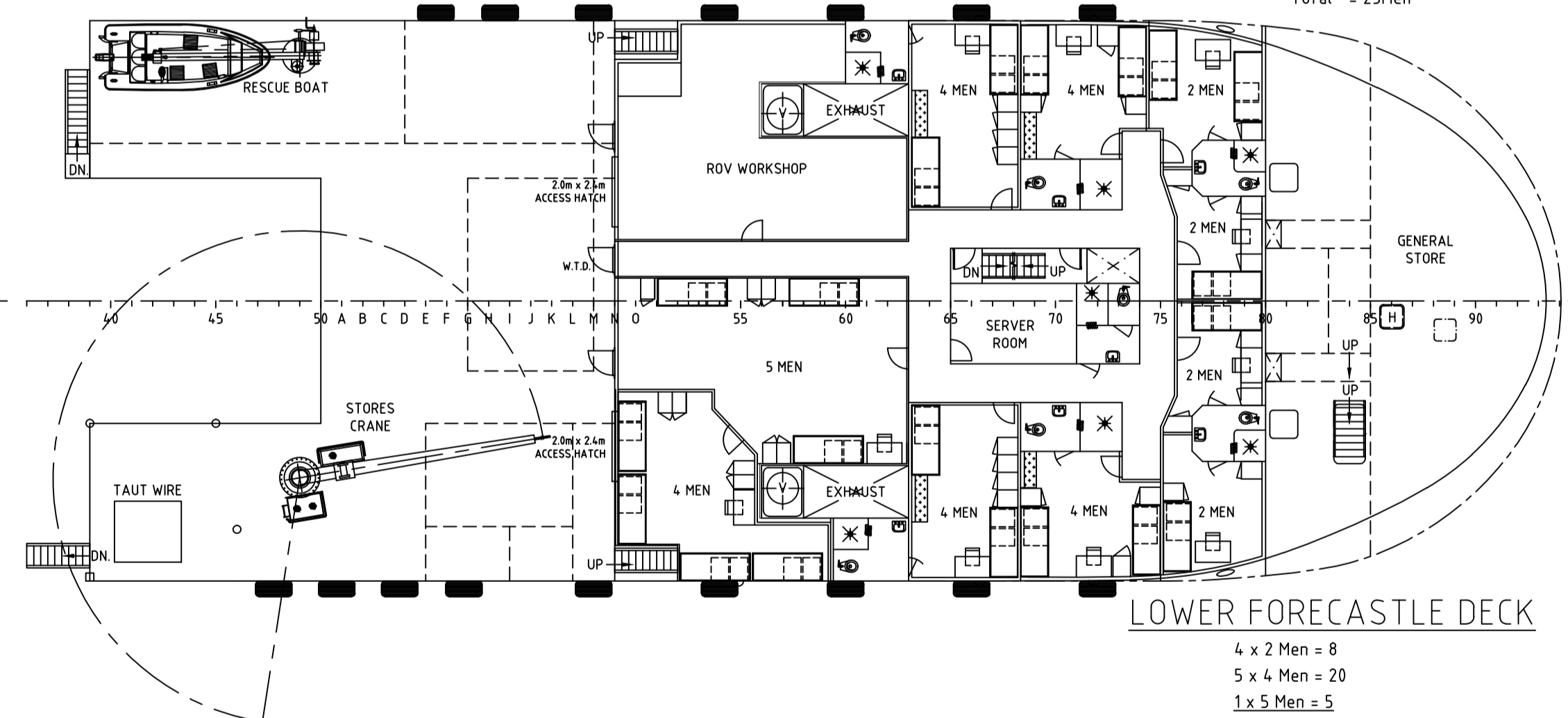
UPPER FORECASTLE DECK

2 x 1 Men = 2
8 x 2 Men = 16
1 x 5 Men = 5
Total = 23 Men



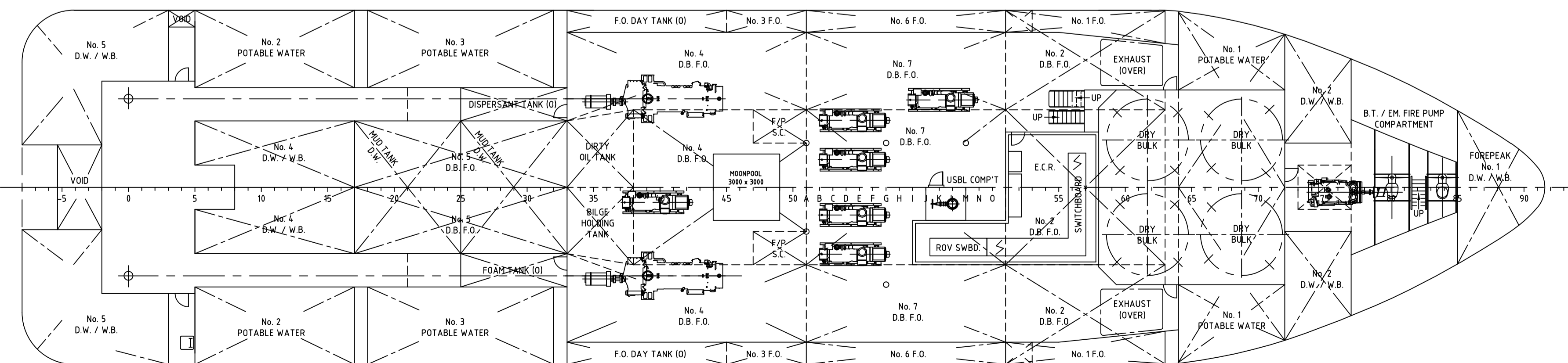
MAIN DECK

1 x 2 Men = 2
3 x 4 Men = 12
Total = 14 Men

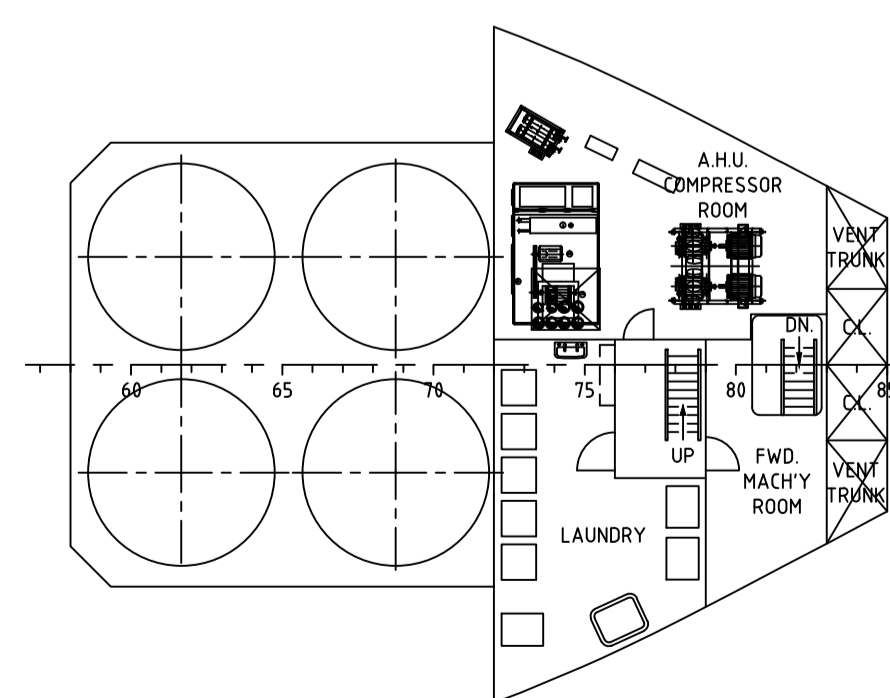


LOWER FORECASTLE DECK

4 x 2 Men = 8
5 x 4 Men = 20
1 x 5 Men = 5
Total = 33 Men



BELOW MAIN DECK



ACCOMMODATION TWEEN DECK

ASBUILT CREW ACCOMMODATION - OWNERS REQUEST	3	IJR	DCF / ET	14/02/16
DESCRIPTION	REV	DRN BY	CHK BY	DATE

CLIENT:
MICLYN EXPRESS OFFSHORE

TITLE: GENERAL ARRANGEMENT PLAN	
SHIP NAME: MICLYN ENTERPRISE	
CONTRACT NO.:	DRAWING NO.:
	MEO-MEOE-GAP-001
DRAWN:	REV NO.:
IJR	3
CHECKED:	SCALE:
DCF	1:100
APPROVED:	SHEET NO.:
ERIK TING	1 OF 1
DATE:	SIZE:
11-FEBRUARY-2016	A1



Main Office (Singapore):
No.3 Harbour Front Place #11-01/04 Harbour Front Tower 2
Singapore 099254
Tel: (65) 65454211 Fax: (65) 42754212
www.miclynexpressoffshore.com

This document contains Confidential, Proprietary information and shall not be Copied, Reproduced, Used, Transferred to other Documents or Disclosed to others for any purpose unless Authorized by MEO.