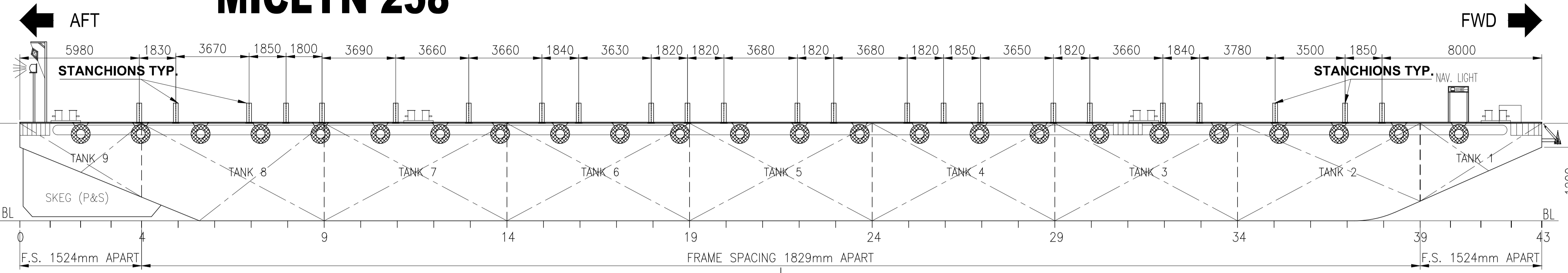
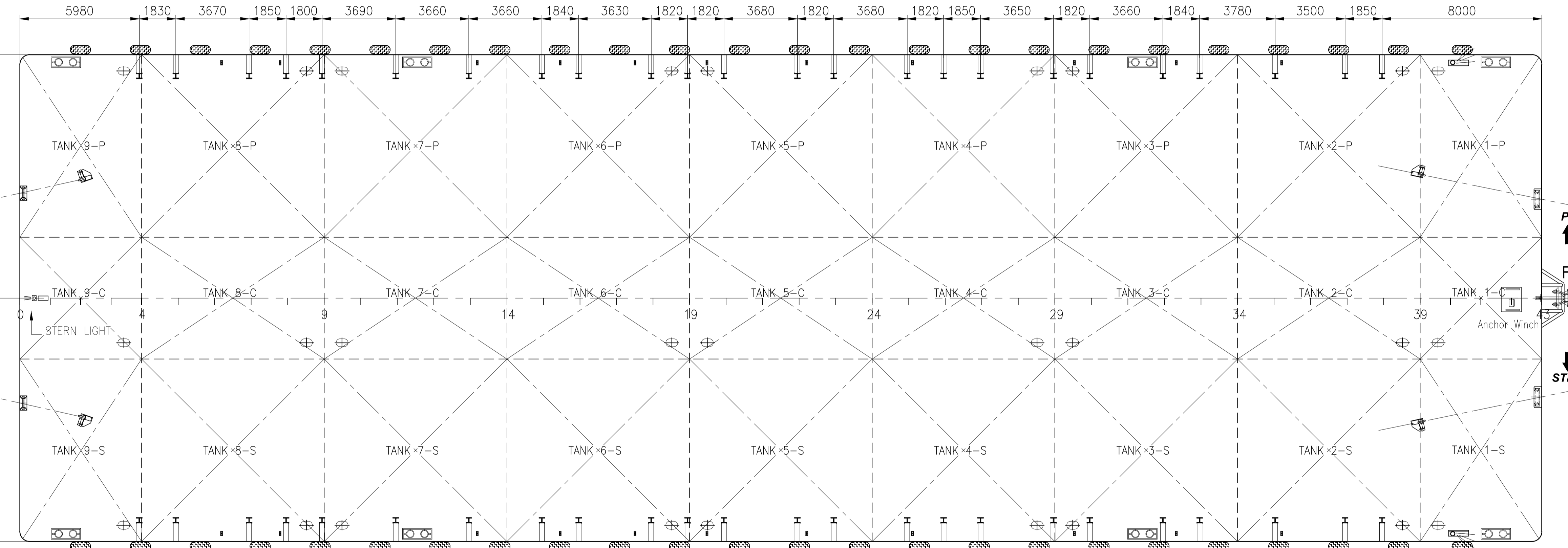


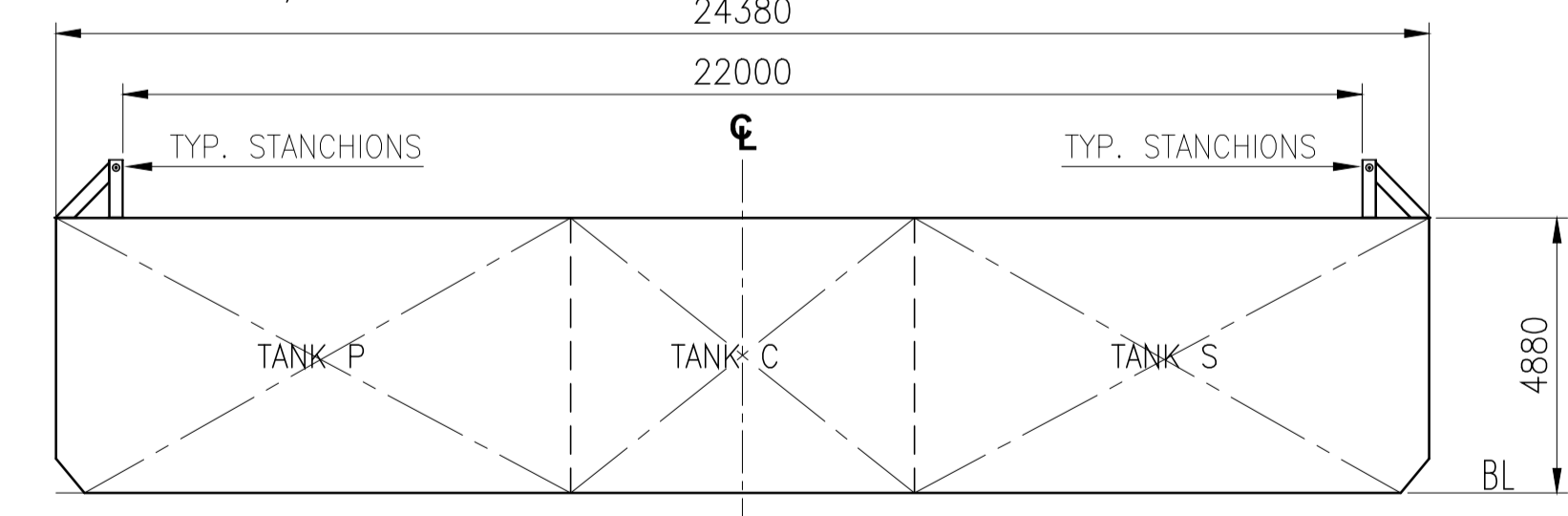
GENERAL ARRANGEMENT PLAN for " MICLYN 258 "



PROFILE VIEW
SCALE/ N.T.S



MAIN DECK PLAN
SCALE/ N.T.S



MIDSHIP SECTION
LKG. FWD / N.T.S

PRINCIPAL PARTICULARS

- LENGTH OVERALL - 76.20 M. (250'-00")
- BREADTH MLD. - 24.38 M. (80'-00")
- DEPTH MLD. - 4.88 M. (16'-00")
- DRAFT MLD. - 3.80 M. (12'-6")
- DECK LOAD - 15.00 TON/M2
- CLASS NOTATION: ABS + A1 TANK BARGE

NOTE :
1. ALL DIMENSIONS ARE IN MM UNLESS INDICATED OTHERWISE.
2. REFER TO " EXTERNAL TYP. STANCHION DETAIL ".
BY NANJING RUNQI SHIPBUILDING ENGINEERING COMPANY LTD.

DRAWING NO	REV	DRAWING TITLE	REV	DATE	DESCRIPTION	ORIGINATOR	REVIEWER	APPROVER	CLIENT
	2		26-05-16		UPDATED AS PER COMMENTS	JBI	RS	CT	-
	1		05-02-16		UPDATED AS PER CURRENT STANCHIONS LOCATION	JBI	RS	CT	-
	0		08-01-13		UPDATED AS FOR REFERENCE & RECORD ONLY	DF	KH	HH	-

CONTRACT NO. : -		DRAWN : JBI	
DFT. CHECKED : RS		ENGINEER :	
APPROVED : CT		DATE : 08-01-13	
SCALE [A3 SIZE] :		DATE :	

This Document Contains Confidential Proprietary Information And Shall Not Be Copied, Reproduced, Used, Transferred To Other Documents Or Disclosed To Others For Any Purpose Unless Authorized By EOS

Purchaser Review & Comments shall not be assumed to indicate either responsibility or liability for accuracy & completeness of this document or to alter any contractual terms and conditions.



3 HARBOURFRONT PLACE,
11-01/04 HARBOURFRONT TOWER 2,
SINGAPORE 099254
TEL: (65) 6545 6211
FAX: (65) 6275 6212

CONTRACT TITLE: Marine Transportation of Offshore Pipe Lines

TITLE: GENERAL ARRANGEMENT PLAN
BARGE - MICLYN 258

EOS DWG. NO. EOS-ENGG-010 SHT. 1 OF 1 REV. 2