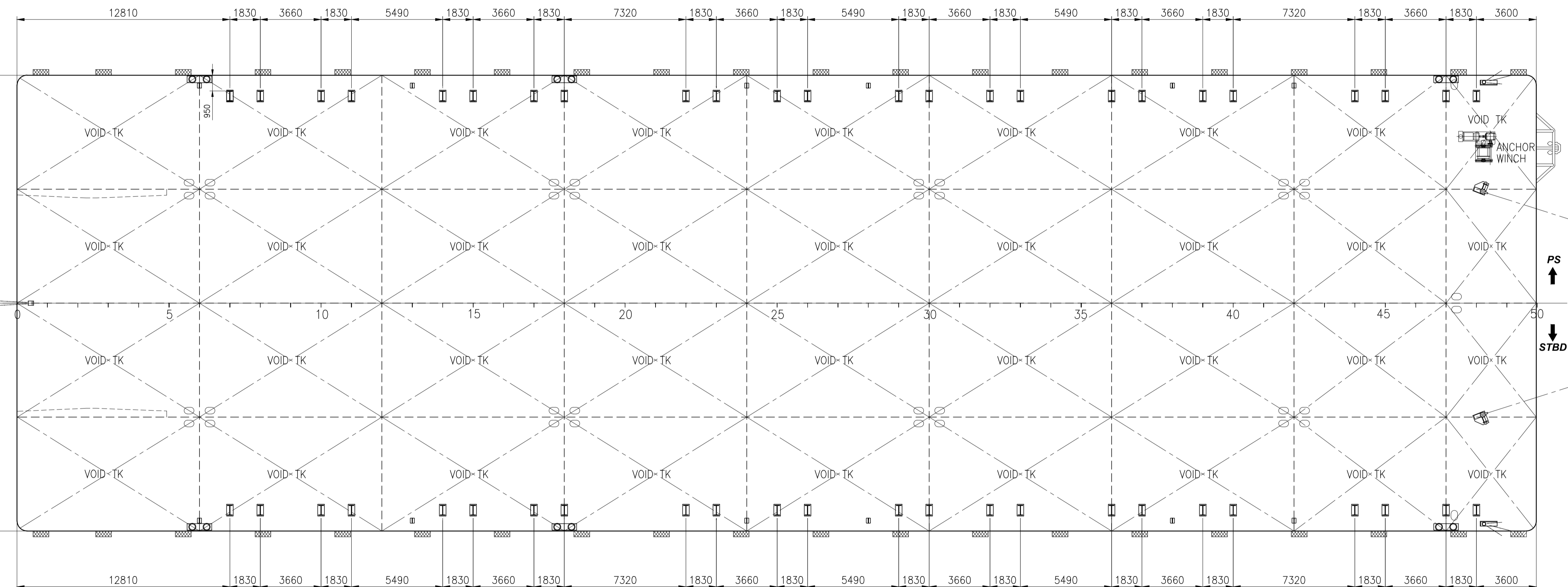
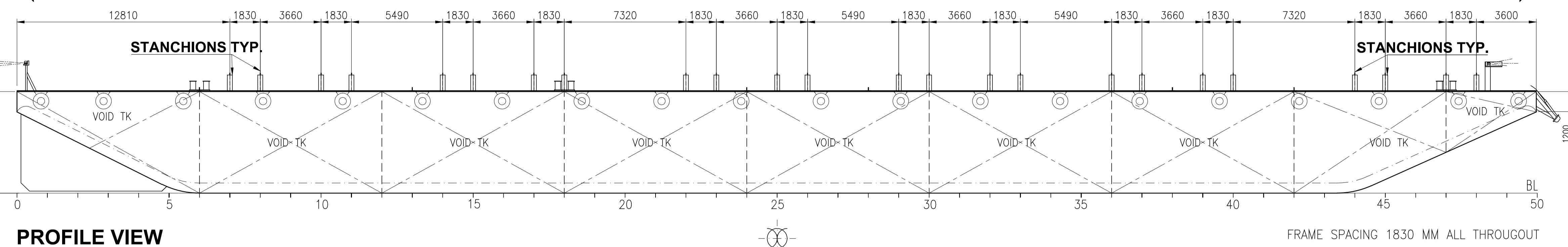
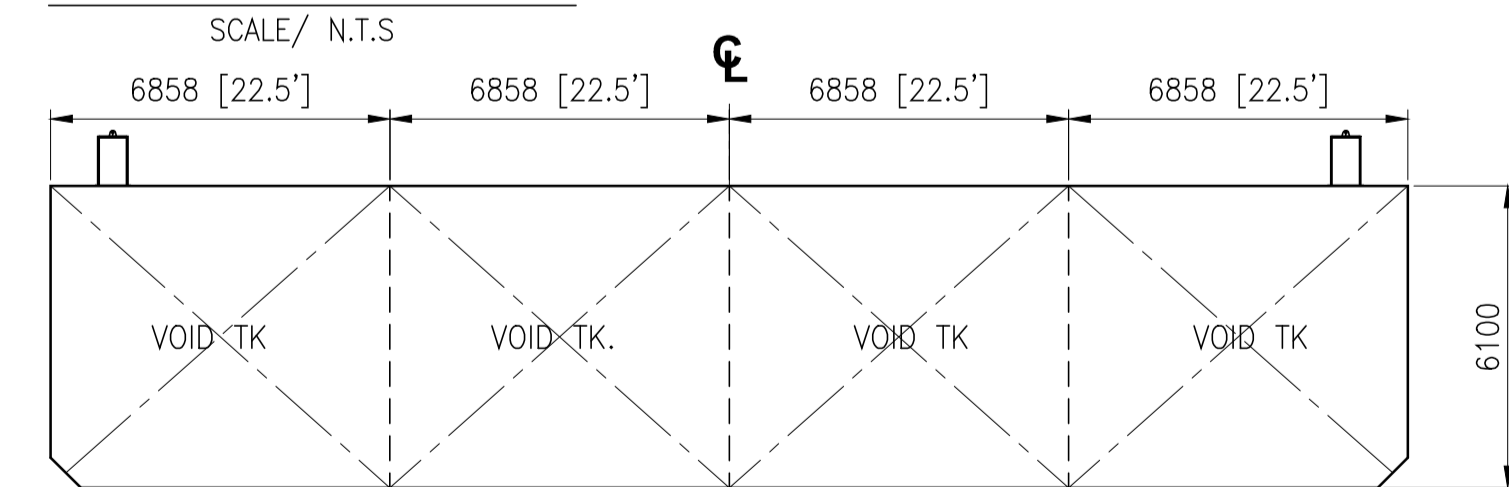


# GENERAL ARRANGEMENT PLAN for

## " MICLYN 305 "



### TRANSVERSE



### PRINCIPAL PARTICULARS

- LENGTH OVERALL - 91.440 M. (300'-00")
- BREADTH MLD. - 27.432 M. ( 90'-00")
- DEPTH MLD. - 6.100 M. ( 20'-00")
- DRAFT MLD. - 4.800 M. ( 15'-06")
- DECK LOAD - 15.000 TON/M2
- CLASS NOTATION: ABS + A1 TANK BARGE

- NOTE :
- ALL DIMENSIONS ARE IN MM UNLESS INDICATED OTHERWISE.
  - REFER TO " EXTERNAL TYP. STANCHION DETAIL (AS FITTED)".  
BY E.O.S - MIDDLE EAST, U.A.E

DRAWING NO	REV	DRAWING TITLE	REV	DATE	DESCRIPTION	ORIGINATOR	REVIEWER	APPROVER	CLIENT
	2		25-08-16		UPDATED AS PER AMENDED DECK STANCHIONS LOCATION	JB	RS	CT	-
	1		07-12-15		UPDATED AS PER RECENT STANCHIONS/ DECK PAD EYES	JB	RS	CT	-
	0		07-03-13		ISSUED FOR REFERENCE ONLY	JB	RS	CT	-

CONTRACT NO.	CONTRACT TITLE
-	Marine Transportation of Offshore Pipe Lines

DATE	APPROVED	DATE
07-03-15	CT	07-03-15

SCALE [ A3 SIZE ]	DATE
-	-



3 HARBOURFRONT PLACE,  
11-01/04 HARBOURFRONT TOWER 2,  
SINGAPORE 099254  
TEL: (65) 6545 6211  
FAX: (65) 6275 6212

CONTRACT TITLE: Marine Transportation of Offshore Pipe Lines

TITLE: GENERAL ARRANGEMENT PLAN  
BARGE - MICLYN 305

EOS DWG. NO. EOS-ENGG-021 SHT. 1 OF 1 REV. 2