



## EXPRESS 73

Fast Utility Craft/ Crewboat

### PRINCIPAL PARTICULARS

Year Built	2012
Place Built	Singapore
Design	Penguin Shipyard Int'l
Flag	Malaysia
Length Overall	38.00 m
Length BP	34.71 m
Breadth Moulded	7.60 m
Depth Moulded	3.65 m
Draft (max)	1.89 m
Freeboard (SLL)	1.41 m
Class	ABS
Notation	I +HULL +MACH, Crewboat, Unrestricted navigation, Max significant wave ht 3.0 m
GRT/ NRT	257.00 T / 77.00 T
Deadweight	125.96 T

### DECK PARTICULARS

Clear Deck Area	80.00 m <sup>2</sup>
Deck Carrying Load	55.00 T
Deck Strength	2.00 T/m <sup>2</sup>

### PERFORMANCE

Maximum Speed	27 Knots @ 16 T/24hrs
Economic Speed	25 Knots @ 14 T/24hrs

### PROPULSION SYSTEM

Main Engines	3 x Cummins KTA 38-M2, 1350 BHP, 1007 kW @ 1900RPM, Total 4050 BHP
Auxiliary Engines	3 x Cummins 6BT5.9-DM1, 80 kW @ 1500 RPM
Portable Generator	Denko KDE 3300
Emergency Generator	Nil
Bow Thruster	75 HMM-650, 0.9 T Thrust
Propellers	3 x Fixed Pitch Propellers
Steering Gear System	2 x NUFOSS Pump
Rudder	2 Units

### TANK CAPACITIES

Fuel Oil	65.34 m <sup>3</sup>
Fresh Water	30.31 m <sup>3</sup>

### CARGO DISCHARGE CAPACITIES

Fuel Oil Pump	23 m <sup>3</sup> /hr, TECO 7.5 HP, 5.5 kW
Fresh Water Pump	Marathon 5 KC39RN114GT 3/4 HP
Bilge	Nil

### DECK EQUIPMENT

Anchor Windlass c/w Bow	HYPAC, HHAW 15-32 415V, 4 kW
-------------------------	------------------------------



### ACCOMMODATION

Passenger Seats	90
Crew	2 x 1, 1 x 2, 1 x 4 = 8

### EXTERNAL FIRE-FIGHTING EQUIPMENT

Fi-Fi Notation	Equivalent to 1/4 Fi-Fi c/w Water Spray System
Fi-Fi Monitors	600 m <sup>3</sup> /h, 100 m Throw Length, FFS600LB
Fi-Fi Pump	600 m <sup>3</sup> /hr@100m, 250x350xP
Oil Dispersant System	Inductor, Proportion Pump, 200 L

### INTERNAL FIRE-FIGHTING & ANTI-POLLUTION EQUIPMENT

Emergency Fire Pump	YanMar YDP 20E, 30m <sup>3</sup> /hr @ 35 m head
CO2 Fi-Fi System	Fixed CO2 System for Engine Room
Fire Detection & Alarm	Apollo

### LIFE-SAVING EQUIPMENT

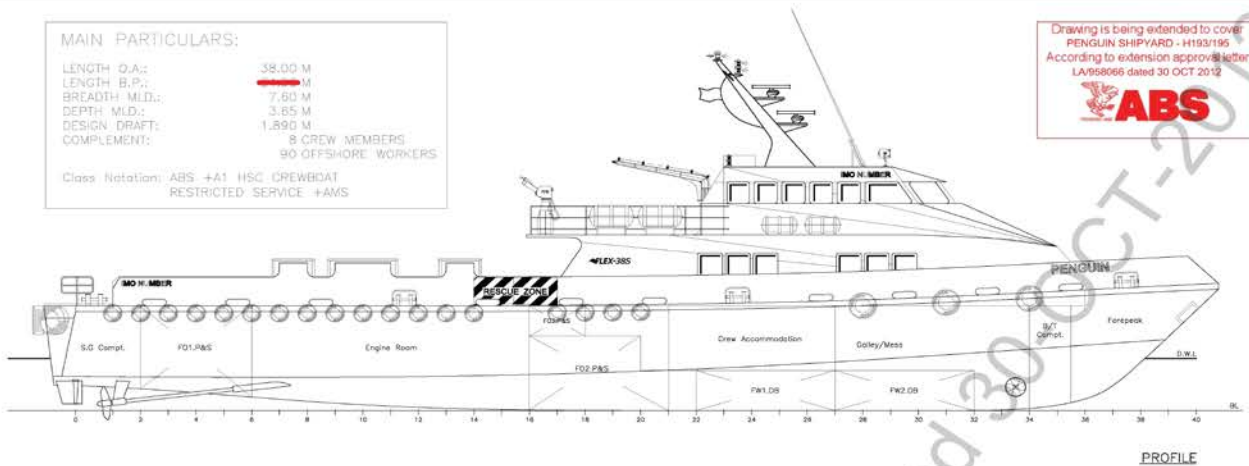
Life Rafts	4 x 10, 8 x 25 men
Rescue Boat c/w Davit	1 x 6 men, 25 HP, 20 L Fuel Cpty, SOLAS Compliant

**MAIN PARTICULARS:**

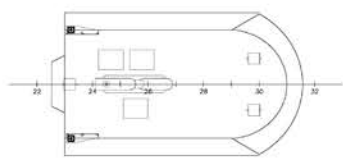
LENGTH O.A.: 39.00 M  
 LENGTH B.P.: 37.60 M  
 BREADTH MLD.: 7.60 M  
 DEPTH MLD.: 3.65 M  
 DESIGN DRAFT: 1.890 M  
 COMPLEMENT: 8 CREW MEMBERS  
 90 OFFSHORE WORKERS

Class Notation: ABS +A1 HSC CREWBAT  
 RESTRICTED SERVICE +AMS

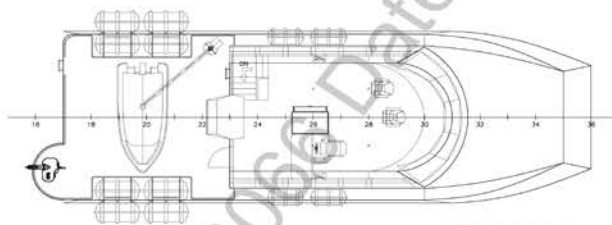
Drawing is being extended to cover  
 PENGUIN SHIPYARD - H193/195  
 According to extension approval letter  
 LA/958066 dated 30 OCT 2012



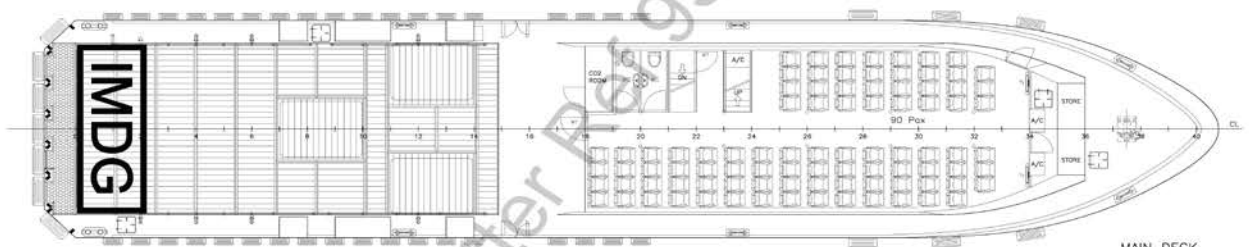
PROFILE



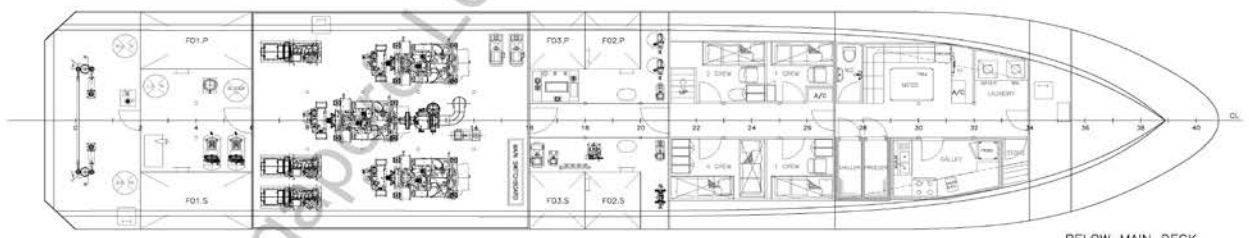
WHEELHOUSE TOP



WHEELHOUSE PLAN



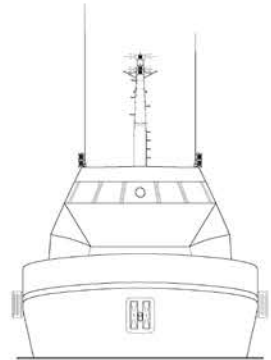
MAIN DECK



BELOW MAIN DECK



STERN VIEW



FRONT VIEW



- DOOR AT FR 34, BELOW MAIN DECK,  
 TO OPEN IN DIRECTION OF ESCAPE  
 - EFFICIENT MEANS OF DRAINAGE TO BE  
 PROVIDED FOR DECKHOUSE AT MAIN DECK.

PROJECT:	FLEX-3BS(H187-188)		
TITLE:	GENERAL ARRANGEMENT		
<b>PENGUIN SHIPYARD INTERNATIONAL PTE LTD</b> 18 Tuas Basin Link, Singapore 638794 Tel: 68628322 Fax: 68622150			
<small>This drawing and the information contained herein is supplied on the understanding that they are the exclusive property of Penguin Shipyard International Pte Ltd. They must not be used or reproduced in whole or in part, without permission in writing.</small>			
DRAWN:	ZH	DATE:	01,AUG,2011
CHECKED:	PATRICK	DATE:	08,AUG,2011
APPROVED:	PATRICK	DATE:	20,AUG,2011
DRAWING No:	PSI-H191-G-01	SIZE:	A1
		SCALE:	1:75
		REVISION:	A
		SHEET:	1 OF 1

