



EXPRESS 78

Fast Utility Craft/ Crewboat

PRINCIPAL PARTICULARS

Year Built	2013
Place Built	Indonesia, Batam
Design	Penguin Shipyard Int'l
Flag	Panama
Length Overall	38.00 m
Length BP	34.71 m
Breadth Moulded	7.60 m
Depth Moulded	3.65 m
Draft (max)	1.89 m
Freeboard (SLL)	1.41 m
Class	BV
Notation	I, Hull, Mach, Crewboat, Unrestricted Navigation, Max Significant Wave Ht < 3.0 m
GRT/ NRT	257.00 T / 77.00 T
Deadweight	123.00 T

DECK PARTICULARS

Clear Deck Area	80.00 m ²
Deck Carrying Load	55.00 T
Deck Strength	2.00 T/m ²

PERFORMANCE

Maximum Speed	27 Knots @ 16 T/24 Hrs @ 35 DWT
Economic Speed	25 Knots @ 14 MT/24 Hrs @ 35 DWT

PROPULSION SYSTEM

Main Engines	3 x Cummins KTA 38-M2, 1350 BHP, Total 4050 BHP
Auxiliary Engines	3 x Cummins 6BT5.9-DM1, 80 kW @ 1500 RPM
Portable Generator	Denko KDE 3300
Emergency Generator	Nil
Bow Thruster	75 HMM-650, 0.9 T Thrust
Propellers	3 x Fixed Pitch Propellers, 5-blade
Steering Gear System	Duplex Electro Hydraulic Pump
Rudder	2 Units

TANK CAPACITIES

Fuel Oil	68.77 m ³
Fresh Water	30.92 m ³

CARGO DISCHARGE CAPACITIES

Fuel Oil Pump	23 m ³ /hr, TECO 7.5 HP 5.5kW
Fresh Water Pump	Marathon 5 KC39RN114GT 3/4hp
Bilge	Nil

DECK EQUIPMENT

Anchor Windlass c/w Bow	Hypac Electro Hydraulic Winch c/w Wire Rope, Chain & Single Anchor
-------------------------	--



ACCOMMODATION

Passenger Seats	90
Crew	1 x 1, 1 x 3, 3 x 2 = 10

EXTERNAL FIRE-FIGHTING EQUIPMENT

Fi-Fi Notation	Equivalent to 1/4 Fi-Fi c/w Water Spray System
Fi-Fi Monitors	600 m ³ /h, 100 m Throw Length
Fi-Fi Pump	600 m ³ /hr @ 100m, 250x350xP
Oil Dispersant System	Inductor, Proportional Pump, 200 L

INTERNAL FIRE-FIGHTING & ANTI-POLLUTION EQUIPMENT

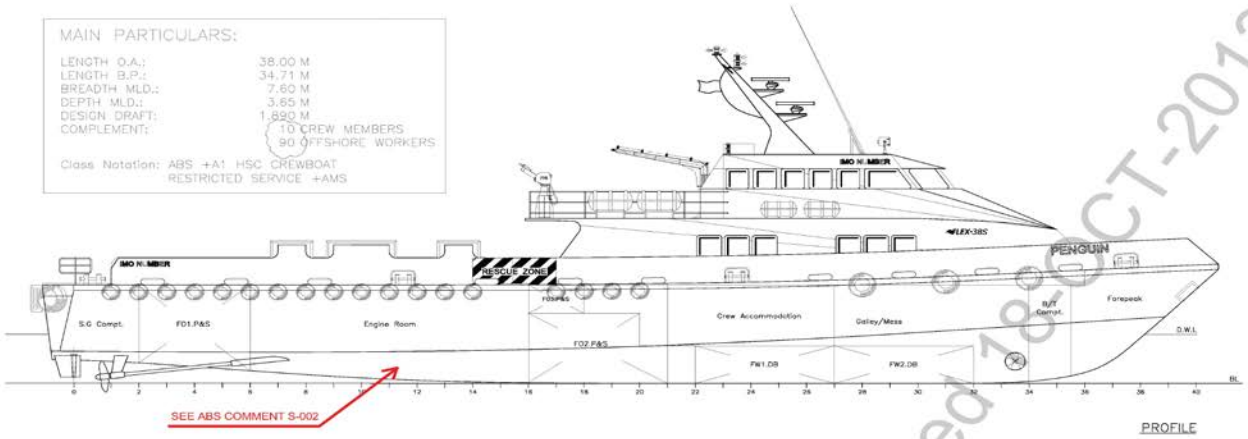
Emergency Fire Pump	YanMar YDP 20E, 30 m ³ /hr @ 35m head
CO2 Fi-Fi System	Fixed CO2 System for Engine Room
Fire Detection & Alarm	Apollo

LIFE-SAVING EQUIPMENT

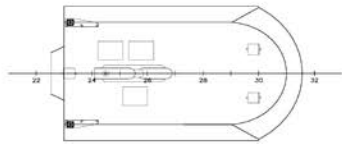
Life Rafts	1 x 6 men inflatable Non-SOLAS workboat c/w 28
Rescue Boat c/w Davit	1 x 6 men, 25 HP, 20 L Fuel Capacity, SOLAS Compliant

MAIN PARTICULARS:

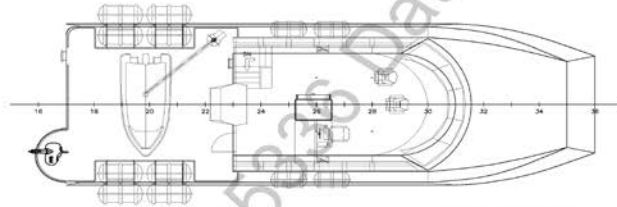
LENGTH O.A.: 38.00 M
 LENGTH B.P.: 34.71 M
 BREADTH MLD.: 7.60 M
 DEPTH MLD.: 3.65 M
 DESIGN DRAFT: 1.850 M
 COMPLEMENT: 70 CREW MEMBERS
 90 OFFSHORE WORKERS
 Class Notation: ABS +A1 HSC CREWBOAT
 RESTRICTED SERVICE +AMS



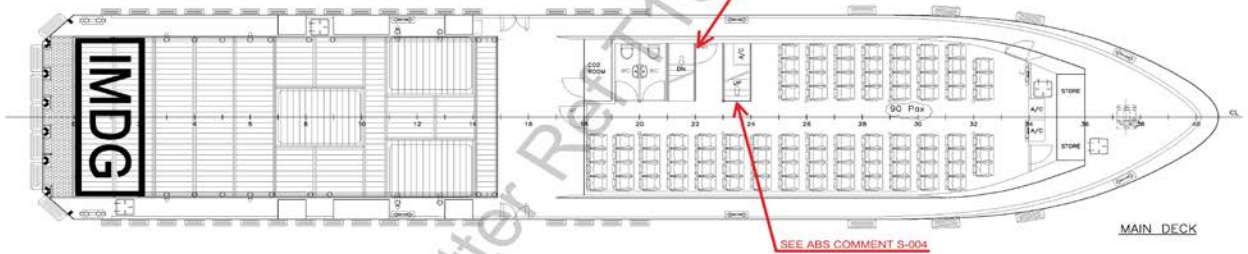
PROFILE



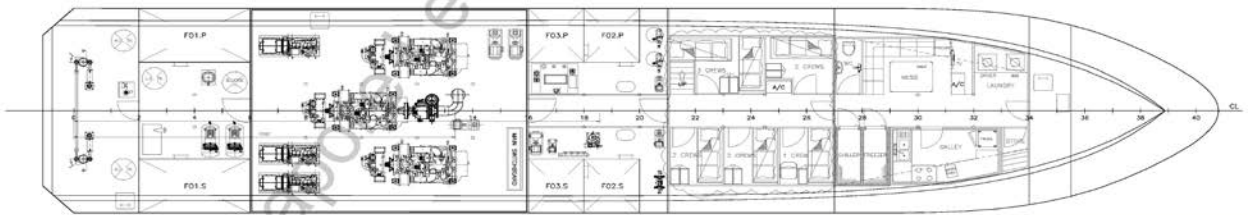
WHEELHOUSE TOP



WHEELHOUSE PLAN



MAIN DECK



BELOW MAIN DECK

- DOOR AT FR 34, BELOW MAIN DECK TO OPEN IN DIRECTION OF ESCAPE
 - EFFICIENT MEANS OF DRAINAGE TO BR PROVIDED FOR DECKHOUSE AT MAIN DECK.

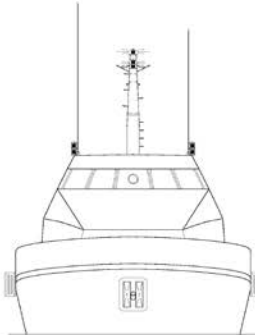
REVIEWED
 Details of this review
 are as indicated in the
 ABS Letter

AS AMENDED
 No. pages:

SEE ABS LETTER FOR COMMENTS



STERN VIEW



FRONT VIEW

PROJECT:	FLEX-385(H221-222)		
TITLE:	GENERAL ARRANGEMENT		
PENGUIN SHIPYARD INTERNATIONAL PTE LTD 18 Tuas Basin Link, Singapore 630784 Tel: 68628322 Fax: 68622150			
<small>This drawing and the information contained herein is supplied on the understanding that they are the exclusive property of Penguin Shipyard International Pte Ltd. They must not be used or reproduced in whole or in part, without permission in writing.</small>			
DRAWN:	ZH	DATE:	01.AUG.2011
CHECKED:	PATRICK	DATE:	08.AUG.2011
APPROVED:	PATRICK	DATE:	20.AUG.2011
DRAWING No.:	PSI-H191-G-01	SCALE:	1:75
		REVISION:	A
		SHEET:	1 OF 1