



EXPRESS 85

Fast Utility Craft/ Crewboat

PRINCIPAL PARTICULARS

Year Built	2014
Place Built	Indonesia, Batam
Design	Flex 38-S, Penguin Shipyard Int'l
Flag	Malaysia
Length Overall	38.00 m
Length BP	34.71 m
Breadth Moulded	7.60 m
Depth Moulded	3.65 m
Draft (max)	1.89 m
Freeboard (SLL)	1.41 m
Class	BV
Notation	I, HULL, MACH, Crew Boat, Unrestricted Navigation, Max Significant Wave Ht < 3.0 m
GRT/ NRT	256.00 T / 77.00 T
Deadweight	123.30 T

DECK PARTICULARS

Clear Deck Area	80.00 m ²
Deck Carrying Load	55.00 T
Deck Strength	2.00 T/m ²

PERFORMANCE

Maximum Speed	27 Knots @ 16 T/24 Hrs @ 35 DWT
Economic Speed	25 Knots @ 14 MT/24 Hrs @ 35 DWT

PROPULSION SYSTEM

Main Engines	3 x Cummins KTA38-M2, 1350 BHP, 1007 kW @ 1900 RPM, Total 4050 BHP
Auxiliary Engines	3 x Cummins 6BT5.9-D(M), 80kw @ 1500 RPM
Portable Generator	Denko KDE3300E, 3.6 kW
Bow Thruster	Fluidmechanica HMH-650, 0.9 T Thrust
Propellers	3 x Fixed Pitch Propellers, 5-blade, Mencast
Steering Gear System	2 x Electro Hydraulic Ram
Rudder	2 x Balanced Rudder

TANK CAPACITIES

Fuel Oil	65.34 m ³ @ 95% fill
Fresh Water	29.38 m ³ @ 95% fill

CARGO DISCHARGE CAPACITIES

Fuel Oil Pump	23.00 m ³ /hr
Fresh Water Pump	Nil
Bilge	30.00 m ³ /hr

DECK EQUIPMENT

Anchor Windlass c/w Bow	Hypac Electro Hydraulic Winch c/w Wire Rope, Chain & Single Anchor
Crane	Nil



ACCOMMODATION

Passenger Seats	90
Crew	1 x 1, 1 x 3, 3 x 2 = 10

EXTERNAL FIRE-FIGHTING EQUIPMENT

Fi-Fi Notation	Equivalent to 1/4 Fi-Fi system c/w Water Spray
Fi-Fi Monitors	600 m ³ /h, 100 m head
Fi-Fi Pump	600 m ³ /hr
Oil Dispersant System	1V-jet Nozzles (P & S), 200 L Dispersant Tank

INTERNAL FIRE-FIGHTING & ANTI-POLLUTION EQUIPMENT

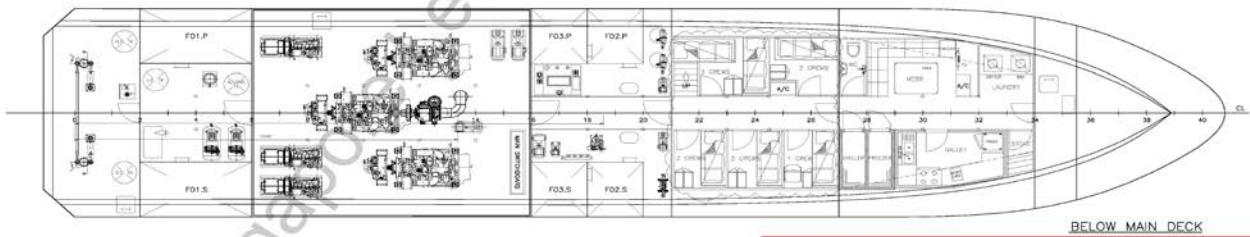
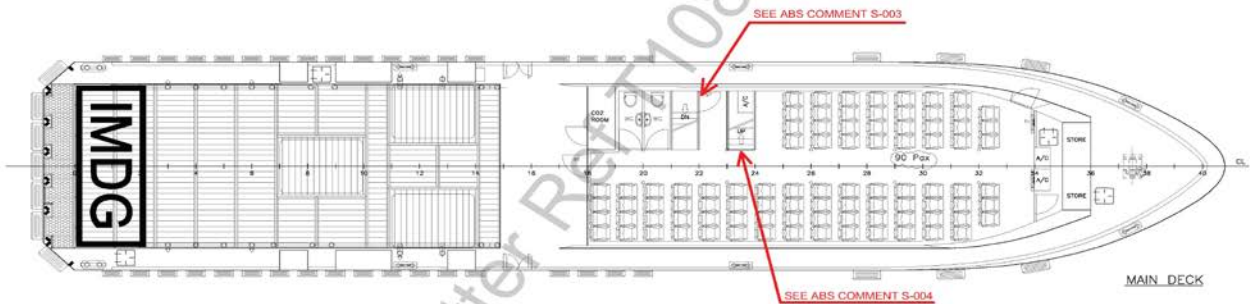
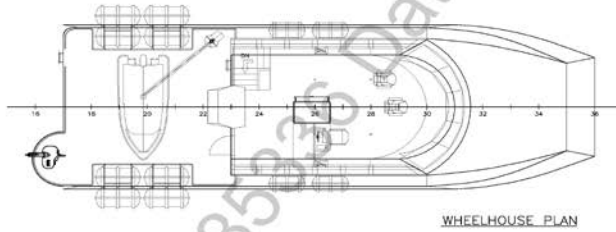
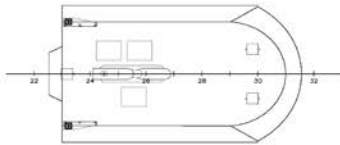
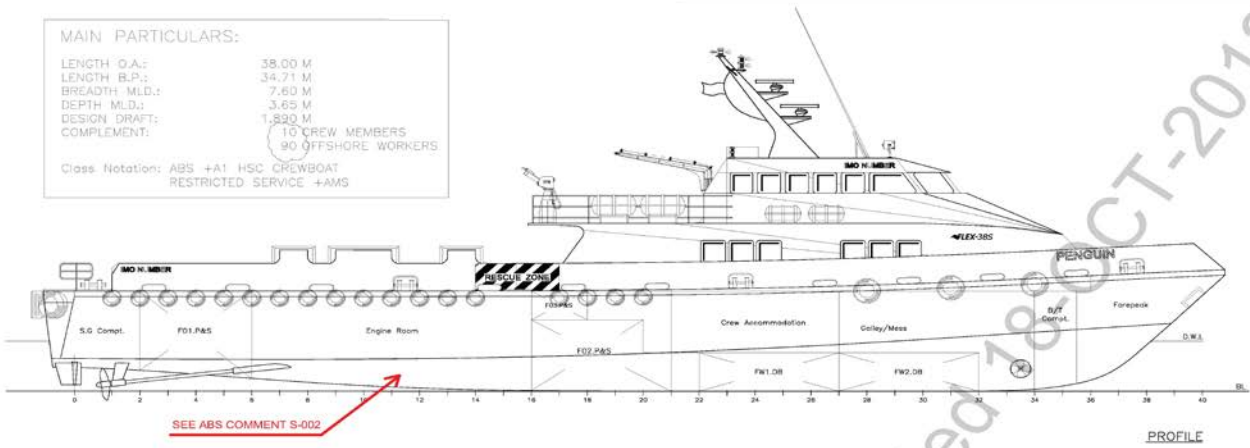
Emergency Fire Pump	Matsuka / Yanmar, 30 m ³ / hr @ 35 m head
CO2 Fi-Fi System	1 Nos
Fire Detection & Alarm	Tyco Minvera, T2000CV

LIFE-SAVING EQUIPMENT

Life Rafts	10 x 25 men, SOLAS Compliant
Rescue Boat c/w Davit	1 x 6 men, 25 HP outboard engine, Non-SOLAS Compliant

MAIN PARTICULARS:

LENGTH O.A.: 38.00 M
 LENGTH B.P.: 34.71 M
 BREADTH MLD.: 7.60 M
 DEPTH MLD.: 3.65 M
 DESIGN DRAFT: 1.800 M
 COMPLEMENT: 10 CREW MEMBERS
 90 OFFSHORE WORKERS
 Class Notation: ABS +A1 HSC CREWBOAT
 RESTRICTED SERVICE +AMS



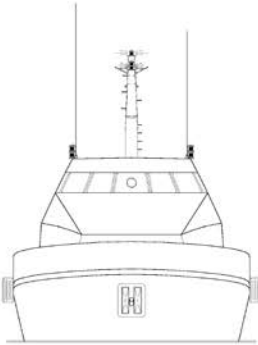
- DOOR AT FR.34, BELOW MAIN DECK, TO OPEN IN DIRECTION OF ESCAPE.
 - EFFICIENT MEANS OF DRAINAGE TO BR PROVIDED FOR DECKHOUSE AT MAIN DECK.

REVIEWED
 Details of this review are as indicated in the ABS Letter

AS AMENDED
 in light of _____



SEE ABS LETTER FOR COMMENTS



PROJECT:	FLEX-39S(H221-222)		
TITLE:	GENERAL ARRANGEMENT		
PENGUIN SHIPYARD INTERNATIONAL PTE LTD 18 Tuas South Link, Singapore 630794 Tel: 68628322 Fax: 68622150 <small>This drawing and the information contained herein is supplied on the understanding that they are the exclusive property of Penguin Shipyard International Pte Ltd. They must not be used or reproduced in whole or in part, without permission in writing.</small>			
DRAWN:	ZH	DATE:	01.AUG.2011
CHECKED:	PATRICK	DATE:	08.AUG.2011
APPROVED:	PATRICK	DATE:	20.AUG.2011
DRAWING No.:	PSI-H191-G-01	SCALE:	1:75
		REVISION:	A
		SHEET:	1 OF 1