

AOS PATTAYA

Azimuth Stern Drive Tug

PRINCIPAL PARTICULARS

Year Built	2006
Place Built	Unithai Shipyard, Thailand
Design	AHTS/Multi Offshore Terminal Tug
Flag	Panama
Length Overall	45.64 m
Length BP	42.38 m
Breadth Moulded	13.20 m
Depth Moulded	6.00 m
Draft (max)	5.30 m
Freeboard (SLL)	0.70 m
Class	BV
Notation	I x Hull x Mach, Tug, Fire Fighting Ship 1 - Water Spraying, Unrestricted Navigation, INWATERSURVEY
GRT/ NRT	818.00 T / 245.00 T
Deadweight	680.97 T
Bollard Pull	65.00 T

DECK PARTICULARS

Clear Deck Area	192.00 m ²
Deck Carrying Load	250.00 T
Deck Strength	5.00 T/m ²

PERFORMANCE

Maximum Speed	13 Knots @ 10 T/24 hrs
Economic Speed	9 Knots @ 8 T/24 hrs

PROPULSION SYSTEM

Main Engines	2 x Niigata 6L28HX, 2497 BHP, 1838 kW @ 750 RPM, Total 4994 BHP
Auxiliary Engines	2 x Caterpillar 3408, 280 kW @ 1500 RPM
Emergency Generator	Caterpillar 3056, 84 kW
Air Compressor	2 x Tanabe LHC-33
Bow Thruster	Schottel Electric Driven
Propellers	2 x Niigata Azimuth Fixed Pitch Z-Peller ZP-41
Steering Gear System	2 x Azimuth Stern Drive

TANK CAPACITIES

Fuel Oil	369.93 m ³
Fresh Water	102.40 m ³
Bilge	5.45 m ³
Ballast Water	264.44 m ³

CARGO DISCHARGE CAPACITIES

Fuel Oil Pump	35 m ³ /hr @ 40 m head
Fresh Water Pump	45 m ³ /hr @ 50 m head
Drill Water Pump	45 m ³ /hr @ 50 m head
Bilge Pump	45 m ³ /hr @ 50 m head



DECK EQUIPMENT

Anchors & Chain	Gypsy Pull 5 T x 12 m/min, 2 x 6 Shackles, Anchor Chain 28 mm (Dia)
Tugger Winch	150 m x 22 mm (Max 6 Layers), 5 T x 15 m/min, Brake Holding 7.5 T (Static)
Capstan	5 T x 12 m/min, Hydraulic Vertical Capstan
Anchor Windlass c/w Bow	1 x ME, Drum Capacity 300 m x 52 mm dia SWR (10 Layers), Pull 30 T x 10 m/min (Low Speed), 5 T x 30 m/min (High Speed), 45 m/min (Slack Speed) Brake Holding 155 T (Static 1st Layer)
Crane 1	SWL 5 T @ 12 m Radius (max SWL)
Crane 2	SWL 2.05 T, Provision Crane

ANCHOR HANDLING & TOWING EQUIPMENT

Anchor Handling/ Towing Winch	ME 75THAHTW Double Drums in Waterfall
AH Drum Capacity	52 mm (L) x 200 m (Dia) SWR, Lower Drum
Tow Drum Capacity	52 mm (L) x 600 m (Dia) SWR, 10 Layers Upper Drum
Spare Reel Drum Capacity	52 mm (L) x 300 m (Dia) SWR, 10 Layers
Line Pull @ First Layer	75 T x 5 m/min, Low Speed
Brake Holding	155 T (Static)
Towing Pin	200 T
Shark Jaw	200 T
Stern Roller	125 T
Fairlead	Nil
Bow Winch	Single Drum, Double Gypsies & Warping Ends
Fwd Tow Winch	300 m x 52 mm SWR (10 Layers), Pull 30 T x 10 m/min (1st Layer Low Speed), Pull 5 T x 30 m/min (1st Layer High Speed), Brake Holding 155 T
Aft Tow Winch	600 m x 52 mm SWR (10 Layers), Pull 75 T x 5 m/min (1st Layer Low Speed), Pull 15 T x 30 m/min (1st Layer High Speed), Brake Holding 155 T

ACCOMMODATION

Berths	2x2, 4x1, 1x2 Berths
Total Pax	10

EXTERNAL FIRE-FIGHTING EQUIPMENT

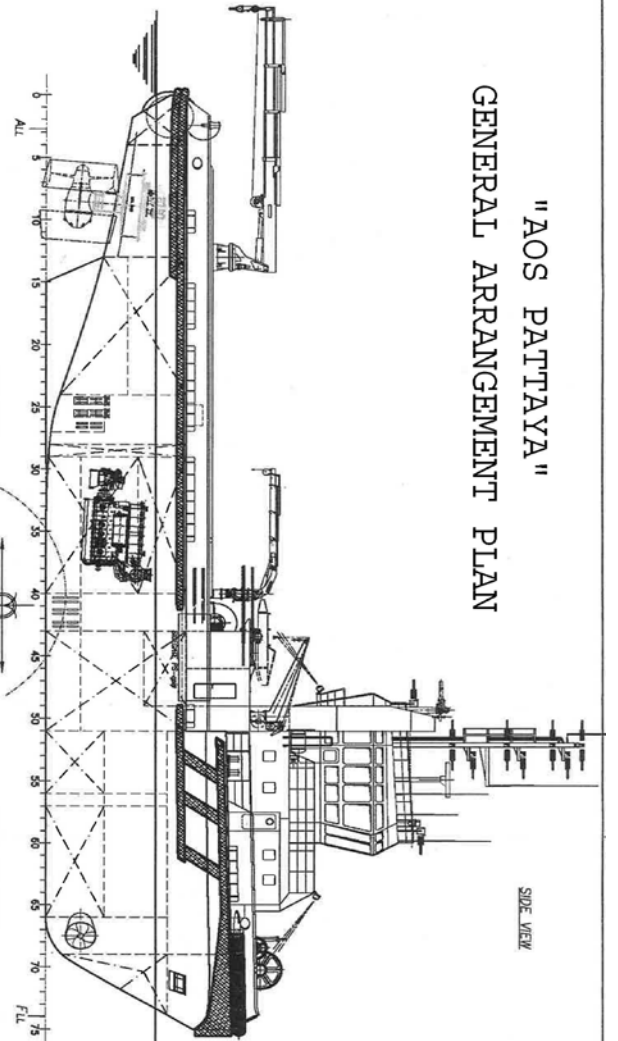
Fi-Fi Notation	FFS PI-100 for 0.3% Mix Ration/Up To 770 L/min
Fi-Fi Monitors	2 x 140 m Throw Length
Fi-Fi Pump	2 x 1200 m ³ /hr

LIFE-SAVING EQUIPMENT

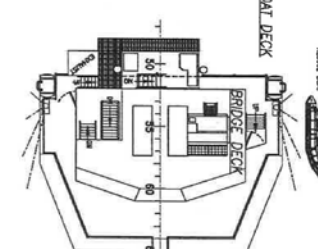
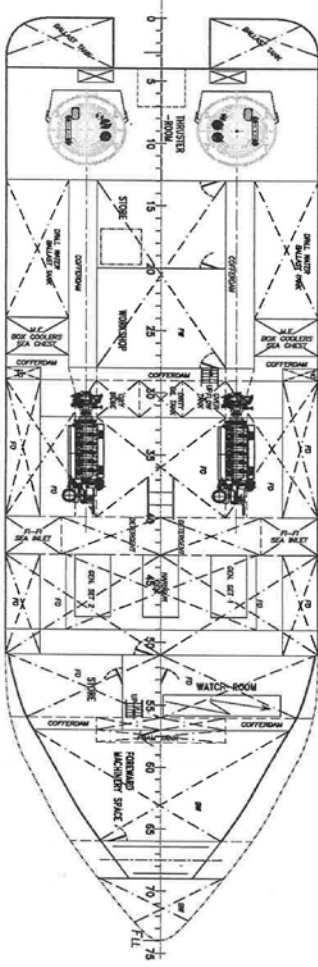
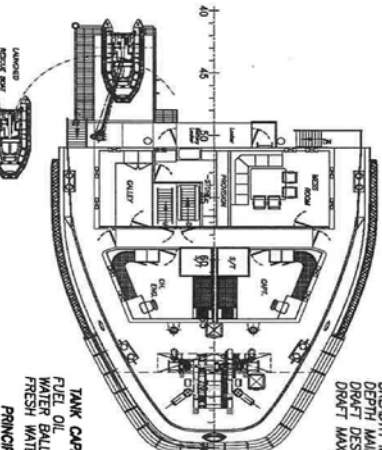
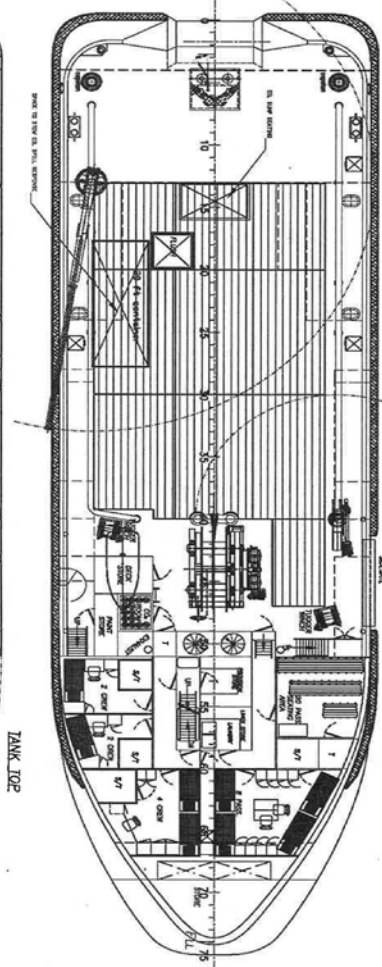
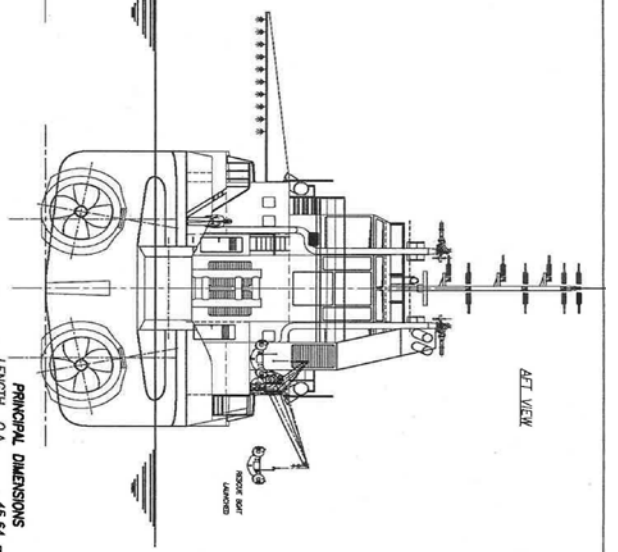
Life Rafts	4 x 20 Men, SOLAS Compliant
Rescue Boat c/w Davit	1 x 6 Men, 40 HP of Outboard Eng, 20 L

"AOS PATTAYA" GENERAL ARRANGEMENT PLAN

SIDE VIEW



AFT VIEW



PRINCIPAL DIMENSIONS
 LENGTH O/A 43.64 mtr.
 LENGTH O/D 43.26 mtr.
 BREADTH MID 13.26 mtr.
 DEPTH MAINDECK 6.00 mtr.
 DRAFT DESIGN 4.80 mtr.
 DRAFT MAX/SCANTLING 5.30 mtr.

TANK CAPACITIES approx.
 FUEL OIL 375 cub.mtr.
 WATER BALLAST 138 cub.mtr.
 FRESH WATER 102 cub.mtr.

PRINCIPAL PARAMETERS
 SPEED 13 kn ahead
 BOLLARD PULL 65 ton
 FRAMESPACING 600 mm.

NO	DESCRIPTION	Checked	Approved	Scale	DATE
1	CURT TAIL TANK				
2	NO. 1 FUEL TANK				
3	NO. 2 FUEL TANK				
4	NO. 3 FUEL TANK				
5	NO. 4 FUEL TANK				
6	NO. 5 FUEL TANK				
7	NO. 6 FUEL TANK				
8	NO. 7 FUEL TANK				
9	NO. 8 FUEL TANK				
10	NO. 9 FUEL TANK				
11	NO. 10 FUEL TANK				
12	NO. 11 FUEL TANK				
13	NO. 12 FUEL TANK				
14	NO. 13 FUEL TANK				
15	NO. 14 FUEL TANK				
16	NO. 15 FUEL TANK				
17	NO. 16 FUEL TANK				
18	NO. 17 FUEL TANK				
19	NO. 18 FUEL TANK				
20	NO. 19 FUEL TANK				
21	NO. 20 FUEL TANK				
22	NO. 21 FUEL TANK				
23	NO. 22 FUEL TANK				
24	NO. 23 FUEL TANK				
25	NO. 24 FUEL TANK				
26	NO. 25 FUEL TANK				
27	NO. 26 FUEL TANK				
28	NO. 27 FUEL TANK				
29	NO. 28 FUEL TANK				
30	NO. 29 FUEL TANK				
31	NO. 30 FUEL TANK				
32	NO. 31 FUEL TANK				
33	NO. 32 FUEL TANK				
34	NO. 33 FUEL TANK				
35	NO. 34 FUEL TANK				
36	NO. 35 FUEL TANK				
37	NO. 36 FUEL TANK				
38	NO. 37 FUEL TANK				
39	NO. 38 FUEL TANK				
40	NO. 39 FUEL TANK				
41	NO. 40 FUEL TANK				
42	NO. 41 FUEL TANK				
43	NO. 42 FUEL TANK				
44	NO. 43 FUEL TANK				
45	NO. 44 FUEL TANK				
46	NO. 45 FUEL TANK				
47	NO. 46 FUEL TANK				
48	NO. 47 FUEL TANK				
49	NO. 48 FUEL TANK				
50	NO. 49 FUEL TANK				
51	NO. 50 FUEL TANK				
52	NO. 51 FUEL TANK				
53	NO. 52 FUEL TANK				
54	NO. 53 FUEL TANK				
55	NO. 54 FUEL TANK				
56	NO. 55 FUEL TANK				
57	NO. 56 FUEL TANK				
58	NO. 57 FUEL TANK				
59	NO. 58 FUEL TANK				
60	NO. 59 FUEL TANK				
61	NO. 60 FUEL TANK				
62	NO. 61 FUEL TANK				
63	NO. 62 FUEL TANK				
64	NO. 63 FUEL TANK				
65	NO. 64 FUEL TANK				
66	NO. 65 FUEL TANK				
67	NO. 66 FUEL TANK				
68	NO. 67 FUEL TANK				
69	NO. 68 FUEL TANK				
70	NO. 69 FUEL TANK				
71	NO. 70 FUEL TANK				
72	NO. 71 FUEL TANK				
73	NO. 72 FUEL TANK				
74	NO. 73 FUEL TANK				
75	NO. 74 FUEL TANK				
76	NO. 75 FUEL TANK				
77	NO. 76 FUEL TANK				
78	NO. 77 FUEL TANK				
79	NO. 78 FUEL TANK				
80	NO. 79 FUEL TANK				
81	NO. 80 FUEL TANK				
82	NO. 81 FUEL TANK				
83	NO. 82 FUEL TANK				
84	NO. 83 FUEL TANK				
85	NO. 84 FUEL TANK				
86	NO. 85 FUEL TANK				
87	NO. 86 FUEL TANK				
88	NO. 87 FUEL TANK				
89	NO. 88 FUEL TANK				
90	NO. 89 FUEL TANK				
91	NO. 90 FUEL TANK				
92	NO. 91 FUEL TANK				
93	NO. 92 FUEL TANK				
94	NO. 93 FUEL TANK				
95	NO. 94 FUEL TANK				
96	NO. 95 FUEL TANK				
97	NO. 96 FUEL TANK				
98	NO. 97 FUEL TANK				
99	NO. 98 FUEL TANK				
100	NO. 99 FUEL TANK				
101	NO. 100 FUEL TANK				

65 ton B.Pull - 45mtr MOTT

GENERAL ARRANGEMENT

WORLDWIDE MARINE ENGINEERING B.V.
 IJMUUDEN - HOLLAND