



AOS PHUKET

SUPPLY SHIP

PRINCIPAL PARTICULARS

Year Built	2006
Place Built	Guangzhou Panyu Lingshan
Design	Utility Tug
Flag	Panama
Length Overall	45.00m
Length BP	42.75m
Breadth Moulded	11.00m
Depth Moulded	4.00m
Draft (max)	3.41m
Freeboard (SLL)	0.60m
Class	BV
Notation	I x Hull x Mach, Tug, Unrestricted Navigation
GRT/ NRT	499.00 T / 149.00 T
Deadweight	528.05 T
Bollard Pull	37.00 T

DECK PARTICULARS

Clear Deck Area	166.00 m ²
Deck Carrying Load	116.85 T
Deck Strength	5.00 T/m ²

PERFORMANCE

Maximum Speed	12 Knots @ 13 T/24hrs
Economic Speed	7 Knots @ 7 T/24hrs

PROPULSION SYSTEM

Main Engines	2 x Caterpillar 3512B, 1750 BHP, 1305kW @ 1600 RPM, Total 3500 BHP
Auxiliary Engines	2 x Caterpillar 3406C, 229 kW @ 1500 RPM
Air Compressor	Nil
Bow Thruster	HRP 2001 TT, 3 T Thrust
Propellers	2 x Fixed Pitch Propellers with Kort Nozzles
Steering Gear System	2 x Electro-Hydraulic Steering Gear PEH3002-2P
Rudder	2 Units

TANK CAPACITIES

Fuel Oil	277.90 m ³
Fresh Water	154.50 m ³
Bilge	4.40 m ³
Ballast Water	87.40 m ³

CARGO DISCHARGE CAPACITIES

Fuel Oil Pump	75 m ³ /hr, Pressure 6 bar
Fresh Water Pump	75 m ³ /hr, Pressure 6 bar
Drill Water Pump	Nil
Bilge Pump	50 m ³ /hr



DECK EQUIPMENT

Anchors & Chain	2 x 900 kg, Chain 357.5 m
Tugger Winch	2 x Marine Equipment Single Drum 5 T @ 15 m/min @ 1st Layer, 2 x 100 m
Anchor Windlass c/w Bow	2 x Marine Equipment CMGIP54 15 kW
Crane	Nil

ANCHOR HANDLING & TOWING EQUIPMENT

Anchor Handling/ Towing Winch	50 T @ 4 m/min, Marine Equipment Double Drum, 1st Layer
AH/Towing Drum Capacity	1000 m (L) x 42 mm (Dia), 10 Layers
Spare Reel Drum Cap	Nil
Line Pull @ First Layer	50 T x 4 m/min Low Speed, 12 T x 12 m/min High Speed
Brake Holding	120 T
Towing Pin	100 T, ME100THTP Hydraulic Type
Shark Jaw	100 T, ME100THTP Hyd Type, Max Rope Size 38-60 mm (Dia), Max Chain Size 50 mm (Dia)
Stern Roller	SWL 150 T, 3.5 m (L) x 1.6 m (Dia)
Fairlead	4 Units
Bow Winch	Nil
Aft Tow Winch	Pull 50 T x 4 m/min (1st Layer Low Speed), Pull 12 T x 12 m/min (1st Layer High Speed), Brake Holding 120 T

ACCOMMODATION

Berths	3 x 4, 2 x 1, 4 x 2 Berths
Total Pax	20

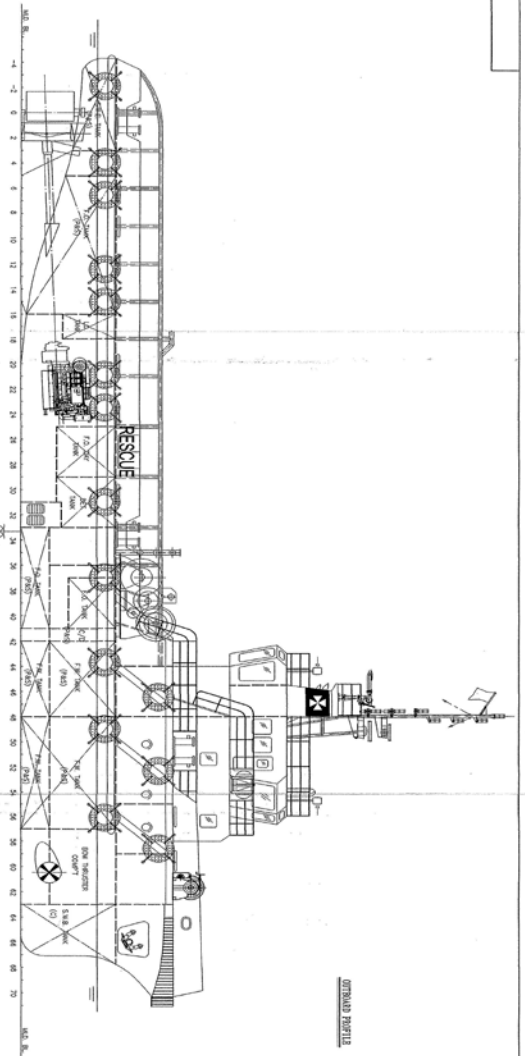
EXTERNAL FIRE-FIGHTING EQUIPMENT

Fi-Fi Notation	Fi-Fi 1, Fire Fighting System (FFS)
Fi-Fi Monitors	2 x 600 m ³ /hr, 90 m Throw Length
Fi-Fi Pump	1 x 1200 m ³ /hr

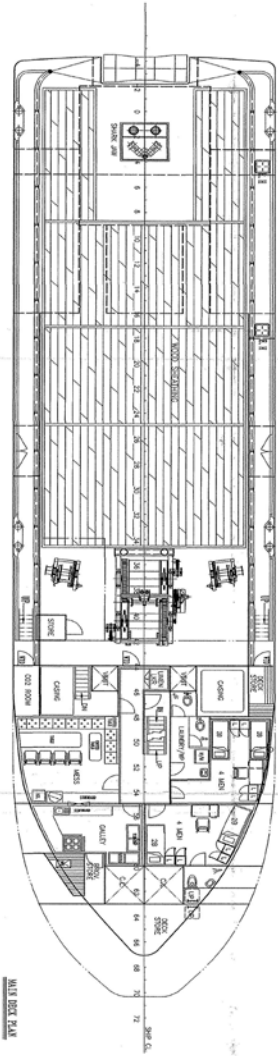
LIFE-SAVING EQUIPMENT

Life Rafts	2 x 20 Men, SOLAS Compliant
Rescue Boat c/w Davit	1 x 6 Men, 40 HP of Outboard Eng, 20 L, SOLAS Compliant

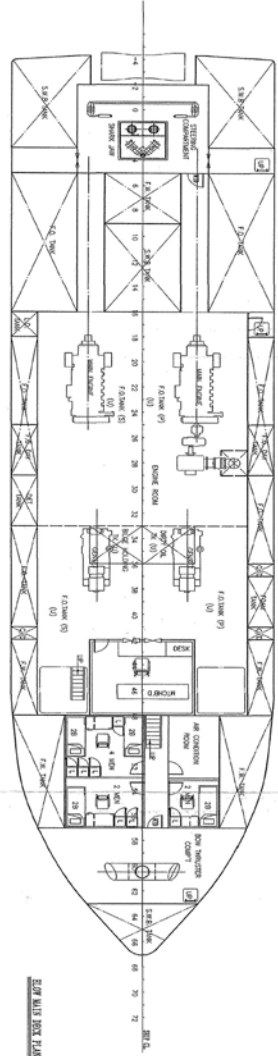
Particulars are believed to be correct but not guaranteed. Owners reserve the rights to amend the specifications without notifications. Particulars are entirely without warranty as to correctness and interested parties must inspect vessel's certificates, drawings or physical inspection of vessel.



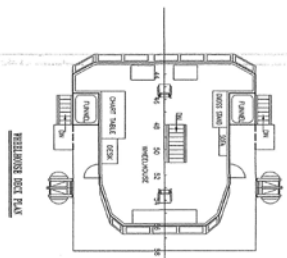
GENERAL PROFILE



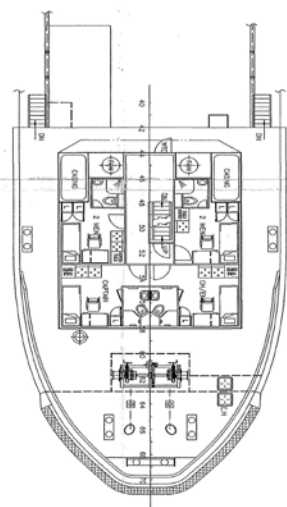
MAIN DECK PLAN



EQUA DECK BOX PLAN



HELICOPTER DECK PLAN



TRANSVERSE DECK PLAN

PRINCIPAL DIMENSIONS

LENGTH OVERALL	45.00 M
LENGTH WATERLINE	42.75 M
LENGTH B.P.	40.00 M
BREADTH MOULDED	11.00 M
DEPTH MOULDED	4.00 M
DESIGN DRAWT MOULDED	3.20 M
FUEL OIL	278.0 M ³
FRESH WATER	154.0 M ³
CLEAR DECK AREA	200.0 M ²
MAIN ENGINE	2 x 1750 BHP
SPEED (CRUALS)	12.0 KNOTS
BOLLARD PULL	40 TONS
COMPLEMENT	20 MEN

Project Name	45m TITANITE/RESCUE TESSIE	Scale	1:50
Client	LSH (L-0315101-01)	Drawn By	LSH (L-0315101-01)
Checked By		Approved By	
Issue No.	2006/110	Issue Date	11/09/07
Project Location	QUANGTRUNG PAUSE LANSION SHIPYARD	Project No.	LSH (L-0315101-01)
Project Manager	LSH (L-0315101-01)	Project Engineer	LSH (L-0315101-01)
Project Designer	LSH (L-0315101-01)	Project Checker	LSH (L-0315101-01)
Project Approver	LSH (L-0315101-01)	Project Sign-off	LSH (L-0315101-01)