

UNIWISE SUPPORTER

5220BHP/ PLATFORM SUPPLY VESSEL

PRINCIPAL PARTICULARS

Year Built	2012
Place Built	Poet Shipbuilding & Engineering, China
Design	Focal Marine & Offshore
Flag	Thailand
Length Overall	66.00 m
Length BP	58.50 m
Breadth Moulded	16.00 m
Depth Moulded	6.20 m
Draft (max)	4.85 m
Freeboard (SLL)	1380 mm
Class	BV
Notation	1 x Hull x Mach, Supply Vessel, Fire-Fighting Ship 1, Unrestricted navigation, DYNAPOS AM/AT R
GRT/ NRT	2259.00 T / 677.00 T
Deadweight	1940.57 T
Bollard Pull	Nil

DECK PARTICULARS

Clear Deck Area	500.00 m ²
Deck Carrying Load	600.00 T
Deck Strength	5.00 T/m ²

PERFORMANCE

Maximum Speed	13.2 Knots @ 19.9 T/24hrs
Economic Speed	11.0 Knots @ 12.8 T/24hrs

PROPULSION SYSTEM

Main Engines	2 x Yanmar 6EY26, 2573 BHP, 1920 kW @ 750 RPM
Auxiliary Engines	3 x Caterpillar 3412, 620 kW
Emergency Generator	Cummins 6CT, 152 kW
Shaft Generator	2 x Leroy Somer LSAM 50.2 VL10, 990 kW @ 1800 RPM
ROV Generator	Nil
Air Compressor	2 x Deno L2-25, 30 kg/cm ²
Bow Thruster	2 x Kawasaki CPP Electric Drive, 9 T Thrust
Stern Thruster	2 x Kawasaki CPP Electric Drive, 8 T Thrust
Propellers	2 x Berg, CPP 4 Blades, 2700 mm Dia
Steering Gear System	2 x Palmarine
Rudder	2 x DH Marine, High Lift Flap Rudder Type

TANK CAPACITIES

Fuel Oil	583.77 m ³
Fresh Water	467.36 m ³
Drill Water	470.00 m ³
Liquid Mud	415.098 m ³
Brine	415.098 m ³
Bilge	11.93 m ³
Ballast Water	688.42 m ³
Dry bulk	156.00 m ³ , 2 x 30.50 m ³ , 2 x 47.50 m ³



CARGO DISCHARGE CAPACITIES

Fuel Oil Pump	100 m ³ /hr @ 70 m head
Fresh Water Pump	100 m ³ /hr @ 70 m head
Drill Water Pump	2 x 100 m ³ /hr @ 70 m head
Liquid Mud Pump	2 x 75 m ³ /hr @ 20 bar
Brine Pump	2 x 75 m ³ /hr @ 20 bar
Bilge/Ballast/Fire/GS	2 x 45 m ³ /hr @ 24.5 bar
Dry Bulk Compressor	2 x 13 m ³ /min

DP SYSTEM

DP2, Kongsberg, 2 DGPS, Fanbeam, 3 Anemometers, 2 Motions Sensors, Independent Joystick System

DECK EQUIPMENT

Anchors & Chain	2 x Stockless Anchor 1710 kg, 36 mm U3 Stud Link Chains, 220 m each
Tugger Winch	Nil
Capstan	2 x ME Electro Hydraulic, 5T @ 15m/min
Anchor Windlass c/w Bow	ME-36U3HWMW-GDG-06/09, rate pull of 10 T @ 9 m/min
Crane	SWL 3 T @ 14 m Radius (max Radius)
Stern Roller	1.7 m (Dia) x 4.4 m (Width), SWL 200 T

ACCOMMODATION

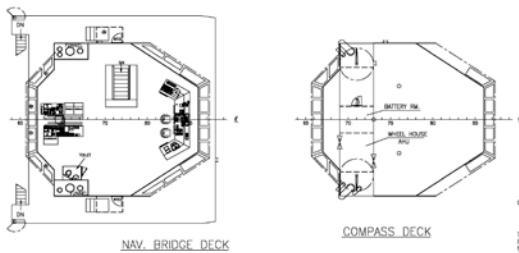
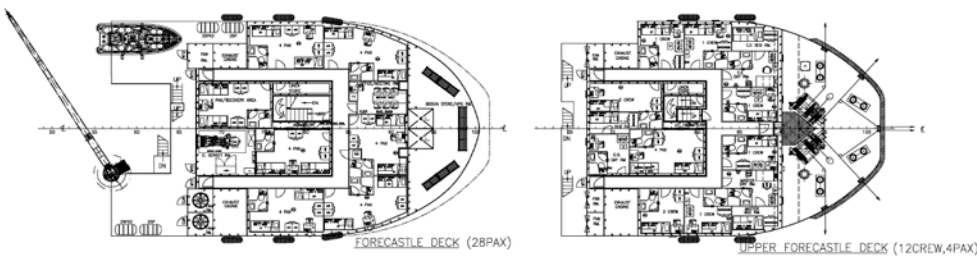
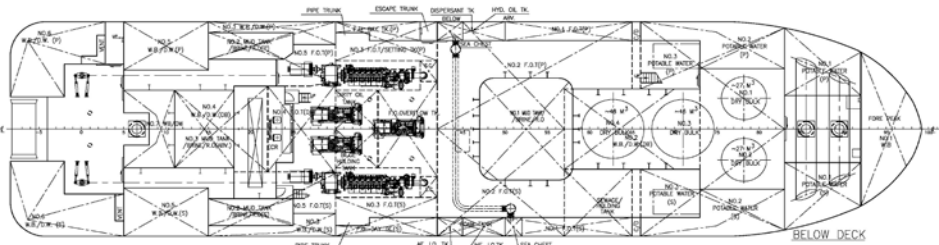
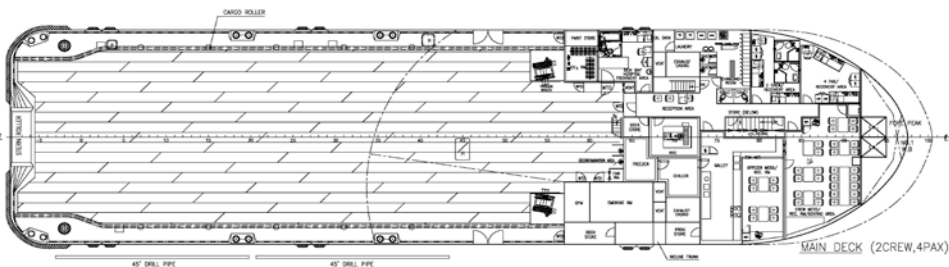
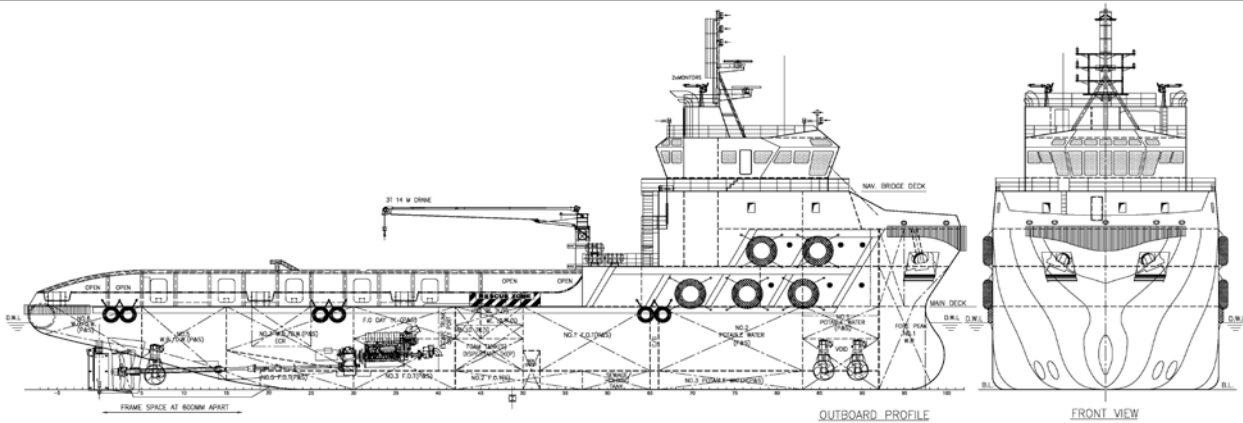
Berths	8 x 1, 3 x 2, 9 x 4 Berths
Total Pax	50

EXTERNAL FIRE-FIGHTING EQUIPMENT

Fi-Fi Notation	Fi-Fi Ship 1
Fi-Fi Monitors	2 x 1200 m ³ /hr, 120 m Throw Length
Fi-Fi Pump	2 x 1700 m ³ /hr

LIFE-SAVING EQUIPMENT

Life Rafts	6 x 25 men, SOLAS Compliant
Rescue Boat c/w Davit	1 x 15 men, 118 kW Inboard Engine, 50 L Fuel, SOLAS Compliant



PRINCIPAL PARTICULARS

LENGTH OA _____ 66.00m
 LENGTH BP _____ 58.50m
 BEAM MLD _____ 16.00m
 DEPTH MLD _____ 6.20m
 DRAFT DESIGNED _____ 5.00m
 DRAFT SCANTLING _____ 5.20m
 COMPLEMENT _____ 50 MEN
 MAIN ENGINE _____ 2 x 2610 PS
 TRIAL SPEED _____ 12 KTS

APPROXIMATE CARGO CAPACITIES

DEADWEIGHT _____ 2000 T
 CARGO DECK AREA (APPR) _____ 500 M²@51/M²
 DECK CARGO _____ 600 T
 FUEL OIL _____ 550 M³
 DW _____ 470 M³
 WB _____ 620 M³
 POTABLE WATER _____ 380 M³
 MUD/BRINE/R.O. _____ 400 M³
 CEMENT _____ 150 M³(-5,300 FT³)

ISSUED FOR APPROVAL

1	REVISED AS PER OWNER COMMENTS	WJ/LJ	JUN-15-2012
REV NO.	REVISION DESCRIPTION	BY	DATE
OWNER			
BUILDER	POET SHIPBUILDING & ENGINEERING PTE LTD HULL NO. POET1475		
PROJECT	66M PLATFORM SUPPLY/OIL RECOVERY/VESSEL		
APPROVE	DWG TITLE	JOB NO.	P-1598
VERIFY	GENERAL	DWG NO.	P-1598-001
CHECKER	ARRANGEMENT	SCALE	1:100 (A1)
DRAWN	WJ/LJ	CLASS	ABS

CLASS ABS ● #1 OFFSHORE SUPPORT VESSEL, OIL RECOVERY CAPABILITY CLASS 2, FIRE FIGHTING CLASS 1, ● ABS ● OPS-2

THIS DOCUMENT AND THE CONTENT ARE COPYRIGHT AND REMAIN PROPERTY OF FOCAL MARINE & OFFSHORE CORP LTD. THEY MUST NOT BE COPIED IN WHOLE OR IN PART TO ANY THIRD PARTY FOR ANY PURPOSE WITHOUT PRIOR WRITTEN PERMISSION FROM FOCAL MARINE & OFFSHORE CORP LTD. THE RECEIPT OF THIS DOCUMENT IMPLIES ACCEPTANCE OF THIS CONDITION.

FOCAL MARINE & OFFSHORE CORP LTD
 TEL: 86-21-58705786 FAX: 86-21-50313265 EMAIL: info@focalmarine.com