



## Uniexpress 23

Fast Crewboat/ Utility Vessel

### PRINCIPAL PARTICULARS

Year Built	2013
Place Built	Singapore
Design	Penguin - Flex - 38
Flag	Thailand
Length Overall	38.00 m
Length BP	34.96 m
Breadth Moulded	7.60 m
Depth Moulded	3.65 m
Draft (max)	1.89 m
Freeboard (SLL)	1.41 m
Class	BV
Notation	I +HULL +MACH "CREWBOAT"
GRT/ NRT	257.00 T / 77.00 T
Deadweight	130.68 T

### DECK PARTICULARS

Clear Deck Area	80.00 m <sup>2</sup>
Deck Carrying Load	45.00 T
Deck Strength	2.00 T/m <sup>2</sup>

### PERFORMANCE

Maximum Speed	21 Knots @ 14.83 T/24 hrs @ 130.97 T DWT
Economic Speed	16 Knots @ 7.70 T/24 hrs @ 130.97 T DWT

### PROPULSION SYSTEM

Main Engines	3 x Baudouin 12M26.2-A 225, 1100 BHP @ 1900 RPM, Total 3300 BHP
Auxiliary Engines	2 x Baudouin-6W105S, 50 Hz @ 1500 RPM
Portable Generator	KDE3300E Diesel Generator, 50 Hz, 115/230V, 3 kW
Emergency Generator	Nil
Bow Thruster	Linde HPV55-02 , Bow Thruster S-45 KW
Propellers	3 x Nickel Aluminum Bronze Men Cast
Steering Gear System	2 x Hydraulic Pump
Rudder	2 x Stainless Steel Air Foil Type

### TANK CAPACITIES

Fuel Oil	65.34 m <sup>3</sup>
Fresh Water	30.31 m <sup>3</sup>

### CARGO DISCHARGE CAPACITIES

Fuel Oil Pump	23.00 m <sup>3</sup> /hr
Fresh Water Pump	Nil
Bilge	30.00 m <sup>3</sup> /hr

### DECK EQUIPMENT

Anchor Windlass c/w Bow	Hypac, HHAW15-32
-------------------------	------------------



### ACCOMMODATION

Passenger Seats	90
Crew	2 x 4, 2 x 1 = 10

### EXTERNAL FIRE-FIGHTING EQUIPMENT

Fi-Fi Notation	Nil
Fi-Fi Monitors	1 x Fi-Fi Monitor
Fi-Fi Pump	Centrifugal Pump, 600 m <sup>3</sup> /hr @ 130 m
Oil Dispersant System	V-Jet nozzles (P&S) 200 L, Dispersant Tank

### INTERNAL FIRE-FIGHTING & ANTI-POLLUTION EQUIPMENT

Emergency Fire Pump	Matsuka/ Yanmar-QP 205, 3600 RPM @ 530L/m
CO2 Fi-Fi System	4 x Fixed CO2 System for Engine room
Fire Detection & Alarm	Tyco MINERVA T2000

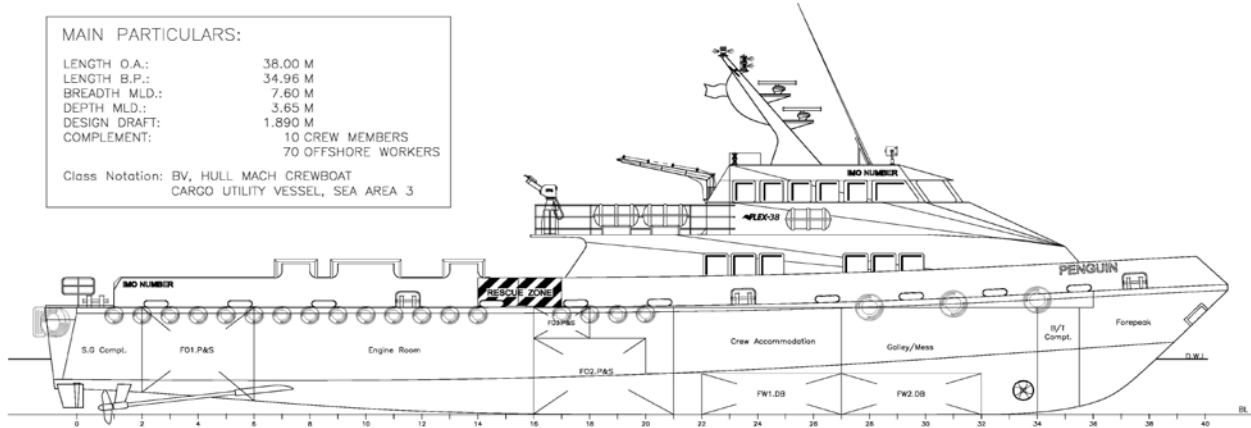
### LIFE-SAVING EQUIPMENT

Life Rafts	6 x 25, 2 x 20, 2 x 10 men, SOLAS Compliant
Rescue Boat c/w Davit	Nil

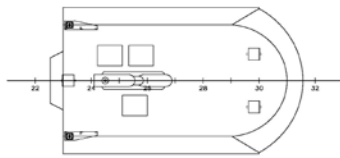
**MAIN PARTICULARS:**

LENGTH O.A.: 38.00 M  
 LENGTH B.P.: 34.96 M  
 BREADTH M.L.D.: 7.60 M  
 DEPTH M.L.D.: 3.65 M  
 DESIGN DRAFT: 1.890 M  
 COMPLEMENT: 10 CREW MEMBERS  
 70 OFFSHORE WORKERS

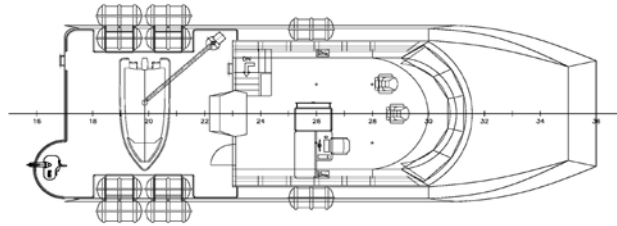
Class Notation: BV, HULL MACH CREWBOAT  
 CARGO UTILITY VESSEL, SEA AREA 3



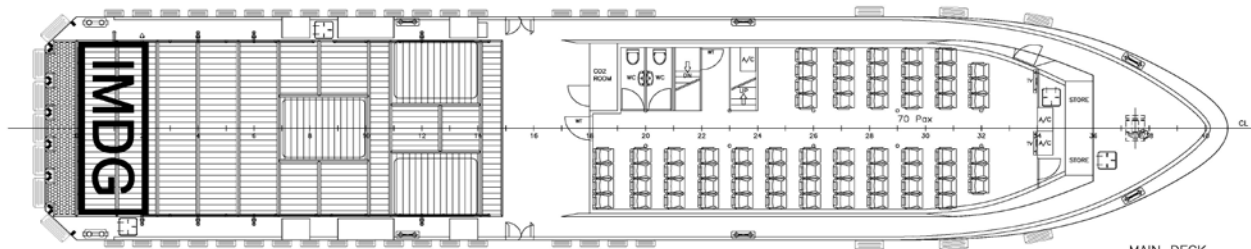
PROFILE



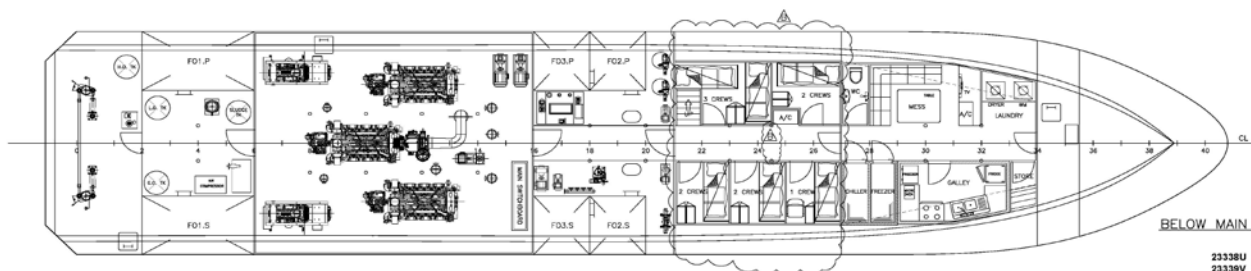
WHEELHOUSE TOP



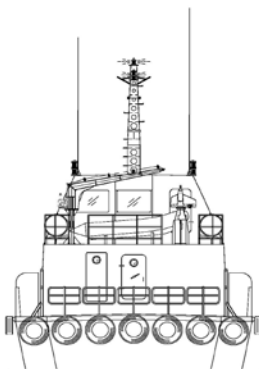
WHEELHOUSE PLAN



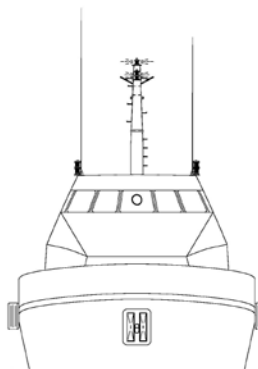
MAIN DECK



BELOW MAIN DECK



STERN VIEW



FRONT VIEW

23338U  
 23339V  
**BUREAU VERITAS Section 23340W**  
**VU avec observations**

Singapore, 15-Jan-2013

(Electronic document)  
 The plan approval office

SEE BY COMMENT SHEET SP0130022

REV. B	UPDATE CREW CABIN ROOM LAYOUT AND SHIFT PILLAR LOCATION	THH	22/OCT/2012	YARD COMMENT	
REV. A	MODIFICATION	DCNC	DATE	REMARK	
PROJECT: FLEX-38(H200-202)					
TITLE: GENERAL ARRANGEMENT					
<b>PENGUIN SHIPYARD INTERNATIONAL PTE LTD</b> 18 Tuas Basin Link, Singapore 638794 Tel: 68628322 Fax: 68622150 <small>The drawing and the information contained herein is supplied on the understanding that they are the exclusive property of Penguin Shipyard International Pte Ltd. They must not be used or reproduced in whole or in part, without permission in writing.</small>					
DRAWN:	ZH	DATE:	01.AUG.2011	SIZE:	A1
CHECKED:	PATRICK	DATE:	08.AUG.2011	SCALE:	1:75
APPROVED:	PATRICK	DATE:	20.AUG.2011	REVISION:	G
DRAWING No.: PSI-H196-G-01				SHEET: 1 OF 1	