



# Uniexpress 24

Fast Crewboat/ Utility Vessel



## PRINCIPAL PARTICULARS

Year Built	2013
Place Built	Indonesia
Design	Penguin - Flex - 38
Flag	Thailand
Length Overall	38.00 m
Length BP	34.96 m
Breadth Moulded	7.60 m
Depth Moulded	3.65 m
Draft (max)	1.89 m
Freeboard (SLL)	1.41 m
Class	BV
Notation	I +HULL +MACH, Crewboat, Sea Area 3, Max significant wave ht > 3.0 m
GRT/ NRT	257.00 T/ 77.00 T
Deadweight	33.74 T

## DECK PARTICULARS

Clear Deck Area	80.00 m <sup>2</sup>
Deck Carrying Load	45.00 T
Deck Strength	2.00 T/m <sup>2</sup>

## PERFORMANCE

Maximum Speed	21 Knots @ 14.83 T/24 hrs @ 130.97 T DWT
Economic Speed	16 Knots @ 7.70 T/24 hrs @ 130.97 T DWT

## PROPULSION SYSTEM

Main Engines	3 x Baudouin 12M26.2-A 225, 1100 BHP @ 1900 RPM, Total 3300 BHP
Auxiliary Engines	2 x Baudouin-6W105S, 50 Hz @ 1500 RPM
Portable Generator	KDE3300E Diesel Generator, 50 Hz, 115/230V, 3 kW
Emergency Generator	Nil
Bow Thruster	Linde HPV55-02 , Bow Thruster S-45 KW
Propellers	3 x Nickel Aluminum Bronze Men Cast
Steering Gear System	2 x Hydraulic Pump
Rudder	2 x Stainless Steel Air Foil Type

## TANK CAPACITIES

Fuel Oil	65.00 m <sup>3</sup>
Fresh Water	30.00 m <sup>3</sup>

## CARGO DISCHARGE CAPACITIES

Fuel Oil Pump	23.00 m <sup>3</sup> /hr
Fresh Water Pump	Nil
Bilge	30.00 m <sup>3</sup> /hr

## DECK EQUIPMENT

Anchor Windlass c/w Bow	Hypac, HHAW15-32
-------------------------	------------------

## ACCOMMODATION

Passenger Seats	90
Crew	2 x 4, 2 x 1 = 10

## EXTERNAL FIRE-FIGHTING EQUIPMENT

Fi-Fi Notation	SFP-600 m <sup>3</sup> /h, 250 x 350 XP
Fi-Fi Monitors	1 x Fi-Fi Monitor
Fi-Fi Pump	Centrifugal Pump, 600 m <sup>3</sup> /hr @ 130 m
Oil Dispersant System	V-Jet nozzles (P&S) 200 L, Dispersant Tank

## INTERNAL FIRE-FIGHTING & ANTI-POLLUTION EQUIPMENT

Emergency Fire Pump	Matsuka/ Yanmar-QP 205, 3600 RPM @ 530L/m
CO2 Fi-Fi System	4 x Fixed CO2 System for Engine room
Fire Detection & Alarm	Tyco MINERVA T2000

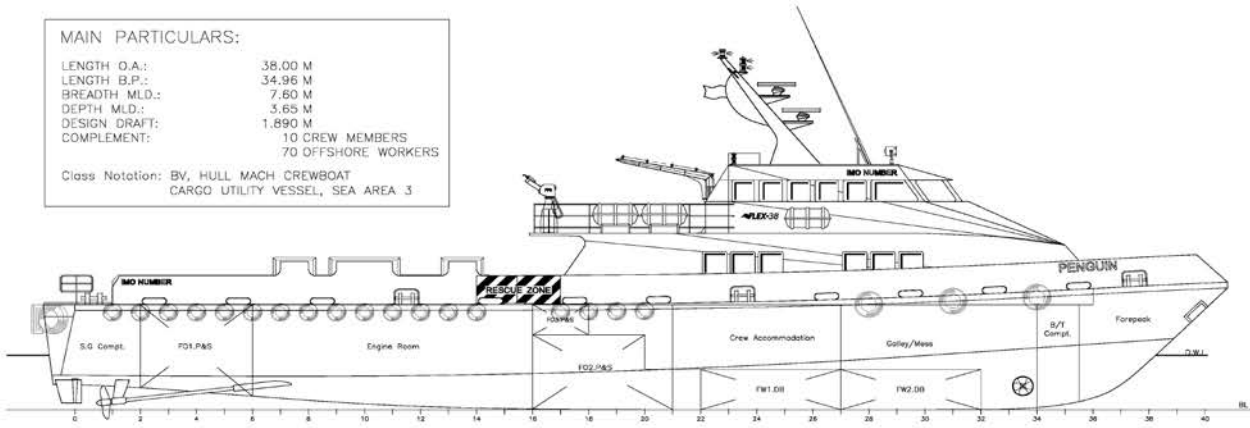
## LIFE-SAVING EQUIPMENT

Life Rafts	6 x 25, 2 x 20, 2 x 10 men, SOLAS Compliant
Rescue Boat c/w Davit	Nil

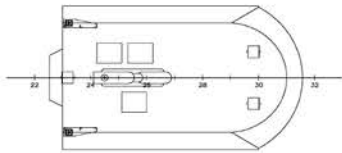
**MAIN PARTICULARS:**

LENGTH O.A.: 38.00 M  
 LENGTH B.P.: 34.96 M  
 BREADTH MLD.: 7.60 M  
 DEPTH MLD.: 3.65 M  
 DESIGN DRAFT: 1.890 M  
 COMPLEMENT: 10 CREW MEMBERS  
 70 OFFSHORE WORKERS

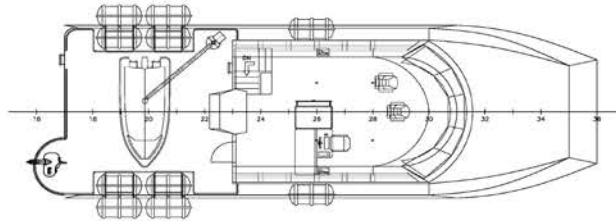
Class Notation: BV, HULL MACH CREWBOAT  
 CARGO UTILITY VESSEL, SEA AREA 3



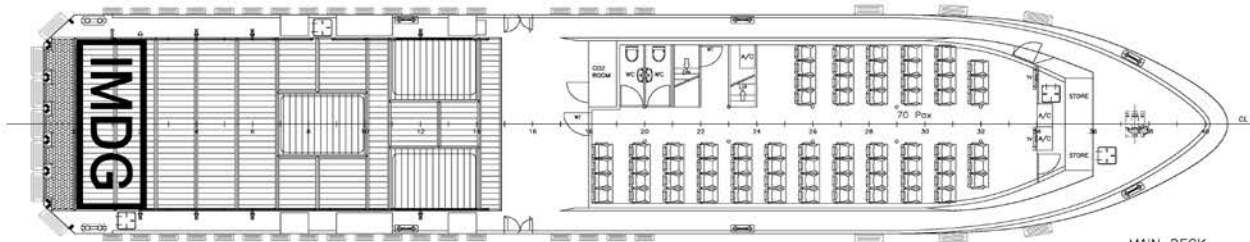
PROFILE



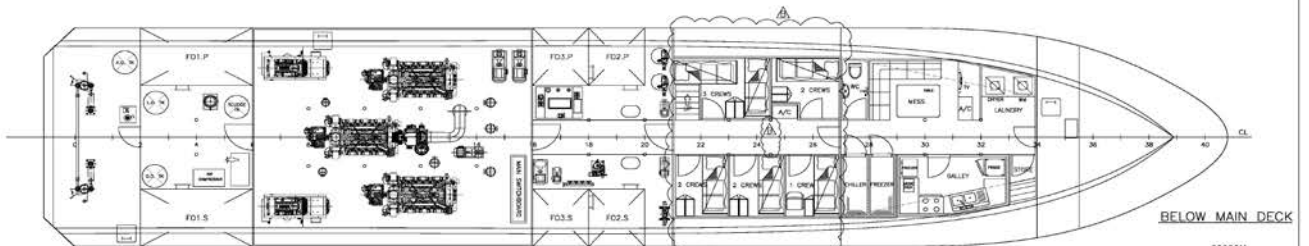
WHEELHOUSE TOP



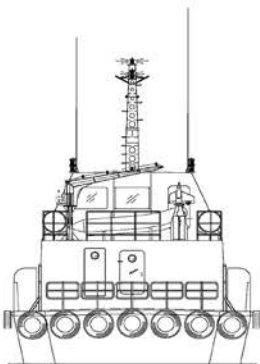
WHEELHOUSE PLAN



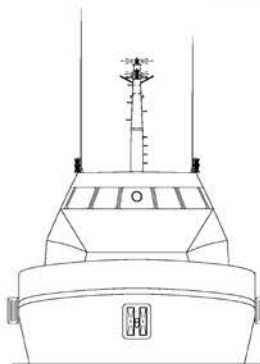
MAIN DECK



BELOW MAIN DECK



STERN VIEW



FRONT VIEW

23328U  
 23329V  
 BUREAU VERITAS Section 23340W...  
 VU avec observations

Singapore, 15-Jan-2012

(Electronic document)  
 The plan approval office

SEE BY COMMENT SHEET 8P0187003M

3	UPDATE CREW CABIN ROOM LAYOUT AND SHIFT PILLAR LOCATION	THH	02/OCT/2012	YARD COMMENT
REV:	MODIFICATION	DATE	DATE	REMARK
PROJECT:	FLEX-38(H200-202)			
TITLE:	GENERAL ARRANGEMENT			
<b>PENGUIN SHIPYARD INTERNATIONAL PTE LTD</b> 18 Tuas Basin Link, Singapore 630784 Tel: 68628322 Fax: 68622150 This drawing and the information contained herein is supplied on the understanding that they are the exclusive property of Penguin Shipyards International Pte Ltd. They must not be used or reproduced in whole or in part, without permission in writing.				
DRAWN:	ZH	DATE:	01.AUG.2011	SIZE: A1
CHECKED:	PATRICK	DATE:	08.AUG.2011	SCALE: 1:75
APPROVED:	PATRICK	DATE:	20.AUG.2011	REVISION: G
DRAWING No.:	PSI-H196-G-01			SHEET: 1 OF 1