



## EXPRESS 83

Fast Utility Craft/ Crewboat

### PRINCIPAL PARTICULARS

Year Built	2014
Place Built	Indonesia, Batam
Design	Flex - 40S, Penguin Shipyard Int'l
Flag	Malaysia
Length Overall	40.00 m
Length BP	36.51 m
Breadth Moulded	7.60 m
Depth Moulded	3.65 m
Draft (max)	1.89 m
Freeboard (SLL)	1.41 m
Class	BV
Notation	I, HULL, MACH, Crewboat, Unrestricted Navigation, Max Significant Wave Ht < 3.00 m
GRT/ NRT	239.00 T / 71.00 T
Deadweight	122.77 T

### DECK PARTICULARS

Clear Deck Area	100.00 m <sup>2</sup>
Deck Carrying Load	60.00 T
Deck Strength	2.00 T/m <sup>2</sup>

### PERFORMANCE

Maximum Speed	27 Knots @ 16.5 T/24 hrs @ 35 DWT
Economic Speed	25 Knots @ 14.5 T/24 Hrs @ 35 DWT

### PROPULSION SYSTEM

Main Engines	3 x Cummins KTA38-M2 (IMO Tier II), 1350 BHP @ 1900 RPM, Total 4050 BHP
Auxiliary Engines	3 x Cummins 6BT5.9-D(M), 80 kW @ 1500 RPM
Portable Generator	Denko KDE3300I, Air-cooled Diesel Engine
Bow Thruster	Fluidmechanica HMH-650, 0.9 T Thrust
Propellers	3 x Fixed Pitch Propellers, 5-Blade Mencast
Steering Gear System	2 x Duplex Electro Hydraulic RAM
Rudder	2 x Balanced Rudder

### TANK CAPACITIES

Fuel Oil	86.00 m <sup>3</sup> @ 95% fill
Fresh Water	29.38 m <sup>3</sup> @ 95% fill

### CARGO DISCHARGE CAPACITIES

Fuel Oil Pump	23.00 m <sup>3</sup> /hr
Fresh Water Pump	Nil
Bilge	Nil

### DECK EQUIPMENT

Anchor Windlass c/w Bow	Hypac Electro Hydraulic Winch c/w Wire Rope, Chain & Single Anchor
Crane	Palfinger PK4501, 0.5 T @ 6 m



### ACCOMMODATION

Passenger Seats	90
Crew	1 x 1, 3 x 2, 1 x 3 = 10

### EXTERNAL FIRE-FIGHTING EQUIPMENT

Fi-Fi Notation	Equivalent to 1/4 FiFi System c/w Water Spray
Fi-Fi Monitors	600 m <sup>3</sup> /hr, 100 m head
Fi-Fi Pump	600 m <sup>3</sup> /hr
Oil Dispersant System	1 V-jet Nozzles (P & S) @ 200 L

### INTERNAL FIRE-FIGHTING & ANTI-POLLUTION EQUIPMENT

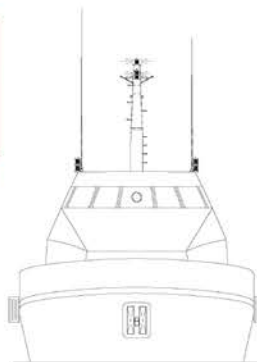
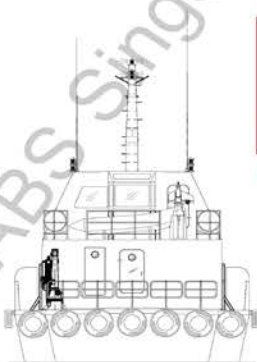
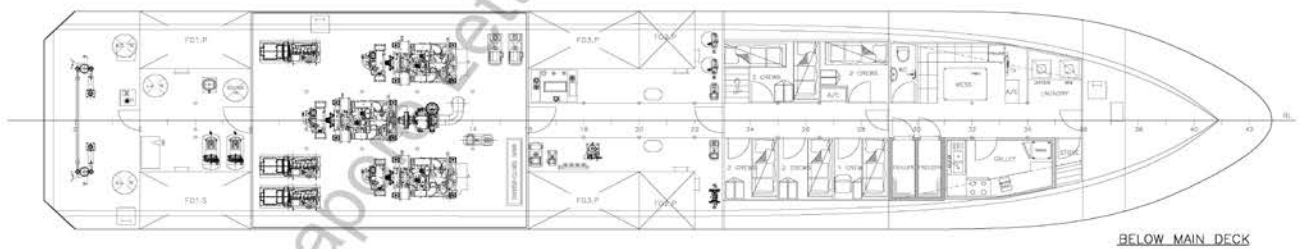
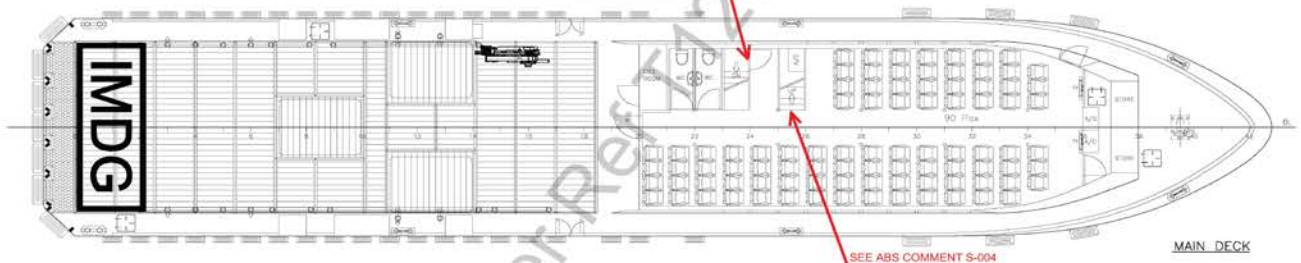
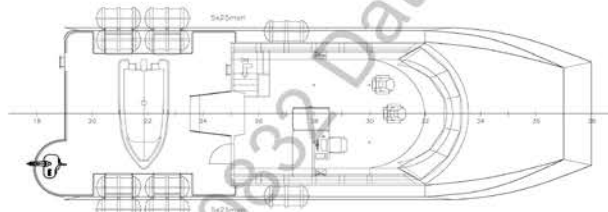
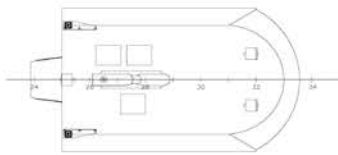
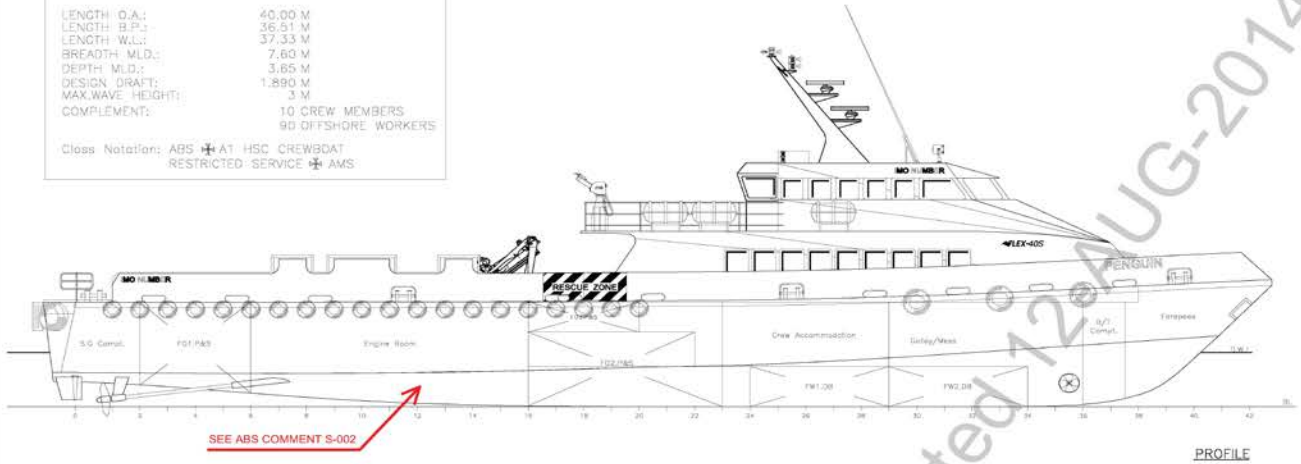
Emergency Fire Pump	Matsuka / Yanmar, 30 m <sup>3</sup> /hr @ 35m head
CO2 Fi-Fi System	Fixed CO2 System for Engine Room
Fire Detection & Alarm	Tyco Minerva T2000CV

### LIFE-SAVING EQUIPMENT

Life Rafts	5 x 25 men/side, SOLAS Compliant
Rescue Boat c/w Davit	1 x 6 men, Inflatable boat with 25 HP Ouboard engine

LENGTH O.A.: 40,00 M  
 LENGTH B.P.: 36,51 M  
 LENGTH W.L.: 37,53 M  
 BREADTH M.L.D.: 7,63 M  
 DEPTH M.L.D.: 3,65 M  
 DESIGN DRAFT: 1,890 M  
 MAX. WAVE HEIGHT: 3 M  
 COMPLEMENT: 10 CREW MEMBERS  
 90 OFFSHORE WORKERS

Class Notation: ABS  $\star$  A1 HSC CREWB DAT  
 RESTRICTED SERVICE  $\star$  AMS



**REVIEWED**  
 Details of this review  
 are as indicated in the  
 ABS letter  
  
 SEE ABS LETTER  
 FOR COMMENTS

- DOOR AT FR.36, BELOW MAIN DECK, TO OPEN IN DIRECTION OF ESCAPE.
- EFFICIENT MEANS OF DRAINAGE TO BE PROVIDED FOR DECKHOUSE AT MAIN DECK.

PROJECT:	FLEX-40S (H258)		
TITLE:	GENERAL ARRANGEMENT		
 <b>PENGUIN SHIPYARD INTERNATIONAL PTE LTD</b> 18 Tuas Basin Link, Singapore 638791 Tel: 68628322 Fax: 68622150			
<small>This drawing and the information contained herein is supplied on the understanding that they are the exclusive property of Penguin Shipyard International Pte Ltd. They must not be used or reproduced in whole or in part, without permission in writing.</small>			
DRAWN:	JH	DATE:	18.MAY.2013
CHECKED:	THH	DATE:	20.MAY.2013
APPROVED:	STACY	DATE:	20.MAY.2013
DRAWING No.:	PSI-H258-G-01	SHEET:	1 OF 1