

UNIWISE ADVENTURE

65M / DP2 / 7000BHP / AH / OSV

PRINCIPAL PARTICULARS

Year Built	2014
Place Built	Wuchang, China
Design	Focal Marine & Offshore
Flag	Thailand
Length Overall	64.80 m
Length BP	58.50 m
Breadth Moulded	16.00 m
Depth Moulded	6.20 m
Draft (max)	5.00 m
Freeboard (SLL)	1209 mm
Class	BV
Notation	1 x Hull x Mach, Tug; Supply Vessel LHNS; Fi-Fi Ship; Oil Rec AH Vessel; SP50 Unrestricted Navigation, DYNAPOS AM/AT R
GRT/ NRT	2274.00 T / 682.00 T
Deadweight	1782.59 T
Bollard Pull	90.00 T

DECK PARTICULARS

Clear Deck Area	435.00 m ²
Deck Carrying Load	600.00 T
Deck Strength	7.00 T/m ²

PERFORMANCE

Maximum Speed	13.4 Knots @ 25 T/24hrs
Economic Speed	12.0 Knots @ 15 T/24hrs

PROPULSION SYSTEM

Main Engines	2 x Daihatsu 8DKM-28e, 3500 BHP, 2666 kW @ 750 RPM, Total 7000 BHP
Auxiliary Engines	3 x Caterpillar C18, 492 kW @ 1500 RPM
Emergency Generator	Cummins QSB7-DM, 99 kW
Shaft Generator	2 x Leroy Somer, 1200 kW
ROV Generator	Nil
Air Compressor	2 x Sperre HL2/105, 30 kg/cm ²
Bow Thruster	2 x Brunvoll CPP Elec Drive, 9T
Stern Thruster	Brunvoll CPP Elec Drive, 8T
Propellers	2 x NGC NCP85, CCP 4 Blades
Steering Gear System	2 x Palmarine 45
Rudder	2 x NACA High Lift Flap Type

TANK CAPACITIES

Fuel Oil	948.578 m ³
Fresh Water	367.00 m ³
Drill Water	584.80 m ³
Liquid Mud	380.30 m ³
Brine	380.30 m ³
Bilge	13.20 m ³
Ballast Water	584.80 m ³
Dry bulk	37.5 m ³ x 4, 150.00 m ³



CARGO DISCHARGE CAPACITIES

Fuel Oil Pump	100 m ³ /hr @ 70 m head
Fresh Water Pump	100 m ³ /hr @ 70.07 m head
Drill Water Pump	100 m ³ /hr @ 70.07 m head
Liquid Mud Pump	2 x 70 m ³ /hr @ 70 m head
Brine Pump	Nil
Bilge/Ballast/Fire/GS	2 x 100 m ³ /hr @ 70 m head
Dry Bulk Compressor	2 x 13 m ³ /hr @ 0.59 Mpa

DP SYSTEM

DP2, Kongsberg, 2 DGPS, Fanbeam, 3 Anemometers, 3 Motions Sensors, Independent Joystick System

DECK EQUIPMENT

Anchors & Chain	2 x Stockless Anchor 1960kg each
Tugger Winch	2 x MacGregor Electro Hydraulic 15T @ 15m/min
Capstan	2 x MacGregor Electro Hyd 10T @ 15m/min
Anchor Windlass c/w Bow	MacGregor Electro Hydraulic c/w Gypsy and Warping Ends
Crane	SWL 2 T @ 15 m radius w/ Man-Riding Capability

ANCHOR HANDLING & TOWING EQUIPMENT

AH/Towing Winch	MacGregor Electro Hydraulic
AH Drum Capacity	1500 m
Towing Drum Capacity	1500 m
Spare Reel Drum Cap.	1500 m
Line Pull @ First Layer	150 T @ 6 m/min
Brake Holding	250 T
Towing Pin	250 T
Shark Jaw	250 T
Stern Roller	1.7 m (dia) x 4.4 m (width), SWL 2500 kN

ACCOMMODATION

Berths	8 x 1, 5 x 2, 8 x 4 Berths
Total Pax	50

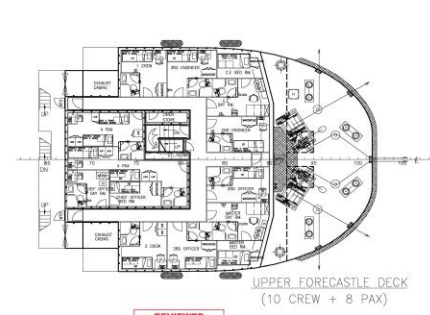
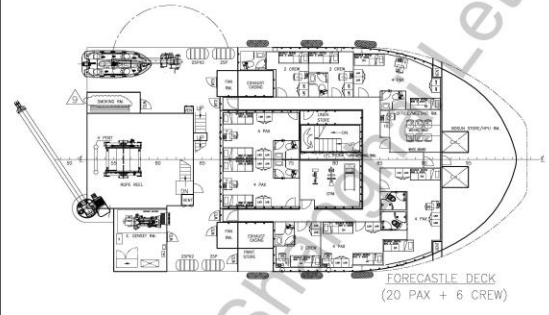
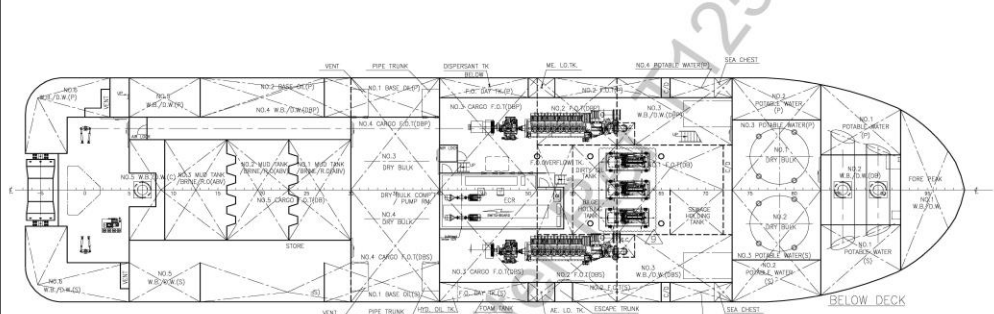
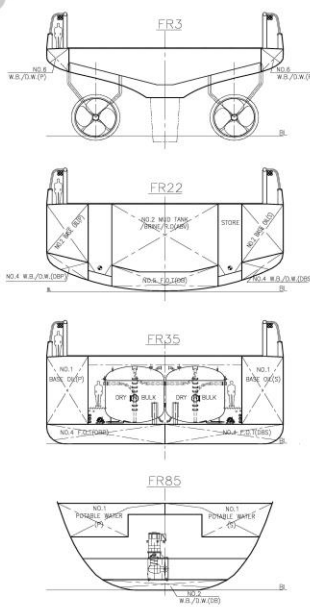
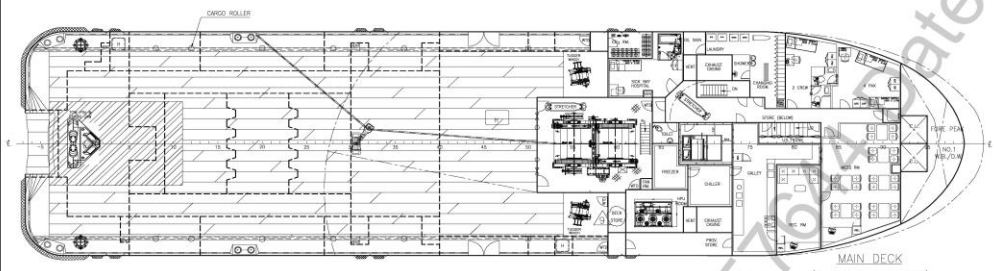
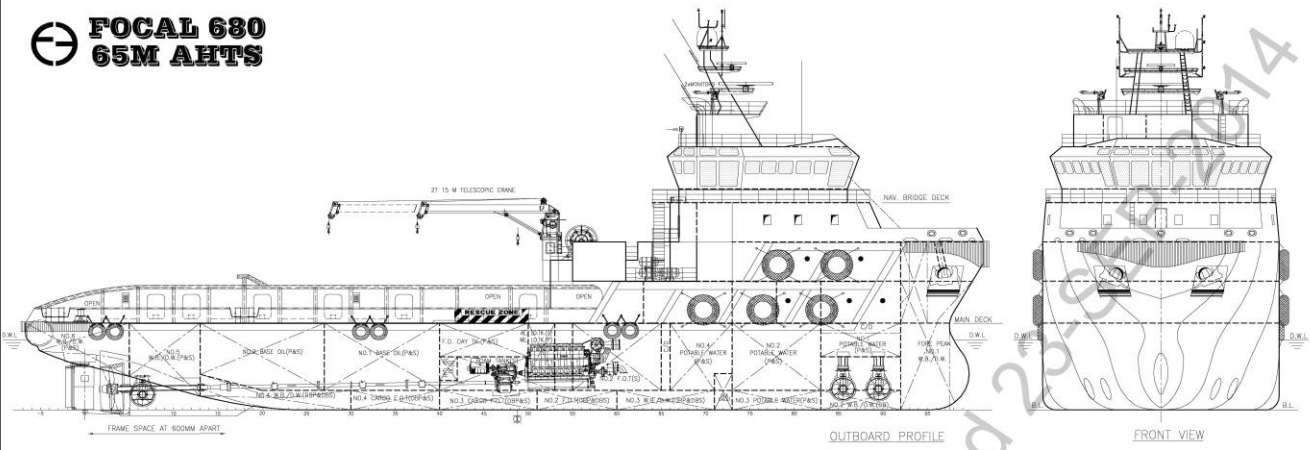
EXTERNAL FIRE-FIGHTING EQUIPMENT

Fi-Fi Notation	Fi-Fi Class 1
Fi-Fi Monitors	2 x 1200 m ³ /hr, 120 m Throw Length
Fi-Fi Pump	2 x 1200 m ³ /hr

LIFE-SAVING EQUIPMENT

Life Rafts	6 x 25 men, SOLAS Compliant
Rescue Boat c/w Davit	1 x 6 men, 20.6 kW Inboard Engine, 40 L Fuel, SOLAS Compliant

FOCAL 680 65M AHTS



PRINCIPAL PARTICULARS

LENGTH OA	64.80 M
LENGTH BP	58.50 M
BEAM MLD.	16.00 M
DEPTH MLD.	6.20 M
DRAFT DESIGNED	5.00 M
DRAFT SCANTLING	5.20 M
COMPLEMENT	50 MEN
MAIN ENGINE	2 x 2,866 KW
TRIAL SPEED	13 KTS
BOLLARD PULL	90 T

APPROXIMATE CARGO CAPACITIES

DEADWEIGHT	1,600 T
CARGO DECK AREA	435 M ² @ 7 T/M ²
DECK CARGO	600 T
SHIP F.O./CARGO F.O.	550 M ³
DW/WB	500 M ³
BASE OIL	350 M ³
POTABLE WATER	300 M ³
MUD/BRINE/R.O.	370 M ³
CEMENT	150 M ³

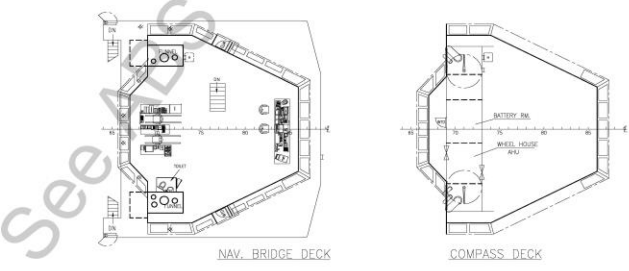
OTHER COMMENTS SEE ABS LETTER



CLASS: ABS A1 OFFSHORE SUPPORT VESSEL
 SUPPLY-HALS,
 FTV 1,
 SSP-C1,
 SSP3
 AMS
 DPS-2

THIS DOCUMENT AND THE CONTENT ARE COPYRIGHT AND REMAIN PROPERTY OF FOCAL MARINE & OFFSHORE. THEY MUST NOT BE COPIED IN WHOLE OR IN PART TO ANY THIRD PARTY FOR ANY PURPOSE WITHOUT PRIOR WRITTEN PERMISSION FROM FOCAL MARINE & OFFSHORE. THE RECEIPT OF THIS DOCUMENT IMPLIES ACCEPTANCE OF THIS CONDITION.

9	AMENDED AS PER OTHER COMMENTS	ZF	SEP-14-2014
REV NO.	REVISION DESCRIPTION	BY	DATE
OWNER: UNIWISE OFFSHORE LTD			
BUILDER: WUCHANG SHIPBUILDING INDUSTRY			
PROJECT: 64.8M ANCHOR HANDLING TUG / OIL RECOVERY / SUPPLY VESSEL "FOCAL 680"			
APPROVE	DWG TITLE: GENERAL ARRANGEMENT	JOB NO.:	P-1123
VERIFY		DWG NO.:	P-1121-001
CHECKER		SCALE:	1:150 (A1)
DRAWER	ZF	CLASS:	ABS
FOCAL MARINE & OFFSHORE			
SHANGHAI TEL: 86-21-58705786 FAX: 86-21-58705785			
SINGAPORE TEL: 65-68481287 FAX: 65-68481291			



See ABS SHIPBUILDER LETTER NO. 257161 DATED 20140914



www.meogroup.com