

Uniexpress 21

Fast Crewboat/ Utility Vessel



PRINCIPAL PARTICULARS

Year Built	2002
Place Built	Henderson-Western Australia
Design	Wave Naster Int'l
Flag	Thailand
Length Overall	34.00 m
Length BP	32.59 m
Breadth Moulded	8.00 m
Depth Moulded	3.50 m
Draft (max)	2.60 m
Freeboard (SLL)	1.90 m
Class	BV
Notation	I +HULL, +MACH, Crewboat, Special Service (Industrial Exploration & Petroleum Producer), Cargo Utility Vessel, Unrestricted navigation
GRT/ NRT	205.00 T/ 63.00 T
Deadweight	119.10 T

DECK PARTICULARS

Clear Deck Area	56.00 m ²
Deck Carrying Load	40.00 T
Deck Strength	1.50 T/m ²

PERFORMANCE

Maximum Speed	20 Knots @ 12.0 T/24 hrs
Economic Speed	15 Knots @ 8.0 T/24 hrs

PROPULSION SYSTEM

Main Engines	3 x Cummins KTA 38-M2, 1350 BHP @ 1950 RPM, Total 4050 BHP00
Auxiliary Engines	2 x Cummins 6BT5.9- D(M), 80 kW @ 1500 RPM
Propellers	3 x Fixed Pitch Propeller, 4-blade Nickel-Aluminium Bronze Propeller Stone Marine
Steering Gear System	W.E.G MOT AL100L FV16334
Rudder	2 Units

TANK CAPACITIES

Fuel Oil	50.00 m ³
Fresh Water	10.00 m ³
Bilge	Varisco E30-160, C.I./ Bronze Impellor, 15 m ³ /h

DECK EQUIPMENT

Anchor Windlass c/w Bow	Electro Hydraulic Winch c/w Wire Rope, Chain & Single Anchor
-------------------------	--

ACCOMMODATION

Passenger Seats	120
Crew	1 x 2, 2 x 3 = 8

EXTERNAL FIRE-FIGHTING EQUIPMENT

Fi-Fi Notation	Main Engine Driven
Fi-Fi Monitors	Fi-Fi Monitor, 600 m ³ /h, 130 m Throw Length
Fi-Fi Pump	30 m ³ /hr

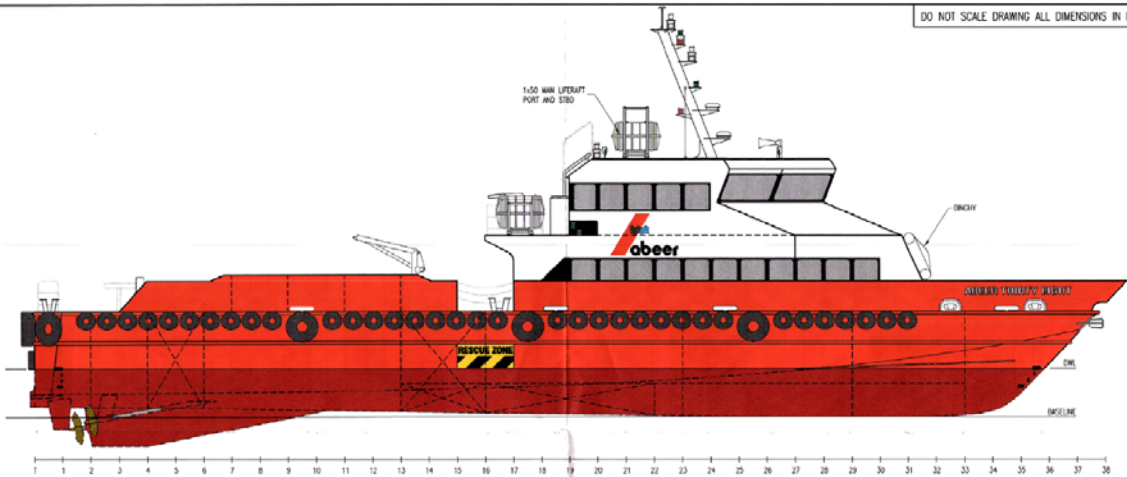
INTERNAL FIRE-FIGHTING & ANTI-POLLUTION EQUIPMENT

Emergency Fire Pump	Yanmar Diesel Engine LA series S/N: C11647, 3.1 kW @ 3600RPM
CO2 Fi-Fi System	4 x Fixed CO2 System for Engine Room
Fire Detection & Alarm	FST 851 R

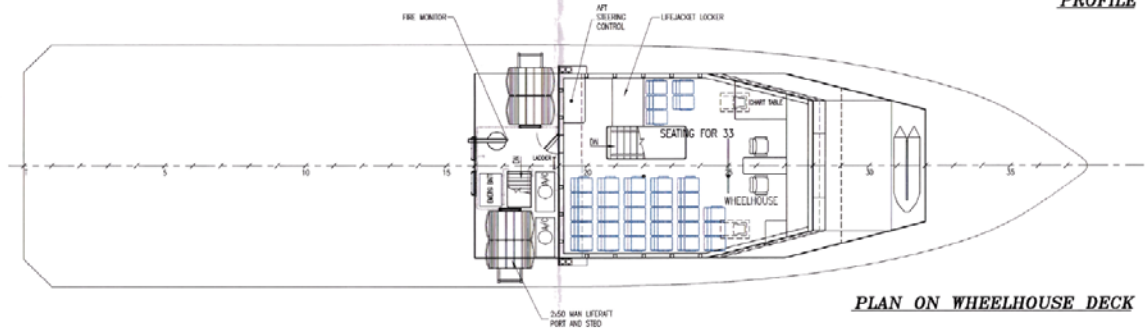
LIFE-SAVING EQUIPMENT

Life Rafts	6 x 50 men, SOLAS Compliant
------------	-----------------------------

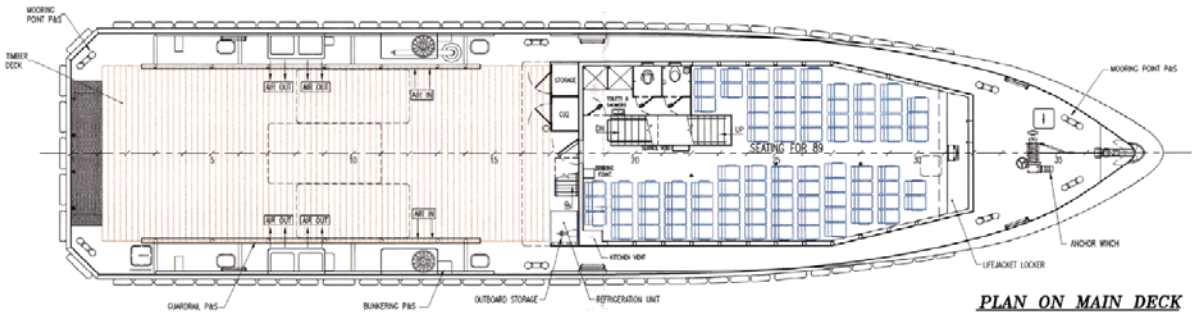
DO NOT SCALE DRAWING ALL DIMENSIONS IN MILLIMETERS U.O.N.



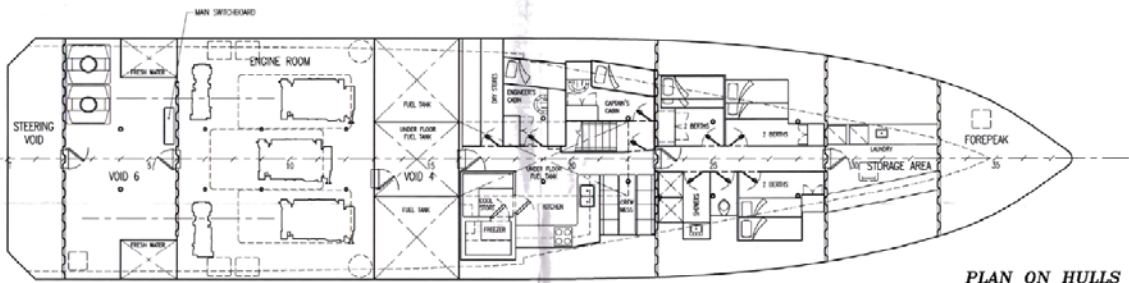
PROFILE



PLAN ON WHEELHOUSE DECK



PLAN ON MAIN DECK



PLAN ON HULLS

PRINCIPLE PARTICULARS

Length Overall	- 34.0m
Length on Waterline	- 31.3m
Beam (Moulded)	- 8.0m
Hull Depth	- 3.5m
D.W.L.	- 1.60m
Diesel Fuel	- 50000L
Fresh Water	- 10000L
Industrial Personnel	- 122
Crew (total)	- 8

<p>WaveMaster INTERNATIONAL</p> <p>77 Gulf Way, Northcote 3108 Victoria Australia Telephone: 61 61 9410 1422 Fax: 61 61 9410 2089 E.M.B. 000 180 204 E-MAIL: general@wavemaster.com.au Website: www.wavemaster.com.au</p>		<p>This drawing and the data contained herein is not to be reproduced, copied or modified in whole or part without written permission from WaveMaster International. ALL RIGHTS RESERVED.</p>												
<p>Project: Yard 180 34m WORK BOAT</p> <p>Drawing Title: GENERAL ARRANGEMENT</p>	<p>Scale: 1:75</p> <p>Sheet Size: A1</p>	<table border="1"> <tr> <th>Rev</th> <th>Description</th> <th>Drawn</th> <th>Set</th> <th>Chk App</th> <th>Des App</th> </tr> <tr> <td>1</td> <td></td> <td></td> <td></td> <td></td> <td></td> </tr> </table>	Rev	Description	Drawn	Set	Chk App	Des App	1					
Rev	Description	Drawn	Set	Chk App	Des App									
1														

828