



EXPRESS 82

Fast Utility Craft/ Crewboat

PRINCIPAL PARTICULARS

Year Built	2014
Place Built	Indonesia, Batam
Design	Penguin Shipyard Int'l
Flag	Panama
Length Overall	38.00 m
Length BP	34.71 m
Breadth Moulded	7.60 m
Depth Moulded	3.65 m
Draft (max)	1.89 m
Freeboard (SLL)	1.41 m
Class	BV
Notation	I-HULL-MACH, Crew Boat, Unrestricted Navigation Max, Significant Wave Ht < 3.0 m
GRT/ NRT	257.00 T / 77.00 T
Deadweight	122.77 T

DECK PARTICULARS

Clear Deck Area	80.00 m ²
Deck Carrying Load	55.00 T
Deck Strength	2.00 T/m ²

PERFORMANCE

Maximum Speed	22 Knots @ 35 DWT
Economic Speed	18 Knots @ 35 DWT

PROPULSION SYSTEM

Main Engines	3 x Cummins KTA38-M2, 1350 BHP, 1007 kW @ 1900 RPM, Total 4050 BHP
Auxiliary Engines	3 x Cummins 6BT5.9-DM1, 80 kW @ 15/220/3phase/50Hz
Emergency Generator	DENKO Portable Air - Cooled Diesel
Bow Thruster	75 kW Electro Hydraulic, 100 HP, Hoyer HCM2-250 MI-4, 0.9 T Thrust
Propellers	3 x Fixed Pitch Propellers, 5-blade
Steering Gear System	2 x Duplex Electro Hydraulic Pump System
Rudder	2 x MENCAST

TANK CAPACITIES

Fuel Oil	68.77 m ³
Fresh Water	30.92 m ³

CARGO DISCHARGE CAPACITIES

Fuel Oil Pump	23 m ³ /hr, TECO 7.5 HP 5.5kW
Fresh Water Pump	Nil
Bilge	Nil

DECK EQUIPMENT

Anchor Windlass c/w Bow	Hypac Electro Hydraulic Winch c/w Wire Rope, Chain & Single Anchor
Crane	Rescue Boat Crane 350 Kg



ACCOMMODATION

Passenger Seats	30
Crew	1 x 1, 6 x 2, 1 x 3 = 16

EXTERNAL FIRE-FIGHTING EQUIPMENT

Fi-Fi Notation	Equivalent to 1/4 Fi-Fi System c/w Water Spray
Fi-Fi Monitors	600 m ³ /h, 100 m Throw Length
Fi-Fi Pump	600 m ³ /hr Head SFP 250x350xP
Oil Dispersant System	Inductor, Propotional Pump Sevenska Skum AB

INTERNAL FIRE-FIGHTING & ANTI-POLLUTION EQUIPMENT

Emergency Fire Pump	Matsuka / Yanmar, 30 m ³ / hr @ 35 m head
CO2 Fi-Fi System	Fixed CO2 System for Engine Room
Fire Detection & Alarm	Optical Smoke, Multi-Sensor Smoke & Heat Detector

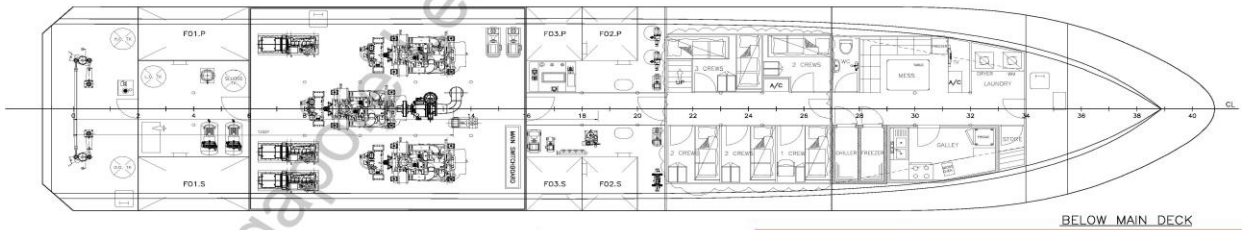
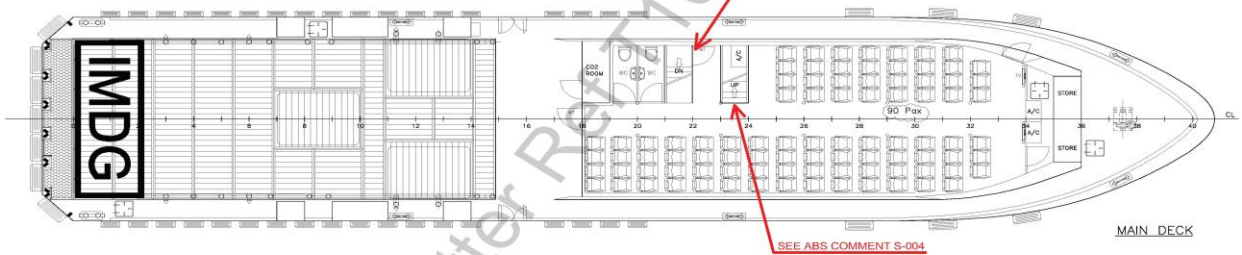
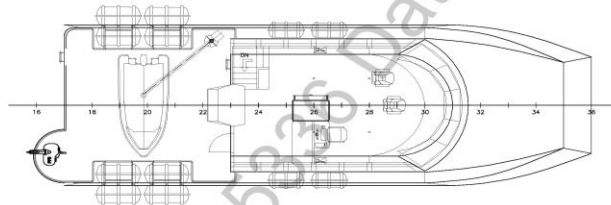
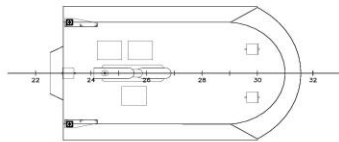
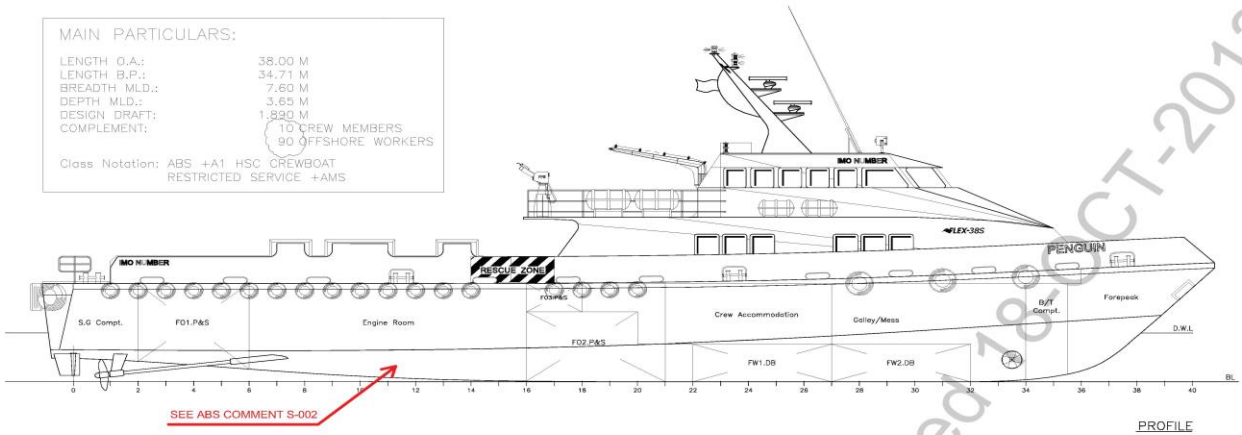
LIFE-SAVING EQUIPMENT

Life Rafts	10 x 25 men, SOLAS Compliant
Rescue Boat c/w Davit	Nil

MAIN PARTICULARS:

LENGTH O.A.: 38.00 M
 LENGTH B.P.: 34.71 M
 BREADTH MLD.: 7.60 M
 DEPTH MLD.: 3.65 M
 DESIGN DRAFT: 1.850 M
 COMPLEMENT: 10 CREW MEMBERS
 90 OFFSHORE WORKERS

Class Notation: ABS +A1 HSC OREBOAT
 RESTRICTED SERVICE +AMS



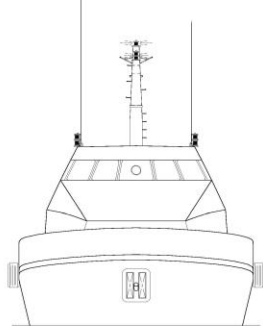
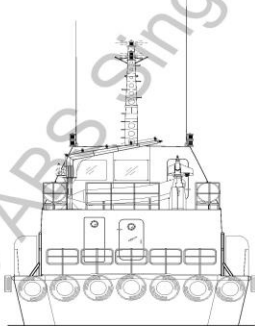
- DOOR AT FR.34, BELOW MAIN DECK, TO OPEN IN DIRECTION OF ESCAPE.
 - EFFICIENT MEANS OF DRAINAGE TO BE PROVIDED FOR DECKHOUSE AT MAIN DECK.

REVIEWED
 Details of this review are as indicated in the ABS Letter

AS AMENDED BY ENGINEER



SEE ABS LETTER FOR COMMENTS



PROJECT:	FLEX-385(H221-222)		
TITLE:	GENERAL ARRANGEMENT		
PENGUIN SHIPYARD INTERNATIONAL PTE LTD 18 Tuas Basin Link, Singapore 638784 Tel: 68628322 Fax: 68622150			
This drawing and the information contained herein is supplied on the understanding that they are the exclusive property of Penguin Shipyards International Pte Ltd. They must not be used or reproduced in whole or in part, without permission in writing.			
DRAWN:	ZH	DATE:	01,AUG,2011
CHECKED:	PATRICK	DATE:	08,AUG,2011
APPROVED:	PATRICK	DATE:	20,AUG,2011
DRAWING No.:	PSI-H191-G-01	SIZE:	A1
		SCALE:	1:75
		REVISION:	A
		SHEET:	1 OF 1