



EKSPRES 93

Fast Utility Craft/ Crewboat

PRINCIPAL PARTICULARS

Year Built	2015
Place Built	Batam, Indonesia
Design	Flex - 40S, Penguin Shipyard Int'l
Flag	Malaysia
Length Overall	40.00 m
Length BP	36.51 m
Breadth Moulded	7.60 m
Depth Moulded	3.65 m
Draft (max)	1.90 m
Freeboard (SLL)	1.39 m
Class	BV
Notation	I, Hull, Mach, Crewboat, Sea Area 3, Max significant wave ht > 3.0 m
GRT/ NRT	272.00 T / 81.00 T
Deadweight	127.31 T

DECK PARTICULARS

Clear Deck Area	100.00 m ²
Deck Carrying Load	60.00 T
Deck Strength	2.00 T/m ²

PERFORMANCE

Maximum Speed	28 Knots @ 18 T/24 hrs @ 35 DWT
Economic Speed	25 Knots @ 16 T/24 hrs @ 35 DWT

PROPULSION SYSTEM

Main Engines	2 x Cummins KTA38M2 & 1 x KTA50M2 (IMO Tier II), 2 x 1350 BHP & 1 x 1800 BHP @ 1900 RPM, Total 4500 BHP
Auxiliary Engines	3 x Cummins 6CT8.3D(M), 90 kW @ 1500 RPM
Portable Generator	Denko KDE3300, 3 kW @ 50 Hz, 15/230V
Emergency Generator	Nil
Bow Thruster	Electro Hydraulic @ 100 KW, 1.4 T Thrust
Propellers	3 x Fixed Pitch Propellers, 5-blade
Steering Gear System	Electro hydraulic RAM
Rudder	2 x Balanced rudder

TANK CAPACITIES

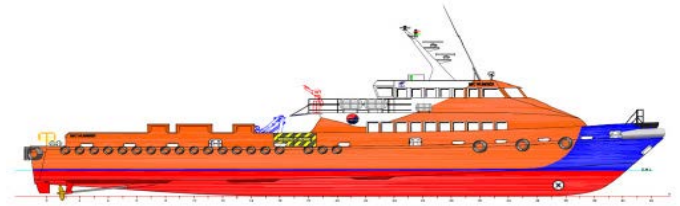
Fuel Oil	67.74 m ³
Fresh Water	28.90 m ³

CARGO DISCHARGE CAPACITIES

Fuel Oil Pump	23.00 m ³ /hr
Fresh Water Pump	Nil
Bilge	Nil

DECK EQUIPMENT

Anchor Windlass c/w Bow	Hypac Electro Hydraulic Winch c/w Wire Rope, Chain & Single Anchor
Crane	Palfinger PK4501, 0.5 T @ 6 m radius



ACCOMMODATION

Passenger Seats	100
Crew	2 x 1, 4 x 2 = 10

EXTERNAL FIRE-FIGHTING EQUIPMENT

Fi-Fi Notation	Equivalent to 1/4 FIFI System c/w Water Spray
Fi-Fi Monitors	600 m ³ /hr @ 100 m head
Fi-Fi Pump	600 m ³ /hr @ 130m head
Oil Dispersant System	1 V-Jet Nozzles (P&S), 200 L

INTERNAL FIRE-FIGHTING & ANTI-POLLUTION EQUIPMENT

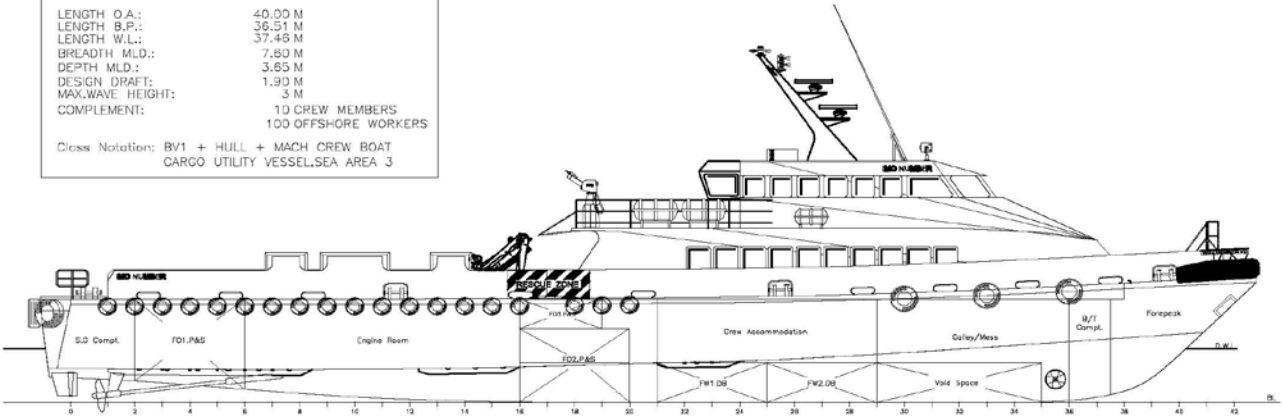
Emergency Fire Pump	Matsuka/Yanmar, 30m ³ /hr @ 35 m head
CO2 Fi-Fi System	Fixed CO2 System for Engine Room
Fire Detection & Alarm	Apollo

LIFE-SAVING EQUIPMENT

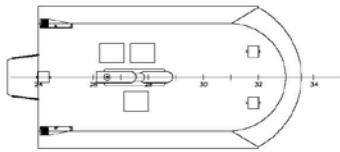
Life Rafts	8 x 25, 2 x 10 men, SOLAS Compliant
Rescue Boat c/w Davit	1 x 6 men, 25 HP/20, Non-SOLAS Compliant

LENGTH O.A.: 40.00 M
 LENGTH B.P.: 38.51 M
 LENGTH W.L.: 37.48 M
 BREADTH MLD.: 7.80 M
 DEPTH MLD.: 3.85 M
 DESIGN DRAFT: 1.90 M
 MAX. WAVE HEIGHT: 3 M
 COMPLEMENT: 10 CREW MEMBERS
 100 OFFSHORE WORKERS

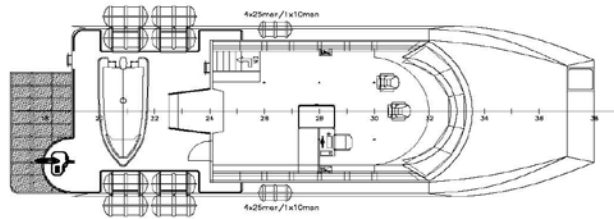
Class Notation: BV1 + HULL + MACH CREW BOAT
 CARGO UTILITY VESSEL, SEA AREA 3



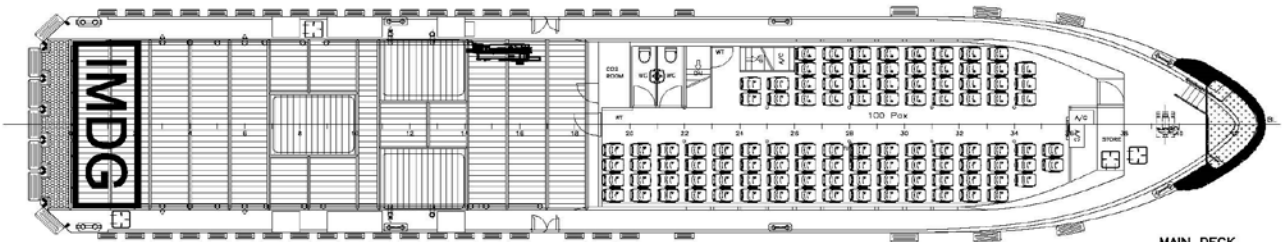
PROFILE



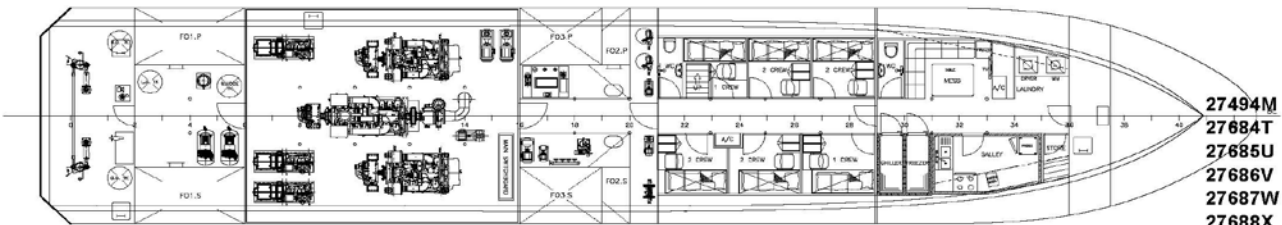
WHEELHOUSE TOP



WHEELHOUSE PLAN



MAIN DECK



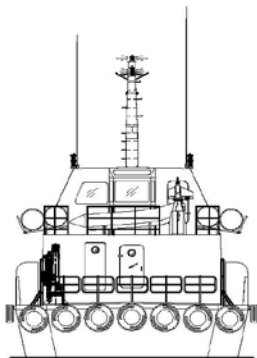
BELOW MAIN DECK

- 27494M
- 27684T
- 27685U
- 27686V
- 27687W
- 27688X
- 27689Y
- 27695F

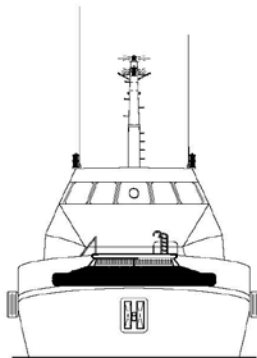
BUREAU VERITAS Section ...
VU avec observations

Singapore, 03-Aug-2014

[Electronic document]
The plan approval office
SPO/14/02904



STERN VIEW



FRONT VIEW

PROJECT:	FLEX-40S (H255,260,261,263,264,265,268,278)		
TITLE:	GENERAL ARRANGEMENT		
 PENGUIN SHIPYARD INTERNATIONAL PTE LTD 18 Tuas Basin Link, Singapore 638784 Tel: 68628322 Fax: 68622150			
<small>This drawing and the information contained herein is supplied on the understanding that they are the exclusive property of Penguin Shipyards International Pte Ltd. They must not be used or reproduced in whole or in part, without permission in writing.</small>			
DRAWN:	STEPHEN	DATE:	27.MAR.2014
CHECKED:	YAW JH	DATE:	28.MAR.2014
APPROVED:	CHEW KH	DATE:	28.MAR.2014
DRAWING No.:	PSI-H255-0-01	SHEET:	1 OF 1