

# SAMSON 101

Multicat / 10.5T Bollard Pull

## GENERAL

Year Built	2005
Built at	Swissco Offshore PTE LTD
Country	Singapore
Designed By	Shiptechnik Pte Ltd
Classification	GL
Flag	Panama
Port of Registry	Panama
Official Number	9375094
Call Sign	HP4783

## PERFORMANCE

Speed	5 knots
Bollard Pull	10.5T

## DIMENSIONS

Length Overall	26m
Breadth	11m
Maximum Draft	2.5m
Gross Tonnage	218T

## PROPULSION

Main Engines	2 x Caterpillar 3412
Total Output	2 x 720hp
Gearboxes	Hangzou Fada

## NAVIGATIONAL AND COMMUNICATION EQUIPMENT:

MMSI	3273514000
Radar	JCR JMA-2300 Series Rasta Scan Radar
Plotter	Furuno Gp-7000
GPS	Navigation J-Nav 500
Magnetic Compass	Silva Type - 150
GPS Compass	Koden GPS Compass Model FGC-1.MU
Fish Finder	JRC Color Fish Finder FF60
VHF	Icom VHF marine Radio's IC-M412 & IC-M505
Radio Telephone	JRC JSB-196 SSB Radio Telephone
Portable VHF	Uniden Atlantis 260 Hand Held VHF Marine Radio's
Loud Hailer	Ray Marine Loud Hailer Ray- 430
Intercom System	SCs Sea Mate
Auto Pilot	TMQ AP4
Navtex Receiver	JRC NC-333
AIS	Furuno Class B AIS transponder FA-50

## ACCOMODATION

Cabins	4
Type	3 x Cabin with 2 Bunks & 1 Cabin with x 4 Bunks
Maximum Crew	10

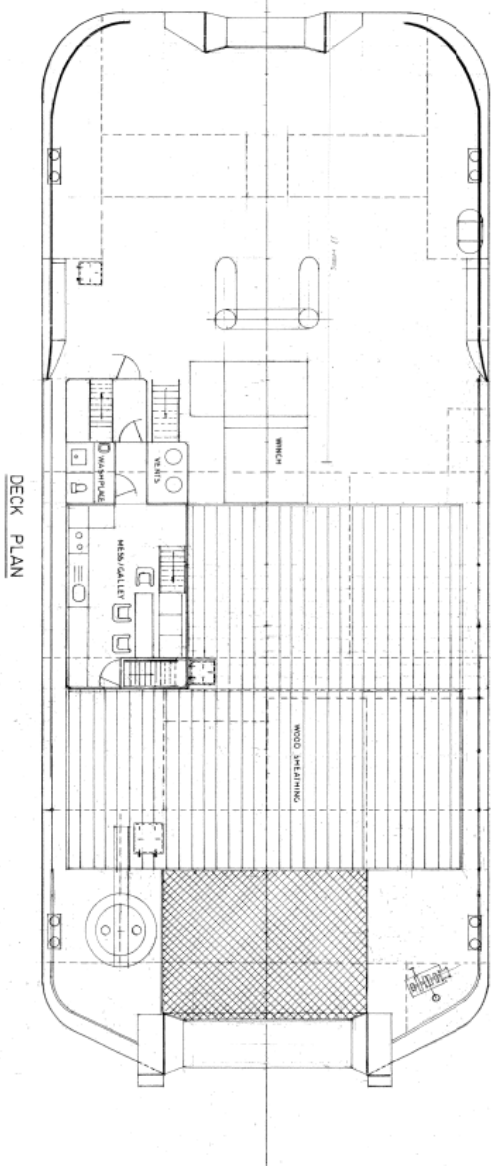
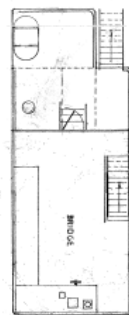
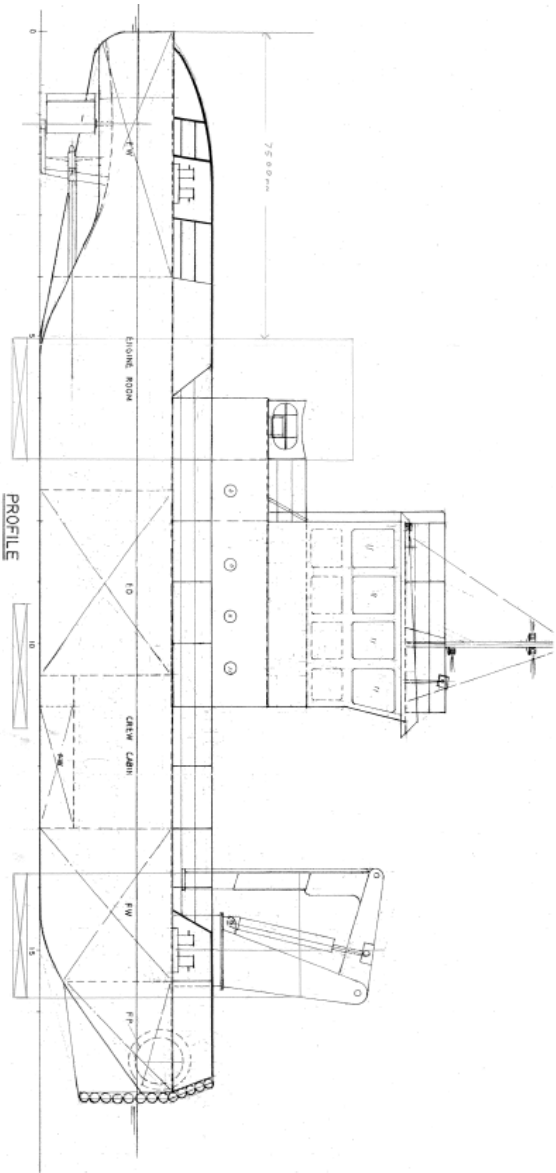


## TANK CAPACITIES

Fuel Oil	150m <sup>3</sup>
Fresh Water	320m <sup>3</sup>
Dirty Oil	8m <sup>3</sup>
Black Water	3m <sup>3</sup>
Ballast Water	9m <sup>3</sup>
Fuel	392m <sup>3</sup>

## AUXILIARIES

Diesel Generator	Cummins 6Bt 5.9
Generators	PT & STB 2 x 85Kva



**MAIN PARTICULARS**

LENGTH O/A	26.00 M
BREADTH MLD	11.00 M
DEPTH	3.25 M
DESIGNED	2.50 M
COMPLEMENT	10
MAIN ENGINES	2 X CAT 3412/DIE
	720 HP AT 1800 RPM
DIESEL FUEL OIL	90 M <sup>3</sup>
FRESH WATER	45 M <sup>3</sup>

SHIPTECHNIK SERVICES PTE LTD		
OWNERS SWISSCO OFFSHORE PTE LTD		
TITLE:		
26 M TWIN SCREW TUG/WBOAT		
GENERAL ARRANGEMENT		
DRAWN: ST	DATE: 11.2003	S921-H1
SCALE: 1:50		