



EKSPRES 80

Fast Utility Craft/ Crewboat

PRINCIPAL PARTICULARS

Year Built	2014
Place Built	Indonesia, Batam
Design	Penguin Shipyard Int'l, Flex - 40M
Flag	Panama
Length Overall	40.00 m
Length BP	36.51 m
Breadth Moulded	7.60 m
Depth Moulded	3.65 m
Draft (max)	1.89 m
Freeboard (SLL)	1.40 m
Class	BV
Notation	BV1, HULL, MACH, Crewboat, Cargo Utility Vessel, Coastal Area 3
GRT/ NRT	266.00 T / 80.00 T
Deadweight	131.71 T

DECK PARTICULARS

Clear Deck Area	100.00 m ²
Deck Carrying Load	60.00 T
Deck Strength	2.00 T/m ²

PERFORMANCE

Maximum Speed	25 Knots @ 14.5 T/24 Hrs @ 35 DWT
Economic Speed	23 Knots @ 12.5 T/24 Hrs @ 35 DWT

PROPULSION SYSTEM

Main Engines	3 x Baudouin 12M26.6 (IMO Tier II), 1200 BHP @ 1950 RPM, Total 3600 BHP
Auxiliary Engines	2 x Baudouin 6W105M, 92 kW @ 1500 RPM
Portable Generator	Denko KDE3300I, Air-cooled Diesel Engine
Bow Thruster	Fluidmeccanica HMM-650, 0.9 T
Propellers	3 x Fixed Pitch Propellers, Mencast 5-Blade
Steering Gear System	2 x Duplex Electro Hydraulic RAM
Rudder	2 x Balanced Rudder

TANK CAPACITIES

Fuel Oil	86.28 m ³
Fresh Water	29.38 m ³ @ 95% fill

CARGO DISCHARGE CAPACITIES

Fuel Oil Pump	23.00 m ³ /hr
Fresh Water Pump	Nil
Bilge	Nil

DECK EQUIPMENT

Anchor Windlass c/w Bow	Hypac Electro Hydraulic Winch c/w Wire Rope, Chain & Single Anchor
Crane	Palfinger PK4501, 0.5 T @ 6 m



ACCOMMODATION

Passenger Seats	70
Crew	1 x 1, 3 x 2, 1 x 3 = 10

EXTERNAL FIRE-FIGHTING EQUIPMENT

Fi-Fi Notation	Equivalent to 1/4 FiFi System c/w Water Spray
Fi-Fi Monitors	600 m ³ /hr, 115 m head
Fi-Fi Pump	600 m ³ /hr
Oil Dispersant System	1 V-jet Nozzles (P & S), 200 L Dispersant Tank

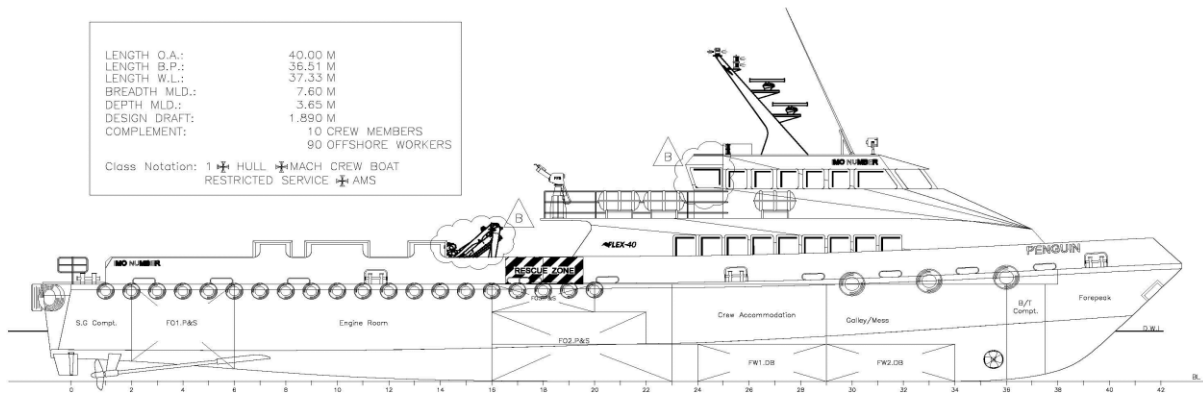
INTERNAL FIRE-FIGHTING & ANTI-POLLUTION EQUIPMENT

Emergency Fire Pump	Matsuka / Yanmar, 30 m ³ /hr @ 35 m head
CO2 Fi-Fi System	Fixed CO2 System for Engine Room
Fire Detection & Alarm	Apollo M8000

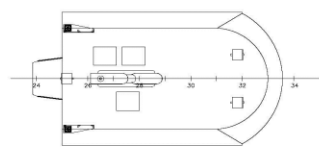
LIFE-SAVING EQUIPMENT

Life Rafts	5 x 25 man / side, SOLAS Compliant
Rescue Boat c/w Davit	1 x 7 men, 25 HP Outboard Engine, Non-SOLAS Compliant

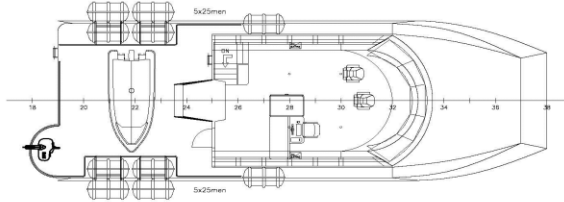
LENGTH O.A.: 40.00 M
 LENGTH B.P.: 36.61 M
 LENGTH W.L.: 37.33 M
 BREADTH MLD.: 7.60 M
 DEPTH MLD.: 3.65 M
 DESIGN DRAFT: 1.890 M
 COMPLEMENT: 10 CREW MEMBERS
 90 OFFSHORE WORKERS
 Class Notation: 1 HULL MACH CREW BOAT
 RESTRICTED SERVICE AMS



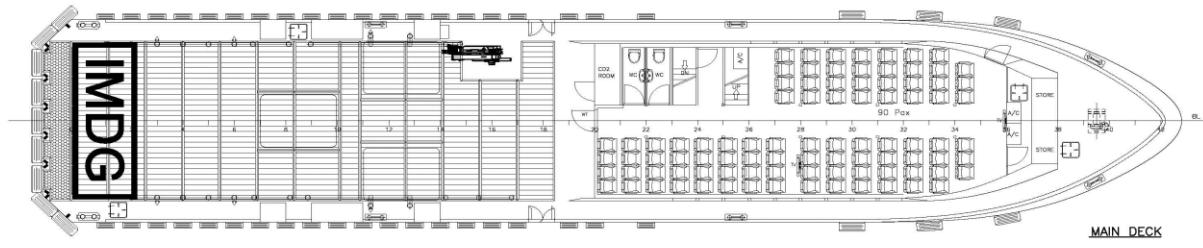
PROFILE



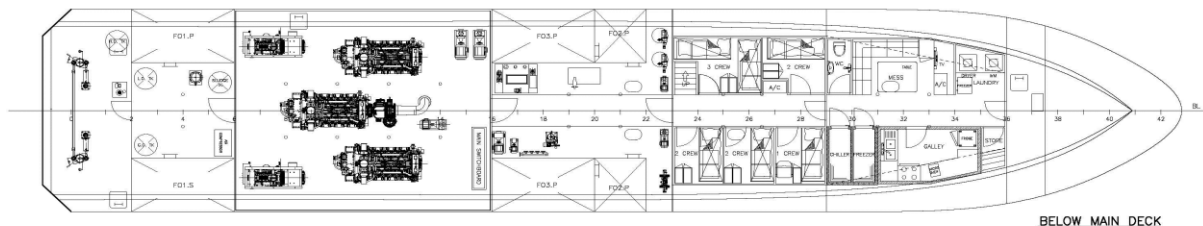
WHEELHOUSE TOP



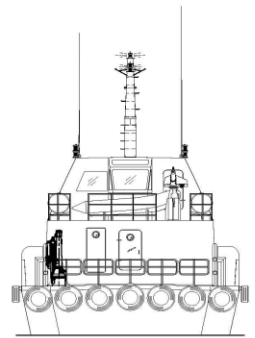
WHEELHOUSE PLAN



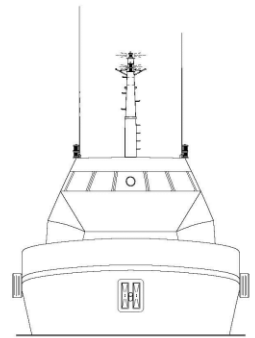
MAIN DECK



BELOW MAIN DECK



STERN VIEW



FRONT VIEW

D	As Built Drawing	Kaspin	14, March, 2014		
REV:	MODIFICATION	DONE	DATE	REMARK	
PROJECT:	FLEX-40 (H223)				
TITLE:	GENERAL ARRANGEMENT				
PENGUIN SHIPYARD INTERNATIONAL PTE LTD 18 Tuas Basin Link, Singapore 638784 Tel: 6828322 Fax: 68622150 <small>This drawing and the information contained herein is supplied on the understanding that they are the exclusive property of Penguin Shipyard International Pte Ltd. They must not be used or reproduced in whole or in part, without permission in writing.</small>					
DRAWN:	JH	DATE:	18.MAY.2013	SIZE:	A1
CHECKED:	THH	DATE:	20.MAY.2013	SCALE:	1:75
APPROVED:	STACY	DATE:	20.MAY.2013	REVISION:	D
DRAWING No:	PSI-H215-G-01			SHEET:	1 OF 1