

# MICLYN 257

## Flat Top Deck Cargo Barge

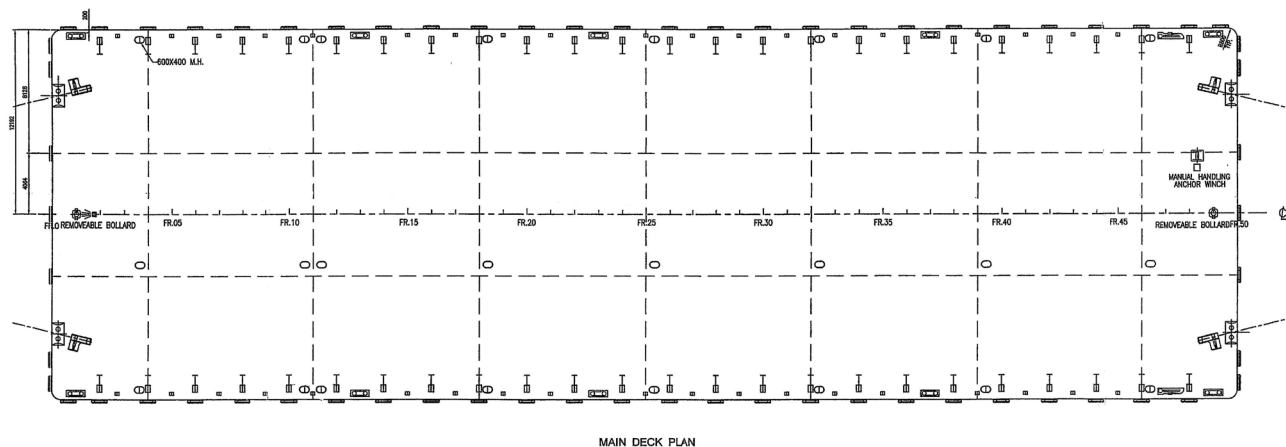
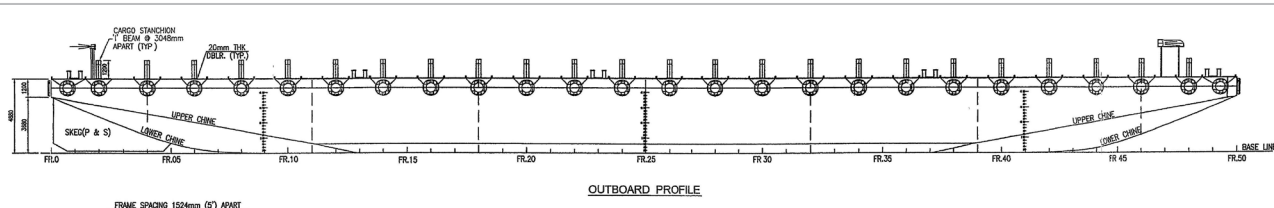
### GENERAL

Year Built	2006
Flag / Port of Registry	Indonesia
Official Number	392595
Class / classification	Bureau Veritas
GRT / NRT	2,220 t / 666 t
Length Overall	250 ft (76.20 m)
Breadth	80 ft (24.38 m)
Depth Loaded	16 ft ( 4.88m)
Draft Loaded	12.5 ft (3.81 m)
Dead Weight	4,900 t (approx.)
Deck Loading	15 t / m <sup>2</sup>
Transverse Bulkhead	Seven (7)
Longitudinal Bulkhead	Two (2)



### DECK EQUIPMENT

Anchor Winch	1 x hand winch
Anchor	1 x 1,000 kg stockless bower anchor
Smit Brackets	4 x smit towing brackets - P&S, fwd and aft
Stanchions	23 stanchions with stay on each side
Navigation Lights	1 set solar type, P&S at fwd and aft
Mooring Bollards	4 sets double mooring bollards each side (deck)
Other	Barge is all welded steel construction with flush Main Deck and Twin Skegs. Hand driven bridle recovery winches (2) fwd / aft



#### PRINCIPAL DIMENSIONS

LENGTH OVERALL	76 200 M (250'-0")
BREADTH MOULDED	24 384 M (80'-0")
DEPTH MOULDED	4 880 M (16'-0")
DRAFT MOULDED	3 800 M (12'-6")
DECK LOADING	15 MT/M <sup>2</sup>

OWNER'S COPY

REVIEWED  
as indicated in  
ABS Letter dated  
21 AUG 2006



NO.	REV.	DESCRIPTION	DATE	BY	CHECKED	APPROVED
1		ISSUED				

GENERAL ARRANGEMENT

SCALE: 1:100

DATE: 21 AUG 2006

Particulars are believed to be correct but not guaranteed. Owners reserve the rights to amend the specifications without notifications. Particulars are entirely without warranty as to correctness and interested parties must inspect vessel's certificates, drawings or physical inspection of vessel.