

MEO MONARCH 2

65M 7145BHP DP2 / Offshore Support Vessel

PRINCIPAL PARTICULARS

Year Built	2015
Place Built	Wuchang Ship Yard, China
Design	Focal Marine & Offshore (Focal 680)
Flag	Indonesia
Length Overall	64.80 m
Length BP	58.50 m
Breadth Moulded	16.00 m
Depth Moulded	6.20 m
Draft (max)	5.00 m
Freeboard (SLL)	1209 mm
Class	BV
Notation	I x Hull x Mach, Tug; Anchor Handling Vessel; Fire Fighting Ship 1; Oil Recovery Ship; Supply Vessel - Oil Product FP > 60°C, LHNS; SP 50, Unrestricted Navigation, x DYNAPOS AM/AT R
GRT/ NRT	2289.00 T / 686.00 T
Deadweight	1786.00 T
Bollard Pull	96.60 T

DECK PARTICULARS

Clear Deck Area	435.00 m ²
Deck Carrying Load	600.00 T
Deck Strength	7.00 T/m ²

PERFORMANCE

Maximum Speed	14 Knots @ 25.00 T/24hrs
Economic Speed	10 Knots @ 12.00 T/24hrs

PROPULSION SYSTEM

Main Engines	2 x Daihatsu 8DKM-28e, 3572 BHP, 2666 kW @ 750 RPM, Total 7145 BHP
Auxiliary Engines	3 x Caterpillar C18, 450 kW @ 1500RPM
Emergency Generator	Cummins QSB7-DM, 99 kW @ 1500 RPM
Shaft Generator	2 x Leroy Somer LSAM 51.2VL90, 1600 kW @ 1500 RPM
Rov Generator	Nil
Bow Thruster	2 x Brunvoll CPP, 10 T Thrust
Stern Thruster	Brunvoll CPP, 10 T Thrust
Propellers	2 x NGC CPP in Kort Nozzles, NCP85
Steering Gear System	2 x Electro Hydraulic Interfaced w/ DP system, 45 deg High Lift "Flap" Type
Rudder	2 x Electro Hydraulic Interfaced w/ DP system, 45 deg High Lift "Flap" Type

TANK CAPACITIES

Fuel Oil	592.10 m ³
Fresh Water	367.00 m ³
Drill Water / Ballast	584.80 m ³
Liquid Mud / Brine	380.30 m ³
Base Oil	378.60 m ³
Bilge	13.20 m ³
Dry bulk	150.00 m ³ , 4 x 37.50 m ³ per tank



CARGO DISCHARGE CAPACITIES

Fuel Oil Pump	100 m ³ /hr @ 60 m head
Fresh Water Pump	100 m ³ /hr @ 70 m head
Drill Water Pump	100 m ³ /hr @ 70 m head
Liquid Mud Pump	2 x 70 m ³ /hr @ 70 m head
Brine Pump	2 x 70 m ³ /hr @ 70 m head
Bilge/Ballast/Fire/GS	100 m ³ /hr @ 70 m head
Dry Bulk Compressor	2 x 780 m ³ /hr @ 80 PSI

DP SYSTEM

DP2, Kongsberg, 2 DGPS, Fanbeam, 3 Anemometers, 3 Motions Sensors, Independent Joystick

DECK EQUIPMENT

Anchors & Chain	2 x AC14 HHP Stockless Anchor, 1940 kg each
Tugger Winch	2 x Electro Hydraulic 10 T @ 15 m/min, Drum Capacity 250 m x 22 mm dia
Capstan	2 x Electro Hydraulic 10 T @ 15 m/min
Anchor Windlass c/w Bow	Mac Gregor Electro hydraulic c/w Double gypsies & warping ends
Crane	SWL 2 T @ 15 m radius

ANCHOR HANDLING & TOWING EQUIPMENT

AH/Towing Winch	Electro-Hydraulic Double Drum Waterfall
AH Drum Capacity	1500 m x 64 mm
Towing Drum Cap.	1500 m x 64 mm
Spare Reel Drum Cap.	1500 m (L) x 64 mm (Dia)
Line Pull @ First Layer	150 T at low speed
Brake Holding	250 T
Towing Pin	2 x SWL 250 T
Shark Jaw	SWL 250 T
Stern Roller	SWL 250 T, 4.4 m (L) x 1.7 m (Dia)

ACCOMMODATION

Berths	8 x 4, 5 x 2, 8 x 1 Berths
Total Pax	50

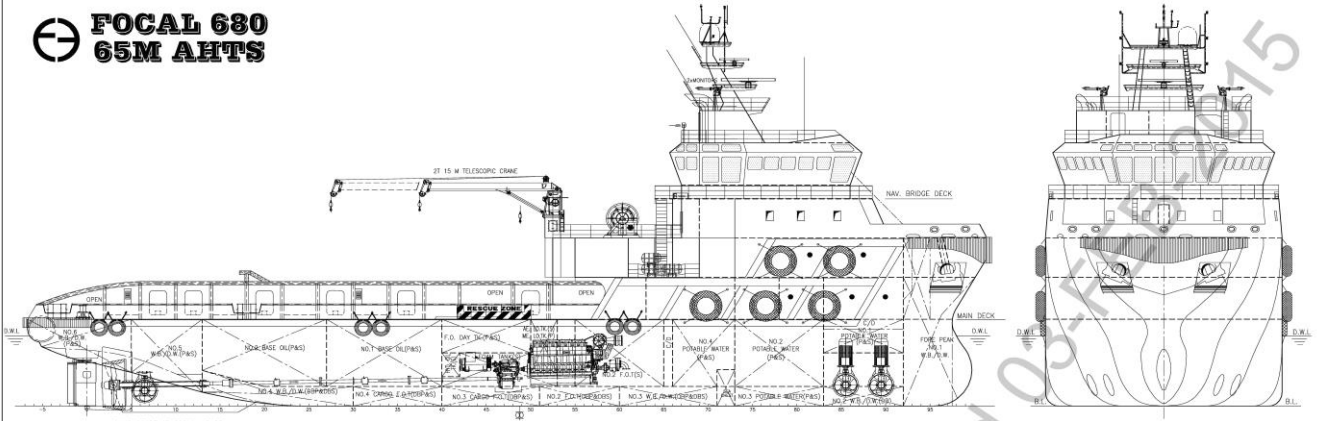
EXTERNAL FIRE-FIGHTING EQUIPMENT

Fi-Fi Notation	Fire Fighting Ship 1 w/ Fixed Water Spray System
Fi-Fi Monitors	2 x 1200 m ³ /hr, 120 m Throw Length
Fi-Fi Pump	2 x 1860 m ³ /hr

LIFE-SAVING EQUIPMENT

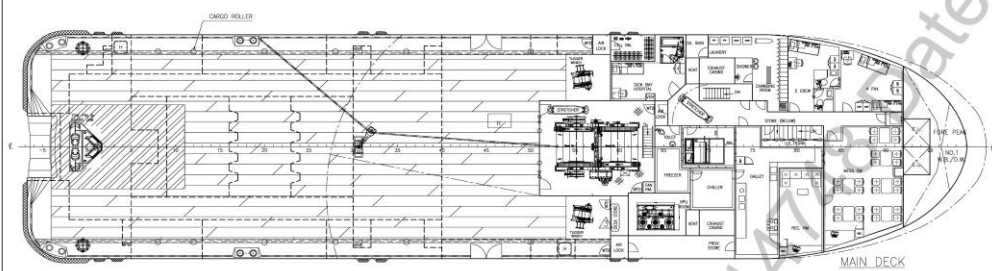
Life Rafts	6 x 25 men, SOLAS Compliant
Rescue Boat c/w Davit	1 x 6 men, 21.70 kW @ 1095 RPM, Inboard Eng, 50 L Fuel, SOLAS Compliant

FOCAL 680 65M AHTS

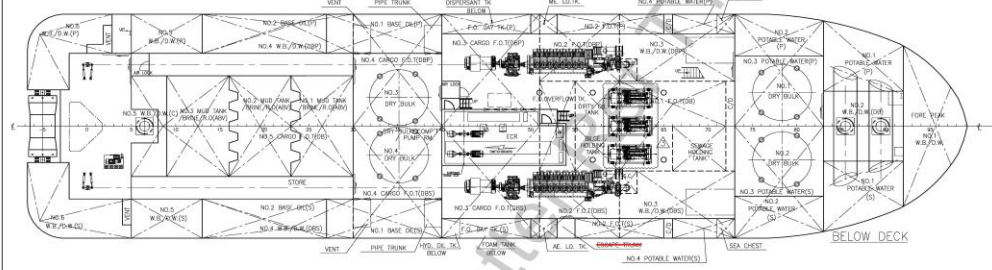
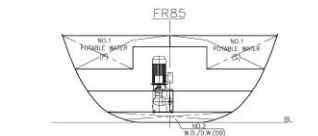
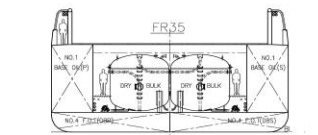
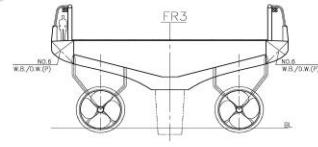


OUTBOARD PROFILE

FRONT VIEW



MAIN DECK
(2 CREW + 4 PAX)



BELOW DECK

PRINCIPAL PARTICULARS

LENGTH OA	64.80 M
LENGTH BP	58.50 M
BEAM MLD.	16.00 M
DEPTH MLD.	6.20 M
DRAFT DESIGNED	5.00 M
DRAFT SCANTLING	5.20 M
COMPLEMENT	50 MEN

MAIN ENGINE

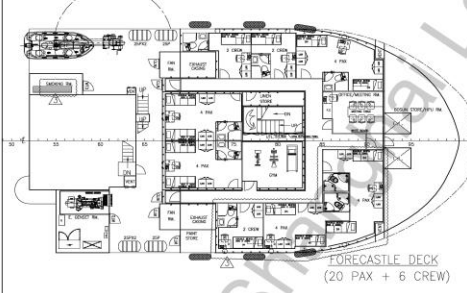
MAIN ENGINE	2 x 2,666 KW
TRIAL SPEED	13 KTS
BOLLARD PULL	90 T

APPROXIMATE CARGO CAPACITIES

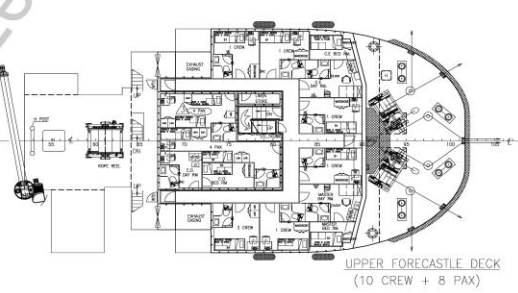
DEADWEIGHT	1,600 T
CARGO DECK AREA	435 M ² @ 7 T/M ²
DECK CARGO	600 T

SHIP F.O./CARGO F.O.

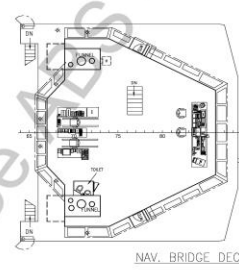
SHIP F.O./CARGO F.O.	550 M ³
DW/WB	500 M ³
BASE OIL	350 M ³
POTABLE WATER	300 M ³
MUD/BRINE/R.O.	370 M ³
CEMENT	150 M ³



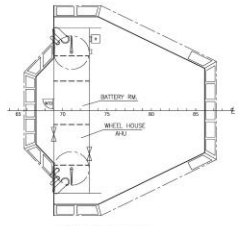
FORECASTLE DECK
(20 PAX + 6 CREW)



UPPER FORECASTLE DECK
(10 CREW + 8 PAX)



NAV. BRIDGE DECK



COMPASS DECK

- CLASS: ABS ● A1 @ OFFSHORE SUPPORT VESSEL,
(AH, TOW,
SUPPLY-HULL,
FFV 1,
OSR-C1)
SPS
● AMS
● SPS-2
● (900)

THIS DOCUMENT AND THE CONTENTS ARE COPYRIGHT AND REMAIN PROPERTY OF FOCAL MARINE & OFFSHORE. THEY MUST NOT BE COPIED IN WHOLE OR IN PART TO ANY THIRD PARTY FOR ANY PURPOSE WITHOUT PRIOR WRITTEN PERMISSION FROM FOCAL MARINE & OFFSHORE. THE RECEIPT OF THIS DOCUMENT IMPLIES ACCEPTANCE OF THIS CONDITION.

3	REVISED AS PER OWNER COMMENTS	ZF	JAN-17-2015
REV. NO.	REVISION DESCRIPTION	BY	DATE
OWNER	MILCLYN EXPRESS OFFSHORE		
BUILDER	WUCHANG SHIPBUILDING INDUSTRY		
PROJECT	64.8M ANCHOR HANDLING TUG / OIL RECOVERY / SUPPLY VESSEL "FOCAL 680"		
APPROVE	ENG TITLE	JOB NO.	P-1777
DESIGNER		DWG NO.	P-1777-001
CHECKER		SCALE	1:150 (A1)
DRAWER		CLASS	AMS
FOCAL MARINE & OFFSHORE			
SHANGHAI TEL: 86-21-58705786 SINGAPORE TEL: 65-68481387			
FAX: 86-21-50313265 FAX: 65-69481381			

See Also Shipyard Letter 173747

