



EXPRESS 58

Fast Utility Craft/ Crewboat

PRINCIPAL PARTICULARS

Year Built	2007
Place Built	Singapore
Design	FLEX 36, Penguin Shipyard Int
Flag	Panama
Length Overall	36.00 m
Length BP	32.50 m
Breadth Moulded	7.60 m
Depth Moulded	3.65 m
Draft (max)	1.88 m
Freeboard (SLL)	1.8m
Class	DNV.GL
Notation	I, Hull, Mach, Crew Boat
GRT/ NRT	239.00 T / 72.00 T
Deadweight	113.00 T

DECK PARTICULARS

Clear Deck Area	88.00 m ²
Deck Carrying Load	32.00 T
Deck Strength	2.00 T/m ²

PERFORMANCE

Maximum Speed	22 Knots @ 14.08 T/24 hrs
Economic Speed	18 Knots @ 12.25 T/24hrs

PROPULSION SYSTEM

Main Engines	3 x Cummins, KTA 38 M2, 1350 BHP, 1900 RPM, Total 4050 BHP, 2982 kW
Auxiliary Engines	2 x Cummins 91kW, 220V, 60 HZ, 3 Phase
Portable Generator	Nil
Emergency Generator	Nil
Bow Thruster	Hydraulic Pump Teco, 75 kW, 1475 RPM
Propellers	Triple Screw, Fixed Pitch Propellers
Steering Gear System	2 Units
Rudder	2 Units

TANK CAPACITIES

Fuel Oil	52.00 m ³
Fresh Water	27.00 m ³

CARGO DISCHARGE CAPACITIES

Fuel Oil Pump	30 m ³ /hr
Fresh Water Pump	30 m ³ /hr
Bilge	25 m ³ /hr

DECK EQUIPMENT

Anchor Windlass c/w Bow	18 mm Steel Wire rope c/w Thimble Eye, Anchor Chain & Winch
-------------------------	---



ACCOMMODATION

Passenger Seats	90 seats
Crew	2 x 4, 1 x 2, 2 x 1, 2 x 4 = 20

EXTERNAL FIRE-FIGHTING EQUIPMENT

Fi-Fi Notation	Equivalent to 1/4 FiFi
Fi-Fi Monitors	600 m ³ /hr, 130 m Throw Length
Fi-Fi Pump	600 m ³ /hr (GM12V-71T1 Engine)
Oil Dispersant System	Nil

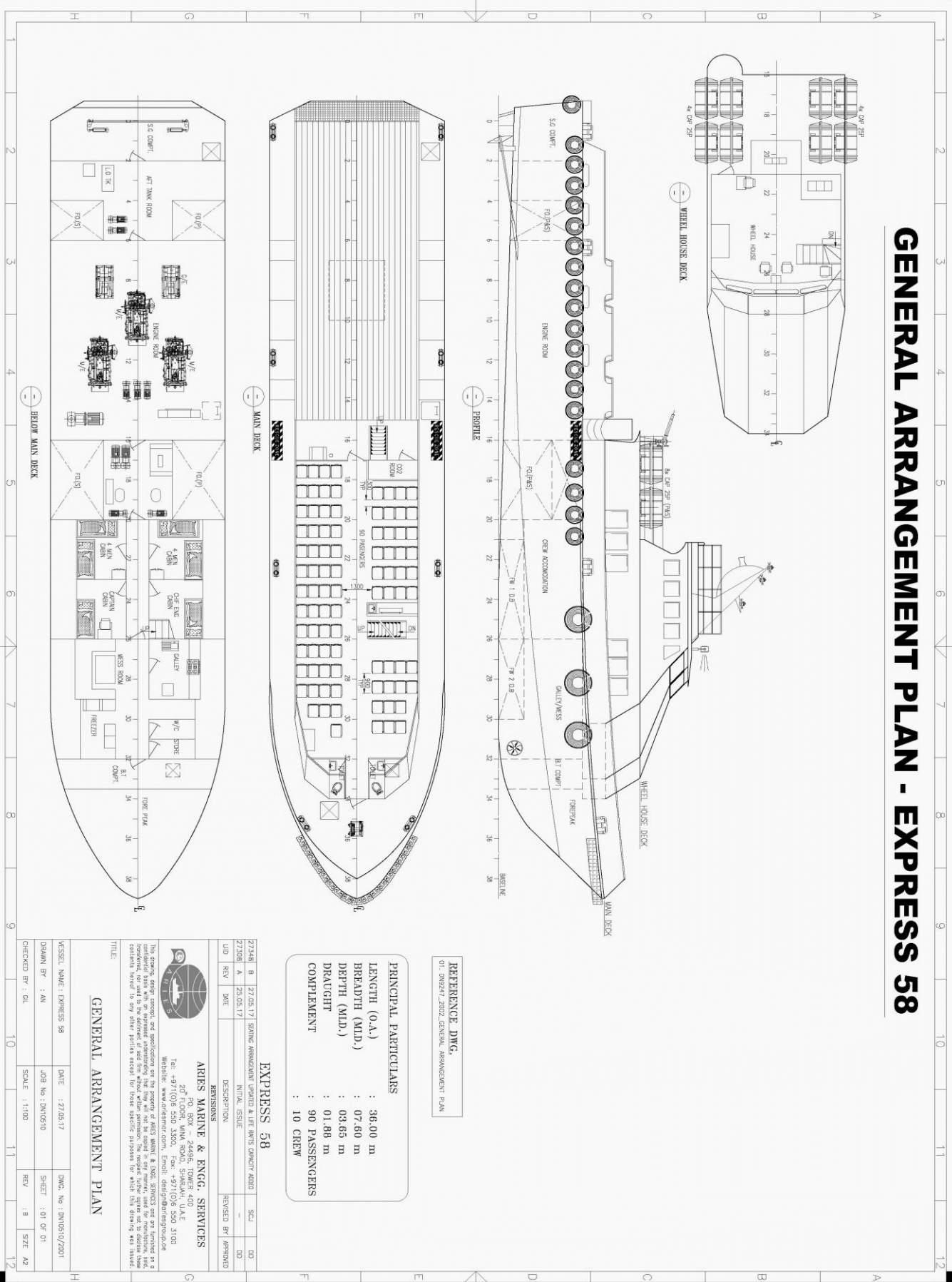
INTERNAL FIRE-FIGHTING & ANTI-POLLUTION EQUIPMENT

Emergency Fire Pump	Azcue, CA 50/3-A, 22 m ³ /hr, 15m
CO2 Fi-Fi System	Kill Fire, NK Fixed CO2
Fire Detection & Alarm	Optical Smoke, Multi-Sensor Smoke & Heat Detector

LIFE-SAVING EQUIPMENT

Life Rafts	8 x 25 men, SOLAS Compliant
------------	-----------------------------

GENERAL ARRANGEMENT PLAN - EXPRESS 58



REFERENCE DWG.
01: DWG#7-2002 GENERAL ARRANGEMENT PLAN

PRINCIPAL PARTICULARS

LENGTH (O.A.)	: 36.00 m
BREADTH (MID.)	: 07.60 m
DEPTH (MID.)	: 03.65 m
DRAUGHT	: 01.88 m
COMPLEMENT	: 90 PASSENGERS
	: 10 CREW

EXPRESS 58

UID	REV	DATE	DESCRIPTION	REVISIONS	REMOVED BY	APPROVED
Z7148	B	27.05.17	EXHIBIT ARRANGEMENT UPDATED & LIFE RAFTS CHANGED ADDED			DD
Z7129	A	25.05.17	INITIAL ISSUE			DD

ARRIS MARINE & ENGG. SERVICES
 PO. BOX - 24466, TOWER 400
 20TH FLOOR, MAIN ROAD, SHAHJAH, UAE
 Tel: +971(0)5 550 3300, Fax: +971(0)5 550 3100
 Website: www.arriemarine.com, Email: enquiry@arriemarine.com

The Designer, Manufacturer and Approver of this plan warrant that the information contained herein is true and correct to the best of their knowledge and belief and that the information is not intended to be used for any other purpose. The Designer, Manufacturer and Approver shall not be liable for any loss or damage caused by the use of this plan for any purpose other than that for which it was intended.

GENERAL ARRANGEMENT PLAN

VESSEL NAME: EXPRESS 58	DATE: 27.05.17	DWG. No: DM0310/2001
DRAWN BY: AN	JOB No: DM0510	SHEET: 01 OF 01
CHECKED BY: GL	SCALE: 1:100	REV: 1 B SIZE: A2

FILENAME: DM0310_2001_GENERAL ARRANGEMENT PLAN_REV1.DWG