

RESOLUTION

70M DP2 5000BHP ROV Support Vessel



PRINCIPAL PARTICULARS

| | |
|-----------------|---|
| Year Built | 2013 |
| Place Built | Loh & Loh Construction, Indonesia |
| Design | 70 m DP2 5000 BHP - ROV Support Vessel |
| Flag | Indonesia |
| Length Overall | 70.00 m |
| Length BP | 63.60 m |
| Breadth Moulded | 16.00 m |
| Depth Moulded | 6.50 m |
| Draft (max) | 5.40 m |
| Freeboard (SLL) | 1112 mm |
| Class | BV |
| Notation | I x HULL x MACH, Supply, Fire-fighting 1, Special Service Standby Rescue Vessel LHNS WS, Unrestricted Navigation, Dynapos AM/AT R |
| GRT/ NRT | 2549.00 T / 765.00 T |
| Deadweight | 2600.00 T |
| Bollard Pull | Nil |

DECK PARTICULARS

| | |
|--------------------|-----------------------|
| Clear Deck Area | 400.00 m ² |
| Deck Carrying Load | 600.00 T |
| Deck Strength | 7.5 T/m ² |

PERFORMANCE

| | |
|----------------|--------------------------|
| Maximum Speed | 13 Knots @ 14.00 T/24hrs |
| Economic Speed | 11 Knots @ 11.00 T/24hrs |

PROPULSION SYSTEM

| | |
|----------------------|--|
| Main Engines | 2 x Niigata 6L28HX, 2500 BHP, 1838 kW, 750 RPM, Total 5000 BHP |
| Auxiliary Engines | 3 x Baudouin 8M26.2, 441 kW @ 1500 RPM |
| Emergency Generator | Weishai CCF J90Y-WV, 99 kW |
| Shaft Generator | 2 x Leroy Somer LSAM 50.2, 900 kW @ 1500 RPM |
| ROV Generator | 2 x Cat C18, 500 kW |
| Air Compressor | 2 x Sperre HL/77, Presurre 30 Bar, Cap-25m ³ /hr, 6.2kw, 1475RPM Ø U3 Stud Link Chain |
| Bow Thruster | 2 x NCG NCT165, 10 T Thrust |
| Steering Gear System | 2 x Niigata Z-pellers ZP-41CP |
| Steering Gear System | 2 x Niigata Z-pellers ZP-41CP |

TANK CAPACITIES

| | |
|---------------|------------------------|
| Fuel Oil | 584.583 m ³ |
| Fresh Water | 456.98 m ³ |
| Drill Water | Nil |
| Brine | Nil |
| Bilge | 10.866 m ³ |
| Ballast Water | 793.855 m ³ |

CARGO DISCHARGE CAPACITIES

| | |
|-----------------------|---|
| Fuel Oil Pump | 80 m ³ /hr @ 60 m head, Desmi NSL80-265 |
| Fresh Water Pump | 80 m ³ /hr @ 60 m head, Itur ILNC50-2001 |
| Drill Water Pump | 80 m ³ / hr @ 60 m head, Itur ILNC50-2001 |
| Brine Pump | 2 x 70 m ³ /hr @ 60 m head, Magnum 4x3x13 |
| Bilge/Ballast/Fire/GS | 2 x 80 m ³ /hr @ 60 m head, Itur ILNC50-2001 |

DP SYSTEM

DP2 System, Navis NavDP 4022, 2 Veripos DGPS, Kongsberg HiPAP 501, Bandak LTW, Radius 1000, Cyscan, 2 Anemometers, 1 MRU, 2 x VRS, 3 Gyro Compass, Navis Independent Joystick

DECK EQUIPMENT

| | |
|-------------------------|---|
| Anchors & Chain | 2 x AC 14 High-Holding Power Stockless, 1710kg, 2 x 357.5m x 36mm |
| Capstan | 2 x 5T Electro Hydraulic Vertical Capstan |
| Anchor Windlass c/w Bow | 2 x Electro Hydraulic 10 T @ 9 m/min |
| Provision Crane | SWL 3 T @ 13 m radius (max SWL/Radius) |
| Knuckle Crane | SWL 20 T @ 6 m radius (max SWL) Man-Riding Capability |
| A Frame | 20 T @ 35 deg |
| Mezzanine Deck | 16 m (L) x 12 m (B), Strength 5.5 T/m ² |
| Moon Pool | 2 m Length x 2 m Breadth |

ACCOMMODATION

| | |
|-----------|-----------------------------|
| Berths | 4 x 1, 6 x 2, 11 x 4 Berths |
| Total Pax | 60 |

EXTERNAL FIRE-FIGHTING EQUIPMENT

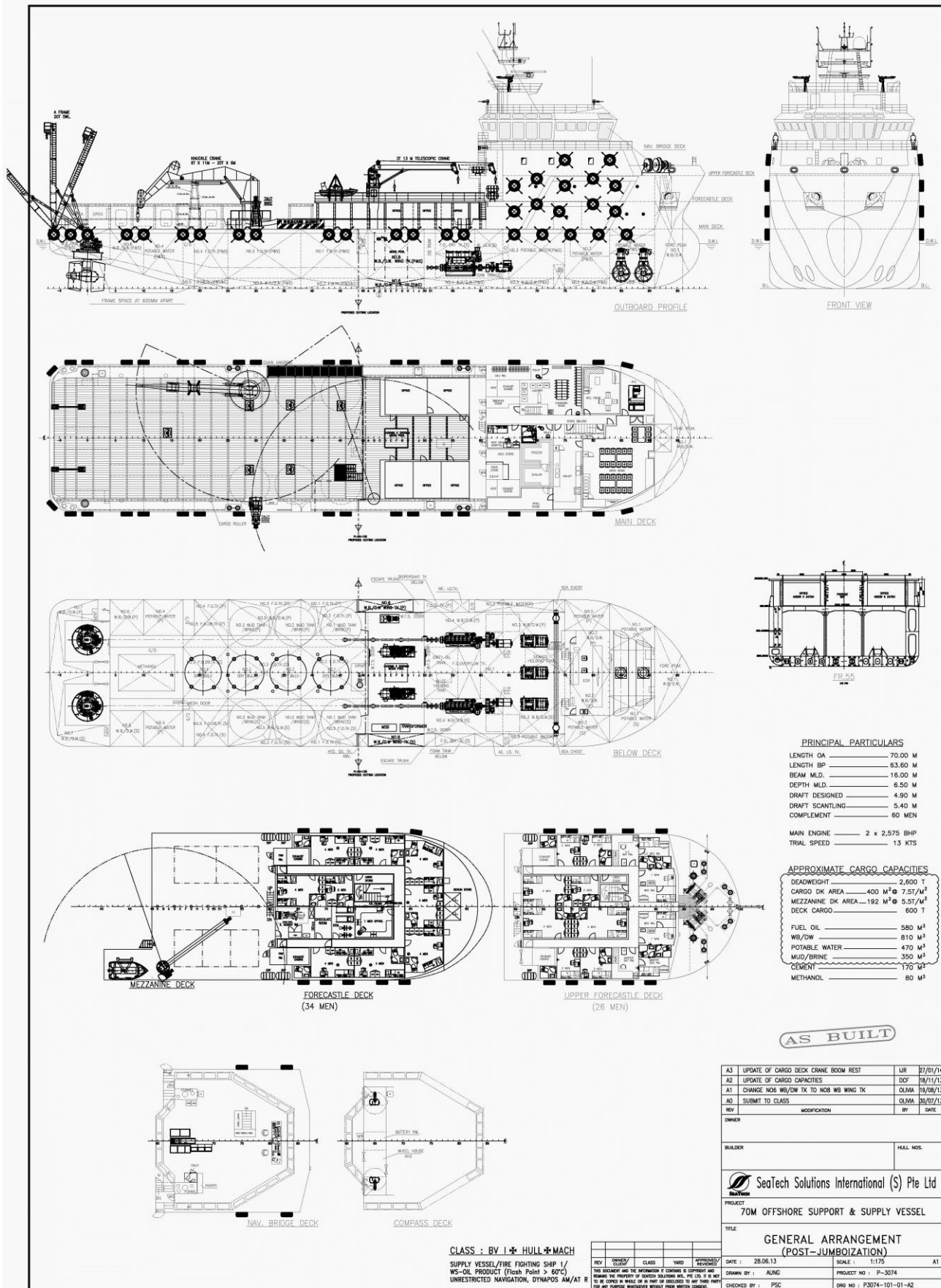
| | |
|----------------|---|
| Fi-Fi Notation | I x Hull x Mach, Supply Vsl FiFi ship 1, Special Svc, Standby Rescue, LHNS-WS, Unrest'd Nav |
| Fi-Fi Monitors | 2 x 1200 m ³ /hr Capacity, 120 m Throw Length |
| Fi-Fi Pump | 2 x 1650 m ³ /hr |

LIFE-SAVING EQUIPMENT

| | |
|-----------------------|---|
| Life Rafts | 6 x 30 men, SOLAS compliant |
| Rescue Boat c/w Davit | 1 x 6 men, Inboard Engine, 50 L Diesel, SOLAS Compliant |

DIVING & ROV SYSTEMS

Capable to support ROV, Deck Mounted SAT & Air Dive System.



PRINCIPAL PARTICULARS

| | |
|-----------------|---------------|
| LENGTH OA | 70.00 M |
| LENGTH BP | 63.60 M |
| BEAM MLD. | 16.00 M |
| DEPTH MLD. | 6.50 M |
| DRAFT DESIGNED | 4.90 M |
| DRAFT SCANTLING | 5.40 M |
| COMPLEMENT | 60 MEN |
| MAIN ENGINE | 2 x 2,575 BHP |
| TRIAL SPEED | 13 KTS |

APPROXIMATE CARGO CAPACITIES

| | |
|-------------------|--|
| DEADWEIGHT | 2,600 T |
| CARGO DK AREA | 400 M ² @ 7.5T/M ² |
| MEZZANINE DK AREA | 192 M ² @ 5.5T/M ² |
| DECK CARGO | 600 T |
| FUEL OIL | 580 M ³ |
| WB/DW | 810 M ³ |
| POTABLE WATER | 470 M ³ |
| MUD/BRINE | 350 M ³ |
| CEMENT | 170 M ³ |
| METHANOL | 80 M ³ |

AS BUILT

| | | | |
|---|---------------------------------------|------------|-----------------|
| A3 | UPDATE OF CARGO DECK CRANE BOOM REST | LIR | 07/01/14 |
| A2 | UPDATE OF CARGO CAPACITIES | DOF | 18/11/13 |
| A1 | CHANGE NO6 WB/DW TX TO NO8 WB WING TX | OLMA | 19/08/13 |
| A0 | SUBMIT TO CLASS | OLMA | 20/07/13 |
| REV | MODIFICATION | BY | DATE |
| OWNER | | | |
| BUILDER | | HULL NOS. | |
| | | | |
| PROJECT 70M OFFSHORE SUPPORT & SUPPLY VESSEL | | | |
| TITLE GENERAL ARRANGEMENT (POST-JUMBOIZATION) | | | |
| REV | DATE | SCALE | A1 |
| DATE | 28.06.13 | SCALE | 1:175 |
| DRAWN BY | ALUNG | PROJECT NO | P-3074 |
| CHECKED BY | PSC | DRG NO | P3074-101-01-A2 |

CLASS : BV I * HULL * MACH
 SUPPLY VESSEL/FIRE FIGHTING SHIP 1/
 WS-OIL PRODUCT (Flash Point > 60°C)
 UNRESTRICTED NAVIGATION, DYNAMIC AM/AT R

