



EXPRESS 59

Fast Utility Craft/ Crewboat

PRINCIPAL PARTICULARS

Year Built	2007
Place Built	Singapore, Penguin Shipyard Int
Design	FLEX 36
Flag	Panama
Length Overall	36.00 m
Length Waterline	35.00 m
Breadth Moulded	7.60 m
Depth Moulded	3.65 m
Draft (max)	1.88 m
Freeboard (SLL)	1.97 m
Class	BV
Notation	Crew Boat/ Cargo Utility Vessel Coastal Service
GRT/ NRT	239.00 T / 72.00 T
Deadweight	113.00 T

DECK PARTICULARS

Clear Deck Area	80.00 m ²
Deck Carrying Load	40.00 T
Deck Strength	2.00 T/m ²

PERFORMANCE

Maximum Speed	22 Knots @ 20 T DWT
Economic Speed	18 Knots @ 20 T DWT

PROPULSION SYSTEM

Main Engines	3 x Cummins x KTA 38 M2, 1350 BHP, 1900 RPM, Total 4050 BHP, 2982 kW
Auxiliary Engines	2 x Cummins 6BT5.9-D(M), 80 kW, 1500 RPM @ 50 Hz
Portable Generator	Nil
Bow Thruster	Teco 75 kW, 415V, 128 AMP, 0.6T Thrust
Propellers	3 x Fixed Pitch Propellers, 4-Bladed, Dial 1195mm x 1539 mm
Steering Gear System	2 x AM112MAA4 X HYDRAULIC
Rudder	2 x Semi Balanced

TANK CAPACITIES

Fuel Oil	55.00 m ³
Fresh Water	27.00 m ³

CARGO DISCHARGE CAPACITIES

Fuel Oil Pump	30 m ³ /hr, 3 Bar
Fresh Water Pump	50 m ³ /hr, 5 Bar
Bilge	50 m ³ /hr, 5 Bar



DECK EQUIPMENT

Anchor Windlass c/w Bow	ABB.M3AA112M 4/RPM 1455/4KW/380-420 VOLT/9A, 135KG Weight Anchor
-------------------------	--

ACCOMMODATION

Passenger Seats	90 Seats
Crew	2 x 4, 2 x 1 = 10 Berths

EXTERNAL FIRE-FIGHTING EQUIPMENT

Fi-Fi Notation	Detriot 8VFO44134
Fi-Fi Monitors	600 m ³ /hr, 130 m Throw Length
Fi-Fi Pump	600 m ³ /hr
Oil Dispersant System	Nil

INTERNAL FIRE-FIGHTING & ANTI-POLLUTION EQUIPMENT

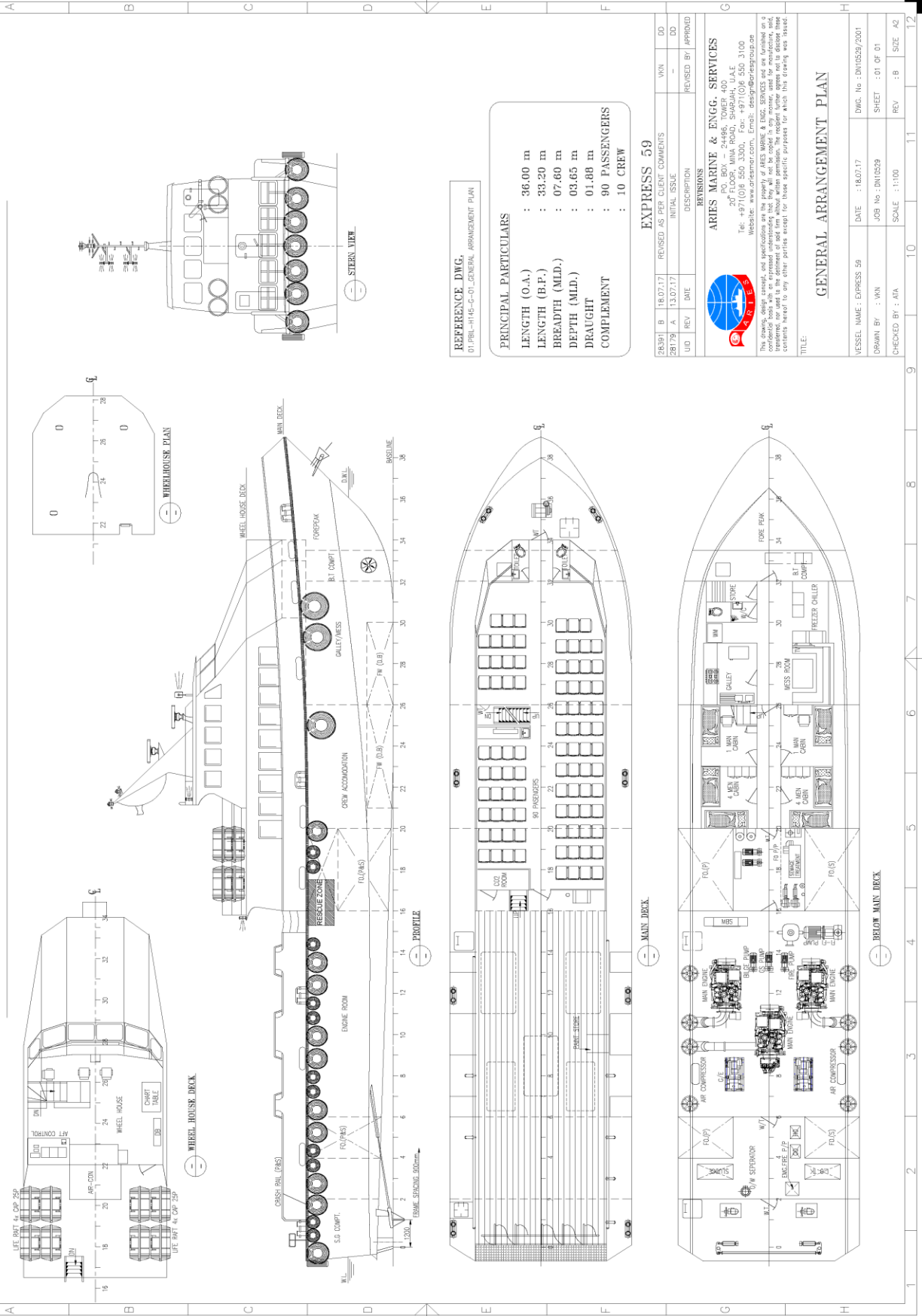
Emergency Fire Pump	Yanmar L70AE-DTMYC, 4.9KW, 15m ³ /hr 30m Head
CO2 Fi-Fi System	Everscape 4CYL x 45KG
Fire Detection & Alarm	Smoke and Heat Detector

LIFE-SAVING EQUIPMENT

Life Rafts	8 x 25 men, SOLAS Compliant
------------	-----------------------------

Particulars are believed to be correct but not guaranteed. Owners reserve the rights to amend the specifications without notifications. Particulars are entirely without warranty as to correctness and interested parties must inspect vessel's certificates, drawings or physical inspection of vessel.

GENERAL ARRANGEMENT PLAN - EXPRESS 59



REFERENCE DWG. 01-PBL-116-C-01 GENERAL ARRANGEMENT PLAN

PRINCIPAL PARTICULARS

- LENGTH (O.A.) : 36.00 m
- LENGTH (B.P.) : 33.20 m
- BREADTH (MLD.) : 07.60 m
- DEPTH (MLD.) : 03.65 m
- DRAUGHT : 01.88 m
- COMPLEMENT : 90 PASSENGERS
- : 10 CREW

EXPRESS 59

REVISION	DATE	DESCRIPTION	BY	APP'D
25179	13.07.17	REVISED AS PER CLIENT COMMENTS	MM	DD
180717	18.07.17	INITIAL ISSUE	MM	DD



ARIES MARINE & ENGG. SERVICES
 PO BOX 24486, TOWER 400, ALE
 207
 Tel: +971(0)8 550 3300. Fax: +971(0)8 550 3100
 Website: www.ariesmar.com. Email: design@ariesgroup.com

This drawing, design concept, and specifications are the property of ARIES MARINE & ENGG. SERVICES and are furnished on a non-exclusive basis for the use of the client for the project for which it is intended. The recipient undertakes not to disclose these contents hereof to any other parties except for those specific purposes for which this drawing was issued.

GENERAL ARRANGEMENT PLAN

VESSEL NAME : EXPRESS 59	DATE : 18.07.17	DWG. No. : DN10529/2001
DRAWN BY : MM	JOB No. : DN10529	SHEET : 01 OF 01
CHECKED BY : AIA	SCALE : 1:100	REV : B SIZE A2