



CERDIK

40M / 2100BHP / 2 Point Mooring Utility Support Vessel

PRINCIPAL PARTICULARS

Year Built	2009
Place Built	Guangzhou Panyu Lingshan Shipyard, China
Design	Cheoy Lee 40m Utility
Flag	Panama
Length Overall	40.62 m
Length BP	37.41 m
Breadth Moulded	9.80 m
Depth Moulded	3.70 m
Draft (max)	3.10 m
Freeboard (SLL)	0.60 m
Class	BV
Notation	I x Hull x Mach, Tug, Unrestricted Navigation
GRT/ NRT	468.00 T / 140.00 T
Deadweight	378.00 T
Bollard Pull	Nil

DECK PARTICULARS

Clear Deck Area	151.00 m ²
Deck Carrying Load	100.00 T
Deck Strength	3.50 T/m ²

PERFORMANCE

Maximum Speed	16 Knots @ 8 T/24 hrs
Economic Speed	12 Knots @ 7 T/24 hrs

PROPULSION SYSTEM

Main Engines	2 x Caterpillar 3508B, 1050 BHP, 783.3 kW @ 1600 RPM, Total 2100 BHP
Auxiliary Engines	3 x Caterpillar 3406C, 260 kW @ 1500 RPM
Emergency Generator	1 x Yanmar YDP, 5.7 kW @3000 RPM
Bow Thruster	HRP 3001 TT, 3 T Thrust
Stern Thruster	Tunnel HRP 1001TT, 1 T Thrust
Propellers	2 x Fixed Pitch Propellers
Steering Gear System	2 x Electro-Hydraulic Pump Palmarine
Rudder	2 x Streamlined Spade Type

TANK CAPACITIES

Fuel Oil	233.70 m ³
Fresh Water	152.20 m ³
Bilge	2.40 m ³
Ballast Water	112.70 m ³

CARGO DISCHARGE CAPACITIES

Fuel Oil Pump	30 m ³ /hr @ 30 m head
Fresh Water Pump	35 m ³ /hr @3 5 m head
Bilge Pump	35 m ³ /hr @ 30 m head



DECK EQUIPMENT

Anchors & Chain	2 x 2 T Flipper Delta, 750m x 28 mm Wire Rope
Tugger Winch	Nil
Capstan	1 x UHC-5-U, Electric Hydraulic, 5 T Pull
Anchor Windlass c/w Bow	2 x Unitech UHM-12/40S, 12 T Pull
Crane	SWL 2 T @ 11.6 m Radius (max SWL)
Bow Winch	2 x Unitech UHM-12/40S, 12 T Pull

ACCOMMODATION

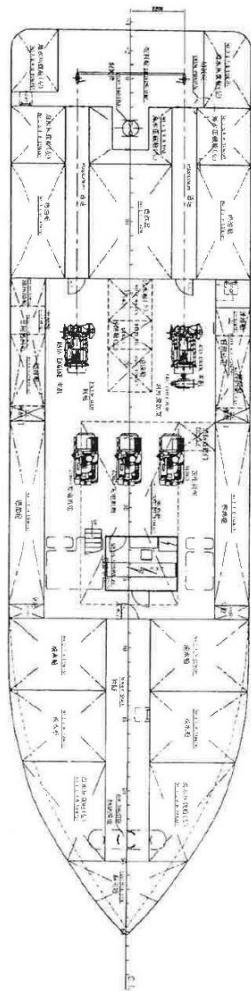
Berths	2 x 1, 1 x 2, 7 x 4 Berths
Total Pax	32

EXTERNAL FIRE-FIGHTING EQUIPMENT

Fi-Fi Notation	1/2 Fi-Fi
Fi-Fi Monitors	1 x Electric Control Monitor, 1200 m ³ /hr, 120 m Throw Length
Fi-Fi Pump	1 x Scampump SE-592 24, 1200 m ³ /hr

LIFE-SAVING EQUIPMENT

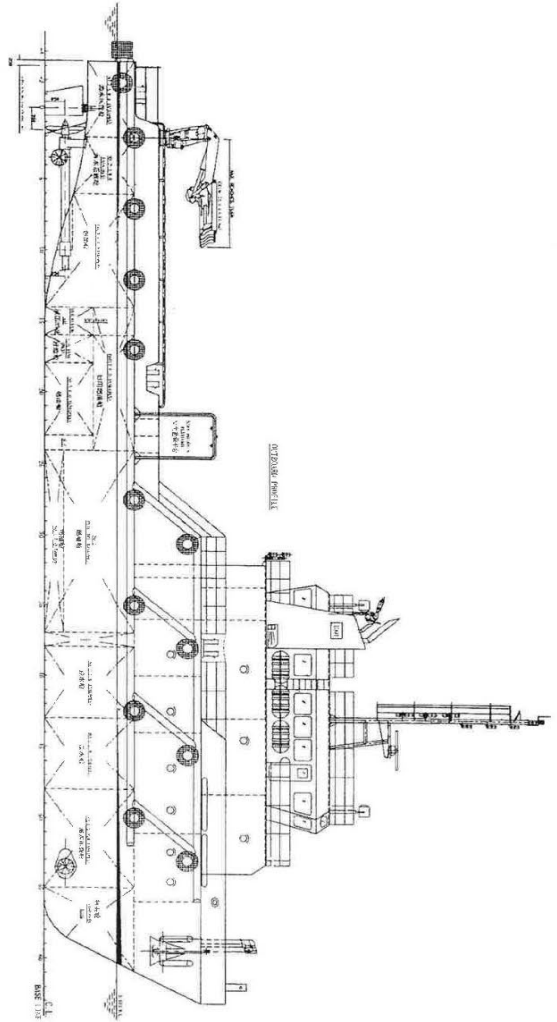
Life Rafts	6 x 20 Men, SOLAS Compliant
Rescue Boat c/w Davit	Nil



DECK PLAN VIEW

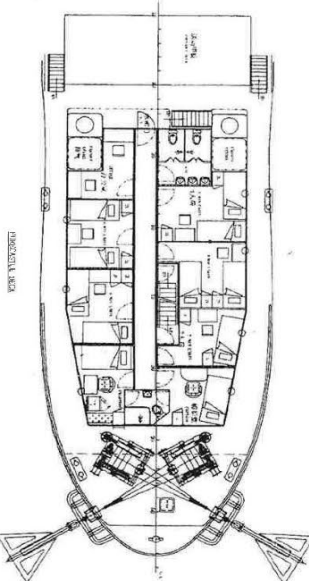


HULL PLAN VIEW

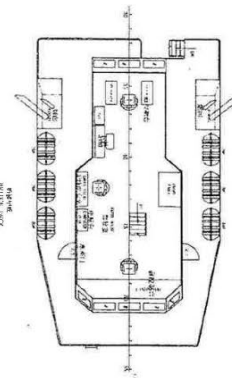


STERN VIEW

- GENERAL DIMENSIONS**
- LENGTH OVERALL 42.92 M
 - LENGTH BETWEEN PERPENDICULARS 36.80 M
 - DECK WIDE OVERALL 9.80 M
 - DECK WIDE BEHIND 3.78 M
 - DECK WIDE AHEAD 3.14 M
 - MAX. DRAUGHT 3.10 M
 - ASSEMBLY DECK 22.85 M
 - SECTOR CAPACITY 25 PA
 - WAKE DECK AREA (DECK LANDING - 3.5 7'6") 151.50 M²
 - TOTAL POWER 2,000 HP
 - SPEED (MAX. WIND) 12.0 KNOTS
 - 2,000 HP (DECK)



HULL PLAN VIEW



HULL PLAN VIEW

GENERAL ARRANGEMENT	
NAME	40M UTILITY VESSEL
TYPE	GENERAL ARRANGEMENT
CLASS	R. C. 1. FULL. MAX. L. 1. UNRESTRICTED WATERS
DESIGNER	1:100
DATE	15/06/19-C-01
SCALE	M
PROJECT NO.	
REV.	