



AOS RATCHABURI

Stern Drive Steel Tug



PRINCIPAL PARTICULARS

Year Built	2004
Place Built	Guangzhou Panyu Lingshan Shipyard, China
Design	KCM Consultants
Flag	Panama
Length Overall	45.00 m
Length BP	41.12 m
Breadth Moulded	11.00 m
Depth Moulded	4.00 m
Draft (max)	3.41 m
Freeboard (SLL)	0.61 m
Class	BV
Notation	I x Hull x Mach, Tug, Unrestricted Navigation
GRT/ NRT	499.00 T / 149.00 T
Deadweight	523.97 T
Bollard Pull	40.99 T

DECK PARTICULARS

Clear Deck Area	210.00 m ²
Deck Carrying Load	160.00 T
Deck Strength	5.00 T/m ²

PERFORMANCE

Maximum Speed	12 Knots @ 13 T/24hrs
Economic Speed	8.5 Knots @ 7 T/24hrs

PROPULSION SYSTEM

Main Engines	2 x Caterpillar 3512B, 1750 BHP, 1305 kW @ 1600 RPM, Total 3500 BHP
Auxiliary Engines	2 x Caterpillar 3406, , 215 kW @ 1500 RPM
Air Compressor	1 x Hitachi 3.7P-9.5V5
Bow Thruster	Tunnel HRP 2001TT
Propellers	2 x Fixed Pitch Propellers with Kort Nozzles
Steering Gear System	Palmarine Hydraulic ISO32
Rudder	2 x Palmarine

TANK CAPACITIES

Fuel Oil	276.54 m ³
Fresh Water	152.80 m ³
Bilge	Nil
Ballast Water	86.50 m ³

CARGO DISCHARGE CAPACITIES

Fuel Oil Pump	50 m ³ /hr
Fresh Water Pump	50 m ³ /hr
Drill Water Pump	50 m ³ /hr
Bilge Pump	50 m ³ /hr

DECK EQUIPMENT

Anchors & Chain	2, Jiangsu Asia Star Anchor Chain
Tugger Winch	2 x 5 T, 1st Wire 26 mm x 100 m
Anchor Windlass c/w Bow	Electrical Windlass, DMA28-2-45
Crane	Nil

ANCHOR HANDLING & TOWING EQUIPMENT

Anchor Handling/ Towing Winch	40 T, Waterfall Double Drum
AH/Towing Drum Capacity	1000 m (L) x 32 mm (Dia)
Spare Reel Drum Cap	Nil
Line Pull @ First Layer	Nil
Brake Holding	60 T
Towing Pin	100 T, Hydraulic Type
Shark Jaw	100 T, Hydraulic Type
Stern Roller	SWL 80 T, 3.5 m (L) x 1.5 m (Dia)
Fairlead	Nil
Bow Winch	Electrical Windlass, DMA28-2-45, W.W.L. 33.3 kW, W.L. 20 kW
Aft Tow Winch	Pull 50 T x 4 m/min (1st Layer Low Speed), Pull 12 T x 12 m/min (1st Layer High Speed), Brake Holding 120 T

ACCOMMODATION

Berths	3 x 4, 3 x 2, 2 x 1 Berths
Total Pax	20

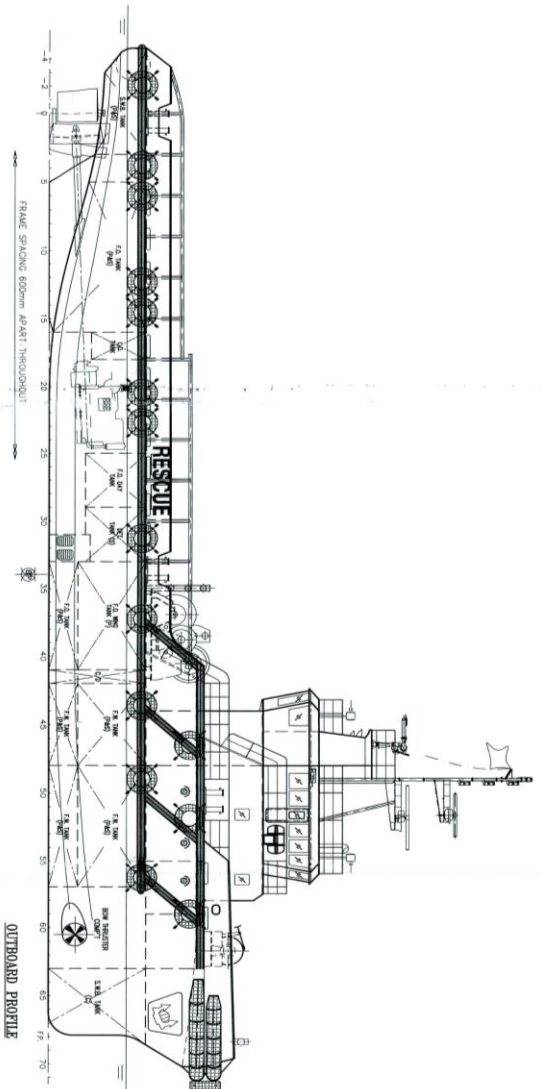
EXTERNAL FIRE-FIGHTING EQUIPMENT

Fi-Fi Notation	Fi-Fi 1/2, Fire Fighting System (FFS)
Fi-Fi Monitors	2 x 600 m ³ /h
Fi-Fi Pump	1 x 1200 m ³ /hr

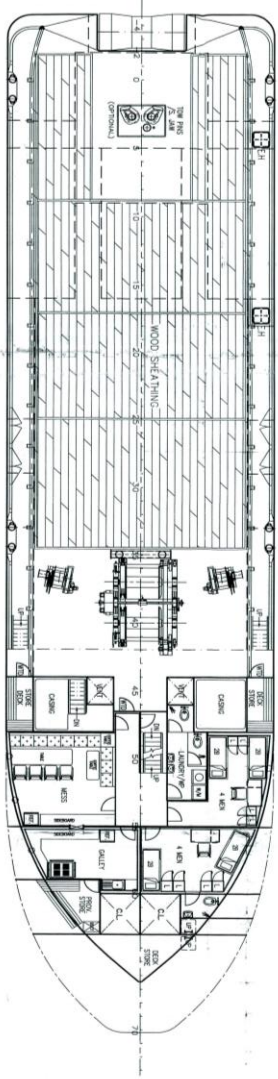
LIFE-SAVING EQUIPMENT

Life Rafts	2 x 20 Men, SOLAS Compliant
Rescue Boat c/w Davit	Nil

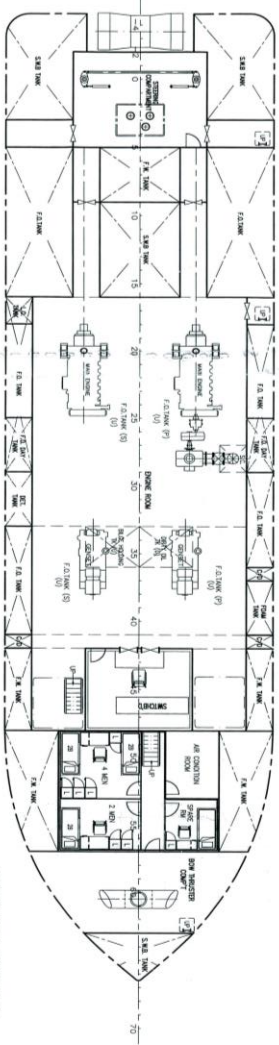
Particulars are believed to be correct but not guaranteed. Owners reserve the rights to amend the specifications without notifications. Particulars are entirely without warranty as to correctness and interested parties must inspect vessel's certificates, drawings or physical inspection of vessel.



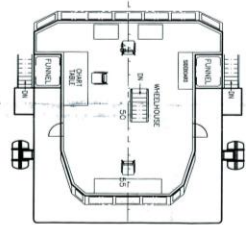
OUTBOARD PROFILE



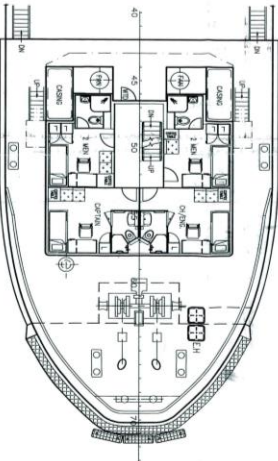
MAIN DECK PLAN



BELOW MAIN DECK PLAN



WHELFHOUSE DECK PLAN



FORECASTLE DECK

PRINCIPAL DIMENSIONS

LENGTH OVERALL	45.00 M
LENGTH WATERLINE	42.75 M
LENGTH B.P.	40.00 M
BREADTH MOULDED	11.00 M
DEPTH MOULDED	4.00 M
DESIGN DRAFT MOULDED	3.20 M
FUEL OIL	250.0 M ³ (app)
FRESH WATER	175.0 M ³ (app)
CLEAR DECK AREA	210.0 M ²
MAIN ENGINE	2 x 1750 BHP
SPEED (TRIALS)	12.0 KNOTS
ROLLARD TULL	40 TONS
CREW COMPLIMENT	20 MEN

BUREAU VERITAS Coupes 0.1.8.0.9.R
 VU 02 NOV. 2004
 J. Zhou
 J. Zhou

FOR APPROVAL

NO.	DESCRIPTION	DATE
1	ISSUED AS PER MARKET COMMENTS	14-11-04
2	REVISED AS PER MARKET COMMENTS	14-11-04
3	REVISED AS PER MARKET COMMENTS	14-11-04

DESIGNED BY: J. Zhou
 CHECKED BY: J. Zhou
 DRAWN BY: J. Zhou

KHIAM CHUAN MARINE PTE LTD
 15, HILLVIEW TERRACE, SINGAPORE 669226
 TEL: 67753383 (6 LINES) FAX: 67753786
 E-MAIL: SALES@KHIAMCHUAN.COM

45m UTILITY/SUPPORT VESSEL

GENERAL ARRANGEMENT

APPROVED BY: REV. 04.11.04-04

THIS DOCUMENT AND THE INFORMATION IT CONTAINS IS THE PROPERTY OF KHIAM CHUAN MARINE PTE. LTD. IT IS NOT TO BE COPIED, REPRODUCED, OR TRANSMITTED IN ANY FORM OR BY ANY MEANS, WITHOUT PERMISSION FROM KHIAM CHUAN MARINE PTE. LTD.

COMPONENT	SHEET NO.
GENERAL ARRANGEMENT	13115
SCALE	GRAPHIC NUMBER
1:100	KCM/0315(A)-01
NO.	REV.
3	