



Uniexpress 10

Fast Crewboat/ Utility Vessel

PRINCIPAL PARTICULARS

Year Built	2008
Place Built	Thailand
Design	Marsun Co. Ltd.
Flag	Thailand
Length Overall	36.00 m
Length BP	33.02 m
Breadth Moulded	7.60 m
Depth Moulded	3.30 m
Draft (max)	1.70 m
Freeboard (SLL)	1.61 m
Class	BV
Notation	I, + HULL, + MACH, Crewboat, Cargo Utility Vessel, Unrestricted Navigation
GRT/ NRT	239.00 T / 71.00 T
Deadweight	120.00 T

DECK PARTICULARS

Clear Deck Area	80 m ²
Deck Carrying Load	50.00 T
Deck Strength	2.00 T/m ²

PERFORMANCE

Maximum Speed	24 Knots @ 15 T/24 hrs @ 32 DWT
Economic Speed	18 Knots @ 9.2 T/24 hrs @ 32 DWT

PROPULSION SYSTEM

Main Engines	3 x Cummins KTA 38-M2, 1350 BHP, 1007 kW @ 1950 RPM, Total 4050 BHP
Auxiliary Engines	2 x Cummins Marathon, 80 kW
Portable Generator	Nil
Bow Thruster	Nil
Propellers	3 x Nickel-Aluminium Bronze 4-Blade Propeller Stone Marine
Steering Gear System	Duplex Electro Hydraulic Pump System
Rudder	2 x SG-K7093U12-2.0-35-T

TANK CAPACITIES

Fuel Oil	69.80 m ³
Fresh Water	20.00 m ³

CARGO DISCHARGE CAPACITIES

Fuel Oil Pump	Azcue , BT-IL52D3, 20 m ³ /hr @ 2900 RPM
Fresh Water Pump	Azcue CA-50-7 Ø 185, 20 m ³ /hr, 2900 RPM
Bilge	Azcue CA-50-7 Ø 185, 30 m ³ /hr, 2900 RPM

DECK EQUIPMENT

Anchor Windlass c/w Bow	Electro Hydraulic Winch c/w Wire Rope, Chain & Single Anchor
Crane	Nil



ACCOMMODATION

Passenger Seats	92
Crew	4 x 2, 1 x 2 =10

EXTERNAL FIRE-FIGHTING EQUIPMENT

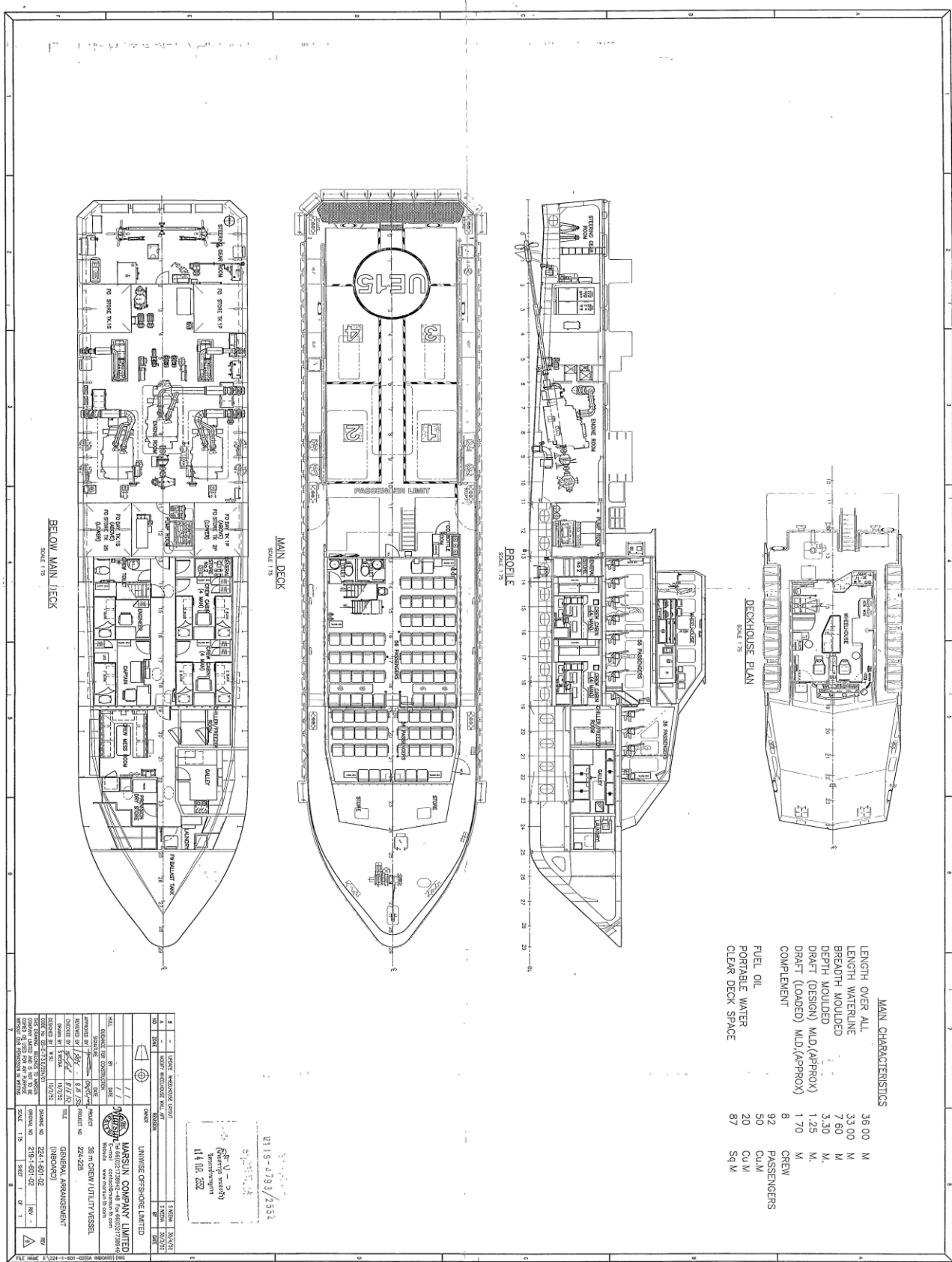
Fi-Fi Notation	ACP, 600 m ³ /h, 250DF
Fi-Fi Monitors	600 m ³ /hr, 100 m Throw Length
Fi-Fi Pump	600 m ³ /hr
Oil Dispersant System	Nil

INTERNAL FIRE-FIGHTING & ANTI-POLLUTION EQUIPMENT

Emergency Fire Pump	Azcue CA-50-7, 185 Dia, 30 m ³ /hr @ 2900 RPM
CO2 Fi-Fi System	Fixed CO2 System for Engine Room
Fire Detection & Alarm	Notifier: NFS2-640/E Smoke Detector & Fire Alarm Bell in Living Rm, Smoke w/ Heat Detector & Fire Alarm Bell in E/R

LIFE-SAVING EQUIPMENT

Life Rafts	8 x 25 men, SOLAS Compliant
Rescue Boat c/w Davit	Nil



MAIN CHARACTERISTICS

LENGTH OVER ALL	36.00	M
LENGTH WATERLINE	33.00	M
BREADTH MOULDED	7.60	M
DEPTH MOULDED	3.30	M
DRAFT (DESIGN)	1.25	M.
DRAFT (LOADED)	1.70	M.
M.D.(APPROX)		
M.I.D.(APPROX)		
COMPLEMENT	8	CREW
FUEL OIL	92	PASSENGERS
PORTABLE WATER	50	CU M
CLEAR DECK SPACE	20	CU M
	87	SQ M

3119-4793/2552
 Marslin V-2
 (General Arrangement)
 14.01.2020

NO.	1	2	3	4	5	6	7	8	9	10	11	12	13	14	15	16	17	18	19	20	21	22	23	24	25	26	27	28	29	30	31	32	33	34	35	36	37	38	39	40	41	42	43	44	45	46	47	48	49	50	51	52	53	54	55	56	57	58	59	60	61	62	63	64	65	66	67	68	69	70	71	72	73	74	75	76	77	78	79	80	81	82	83	84	85	86	87	88	89	90	91	92	93	94	95	96	97	98	99	100
NO.	1	2	3	4	5	6	7	8	9	10	11	12	13	14	15	16	17	18	19	20	21	22	23	24	25	26	27	28	29	30	31	32	33	34	35	36	37	38	39	40	41	42	43	44	45	46	47	48	49	50	51	52	53	54	55	56	57	58	59	60	61	62	63	64	65	66	67	68	69	70	71	72	73	74	75	76	77	78	79	80	81	82	83	84	85	86	87	88	89	90	91	92	93	94	95	96	97	98	99	100

