



Uniexpress 13

Fast Crewboat/ Utility Vessel

PRINCIPAL PARTICULARS

Year Built	2009
Place Built	Thailand
Design	Marsun Co. Ltd
Flag	Thailand
Length Overall	36.00 m
Length BP	33.02 m
Breadth Moulded	7.60 m
Depth Moulded	3.30 m
Draft (max)	1.70 m
Freeboard (SLL)	1.06 m
Class	DNV.GL
Notation	1A HSLC Crew R1
GRT/ NRT	205.00 T/ 63.00 T
Deadweight	120.00 T

DECK PARTICULARS

Clear Deck Area	80.00 m ²
Deck Carrying Load	50.00 T
Deck Strength	2.00 T/m ²

PERFORMANCE

Maximum Speed	24 Knots @ 15 T/24 hrs @ 32 DWT
Economic Speed	18 Knots @ 9.2 T/24 hrs @ 32 DWT

PROPULSION SYSTEM

Main Engines	3 x Cummins KTA 38-M2, 1350 BHP @ 1950 RPM, Total 4050 BHP
Auxiliary Engines	2 x Cummins 6BT5.9, 80 kW @ 1500 RPM
Propellers	3 x Nickel-Aluminium Bronze 4-Blade Propeller, Stone Marine
Steering Gear System	Duplex Electro Hydraulic Pump System
Rudder	2 Units

TANK CAPACITIES

Fuel Oil	50.00 m ³
Fresh Water	17.70 m ³

CARGO DISCHARGE CAPACITIES

Fuel Oil Pump	20 m ³ /hr @ 40 m Head, Azcue BT-IL52D3
Fresh Water Pump	20 m ³ /hr @ 40 m Head, Azcue, Model CA50/7A
Bilge	30 m ³ /hr, 2900 RPM, Azcue CA-50-7 Ø185

DECK EQUIPMENT

Anchor Windlass c/w Bow	Electro Hydraulic Winch c/w Wire Rope, Chain & Single Anchor
-------------------------	--

ACCOMMODATION

Passenger Seats	92
Crew	6



EXTERNAL FIRE-FIGHTING EQUIPMENT

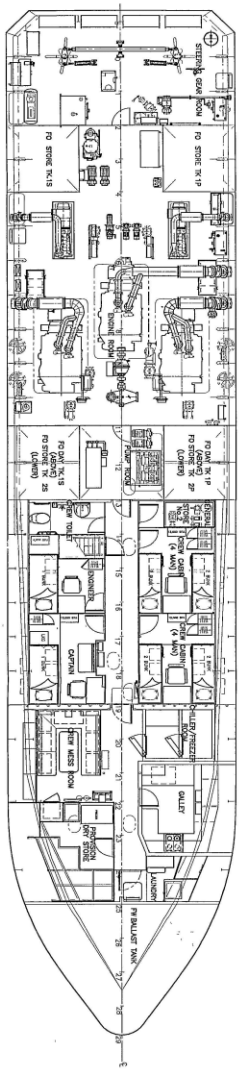
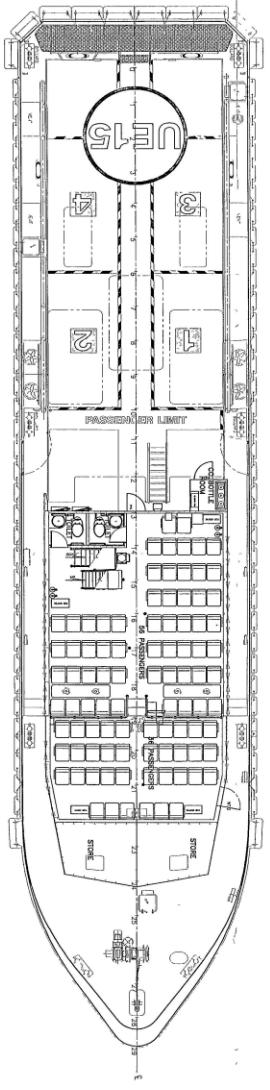
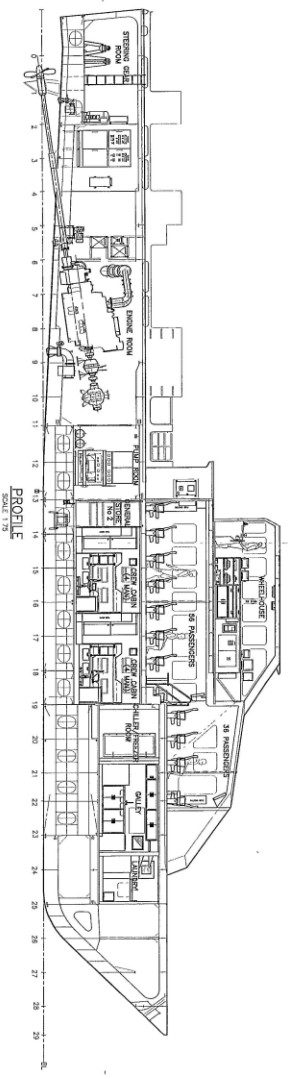
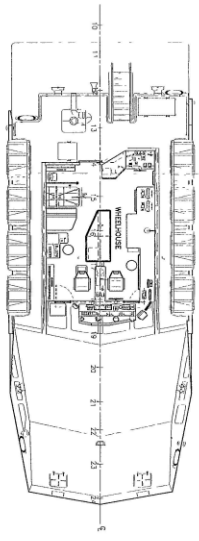
Fi-Fi Notation	ACP-600 m ³ /h, 250DF
Fi-Fi Monitors	600 m ³ /hr, 100 m Throw Length
Fi-Fi Pump	600 m ³ /hr

INTERNAL FIRE-FIGHTING & ANTI-POLLUTION EQUIPMENT

Emergency Fire Pump	Azcue, CA 50/7-A, 30 m ³ /hr
CO2 Fi-Fi System	3 x Fixed CO2 System for Engine Room
Fire Detection & Alarm	Notifier: AFP-200 Intelligent Fire Detection & Alarm System

LIFE-SAVING EQUIPMENT

Life Rafts	8 x 25 men, SOLAS Compliant
------------	-----------------------------



MAIN CHARACTERISTICS

LENGTH OVER ALL	36.00	M
LENGTH WATERLINE	33.00	M
BREADTH MOULDED	7.60	M
DEPTH MOULDED	3.30	M
DRAFT (DESIGN)	1.25	M
DRAFT (LOADED)	1.70	M
CREW COMPLEMENT	8	
PASSENGERS	92	
FUEL OIL	50	CUM
PORTABLE WATER	20	CUM
CLEAR DECK SPACE	87	SQ M

NO.	NAME	DATE	REVISION
1	UPPER WELDED UNITS	20/1/12	
2	LOWER WELDED UNITS	20/1/12	
3	GENERAL ARRANGEMENT	17/12	
4	GENERAL ARRANGEMENT	17/12	
5	GENERAL ARRANGEMENT	17/12	
6	GENERAL ARRANGEMENT	17/12	
7	GENERAL ARRANGEMENT	17/12	
8	GENERAL ARRANGEMENT	17/12	
9	GENERAL ARRANGEMENT	17/12	
10	GENERAL ARRANGEMENT	17/12	

W119-4793/4532
 14.01.2012
 14.01.2012

