



# Uniexpress 15

Fast Crewboat / Utility Vessel

## PRINCIPAL PARTICULARS

Year Built	2009
Place Built	Thailand
Design	Marsun Co. Ltd
Flag	Thailand
Length Overall	36.00 m
Length BP	33.02 m
Breadth Moulded	7.60 m
Depth Moulded	3.30 m
Draft (max)	1.70 m
Freeboard (SLL)	0.96 m
Class	BV
Notation	I, + HULL, + MACH, Crewboat, Cargo Utility Vessel, Unrestricted Navigation
GRT/ NRT	205.00 T / 63.00 T
Deadweight	120.00 T

## DECK PARTICULARS

Clear Deck Area	80.00 m <sup>2</sup>
Deck Carrying Load	50.00 T
Deck Strength	2.00 T/m <sup>2</sup>

## PERFORMANCE

Maximum Speed	21.8 Knots @ 17.16 m <sup>3</sup> /24 hrs
Economic Speed	15-16 Knots @ 9.98 m <sup>3</sup> /24 hrs

## PROPULSION SYSTEM

Main Engines	3 Units x Cummins KTA38-M2, 1350 BHP, 1007 kW @ 1950 RPM, Total BHP = 4050
Auxiliary Engines	2 x Cummins 6BT5.9-D(M), 91 kW @ 1500 RPM
Propellers	3 x Nickel-Aluminium Bronze Propellers Stone Marine
Steering Gear System	2 x 2.5 T, Dual pump
Rudder	2 x Hydraulic Type

## TANK CAPACITIES

Fuel Oil	69.80 m <sup>3</sup>
Fresh Water	20.00 m <sup>3</sup>

## CARGO DISCHARGE CAPACITIES

Fuel Oil Pump	20.00 m <sup>3</sup> /hr @ 2900 RPM, Azcue BT-IL52D3
Fresh Water Pump	30.00 m <sup>3</sup> /hr, Azcue BT-IL52D3/ SN362762

## DECK EQUIPMENT

Anchor Windlass c/w Bow	Jaden, S/N 140095-1
-------------------------	---------------------

## ACCOMMODATION

Passenger Seats	92
Crew	6



## EXTERNAL FIRE-FIGHTING EQUIPMENT

Fi-Fi Notation	TECHNODRIVE 3DS2200/800/SN2200170/SAE 1
Fi-Fi Monitors	600 m <sup>3</sup> /hrs, 100 m Throw Length
Fi-Fi Pump	600 m <sup>3</sup> /hr
Oil Dispersant System	Nil

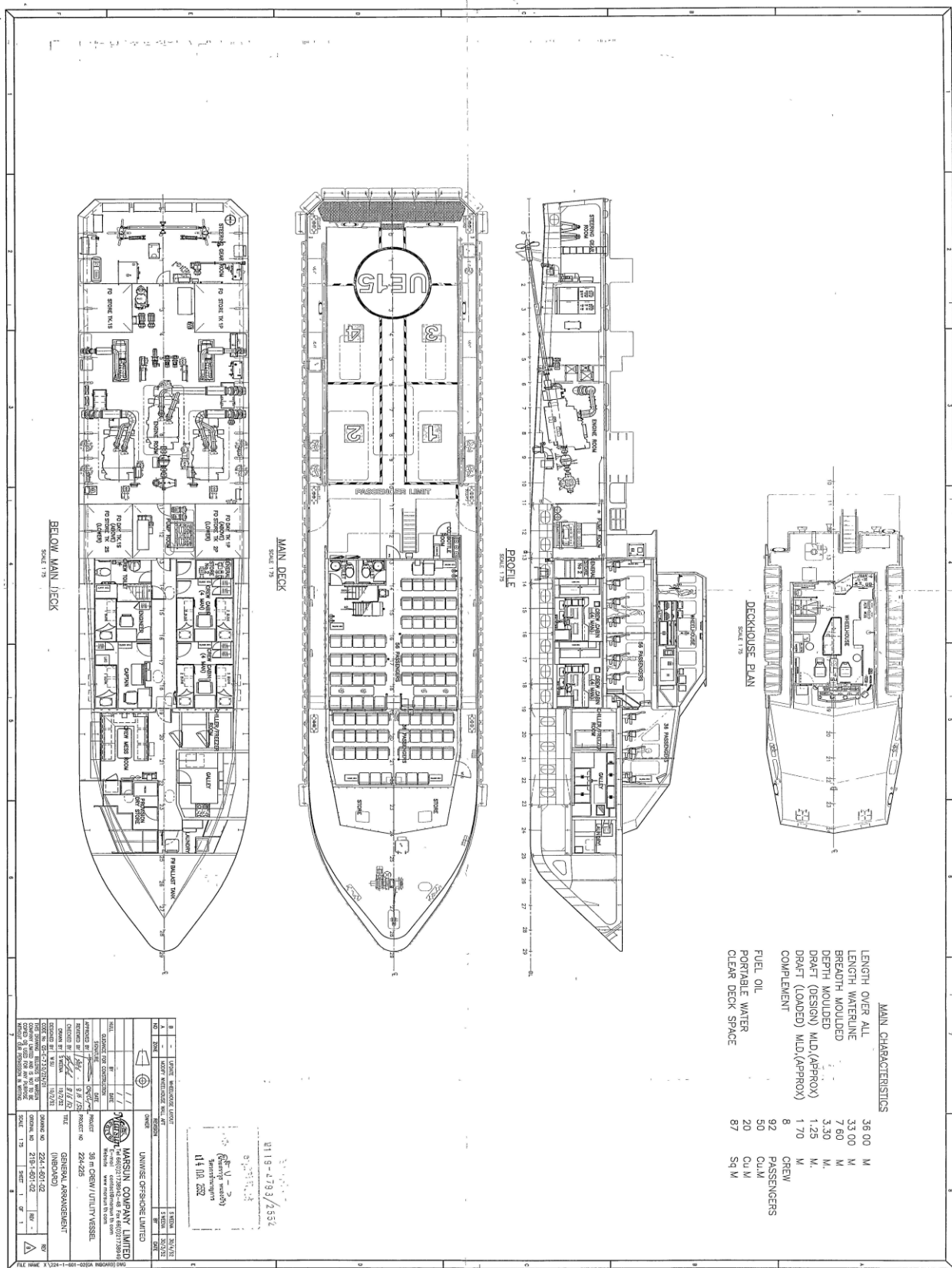
## INTERNAL FIRE-FIGHTING & ANTI-POLLUTION EQUIPMENT

Emergency Fire Pump	Azcue CA 50/7-A, 30 m <sup>3</sup> /hr @ 2900 RPM
CO2 Fi-Fi System	Fixed CO2 System for Engine Room
Fire Detection & Alarm	Notifier, NFS2-640/E

## LIFE-SAVING EQUIPMENT

Life Rafts	8 x 25 men, SOLAS Compliant
------------	-----------------------------

Particulars are believed to be correct but not guaranteed. Owners reserve the rights to amend the specifications without notifications. Particulars are entirely without warranty as to correctness and interested parties must inspect vessel's certificates, drawings or physical inspection of vessel.



**MAIN CHARACTERISTICS**

LENGTH OVER ALL	36.00	M
LENGTH WATERLINE	33.00	M
BREADTH MOULDED	7.60	M
DEPTH MOULDED	3.30	M
DRAFT (DESIGN)	1.25	M
DRAFT (LOADED)	1.70	M
COMPLEMENT	8	CREW
	92	PASSENGERS
FUEL OIL	50	CUM
PORTABLE WATER	20	CUM
CLEAR DECK SPACE	87	Sq M

NO.	1	NAME	UNIVERSE OFFSHORE LIMITED
NO.	2	OWNER	MANSION COMPANY LIMITED
NO.	3	DESIGNER	MEG
NO.	4	CONTRACT NO.	224-225
NO.	5	PROJECT NO.	224-225
NO.	6	DATE	14.10.2012
NO.	7	SCALE	1:100
NO.	8	PROJECT	36 m CREW/UTILITY VESSEL
NO.	9	GENERAL ARRANGEMENT	(INDIVIDUAL)
NO.	10	DRAWING NO.	224-1-501-02
NO.	11	ISSUE NO.	210-1-501-02
NO.	12	DATE	14.10.2012
NO.	13	SCALE	1:100
NO.	14	PROJECT	36 m CREW/UTILITY VESSEL

UNIVERSE OFFSHORE LIMITED  
 1119-2193/2552  
 14.10.2012

