

AOS PATTAYA

Azimuth Stern Drive Tug

PRINCIPAL PARTICULARS

Year Built	2006
Place Built	Unithai Shipyard, Thailand
Design	WorldWide Marine BV
Flag	Panama
Length Overall	45.64 m
Length BP	42.38 m
Breadth Moulded	13.20 m
Depth Moulded	6.00 m
Draft (max)	5.30 m
Freeboard (SLL)	1.01 m
Class	BV
Notation	I x Hull x Mach, Tug, Fire Fighting Ship 1 - Water Spraying, Unrestricted Navigation, INWATERSURVEY
GRT/ NRT	818.00 T / 245.00 T
Deadweight	680.97 T
Bollard Pull	65.00 T

DECK PARTICULARS

Clear Deck Area	192.00 m ²
Deck Carrying Load	250.00 T
Deck Strength	5.00 T/m ²

PERFORMANCE

Maximum Speed	13 Knots @ 10 T/24 hrs
Economic Speed	9 Knots @ 8 T/24 hrs

PROPULSION SYSTEM

Main Engines	2 x Niigata 6L28HX, 2497 BHP, 1838 kW @ 750 RPM, Total 4994 BHP
Auxiliary Engines	2 x Caterpillar 3408, 280 kW @ 1500 RPM
Emergency Generator	Caterpillar 3056, 84 kW
Air Compressor	2 x Tanabe LHC-33
Bow Thruster	Schottel Electric Driven
Propellers	2 x Niigata Azimuth Fixed Pitch Z-Peller ZP-41
Steering Gear System	2 x Azimuth Stern Drive

TANK CAPACITIES

Fuel Oil	369.93 m ³
Fresh Water	102.40 m ³
Bilge	5.45 m ³
Ballast Water	264.44 m ³

CARGO DISCHARGE CAPACITIES

Fuel Oil Pump	35 m ³ /hr @ 40 m head
Fresh Water Pump	45 m ³ /hr @ 50 m head
Drill Water Pump	45 m ³ /hr @ 50 m head
Bilge Pump	45 m ³ /hr @ 50 m head



DECK EQUIPMENT

Anchors & Chain	Gypsy Pull 5 T x 12 m/min, 2 x 6 Shackles, Anchor Chain 28 mm (Dia)
Tugger Winch	150 m x 22 mm (Max 6 Layers), 5 T x 15 m/min, Brake Holding 7.5 T (Static)
Capstan	5 T x 12 m/min, Hydraulic Vertical Capstan
Anchor Windlass c/w Bow	1 x ME, Drum Capacity 300 m x 52 mm dia SWR (10 Layers), Pull 30 T x 10 m/min (Low Speed), 5 T x 30 m/min (High Speed), 45 m/min (Slack Speed) Brake Holding 155 T (Static 1st Layer)
Crane 1	SWL 5 T @ 12 m Radius (max SWL)
Crane 2	SWL 2.05 T, Provision Crane

ANCHOR HANDLING & TOWING EQUIPMENT

Anchor Handling/ Towing Winch	ME 75THAHTW Double Drums in Waterfall
AH Drum Capacity	52 mm (L) x 200 m (Dia) SWR, Lower Drum
Tow Drum Capacity	52 mm (L) x 600 m (Dia) SWR, 10 Layers Upper Drum
Spare Reel Drum Capacity	52 mm (L) x 300 m (Dia) SWR, 10 Layers
Line Pull @ First Layer	75 T x 5 m/min, Low Speed
Brake Holding	155 T (Static)
Towing Pin	200 T
Shark Jaw	200 T
Stern Roller	125 T
Fairlead	Nil
Bow Winch	Single Drum, Double Gypsies & Warping Ends
Fwd Tow Winch	300 m x 52 mm SWR (10 Layers), Pull 30 T x 10 m/min (1st Layer Low Speed), Pull 5 T x 30 m/min (1st Layer High Speed), Brake Holding 155 T
Aft Tow Winch	600 m x 52 mm SWR (10 Layers), Pull 75 T x 5 m/min (1st Layer Low Speed), Pull 15 T x 30 m/min (1st Layer High Speed), Brake Holding 155 T

ACCOMMODATION

Berths	2x2, 4x1, 1x2 Berths
Total Pax	38

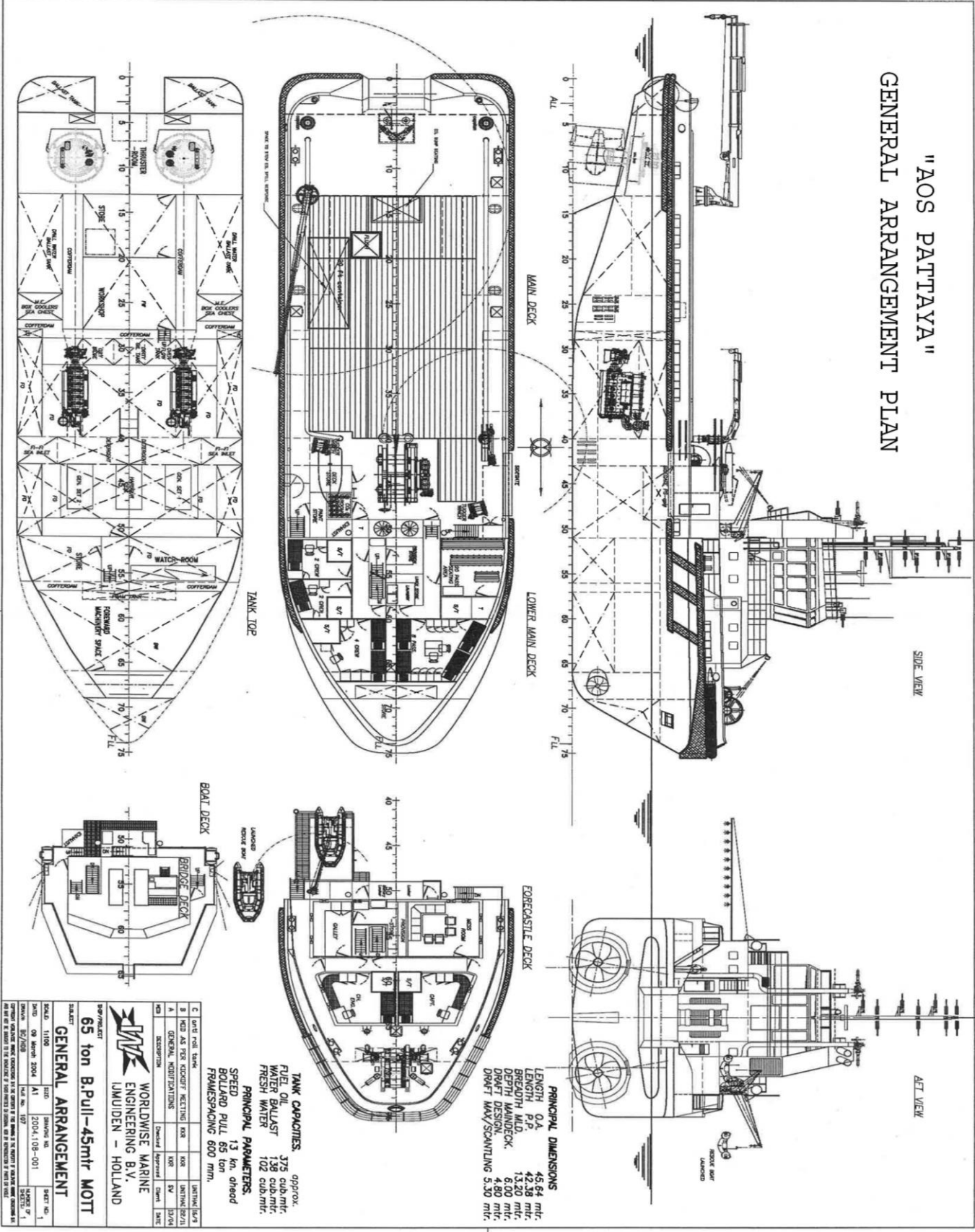
EXTERNAL FIRE-FIGHTING EQUIPMENT

Fi-Fi Notation	FFS PI-100 for 0.3% Mix Ration/Up To 770 L/min
Fi-Fi Monitors	2 x 140 m Throw Length
Fi-Fi Pump	2 x 1200 m ³ /hr

LIFE-SAVING EQUIPMENT

Life Rafts	4 x 20 Men, SOLAS Compliant
Rescue Boat c/w Davit	1 x 6 Men, 40 HP of Outboard Eng, 20 L

"AOS PATTAYA" GENERAL ARRANGEMENT PLAN



GENERAL ARRANGEMENT

FIELD NO.	11700	DATE	15/05/2001
NO. OF SHEETS	2001.108-001	SCALE	AS SHOWN
DESIGNER	WORLDWIDE MARINE ENGINEERING B.V.	APPROVED	[Signature]
CLIENT	WORLDWIDE MARINE ENGINEERING B.V.	DATE	15/05/2001

65 ton B.Pull-45mtr MOTT

C	UNIT	POUL	TANK	UNIT	UNIT	UNIT
B	NO	AS	PER	COOLER	RECTIFY	NO
A	GENERAL	VENTILATIONS	NO	NO	NO	NO
NO	DESCRIPTION	Checked	Approved	Drawn	Scale	Unit

TANK CAPACITIES:
 FUEL OIL: 375 cub.mtr.
 WATER BALLAST: 138 cub.mtr.
 FRESH WATER: 102 cub.mtr.

PRINCIPAL PARAMETERS:
 SPEED: 13 kn. ahead
 BOLLARD PULL: 65 ton
 FRAMESPACING: 600 mm.

PRINCIPAL DIMENSIONS:
 LENGTH O/A: 45.64 mtr.
 LENGTH P/P: 42.88 mtr.
 BREADTH MLD: 13.20 mtr.
 DEPTH MAINDECK: 6.00 mtr.
 DRAFT DESIGN: 4.80 mtr.
 DRAFT MAX/SCANTLING: 5.30 mtr.

