



## EXPRESS 68

Fast Utility Craft/ Crewboat

### PRINCIPAL PARTICULARS

Year Built	2010
Place Built	Penguin Shipyard - Singapore
Design	Flex - 36S
Flag	Indonesia
Length Overall	36.00 m
Length BP	33.62 m
Breadth Moulded	7.60 m
Depth Moulded	3.65 m
Draft (max)	1.88 m
Freeboard (SLL)	1.41 m
Class	DNV.GL
Notation	1A Offshore Service Vessel
GRT/ NRT	239.00 T / 71.00 T
Deadweight	114.35 T

### DECK PARTICULARS

Clear Deck Area	80.00 m <sup>2</sup>
Deck Carrying Load	40.00 T
Deck Strength	2.00 T/m <sup>2</sup>

### PERFORMANCE

Maximum Speed	25 Knots @ 16 T/24hrs
Economic Speed	23 Knots @ 14 T/24hrs

### PROPULSION SYSTEM

Main Engines	3 x Cummins, KTA38-M2, 1007 kW @ 1900 RPM, Total 4050 BHP
Auxiliary Engines	2 x Cummins 6BT5.9DM, 80 kW @ 1500 RPM
Portable Generator	Denko KDE3300, Air-cooled Diesel Engine
Bow Thruster	Petter's Hydraulic Bow Thruster, 45 kW Teco, 50 Hz 3000 RPM Operating Speed 3000 RPM
Propellers	3 x Kort Propellers, 5-Blade
Steering Gear System	2 x Electro Hydraulic Ram
Rudder	2 x Balanced Rudder

### TANK CAPACITIES

Fuel Oil	60.60 m <sup>3</sup> @ 95% fill
Fresh Water	28.10 m <sup>3</sup> @ 95% fill

### DECK EQUIPMENT

Anchor Windlass c/w Bow	Hypac HHAW15-32
-------------------------	-----------------

### ACCOMMODATION

Passenger Seats	70
Crew	10



### EXTERNAL FIRE-FIGHTING EQUIPMENT

Fi-Fi Notation	Equivalent to 1/4 Fi-Fi System c/w Water Spray
Fi-Fi Monitors	600 m <sup>3</sup> /hr, 115 m Throw Length
Fi-Fi Pump	600 m <sup>3</sup> /hr
Oil Dispersant System	V-jet Nozzles (P & S)

### INTERNAL FIRE-FIGHTING & ANTI-POLLUTION EQUIPMENT

Emergency Fire Pump	Matsuka / Yanmar, 30 m <sup>3</sup> /hr @ 35 m Head
CO2 Fi-Fi System	Fixed CO2 System for Engine Room
Fire Detection & Alarm	ARMSTRONG M800 for Living Space & Engine Room

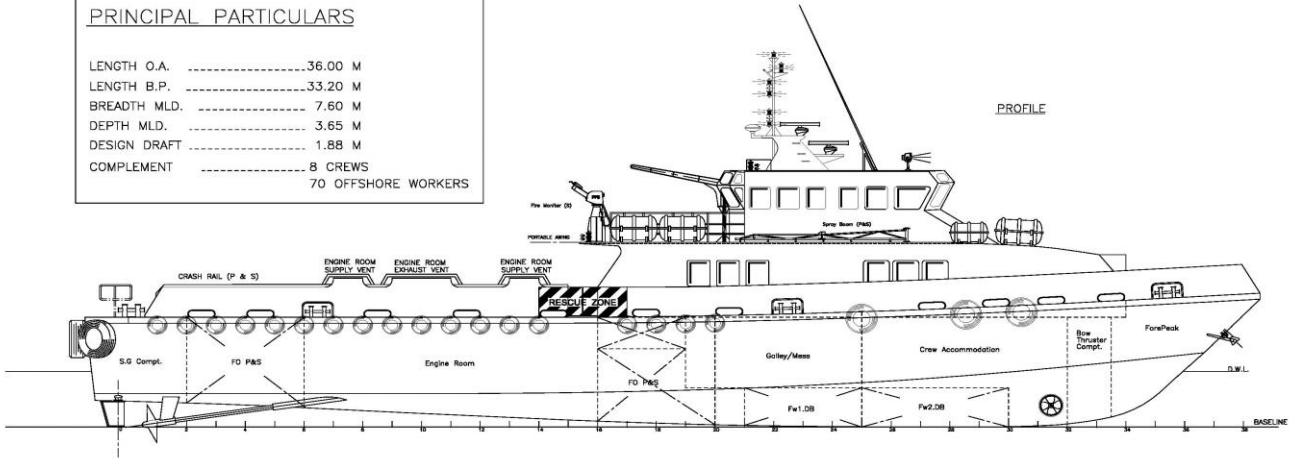
### LIFE-SAVING EQUIPMENT

Life Rafts	6 x 25, 2 x 10 men, SOLAS Compliant
Rescue Boat c/w Davit	1 x 6 men, 25 HP Outboard Engine, Non-SOLAS Compliant

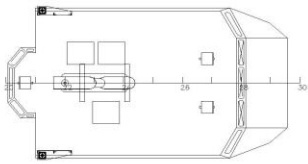
Particulars are believed to be correct but not guaranteed. Owners reserve the rights to amend the specifications without notifications. Particulars are entirely without warranty as to correctness and interested parties must inspect vessel's certificates, drawings or physical inspection of vessel.

**PRINCIPAL PARTICULARS**

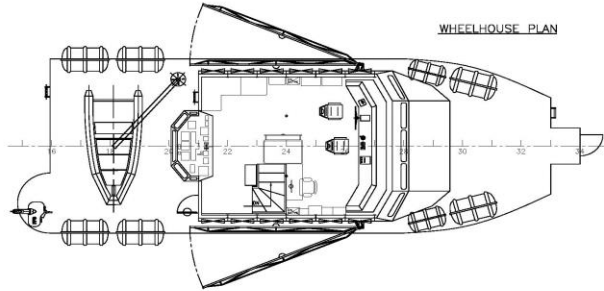
LENGTH O.A. ....36.00 M  
 LENGTH B.P. ....33.20 M  
 BREADTH MLD. ....7.60 M  
 DEPTH MLD. ....3.65 M  
 DESIGN DRAFT ....1.88 M  
 COMPLEMENT .....8 CREWS  
                               70 OFFSHORE WORKERS



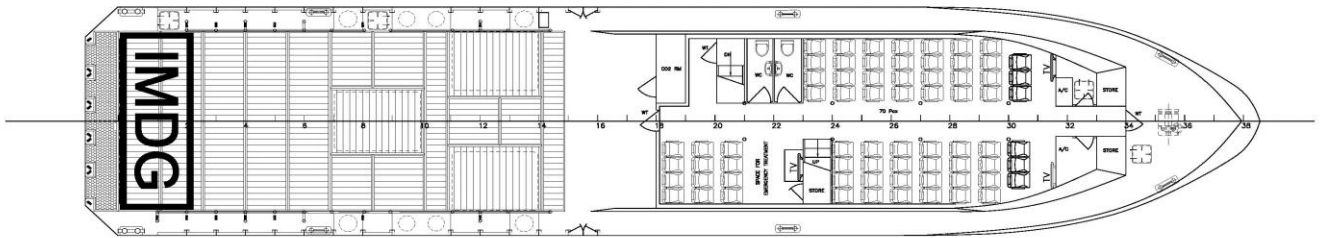
WHEELHOUSE TOP



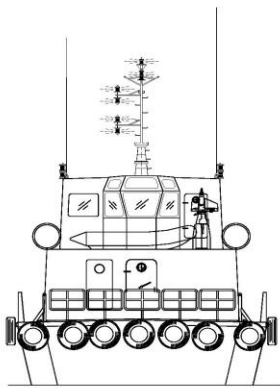
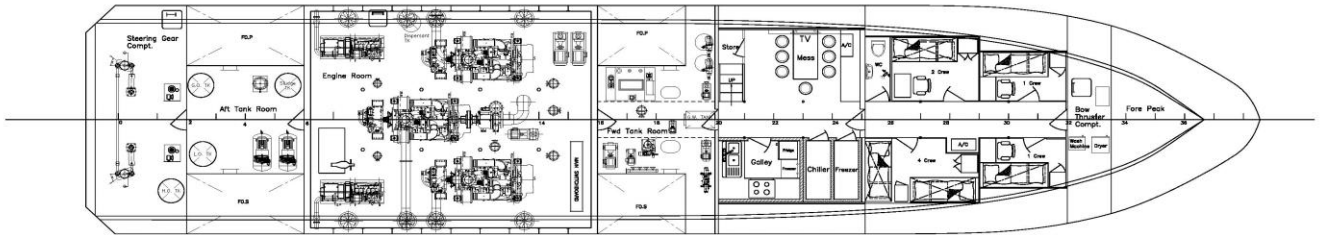
WHEELHOUSE PLAN



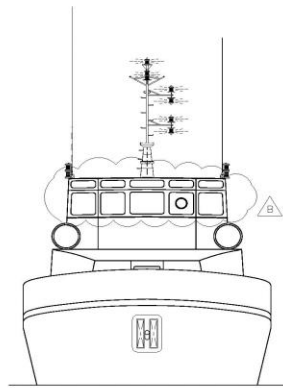
MAIN DECK



BELOW MAIN DECK



STERN VIEW



FRONT VIEW

Rev	B	Update W/H window	03,MAY,2011	ZH	Yard comment
Rev		Modification	Date	Done	Remark
PROJECT: Flex-36 (H178)					
TITLE: GENERAL ARRANGEMENT					
<b>PENGUIN SHIPYARD INTERNATIONAL PTE LTD</b> 18 Tuas Basin Link, Singapore 638784 Tel: 68628332 Fax: 68622150 <small>This drawing and the information contained herein is supplied on the understanding that they are the exclusive property of Penguin Shipyard International Pte Ltd. They must not be used or reproduced in whole or in part, without permission in writing.</small>					
DRAWN:	ZH	DATE:	17,JAN,2011	SCALE:	1:75 (A1)
CHECKED:	PATRICK	DATE:	05,APR,2011	REVISION:	B
DRAWING No.: PBIL-H168-G-01				SHEET: 1 OF 1	