

MEO MONARCH 2

65M 7145BHP DP2 / Offshore Support Vessel

PRINCIPAL PARTICULARS

Year Built	2015
Place Built	Wuchang Ship Yard, China
Design	Focal Marine & Offshore (Focal 680)
Flag	Indonesia
Length Overall	64.80 m
Length BP	60.00 m
Breadth Moulded	16.00 m
Depth Moulded	6.20 m
Draft (max)	5.00 m
Freeboard (SLL)	1209 mm
Class	BV
Notation	I x Hull x Mach, Tug; Anchor Handling Vessel; Fire Fighting Ship 1; Oil Recovery Ship; Supply Vessel - Oil Product FP > 60°C, LHNS; SP 50, Unrestricted Navigation, x DYNAPOS AM/AT R
GRT/ NRT	2491.00 T / 748.00 T
Deadweight	1786.60 T
Bollard Pull	96.60 T

DECK PARTICULARS

Clear Deck Area	435.00 m ²
Deck Carrying Load	600.00 T
Deck Strength	7.00 T/m ²

PERFORMANCE

Maximum Speed	14 Knots @ 25.00 T/24hrs
Economic Speed	10 Knots @ 12.00 T/24hrs

PROPULSION SYSTEM

Main Engines	2 x Daihatsu 8DKM-28e, 3572 BHP, 2666 kW @ 750 RPM, Total 7145 BHP
Auxiliary Engines	3 x Caterpillar C18, 450 kW @ 1500RPM
Emergency Generator	Cummins QSB7-DM, 122 kW @ 1500 RPM
Shaft Generator	3 x Leroy Somer LSAM 51.2VL90, 1600 kW @ 1500 RPM
Rov Generator	Nil
Bow Thruster	2 x Brunvoll CPP, 10 T Thrust
Stern Thruster	Brunvoll CPP, 10 T Thrust
Propellers	2 x NGC CPP in Kort Nozzles, NCP85
Steering Gear System	2 x Electro Hydraulic Interfaced w/ DP system, 45 deg High Lift "Flap" Type
Rudder	2 x Electro Hydraulic Interfaced w/ DP system, 45 deg High Lift "Flap" Type

TANK CAPACITIES

Fuel Oil	530.00 m ³
Fresh Water	367.00 m ³
Drill Water / Ballast	584.80 m ³
Liquid Mud / Brine	380.30 m ³
Base Oil	378.60 m ³
Bilge	13.20 m ³
Dry bulk	150.00 m ³ , 4 x 37.50 m ³ per tank



CARGO DISCHARGE CAPACITIES

Fuel Oil Pump	100 m ³ /hr @ 60 m head
Fresh Water Pump	100 m ³ /hr @ 70 m head
Drill Water Pump	100 m ³ /hr @ 70 m head
Liquid Mud Pump	2 x 70 m ³ /hr @ 70 m head
Brine Pump	2 x 70 m ³ /hr @ 70 m head
Bilge/Ballast/Fire/GS	100 m ³ /hr @ 70 m head
Dry Bulk Compressor	2 x 780 m ³ /hr @ 80 PSI

DP SYSTEM

DP2, Kongsberg, 2 DGPS, Fanbeam, 3 Anemometers, 3 Motions Sensors, Independent Joystick

DECK EQUIPMENT

Anchor & Chain	2 x HY-14 HHP Anchor, 1900 / 1905 kg
Tugger Winch	2 x Electro Hydraulic 10 T @ 15 m/min, Drum Capacity 250 m x 22 mm dia
Capstan	2 x Electro Hydraulic 10 T @ 15 m/min
Anchor Windlass c/w Bow	Mac Gregor Electro hydraulic c/w Double gypsies & warping ends
Crane	SWL 2 T @ 15 m radius

ANCHOR HANDLING & TOWING EQUIPMENT

AH/Towing Winch	MacGregor Hydraulic Anchor Handling / Towing Winch 1500m x 64mm Dia SWR @ 10 layers
AH/Towing Drum Cap.	1500 m x 64 mm
Spare Reel Drum Cap.	1500 m (L) x 64 mm (Dia)
Line Pull @ First Layer	150 T at low speed
Brake Holding	250 T
Towing Pin	2 x SWL 250 T
Shark Jaw	SWL 250 T
Stern Roller	SWL 250 T, 4.4 m (L) x 1.7 m (Dia)

ACCOMMODATION

Berths	8 x 4, 5 x 2, 8 x 1 Berths
Total Pax	50

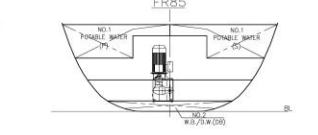
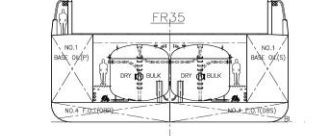
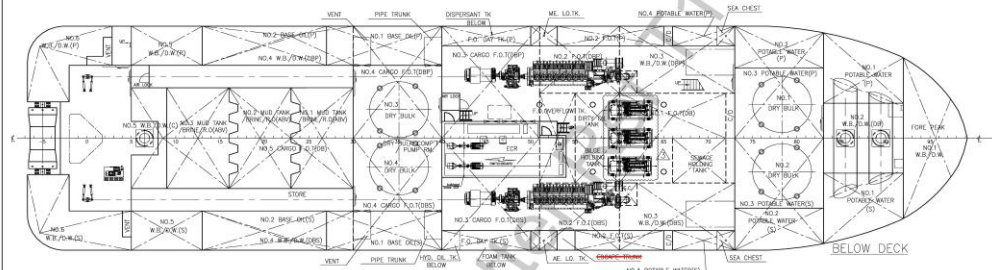
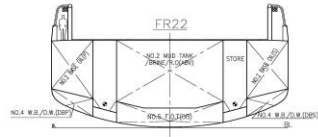
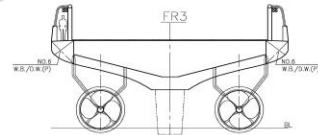
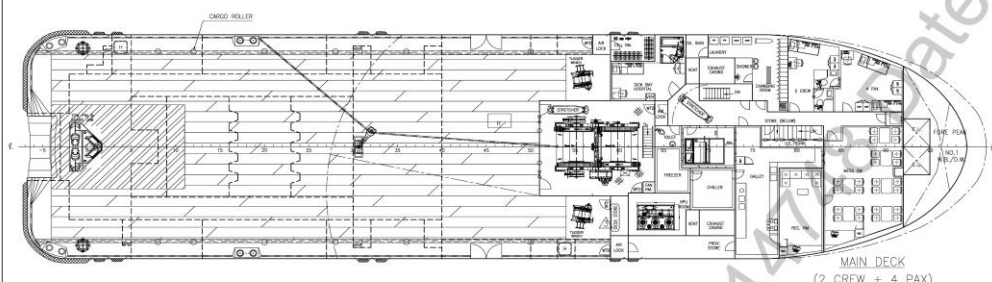
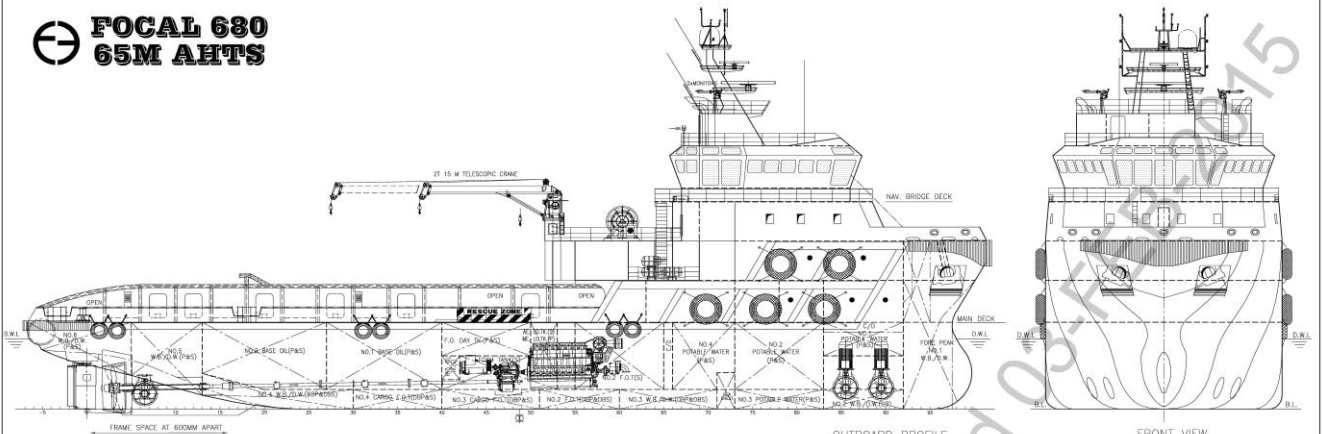
EXTERNAL FIRE-FIGHTING EQUIPMENT

Fi-Fi Notation	Fire Fighting Ship 1
Fi-Fi Monitors	2 x 1200 m ³ /hr, 120 m Throw Length
Fi-Fi Pump	2 x 1860 m ³ /hr

LIFE-SAVING EQUIPMENT

Life Rafts	6 x 25 men, SOLAS Compliant
Rescue Boat c/w Davit	1 x 6 men, 21.70 kW @ 1095 RPM, Inboard Eng, 50 L Fuel, SOLAS Compliant

FOCAL 680 65M AHTS



PRINCIPAL PARTICULARS

LENGTH OA	64.80 M
LENGTH BP	58.50 M
BEAM MLD.	16.00 M
DEPTH MLD.	6.20 M
DRAFT DESIGNED	5.00 M
DRAFT SCANTLING	5.20 M
COMPLEMENT	50 MEN

MAIN ENGINE

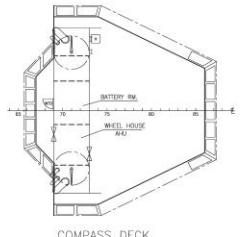
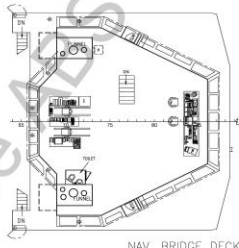
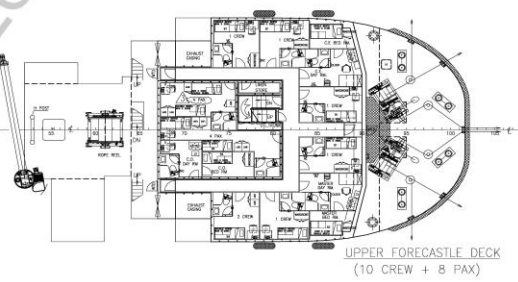
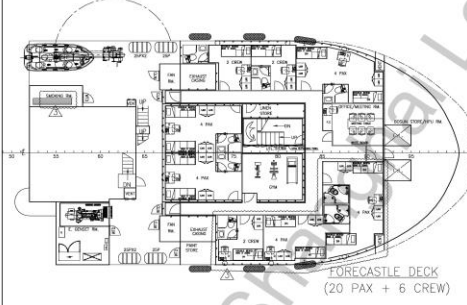
MAIN ENGINE	2 x 2,666 KW
TRIAL SPEED	13 KTS
BOLLARD PULL	90 T

APPROXIMATE CARGO CAPACITIES

DEADWEIGHT	1,600 T
CARGO DECK AREA	435 M ² @ 7 T/M ²
DECK CARGO	600 T

SHIP F.O./CARGO F.O.

SHIP F.O./CARGO F.O.	550 M ³
DW/WB	500 M ³
BASE OIL	350 M ³
POTABLE WATER	300 M ³
MUD/BRINE/R.O.	370 M ³
CEMENT	150 M ³



CLASS: ABS A1 OFFSHORE SUPPORT VESSEL
 (AH, FOW, SUPPLY-HULL, FFV 1, OSR-C1) SPS
 ANS
 SPS-2
 (B)(70)

THIS DOCUMENT AND THE CONTENTS ARE COPYRIGHT AND REMAIN PROPERTY OF FOCAL MARINE & OFFSHORE. THEY MUST NOT BE COPIED IN WHOLE OR IN PART TO ANY THIRD PARTY FOR ANY PURPOSE WITHOUT PRIOR WRITTEN PERMISSION FROM FOCAL MARINE & OFFSHORE. THE RECEIPT OF THIS DOCUMENT IMPLIES ACCEPTANCE OF THIS CONDITION.

3	AMENDED AS PER OWNER COMMENTS	2F	JAN-17-2015
REV NO.	REVISION DESCRIPTION	BY	DATE
OWNER	MICYLN EXPRESS OFFSHORE		
BUILDER	WUCHANG SHIPBUILDING INDUSTRY HULL NO.: A37NA/A37BM		
PROJECT	64.8M ANCHOR HANDLING TUG / OIL RECOVERY / SUPPLY VESSEL "FOCAL 680"		
APPROVE	FWO TITLE	JOB NO.:	A-1777
VERIFY		DWG NO.:	A-1777-001
CHECKER		SCALE:	1:150 (A1)
DRAWER		CLASS:	ABS
FOCAL MARINE & OFFSHORE SINGAPORE TEL: 65-21-58703786 SINGAPORE TEL: 65-68481387 FAX: 65-21-60313365 FAX: 65-69481281			

