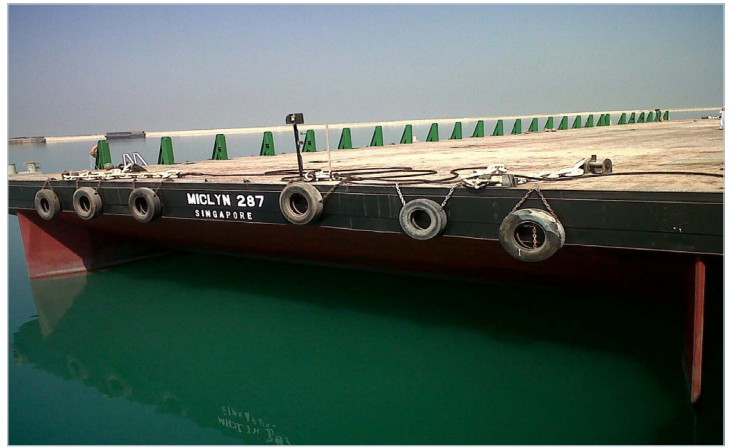


# MICLYN 287

Flat Top Deck Cargo Barge

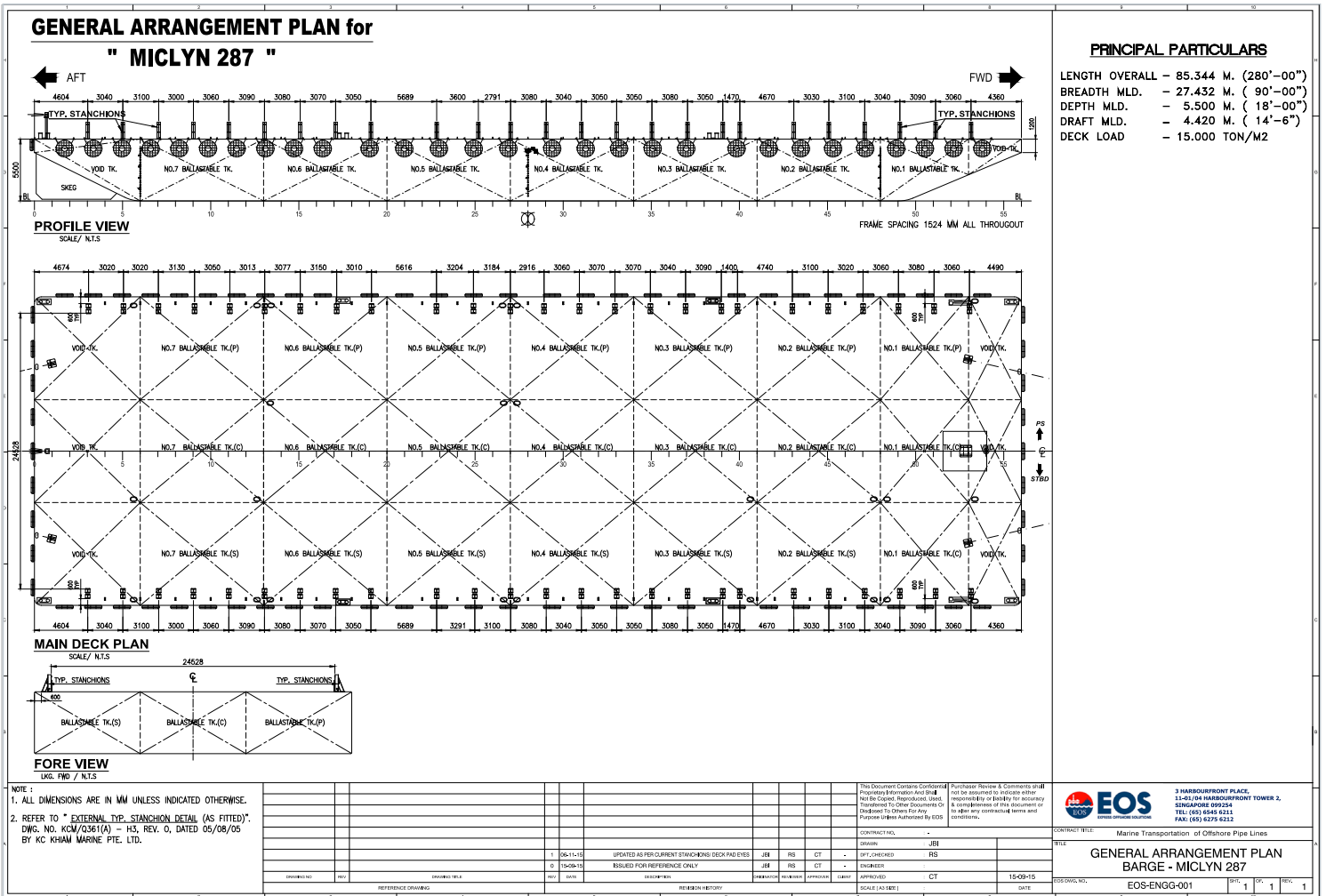
## GENERAL

Year Built	2006
Flag / Port of Registry	Singapore / Singapore
Official Number	392266
Class / classification	Bureau Veritas
GRT / NRT	3,320 t / 996 t
Length Overall	280 ft (85.34 m)
Breadth	90 ft (27.43 m)
Depth Loaded	18 ft (5.50 m)
Draft Loaded	14.5 ft (4.39 m)
Dead Weight	8,000 t (approx.)
Deck Loading	15 t / m <sup>2</sup>
Transverse Bulkhead	Eight (8)
Longitudinal Bulkhead	Two (2)



## DECK EQUIPMENT

Anchor Winch	1 x hand operated emergency anchor winch
Anchor	1 x 2,100 kg stockless bower anchor
Smit Brackets	4 x smit towing brackets - P&S, fwd and aft
Stanchions	26 stanchions on each side
Navigation Lights	1 set solar type, P&S at fwd and aft
Mooring Bollards	4 sets double mooring bollards each side (deck)



Particulars are believed to be correct but not guaranteed. Owners reserve the rights to amend the specifications without notifications. Particulars are entirely without warranty as to correctness and interested parties must inspect vessel's certificates, drawings or physical inspection of vessel.