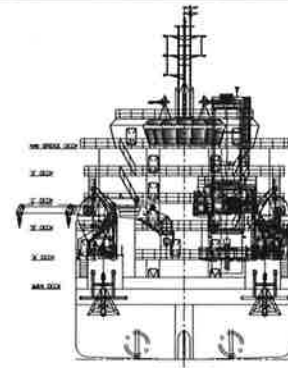
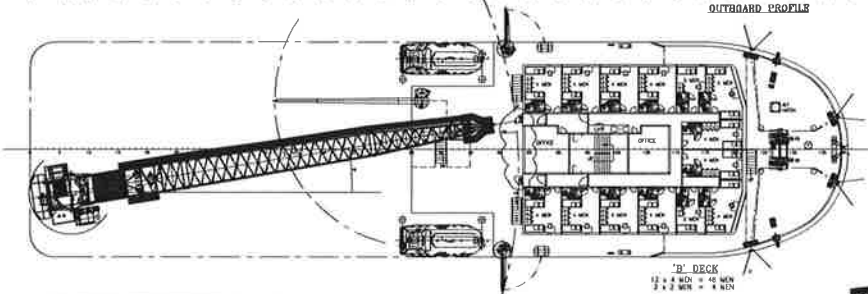


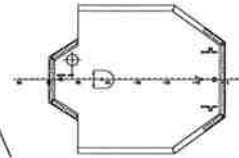
OUTBOARD PROFILE



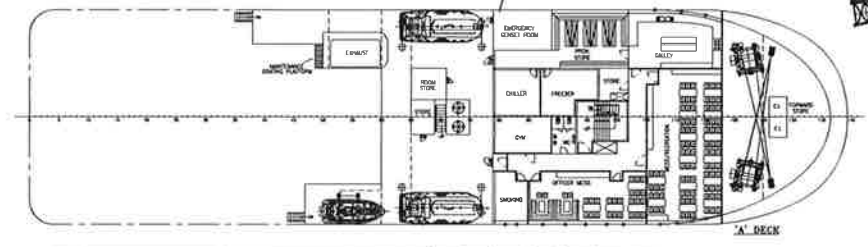
STERN VIEW



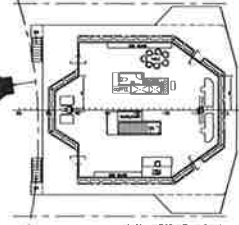
'B' DECK
12 x 4 MEN = 40 MEN
7 x 2 MEN = 4 MEN



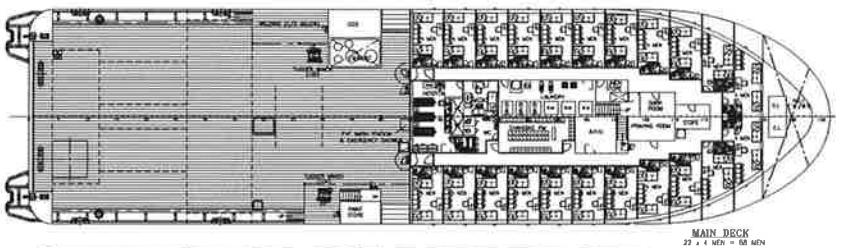
WHEEL HOUSE TOP



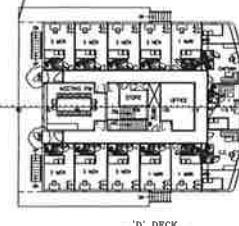
'A' DECK



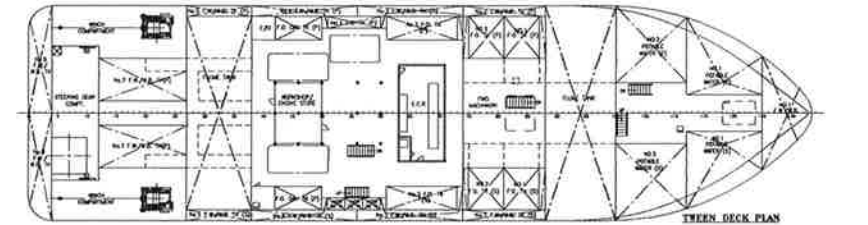
NAV. BRIDGE DECK



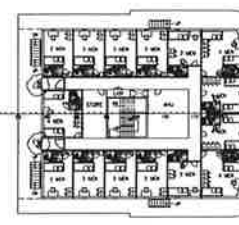
MAIN DECK
23 x 4 MEN = 68 MEN



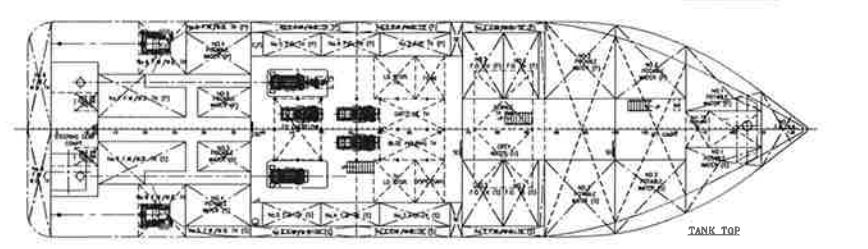
'D' DECK
6 x 2 MEN = 12 MEN
7 x 2 MEN = 14 MEN
TOTAL = 26 MEN



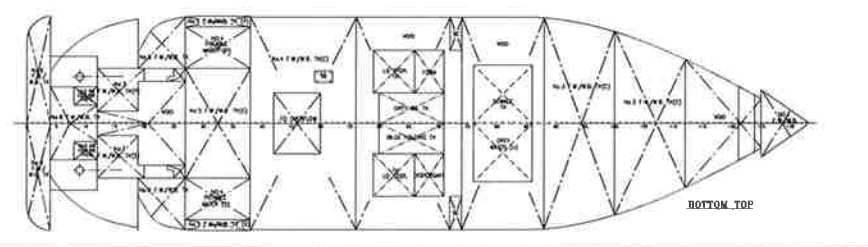
THIRD DECK PLAN



'C' DECK
10 x 2 MEN = 20 MEN
3 x 1 MEN = 3 MEN
TOTAL = 23 MEN



TANK TOP



BOTTOM TOP

PRINCIPAL PARTICULARS

LENGTH O.A.	83.60m
LENGTH W.L.	79.60m
BEAM M.L.D.	22.00m
DEPTH M.L.D.	7.20m
DRAFT DESIGNED/MAX.	5.20m/5.50m
COMPLEMENT	200 MEN
CARGO DECK SPACE	700m ² (APPROX)
POTABLE WATER	1450m ³ (APPROX)
F.O.	925m ³ (APPROX)
FOAM	12m ³ (APPROX)
DISPERSANT	12m ³ (APPROX)

110114 MODIFIED AS PER DESIGN PROGRESS	C	SP
110113 MODIFIED AS PER DESIGN PROGRESS	B	JCA1
110112 MODIFIED AS PER DESIGN PROGRESS AND CLASS COMMENTS	C	JCP1
110111 MODIFIED AS PER DESIGN PROGRESS	B	JCP1
110110 MODIFIED AS PER DESIGN PROGRESS	A	JCP1
DATE	MODIFICATION	REV. BY.
SHIP: 83.6m OFFSHORE WORK/ACCOMMODATION VESSEL		
TITLE: GENERAL ARRANGEMENT		
BUILDER: SHANGHAI YANCHENG SHIPBUILDING AND SHIPREPAIR CO. LTD.	YARD NO.	
OWNER:		HT102208 HT102208
CLASS: ABS - A1, HANGS OFFSHORE SUPPORT VESSEL (OFF CAPABLE, SP/SC/DA)	CLASS	
MTX Marine Design & Consultants Pte Ltd	DATE	MODEL NO.
DATE: 4 August 2008	SCALE: 1:200	REV.:
DRWING: JOHNSON	SCALE: 1:200	REV.:
CHECK: JOHNSON	SCALE: 1:200	REV.:
DATE: 11/11/2008	SCALE: 1:200	REV.:
DATE: 11/11/2008	SCALE: 1:200	REV.: