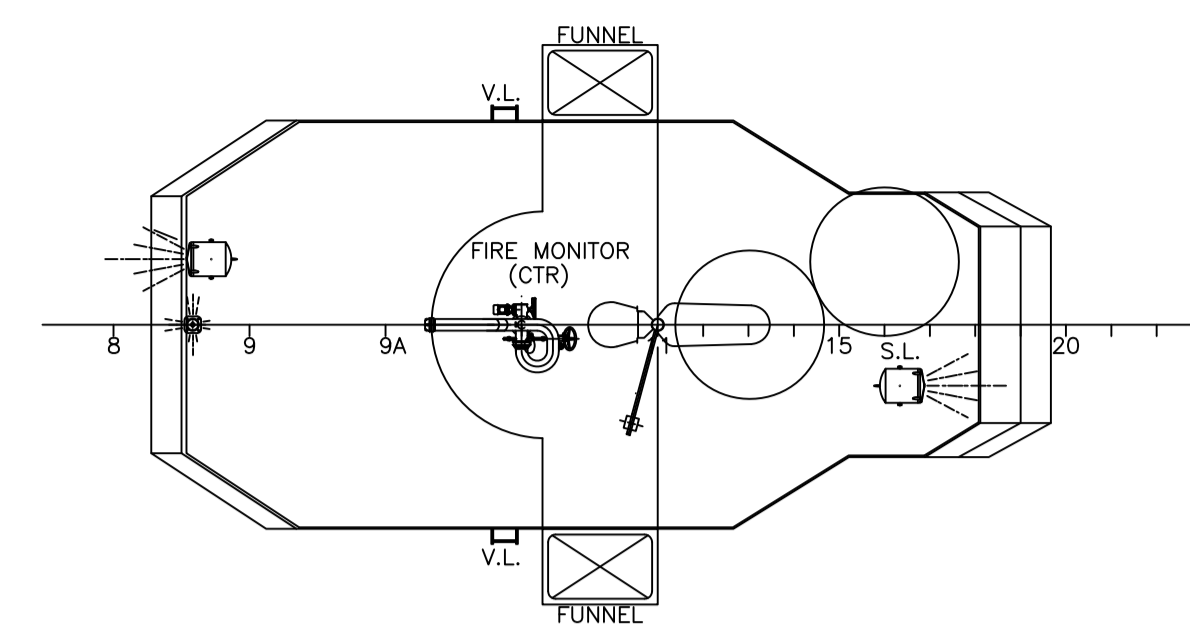
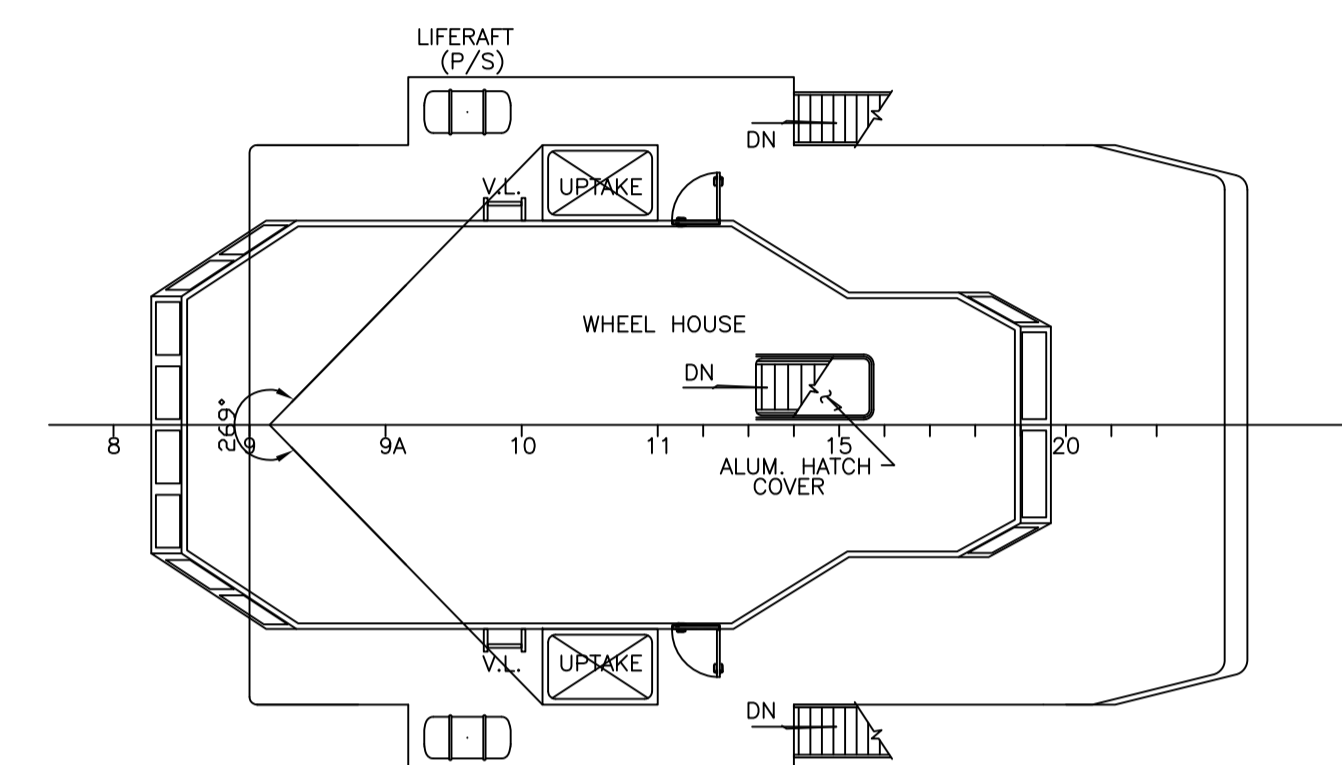


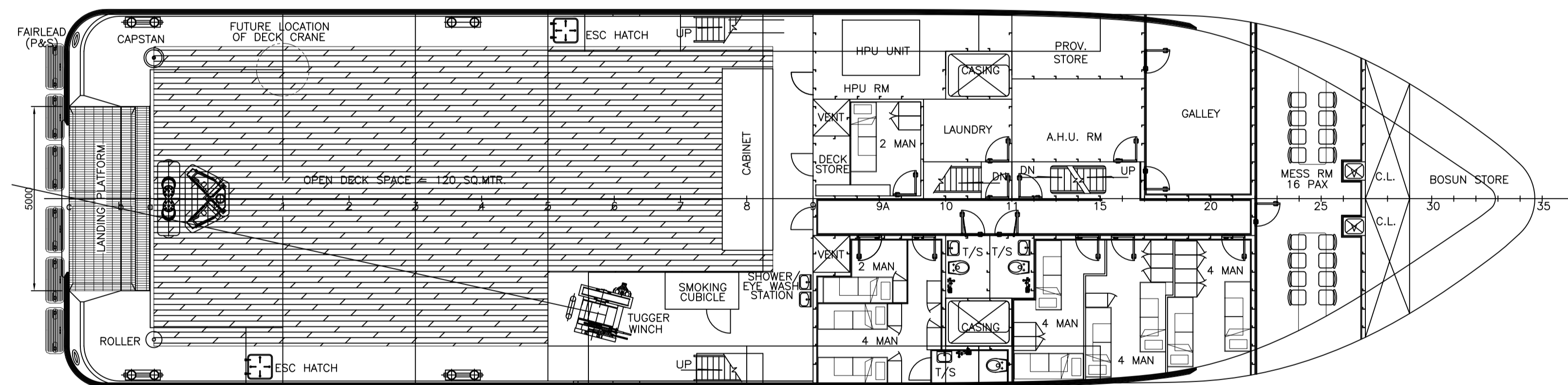
PROFILE



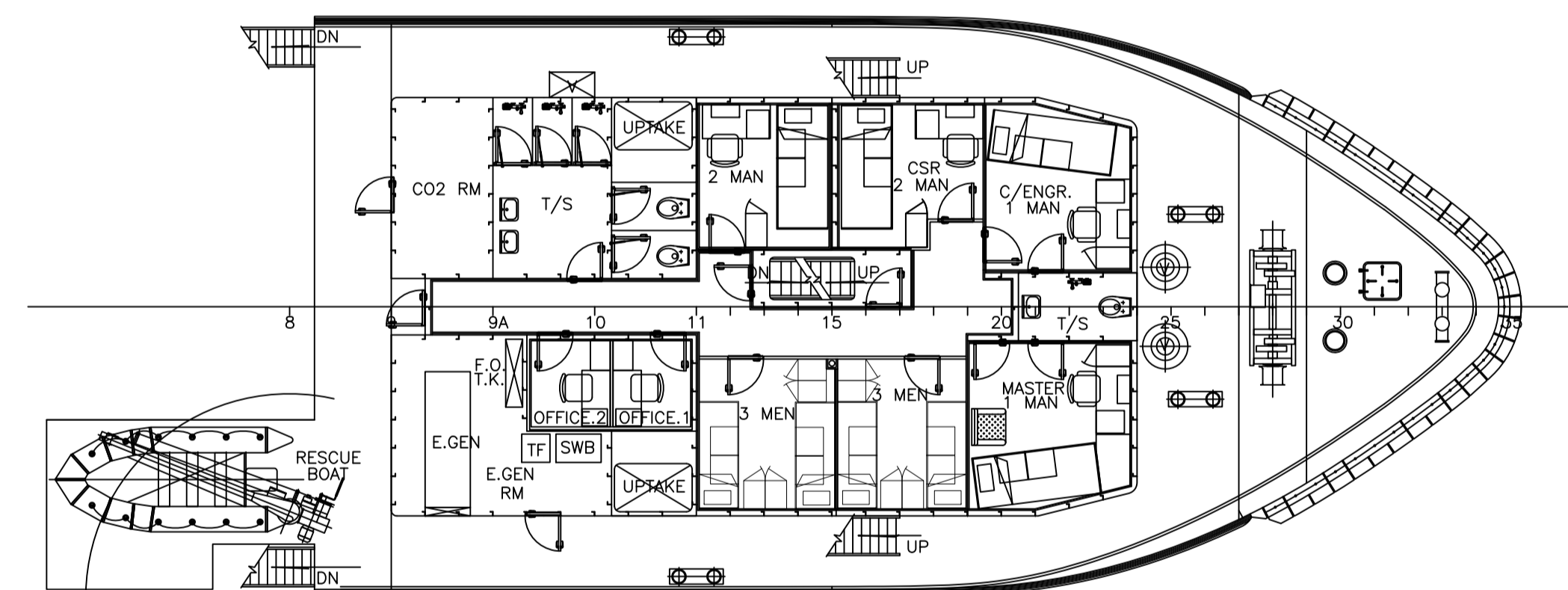
FLYBRIDGE DECK



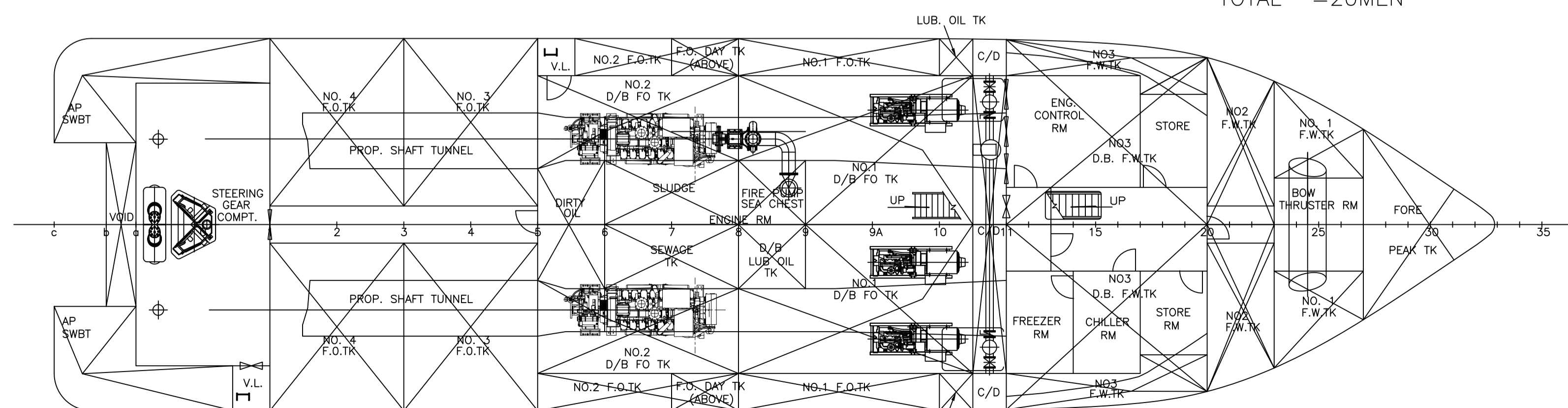
NAV. BRIDGE DECK



MAIN DECK PLAN  
 2x2MAN = 4MEN  
 4x4MAN = 16MEN  
 TOTAL = 20MEN



FORECASTLE DECK  
 2x1MAN = 2MEN  
 2x2MAN = 4MAN  
 2x3MAN = 6MEN  
 TOTAL = 12MEN



BELOW MAIN DECK PLAN

PRINCIPAL PARTICULARS

LENGTH O.A.	39.80 M
LENGTH W.L.	38.13 M
LENGTH B.P.	35.33 M
BREADTH MOULDED	10.00 M
DEPTH MOULDED	4.20 M
DRAFT DESIGNED	3.50 M
COMPLEMENT	32 CREW/ PERSONNEL

DESCRIPTION	REV	DRN BY	CHK BY	DATE
CLIENT: MICLYN EXPRESS OFFSHORE				
TITLE: GENERAL ARRANGEMENT PLAN				
SHIP NAME: MICLYN ONYX				
CONTRACT NO.:		DRAWING NO.: MEO-ONYX-GAP-001		
DRAWN: DCF		REV. NO.: 0		SCALE: 1:100
CHECKED: IJR		SHEET NO.: 1 OF 1		SIZE: A1
APPROVED: LCH		DATE: 18 MARCH 2014		

Main Office (Singapore):  
 No.3 Harbour Front Place #11-01/04 Harbour Front Tower 2  
 Singapore 099254  
 Tel: (65) 63452111 Fax: (65) 62756212  
[www.miclynexpressoffshore.com](http://www.miclynexpressoffshore.com)

This document contains Confidential Proprietary information and shall not be Copied, Reproduced, Used, Transferred to other Documents or Disclosed to others for any purpose unless Authorized by MEO.