

EOS 281

Flat Top Deck Cargo Barge

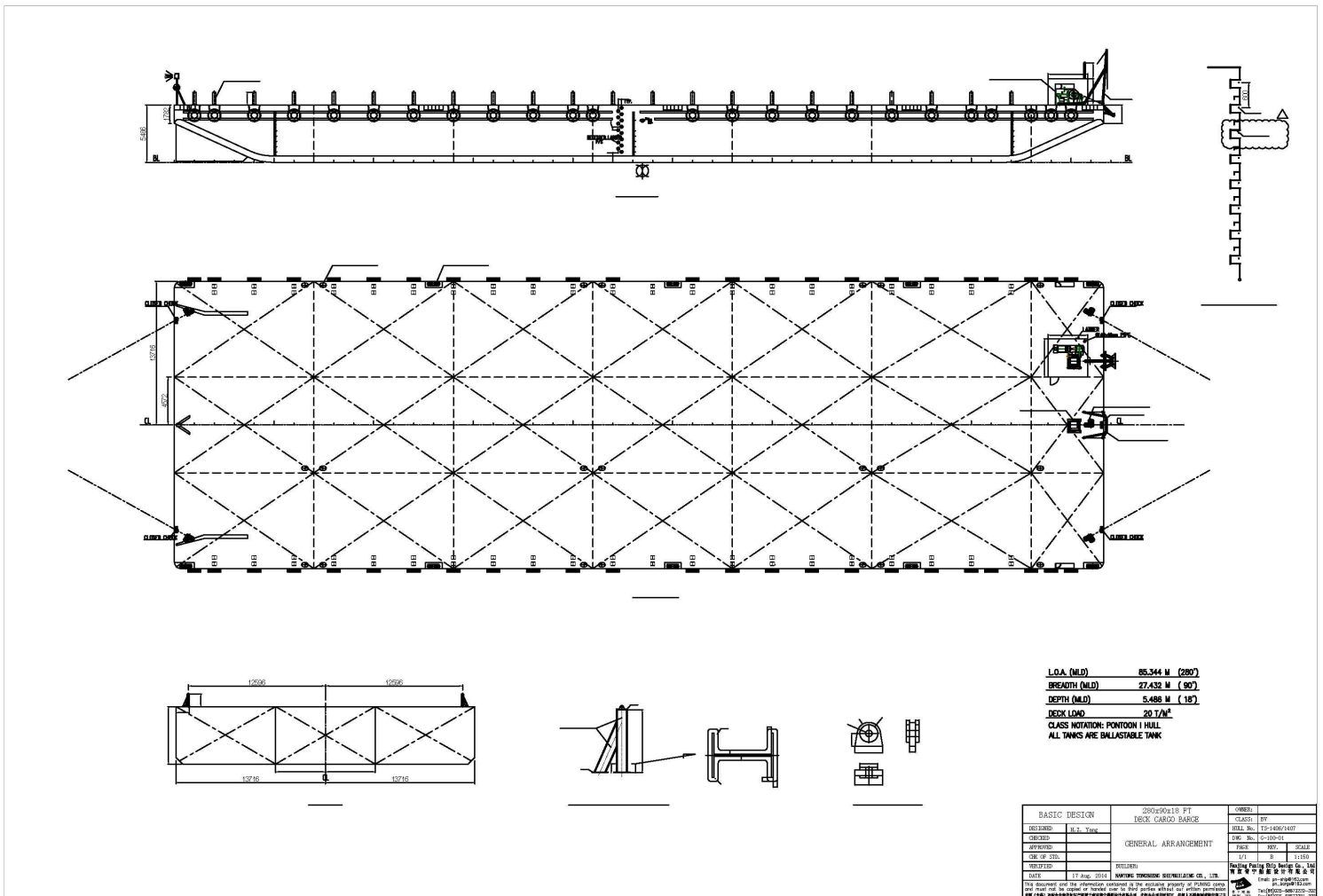
GENERAL

Year Built	2014
Flag / Port of Registry	Indonesia
Official Number	399672
Class / classification	Bureau Veritas + Biro Klasifikasi Indonesia
GRT / NRT	3,408 t / 1,022 t
Length Overall	280 ft (85.34 m)
Breadth	90 ft (27.43 m)
Depth Loaded	18 ft (5.48 m)
Draft Loaded	14.1 ft (4.29 m)
Dead Weight	7,800 t (approx.)
Deck Loading	20 t / m ²
Transverse Bulkhead	Six (6)
Longitudinal Bulkhead	Two (2)



DECK EQUIPMENT

Anchor Winch	1 x 10 t anchor windlass (Diesel Driven)
Anchor	1 x 1,920 kg stockless bower anchor
Smit Brackets	4 x smit towing brackets - P&S, fwd and aft
Stanchions	24 stanchions on each side
Navigation Lights	1 set solar type, P&S at fwd and aft
Mooring Bollards	10 x mooring bollards of dia. 10" (recessed)
Other	1 x 5 t hand winch, 4 x closed Chock, 124 x zine anode, 1 x chain stopper



Particulars are believed to be correct but not guaranteed. Owners reserve the rights to amend the specifications without notifications. Particulars are entirely without warranty as to correctness and interested parties must inspect vessel's certificates, drawings or physical inspection of vessel.