

# EOS 4002

## Self Ballastable Deck Cargo Barge

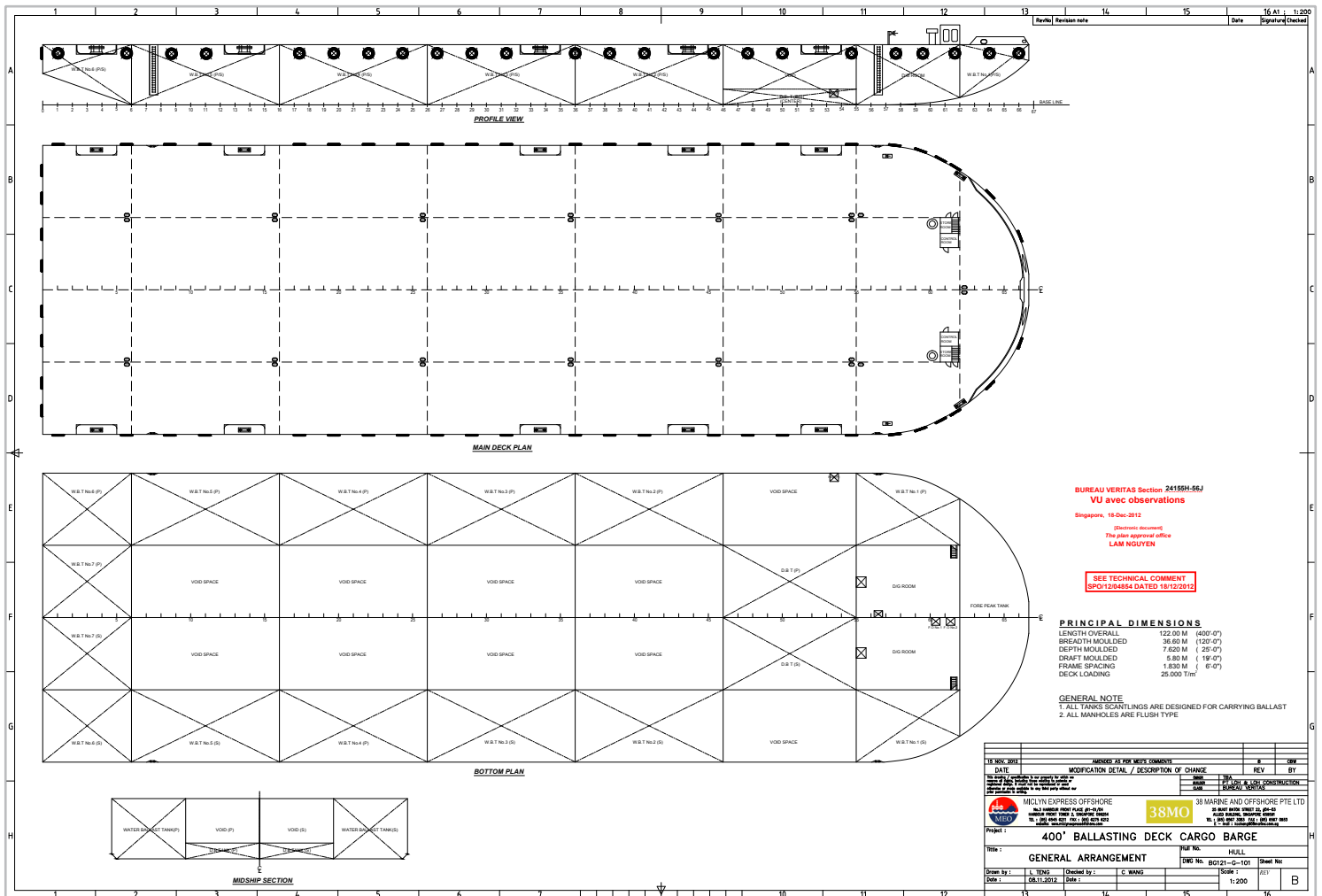
### GENERAL

Year Built	2013
Flag / Port of Registry	Singapore / Singapore
Official Number	3998831
Class / classification	Bureau Veritas
GRT / NRT	9,128 t / 2,738 t (approx.)
Length Overall	400 ft (122.00 m)
Breadth	120 ft (36.60 m)
Depth Loaded	25 ft (7.62 m)
Draft Loaded	19 ft (5.80 m)
Dead Weight	20,000 t (approx.)
Deck Loading	25 t / m <sup>2</sup>
Transverse Bulkhead	Seven (7)
Longitudinal Bulkhead	Three (3)



### DECK EQUIPMENT

Anchor Winch	1 x 4 t capacity electric (Diesel Driven)
Anchor	1 x 3,500 kg stockless bower
Smit Brackets	2 x smit towing brackets - P&S, fwd and aft
Stanchions	NIL
Navigation Lights	1 set solar type, P&S at fwd and aft
Mooring Bollards	12 x double mooring bollards 12" NB
Other	2 x Diesel Generator @ 290 kW



Particulars are believed to be correct but not guaranteed. Owners reserve the rights to amend the specifications without notifications. Particulars are entirely without warranty as to correctness and interested parties must inspect vessel's certificates, drawings or physical inspection of vessel.