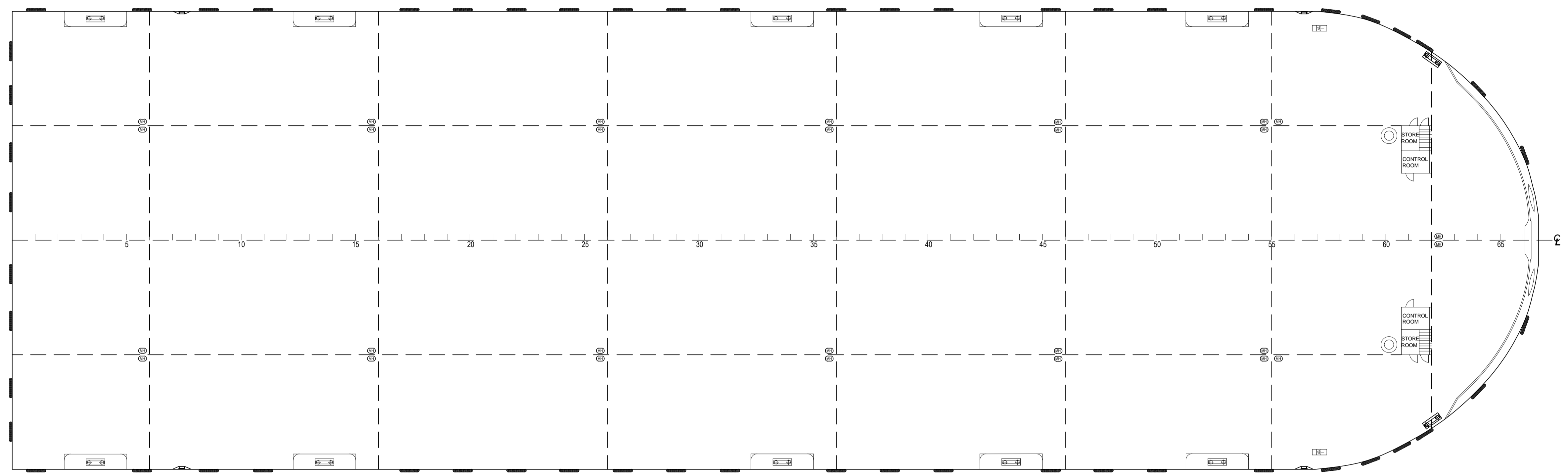
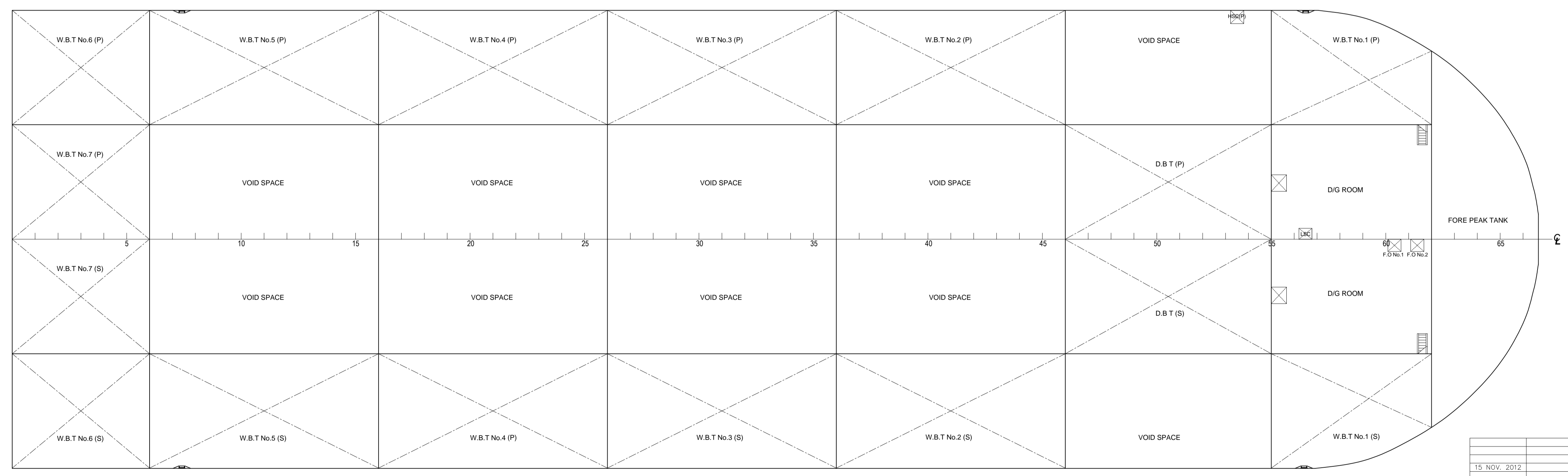


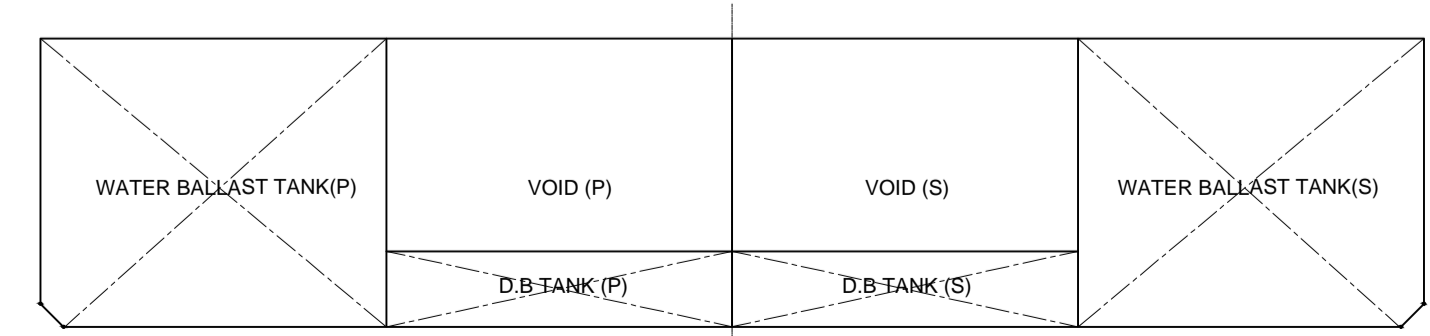
PROFILE VIEW



MAIN DECK PLAN



BOTTOM PLAN



MIDSHIP SECTION

BUREAU VERITAS Section 24155H-56J
VU avec observations
 Singapore, 18-Dec-2012
 [Electronic document]
 The plan approval office
LAM NGUYEN

SEE TECHNICAL COMMENT
SPO/12/04854 DATED 18/12/2012

PRINCIPAL DIMENSIONS

LENGTH OVERALL	122.00 M (400'-0")
BREADTH MOULDED	36.60 M (120'-0")
DEPTH MOULDED	7.620 M (25'-0")
DRAFT MOULDED	5.80 M (19'-0")
FRAME SPACING	1.830 M (6'-0")
DECK LOADING	25.000 T/m ²

GENERAL NOTE
 1. ALL TANKS SCANTLINGS ARE DESIGNED FOR CARRYING BALLAST
 2. ALL MANHOLES ARE FLUSH TYPE

15 NOV. 2012	AMENDED AS PER MEO'S COMMENTS	B	CBW
DATE	MODIFICATION DETAIL / DESCRIPTION OF CHANGE	REV	BY
<small>This drawing / specification is our property for which we reserve all rights, including those relating to patents or registered design. It must not be reproduced or used otherwise or made available to any third party without our prior permission in writing.</small>			
OWNER: TBA BUILDER: PT LOH & LOH CONSTRUCTION CLASS: BUREAU VERITAS		38MO 38 MARINE AND OFFSHORE PTE LTD 25 BUKIT BATOK STREET 22, #04-03 ALLEED BUILDING, SINGAPORE 659591 TEL : (65) 6567 3083 FAX : (65) 6567 0933 E - mail : kochang@38marine.com.sg	
Project : 400' BALLASTING DECK CARGO BARGE			
Title : GENERAL ARRANGEMENT		Hull No. HULL	
Drawn by : L TENG		DWG No. BG121-G-101	
Date : 08.11.2012		Sheet No. :	
Checked by : C WANG		Scale : 1:200	
Date :		REV B	