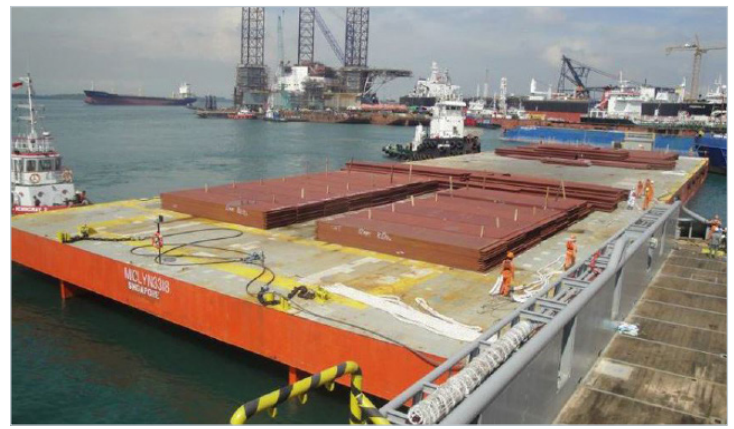


MICLYN 3318

Flat Top Deck Cargo Barge

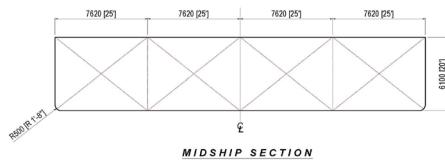
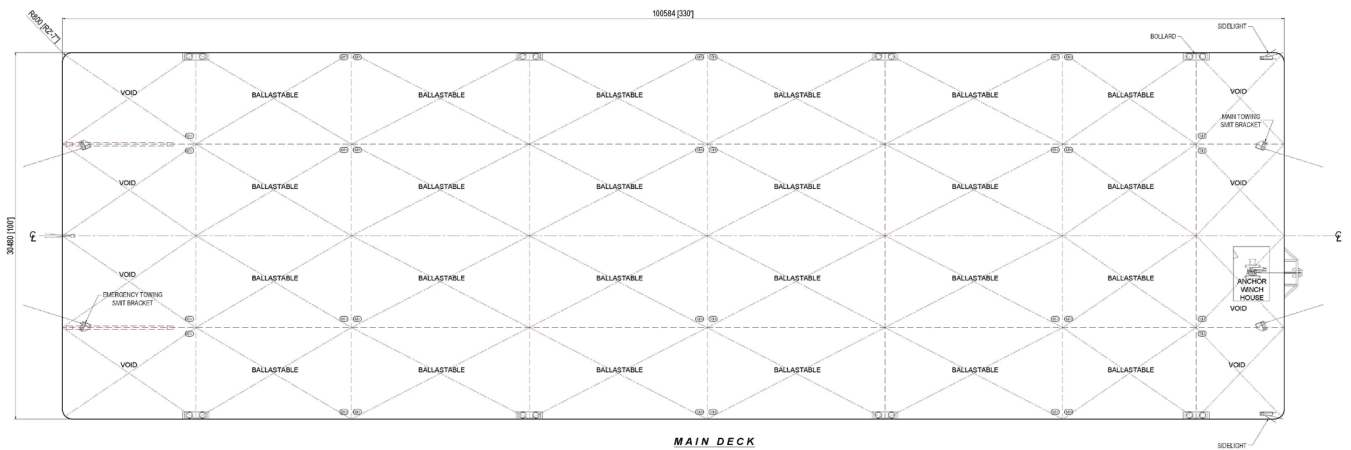
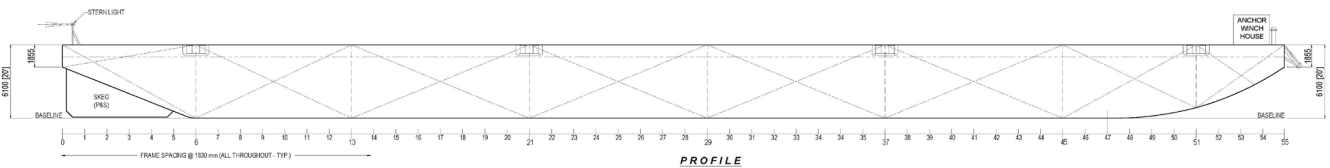
GENERAL

Year Built	2007
Flag / Port of Registry	Singapore / Singapore
Official Number	398256
Class / classification	Bureau Veritas
GRT / NRT	4,953 t / 1,485 t
Length Overall	330 ft (100.58 m)
Breadth	100 ft (30.48 m)
Depth Loaded	20 ft (6.10 m)
Draft Loaded	15 ft (4.72 m)
Dead Weight	11,400 t (approx.)
Deck Loading	15 t / m ²
Transverse Bulkhead	Seven (7)
Longitudinal Bulkhead	Three (3)



DECK EQUIPMENT

Anchor Winch	1 x 10 t anchor windlass (Diesel Driven)
Anchor	1 x 2,100 kg stockless bower anchor
Smit Brackets	4 x smit towing brackets - P&S, fwd and aft
Stanchions	NIL
Navigation Lights	1 set solar type, P&S at fwd and aft
Mooring Bollards	8 sets double mooring bollards each side (recessed)
Other	Barge is all welded steel construction with flush main deck and twin skegs.



PRINCIPAL DIMENSIONS

LENGTH OVERALL	100.584 M (330'-0")
BREADTH MOULDED	30.480 M (100'-0")
DEPTH MOULDED	6.100 M (20'-0")
DRAFT MOULDED	4.500 M (14'-9")
FRAME SPACING	1.830 M (6'-0")
DECK LOADING	15,000 T/m ²

NOTATION

BV, Hull Pontoon - Unrestricted Navigation

GENERAL NOTE

1. ALL TANKS SCANTLING IS DESIGNED FOR CARRYING BALLAST
2. ALL MANHOLES ARE FLUSH TYPE

AS-BUILT ARRANGEMENT	1	DCF	LJR	03-07-2013
DESCRIPTION	REV	DEV BY	CHK BY	DATE
CLIENT: MICLYN EXPRESS OFFSHORE				
TITLE: OFFSHORE FLAT TOP CARGO BARGE				
SHIP NAME: MICLYN 3318				
CONTRACT NO:	DRAWING NO:		MEO-COMM-ENRGG-0003	
DRAWN: D FIGUERAS	REVNO: 1	SCALE: 1:100		
CHECKED: KOK SOON HEE	SHEET NO: 1 OF 1	SIZE: A1		
APPROVED: HENDRAWANG HARI	DATE: 20 NOVEMBER 2011			

Particulars are believed to be correct but not guaranteed. Owners reserve the rights to amend the specifications without notifications. Particulars are entirely without warranty as to correctness and interested parties must inspect vessel's certificates, drawings or physical inspection of vessel.