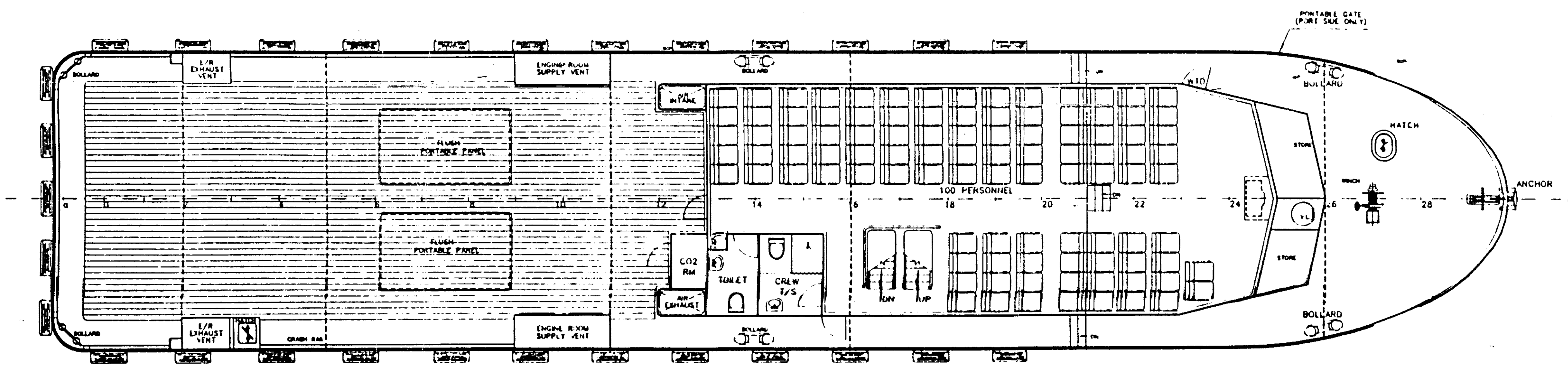
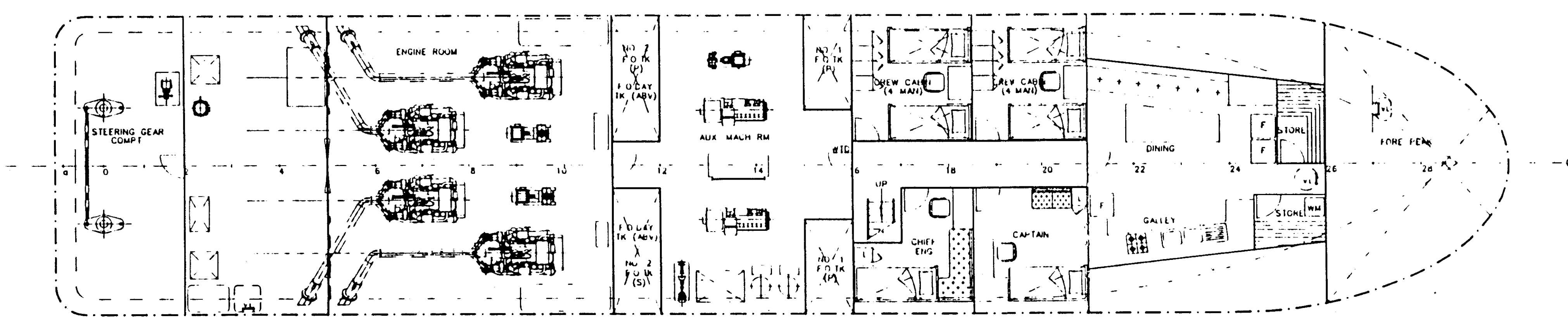


PROFILE



MAIN DECK



BELOW MAIN DECK

DIPERIKSA UNTUK TANDA KELAS : A 100 (P) ALUMINIUM CREW BOAT
PRINCIPAL PARTICULARS
 LENGTH O.A. 36.60 M
 LENGTH W.L. 34.40 M
 LENGTH B.P. 33.40 M
 BREADTH MLD. 7.60 M
 DEPTH MLD. 3.30 M
 SUMMER DRAFT (EXT) 1.242 M
 COMPLEMENT 9 CREW

BIRO KLASIFIKASI INDONESIA 100 PERSONNEL
SEEN
 DIKETAHUI
 Nomor : 03024316
 Nomor : 04 FEB 1999
 JAKARTA

06 MAR 1998

NO	MODIFICATIONS	BY	DATE
SHIPTECH NAVAL ARCHITECTS 180 Paya Lebar Road, #06-06, 11-Guang Factory Building, Singapore 409032			
Tel: 7465871		E-Mail: shiptech@mbox2.singnet.com.sg	
PROJECT		MV "SARWAGUNA DUABELAS" 36M CREW BOAT	
TITLE GENERAL ARRANGEMENT (AS FITTED)			
BUILDER PENGUIN BOAT INTERNATIONAL LIMITED			HULL NO. 112
DRAWN	MARG LM	6-5-97	SCALE
CHECKED			1:75
NOTED			
DWG. NO. ST1120-G1		REV F	
SHEET		OF	

APPROVED BY :
 ON :
 This drawing and the information contained herein is supplied on the understanding that they are the exclusive property of Shiptech Pte Ltd. They must not be used or reproduced in whole or in part, without permission in writing.

98024316FP